

**DRAWINGS AND PLANS OF VARIOUS FARM BUILDINGS ARE LISTED BELOW. YOU CAN USE THESE TO HELP YOU DECIDE ON THE MOST APPROPRIATE BUILDINGS FOR YOUR SITUATION.
PLANS, SECTIONS, END VIEWS AND ELEVATIONS OF THESE CAN BE OBTAINED FROM YOUR LOCAL TEAGASC ADVISER.
All designs must comply with Department of Agriculture and Food specifications and Health and Safety procedures and requirements.**

Dairy House Designs

File Name	Description
DH1	4 bay, 2 row, double sided shed with 60 cubicles, scrapers and slats
DH2	6 bay, 2 row, double sided shed with 84 cubicles, scrapers and slats
DH3	7 bay, 2 row, double sided shed with 104 cubicles, scrapers and slats
DH4	8 bay, 2 row, double sided shed with 120 cubicles, scrapers and slats
DH5	5 bay, 3 row, single sided shed with 51 cubicles and slats only
DH6	4 bay, 3 row, single sided shed with 40 cubicles, scrapers and slats
DH7	5 bay, 3 row, single sided shed with 54 cubicles, scrapers and slats
DH8	6 bay, 3 row, single sided shed with 63 cubicles, scrapers and slats
DH9	Rows of cubicles perpendicular to feeding passage with 60 cubicles, scrapers and slats
DH9A	Rows of cubicles perpendicular to feeding passage with 60 cubicles, and slats only
DH10	5 bay, 2 row, double sided shed with 76 cubicles, scrapers and slats
DH10A	5 bay, 2 row, double sided shed with 76 cubicles and slats only
DH11	5 bay, 3 row, single sided shed with 48 cubicles, scrapers and slats
DH12	Integrated dairy unit with 23 cubicles with room to expand to 42, calving boxes, an 8 unit milking parlour and handling facilities
DH13	9 bay, 2 row, double sided shed with 130 cubicles, scrapers and slats
DH14	5 bay, 3 row, double sided shed with 96 cubicles, scrapers and slats
DH15	6 bay, 3 row, double sided shed with 126 cubicles, scrapers and slats
DH16	7 bay, 4 row, single sided shed with 80 cubicles, scrapers and slats
DH17	8 bay, 3 row, double sided shed with 81 cubicles, scrapers and slats
DH18	9 bay, 3 row, single sided shed with 93 cubicles, scrapers and slat

Note: "2 row" refers to two rows of cubicles parallel to a feeding barrier

Milking Parlour Designs

File Name	Description
8U 762A	8 unit, 762mm centres, 1525mm wide pit
8U 762B	8 unit, 762mm centres, 1830mm wide pit
10U 762A	10 unit, 762mm centres, 1525mm wide pit
10U 762B	10 unit, 762mm centres, 1830mm wide pit
12U 762A	12 unit, 762mm centres, 1525mm wide pit
12U 762B	12 unit, 762mm centres, 1830mm wide pit
14U 762A	14 unit, 762mm centres, 1525mm wide pit
14U 762B	14 unit, 762mm centres, 1830mm wide pit
16U 762A	16 unit, 762mm centres, 1525mm wide pit
16U 762B	16 unit, 762mm centres, 1830mm wide pit
18U 762A	18 unit, 762mm centres, 1525mm wide pit
18U 762B	18 unit, 762mm centres, 1830mm wide pit
20U 762A	20 unit, 762mm centres, 1525mm wide pit
20U 762B	20 unit, 762mm centres, 1830mm wide pit
12U 710A	12 unit, 710mm centres, 1525mm wide pit
12U 710B	12 unit, 710mm centres, 1830mm wide pit
14U 710A	14 unit, 710mm centres, 1525mm wide pit
14U 710B	14 unit, 710mm centres, 1830mm wide pit
16U 710A	16 unit, 710mm centres, 1525mm wide pit
16U 710B	16 unit, 710mm centres, 1830mm wide pit
20U 710A	20 unit, 710mm centres, 1525mm wide pit
20U 710B	20 unit, 710mm centres, 1830mm wide pit

Cattle House Designs

File Name	Description
BH1	4 bay A roof, single 4.4m slat
BH2	3 bay A roof, single 4.4m slat
BH3	3 bay A roof, single 3.8m slat
BH4	4 bay A roof, single 3.8m slat
BH5	4 bay monopitch, single 3.8m slat
BH6	4 bay A roof, double 3.8m slat
BH7	5 bay A roof, double 3.8m slat
BH8	6 bay A roof, double 3.8m slat
BH9	3 bay monopitch, single 4.4m slat
BH10	4 bay monopitch, single 4.4m slat
BH11	2 bay monopitch, single 4.4m slat
BH12	5 bay A roof, single 4.4m slat
BH13	3 bay monopitch, single 3.8m slat
BH14	2 bay monopitch, single 3.8m slat
BH15	4 bay A roof, double 3.2m slat
BH16	5 bay A roof, double 3.2m slat
BH17	6 bay A roof, double 3.2m slat
BH18	4 bay monopitch, double 3.8m slat
BH19	5 bay monopitch, double 3.8m slat
BH20	4 bay monopitch, single 3.8m slat
BH21	3 bay A roof, double 3.8m slat
BH22	4 bay A roof, straw bedded unit with double 3.8m slat
BH23	6 bay A roof, feeding barrier at each side of 3.8m slat
BH24	6 bay A roof, single 5.0m slat
BH25	3 bay monopitch, double 3.5m slat

Suckler House Designs

File Name	Description
SU1	4 bay, double 3.2m slat with creep
SU2	3 bay, single 3.5m slat with creep
SU3	4 bay, single 3.5m slat with creep
SU3A	4 bay, single 4.4m slat with creep
SU4	3 bay, single 3.8m slat with creep
SU5	3 bay, single 3.2m slat-straw bed behind
SU5A	3 bay, single 3.2m slat-straw bed behind
SU6	3 bay, single 3.2m slat-straw bed behind
SU7	4 bay, single 3.2m slat-straw bed behind
SU7A	4 bay, single 3.8m slat-straw bed behind
SU8	4 bay, single 3.8m slat-straw bed behind
SU9	5 bay, single 3.8m slat-straw bed behind
SU10	6 bay, single 3.8m slat-straw bed behind
SU11	6 bay integrated suckler/cattle unit with slats and cubicles
SU12A	2 bay, single 3.8m slat with creep
SU12B	2 bay, single 3.8m slat with creep
SU13	3 bay, single 3.8m slat-straw bed behind
SU14	5 bay, single 5m slat with creep
SU15	6 bay, single 5.0m slat with creep
SU16	4 bay, single 3.8m slat with creep

Sheep House Designs

File Name	Description
SH1	Slatted shed – 132 ewes
SH2	Slatted shed – 252 ewes
SH3	Slatted shed – 264 ewes
SH4	Slatted shed – 504 ewes
SH5	Straw bedded shed – 132 ewes
SH6	Straw bedded shed – 252 ewes
SH7	Straw bedded shed – 264 ewes, two person feeding
SH8	Straw bedded shed – 264 ewes
SH9	Straw bedded shed – 504 ewes
SH10	Straw bedded shed – 396 ewes, two person feeding
SH11	Straw bedded shed – 432 ewes two person feeding
Athenry	Athenry College sheep house
Athenry1	Athenry sheep research unit
Kildalton	Kildalton sheep house
Knockbeg	Knockbeg sheep research unit
Kildalton1	Kildalton sheep handling unit
Knockbeg1	Knockbeg sheep handling unit
SHU1	Sheep handling unit 1
SHU2	Sheep handling unit 2

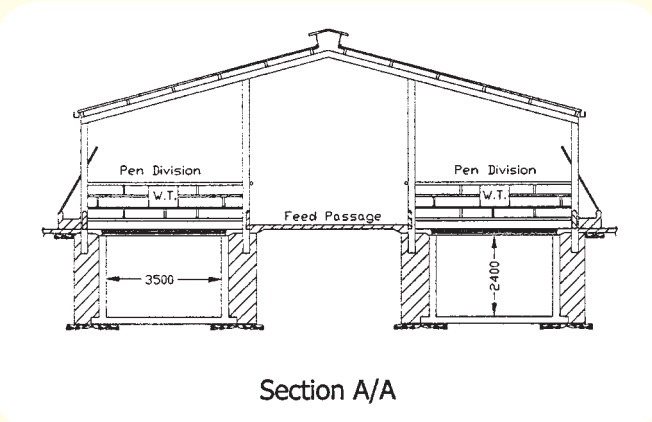
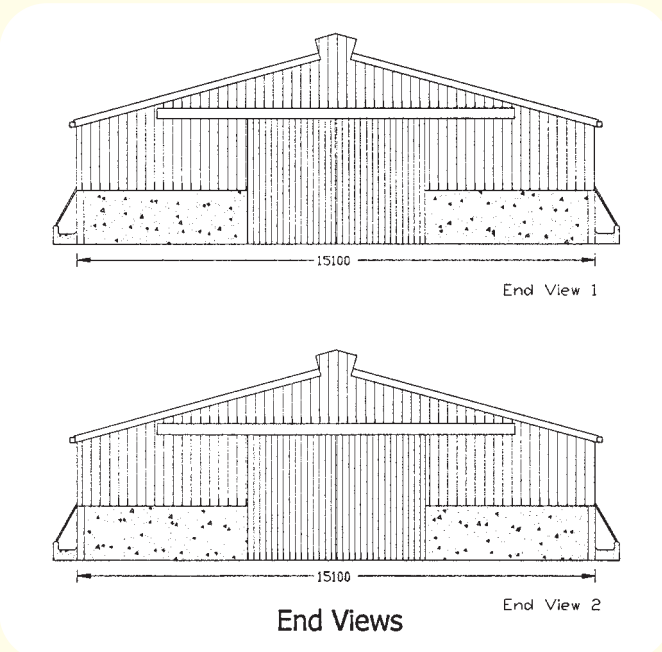
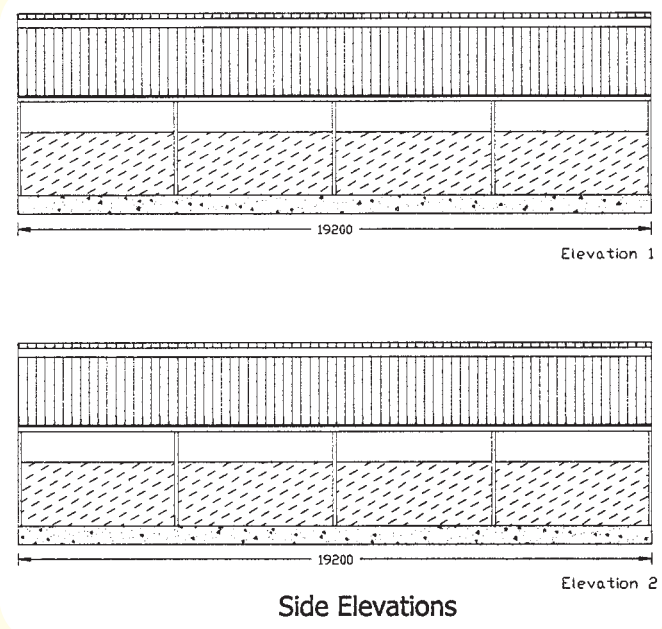
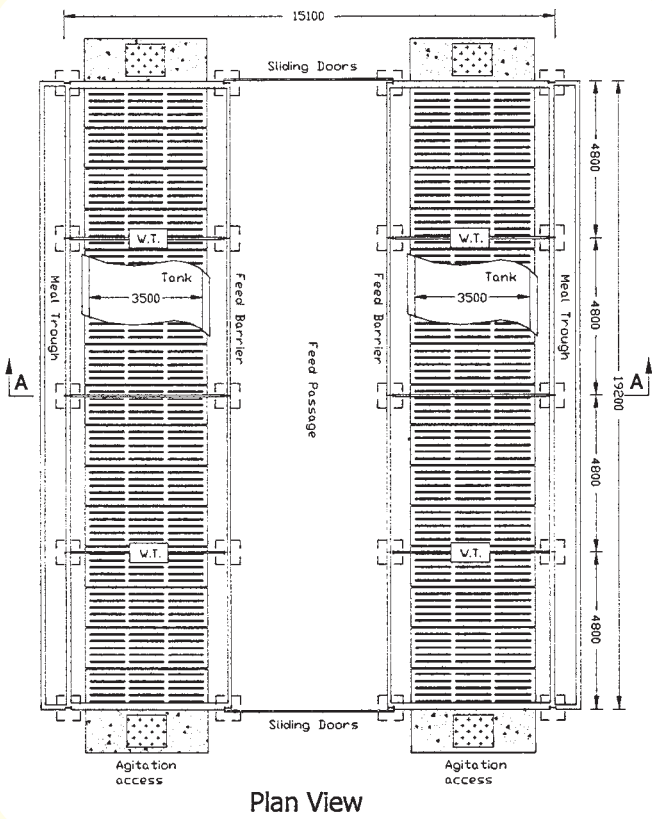
Grain Store Designs

File Name	Description
GS1	500 tonne store
GS2	800 tonne store
GS3	1000 tonne store
GS4	1000 tonne store
GS5	1200 tonne store
GS6	1200 tonne store
GS7	600 tonne store
GS8	800 tonne store
GS9	1400 tonne store
GS10	1000 tonne store

Building Design Details

File Name	Description
Vent 450	450mm ventilation outlet
Vent 600	600mm ventilation outlet
Vent 750	750mm ventilation outlet
S.Boarding	Space Boarding
Agitslab	Agitation access point
Eave	Eave detail
Spine-w	Tank spine wall detail
Stubb-w	Straight feeding barrier
Purlin	Purlin detail

Sample Drawing BH4



Standard Drawings and Plans of Farm Buildings

