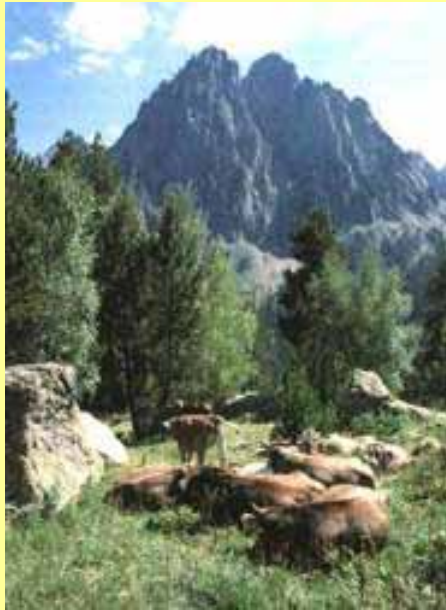
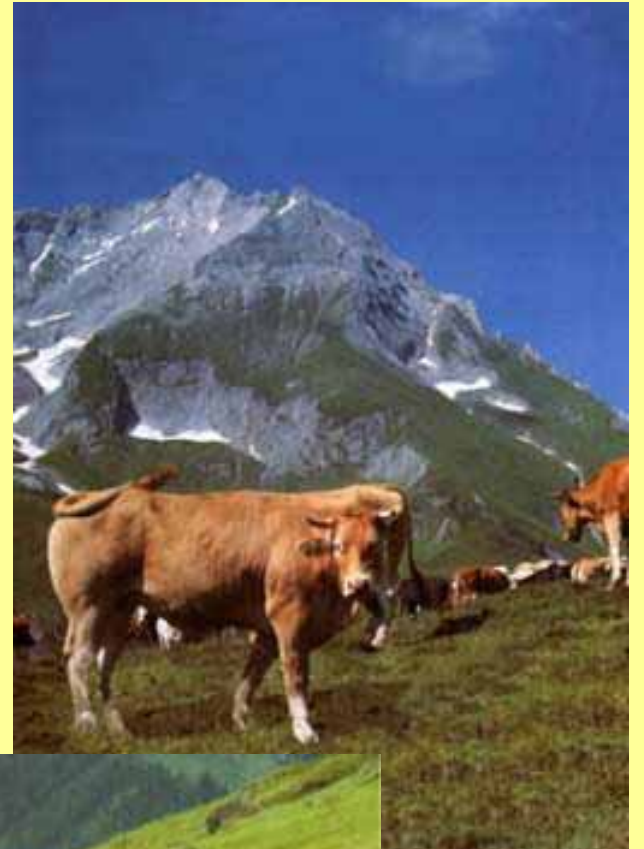
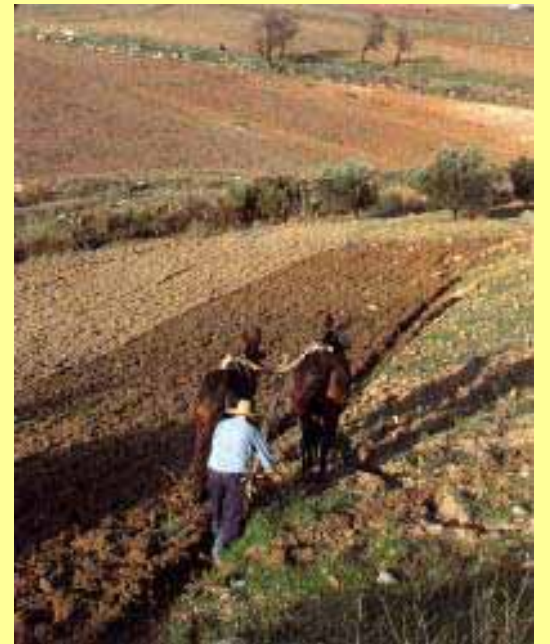
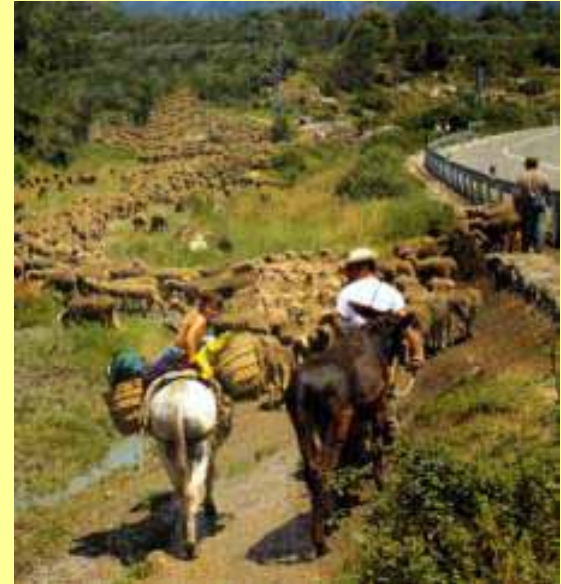


High Nature Value Farmland

An emerging policy area



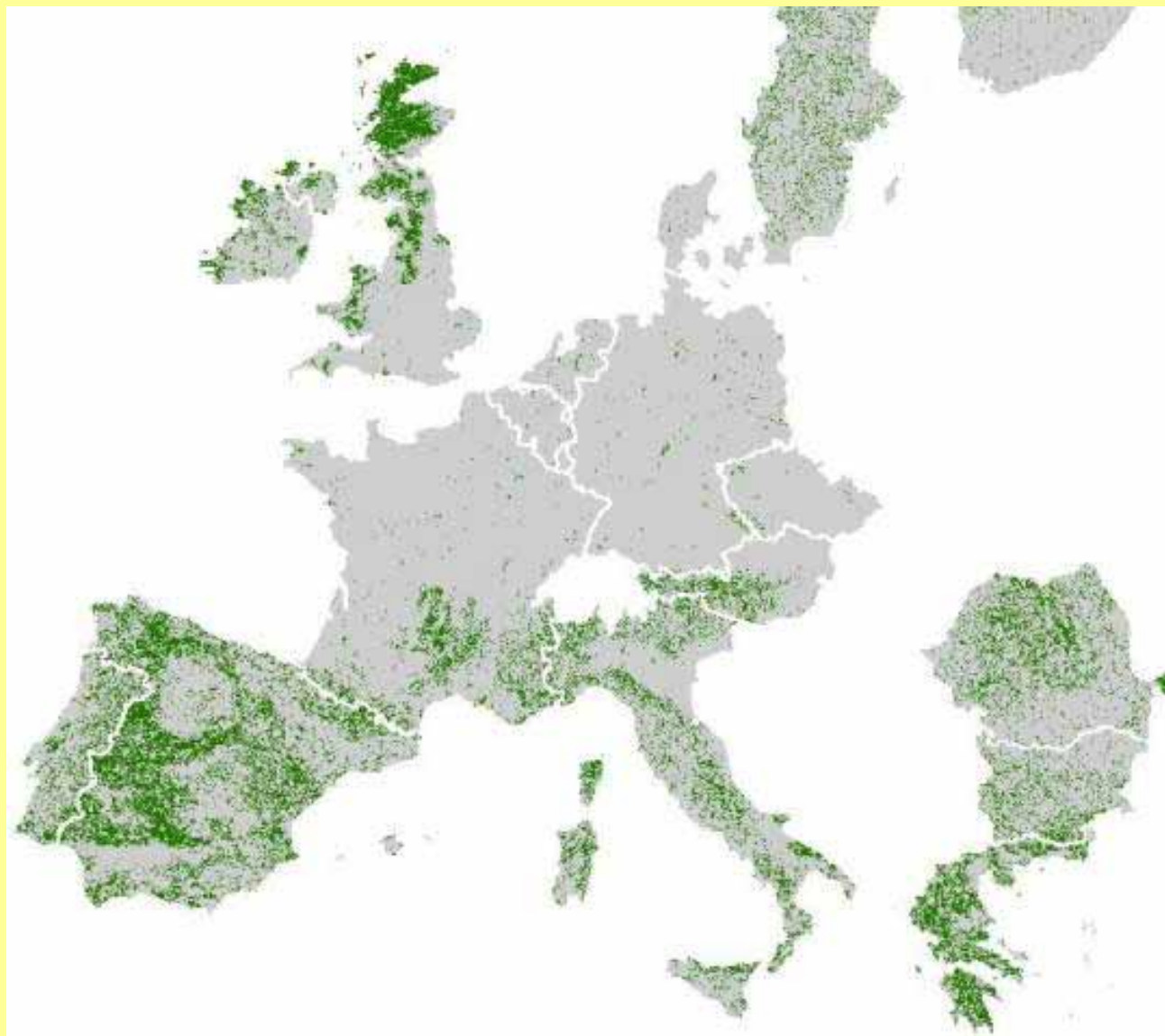








Indicative areas of High Nature Conservation



Features common to High Nature Value farmland in Europe

- The farm operations have their roots in management systems that used regional breeds of livestock;
- Draw upon local skills that complement the climate and geography of the locality;
- Use little artificial fertiliser or chemicals;
- Often have small scale cultivation as part of the livestock production system, and
- Often labour-intensive management practices, such as sheparding, are employed to make the most of natural pastures and meadows.
- Largely uneconomic and in decline

Types of High Nature Value farmland

- **Type 1** – farmland dominated by semi-natural vegetation
- **Type 2** – mosaics of small scale features of heritage value
- **Type 3** – farmland supporting rare or threatened species

Type 1 - Uplands



Type 1 - Limestone grassland



Type 1 - Marsh Fritillary



Type 1 - Wet grassland



Type 1 - Coastal sites



Type 3 – Threatened or rare species



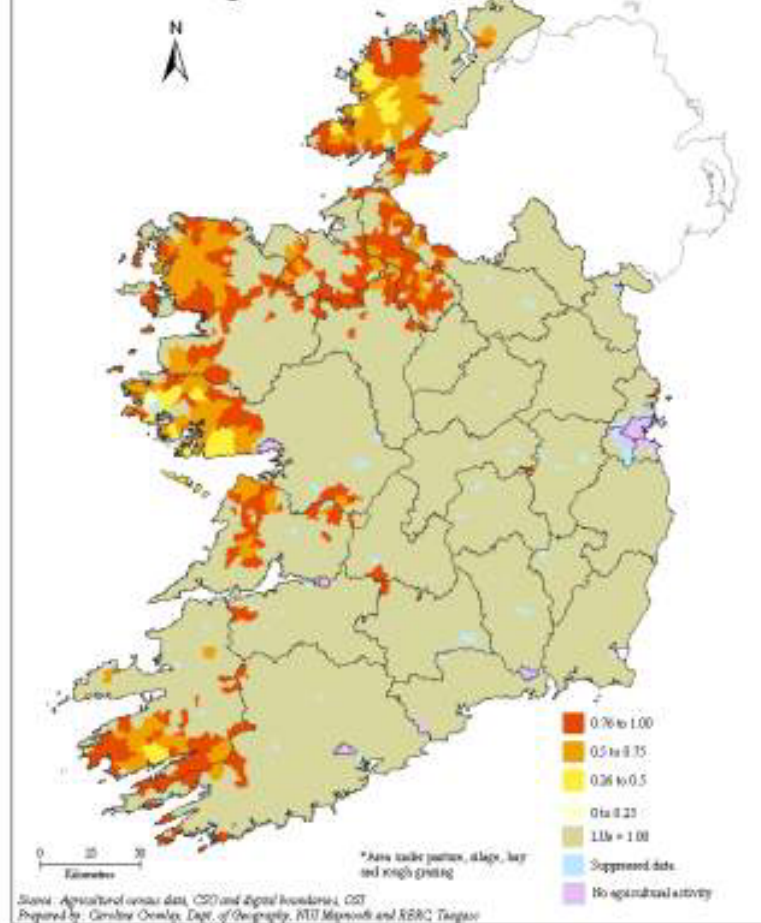
Type 2 – characterised by a mosaic of small-scale features of heritage value





Mapping High Nature Value farmland

Map 1: Stocking density of up to 1 Livestock Unit per hectare grassland* 2000



Map 4: Commonage as percentage of total area farmed* 2000

