

REPS 4 – Biodiversity, A Measure of Success?



Donal Coleman, Senior Inspector, AES Division
DAFF



RDP 2007 – 2013 - Contribution to Malahide?

- Axis 2 – Agri environment REPS/LFAs

Stated objectives include enhancing:-

- Biodiversity
- HNV farming
- Traditional landscape
- Water quality and
- Climate change



HOW?

By making a declaration of intent.....

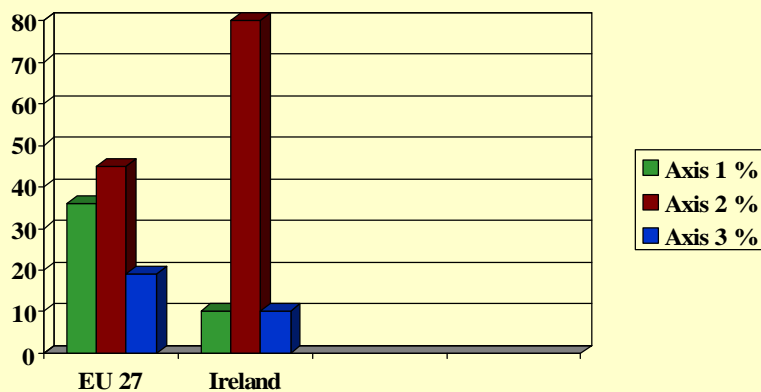
In the clearest possible fashion.....



3



By allocating more resources to Axis 2 – REPS and LFAs



4



Financing REPS 2007 - 2013

- Total Co-funded RDP €4.3 billion
- Total REPS Funding €2.50 billion
- EU contribution to REPS €1.37 Billion
- Average co-funded rate of 50% but REPS attracts higher EU rate of 55% co-funding
- Reflects degree of importance and 'ownership' Commission attaches to Agri-environment



5



Also Major Exchequer Concern via....



6



NDP 2007 - 2013

- €2.0 billion contribution to RDP – all exchequer
- Environmental sustainability
- ‘Value for Money’ Audit
- ‘Robust monitoring including Output and Impact Indicators’
- D/Finance will assess at programme level



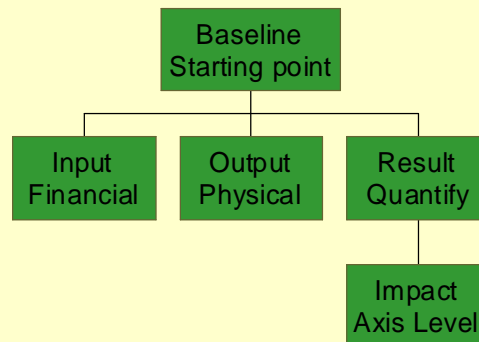
How Will Commission Assess ‘value for money’?

- Common Monitoring and Evaluation Framework or **CMEF**
- This is a system to literally measure the success of the programme especially in the realm of biodiversity
- Will work its way back to the individual farm plan



Structure of the CMEF

CMEF Cascade



9



Hierarchy of Indicators

- **Baseline** – At programme and axis level (start of programme)
- **Input/Output and Result** – at measure level (annual collection and report)
- **Impact** – at measure/axis and programme level (at mid-term and ex-post)



10



Sample of Baseline Indicators REPS 4

Indicator	Measure Unit	Baseline	Target
Biodiversity: Popn farm birds	Trend of index	95.9	100 (yr 2000)
Biodiversity: HNV farmland	UAA	1.1 m ha.	1.1 m ha.
Water quality: GN Balance	Surplus N in kg/ha	83 kg/ha	75 kg/ha
Clim change: GHG emissions	As 1000t of Co2 equivalent	CH4 11,398 N ₂ O 7,584	9,791 6,625



Actions to Achieve Baseline Targets

- **11 Core Measures**
- **25 Biodiversity Options split between categories**
- **12 Supplementary Measures**
- **Stand alone Organics Scheme**
- **Good Agric Environ Conditions (GAEC)**



CMEF to Quantify Achievement

- **Will measure at Action level using a matrix of**
- ***Output Indicators***
- ***Result Indicators***
- ***Impact Indicators***



Sample of Output Indicators

- **These are generally simple quantitative yardsticks e.g.**
- ***Number of holdings supported = 64,000***
- ***Area under Agri-Environ = 2.25 m ha.***
- ***Number of Organic participants = 4,000***



Sample of Results Indicators

- **These are generally expressed in the form of targets and are qualitative in nature e.g.**



Indicator	Baseline	Target
Conservation of wild birds	<50 farmers	1,000 farmers
Land Area under Linnet	2,112 ha.	5,000 ha.
No. Farmers taking up AnGr	560	650
<i>Av. REPS Soil P (mg/l)</i>	<i>7.67</i>	<i>6.5</i>



Impact Indicators

- **These are the most critical**
- *They represent the success of the programme*
- *Are also measurable*
- *But do they fit with the Input/Output etc indicators?*



Indicator	Target
Reversal in biodiversity decline	Decline halted
Increase in unpolluted length in rivers	72% of length
Likert Landscape assessment	0.75 or higher
<i>Maintenance of HNV farmland and forestry</i>	<i>750,000 ha</i>



High Nature Value Farming

Low input, low density farming systems with a high degree of biodiversity and also the 'mosaic' pattern of farming is highly developed in such areas.



A New Approach

- **HNV reflects the EU attitude towards Agri-environment: -**
- *Existing programmes largely predicated on payment for abstention*
- *HNV represents incentives for positive actions*



Already Happening!

- **Institute for European Environmental Policy**
- ***Report to the EU Commission on the Application of the HNV Impact Indicator***
October 2007
- ***First discussion at Commission level - today***



So What?

- **Why am I telling you all this ?**



Rural Development 2013?

