

Agrienvironmental measures in the swedish RDP 2007-2013

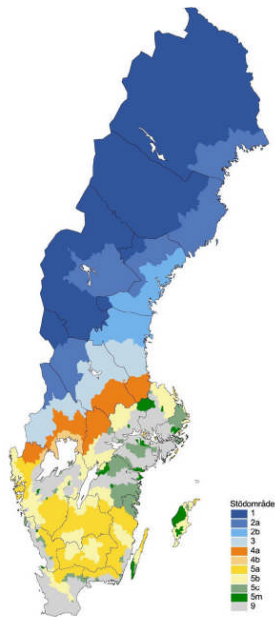
Niclas Purfürst
Swedish board of agriculture



2007-11-11

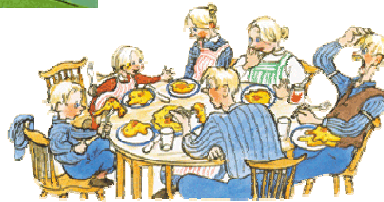
1

Karta med stödområden för miljöersättningarna



2007-11-11

2



Country and rural profile

Length 1.574 km

Population 9 million – average 22 persons/km²

- About 80 000 applications for single farm payment

Country size: 41 million ha of wich

- Forest 57 %
- Mountains and wetlands 31 %
- 100.000 lakes and 222,000 islands
- Agricultural land only 8 %**

Country and rural profile

- Difficult climatic conditions, long distances, low population density**
- Small proportion of agricultural land (50 % LFA)**
- High natural and cultural values in the landscape**

RDP 2007 - 2013

- Emphasis on axis 2 (70 % of the budget)**
- Objective: to preserve and improve an attractive landscape and living countryside, stimulate a sustainable production**

biological values...preserve

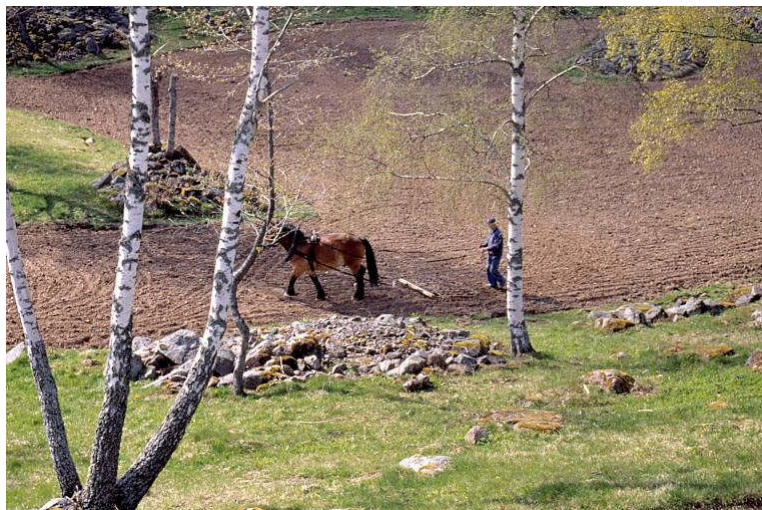


JORDBRUKS
VERKET

2007-11-11

7

...improve or create



JORDBRUKS
VERKET

2007-11-11

8

...maintain



JORDBRUKS
VERKET

2007-11-11

9

Threats!



JORDBRUKS
VERKET

2007-11-11

10

The 16 environmental quality objectives

For instance:

- No 13, “A Varied Agricultural Landscape”
“The value of agricultural landscape and arable land must be protected for biological and food production at the same time as biological diversity and cultural heritage assets are preserved and strengthened.”

What is an agri-environmental measure?

- ✓5 year commitment (wetlands 5 x 4)
- ✓To cultivate according to the rules of the measure, GAEC and CC
- ✓< 5 % field controls every year
- ✓Failure to comply with rules reduction of payment or repayment of earlier payments
- ✓No selection is made – everybody can get a commitment

The AEMs

- LFA-payments 80-280 Euros per hectare
- Extensively ley management (for a better environment and an open landscape)
- Organic forms of production
- Environment protection measures
- Reduced nutrient leaching from arable land
 - Catch crops and spring cultivation
 - Riparian strips alongside waterways
- Traditional cultivated plants and livestock breeds

The AEMs

- Valuable natural and cultural environments in the
 - Agricultural landscape
 - Reindeer herding areas
- Biodiversity and cultural heritage in seminatural grazing lands, mown meadowland and wetlands
- Payment for regional priorities
 - Non-productive investments
 - Regional management initiatives 5 year commitments

The management

- The Swedish board is the managing and the paying authority
- The county administrative boards and the Sami parliament are responsible to
 - Selection
 - Decisions
 - Approval and validation of payments
 - Control tasks

Application

Special application form for the commitments

SAM = integrated application for payment of AEM and single farm payment including maps and crop

Special application forms for non-productive investments and other regional priority payments

Application

- Information to all farmers in februari**
- Apply for payment yearly before a date in march**
- Commitments must be fulfilled the whole year**

Semi-natural grazing lands, mown meadowland

- General value
- Particular value
- Woodland pasture
- Limestone pasture
- Mountain pasture
- Supplementary payment for
 - Pollarding
 - Post-mowing grazing
 - scything

Commitment plan

- Semi-natural grazing lands, mown meadowland of particular value
- County board determines the area eligible for higher payment
- Sets special management requirements

"If someone asks me what I remember from my childhood, then my first thought isn't of the people. It is nature, that enclosed my days then and filled them so intensely that as a grown up I can hardly grasp it. The wild strawberry mounds, the slopes blue with anemone, the meadows with cowslip, ...the pastures around Näs where we knew every path and stone, ... the ditches, the brooks and the trees, all this I remember more than the people. Stones and trees, they were close to us, almost like living creatures, and nature was what protected and nourished our childhood games and dreams."

Astrid Lindgren