

# Occupational Health issues in Farming

A GP Viewpoint

Michael Kennedy





# Statistics

- “Agriculture is the worst fatal accident and occupational health record of any major employment sector”
- 1.7% of workforce of GB
- 16% of fatal accidents (05/06 stats)
- 8.3 fatalities per 100,000 workers
- 49 killed per year

# Causes

- transport (being run over or vehicle overturns) - accounting for 24% of fatalities.
- falling from a height (through fragile roofs, trees etc) - 17%.
- struck by moving or falling objects (bales, trees etc) - 16%.
- asphyxiation / drowning - 9%
- trapped by something collapsing or overturning - 8%
- contact with machinery - 8%
- livestock related fatalities - 8%
- contact with electricity - 6%

# illness

- 80% of those working in the industry suffer some form of musculoskeletal injury;
- the incidence of asthma is twice the national average, and 40% of those working in the industry suffer respiratory disorders;
- 20,000 people suffer some form of zoonotic infection each year; and
- 25% of those working in the industry suffer some form of noise-induced hearing loss.

# Zoonoses

- Ringworm
- Salmonella
- E Coli 0157
- Orf (sheep goats )
- Leptospirosis
- Bovine TB
- Psittacosis
- Q Fever (Coxella Burnetii, fever headache lungs heart, milk, inhaled)
- Brucellosis
- Cryptosporidiosis (C pavum, calves,lambs,goats,deer dung)
- Streptococcus Suis
- Ovine Chlamydiosis
- BSE Scrapie

# SUN DAMAGE



LuckyOliver  
ANNOYING  
WATERMARK





# SOLAR KERATOSES



# BCC EAR



# BASAL CELL EPITHELIOMA



# SQUAMOUS CELL CARCINOMA



# MELANOMA



# SLIP SLAP SLOP



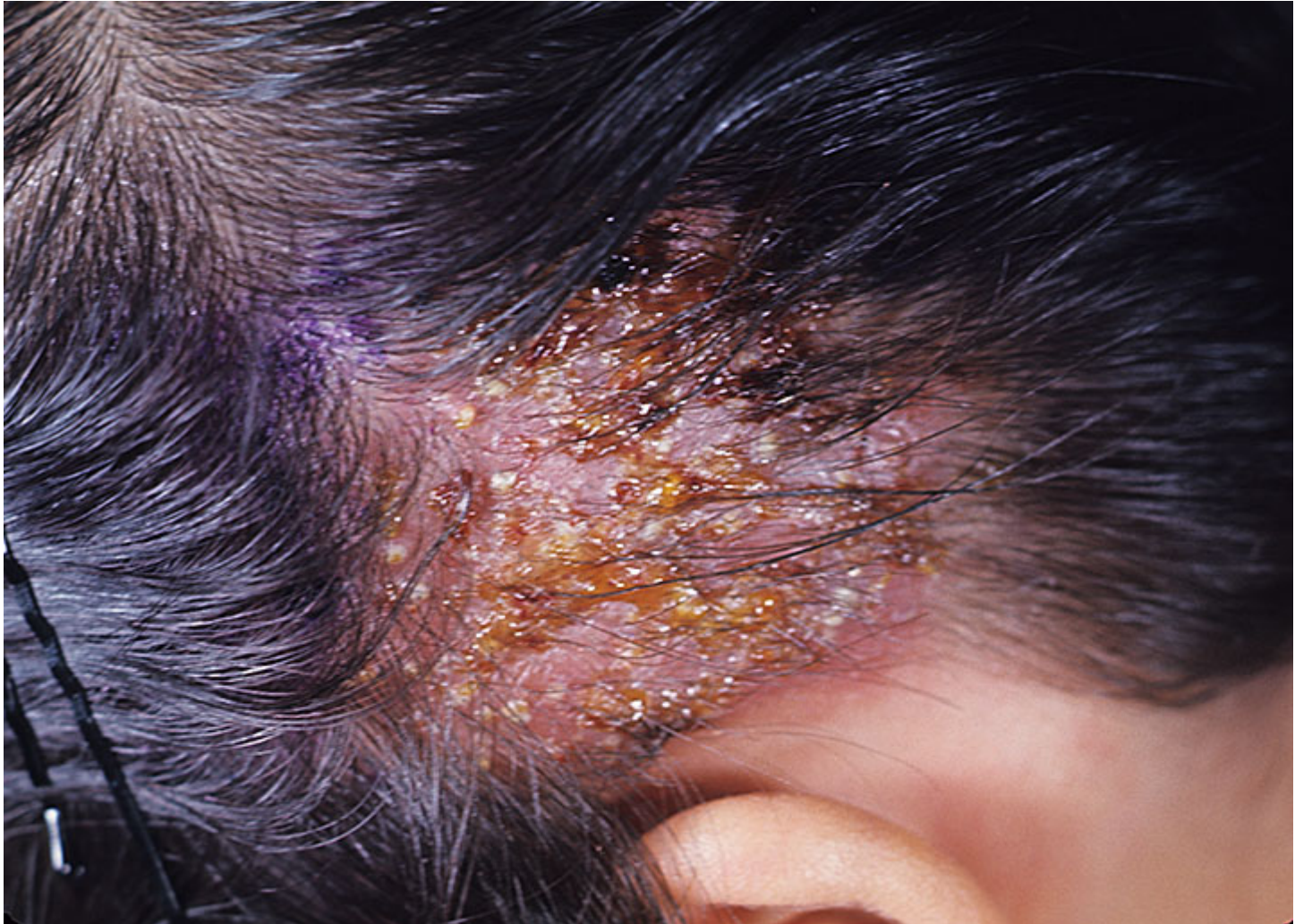
# CONTACT ECZEMA



# CEMENT DERMATITIS



# CATTLE RINGWORM



# URTICARIA



# ORF



# Leptospirosis

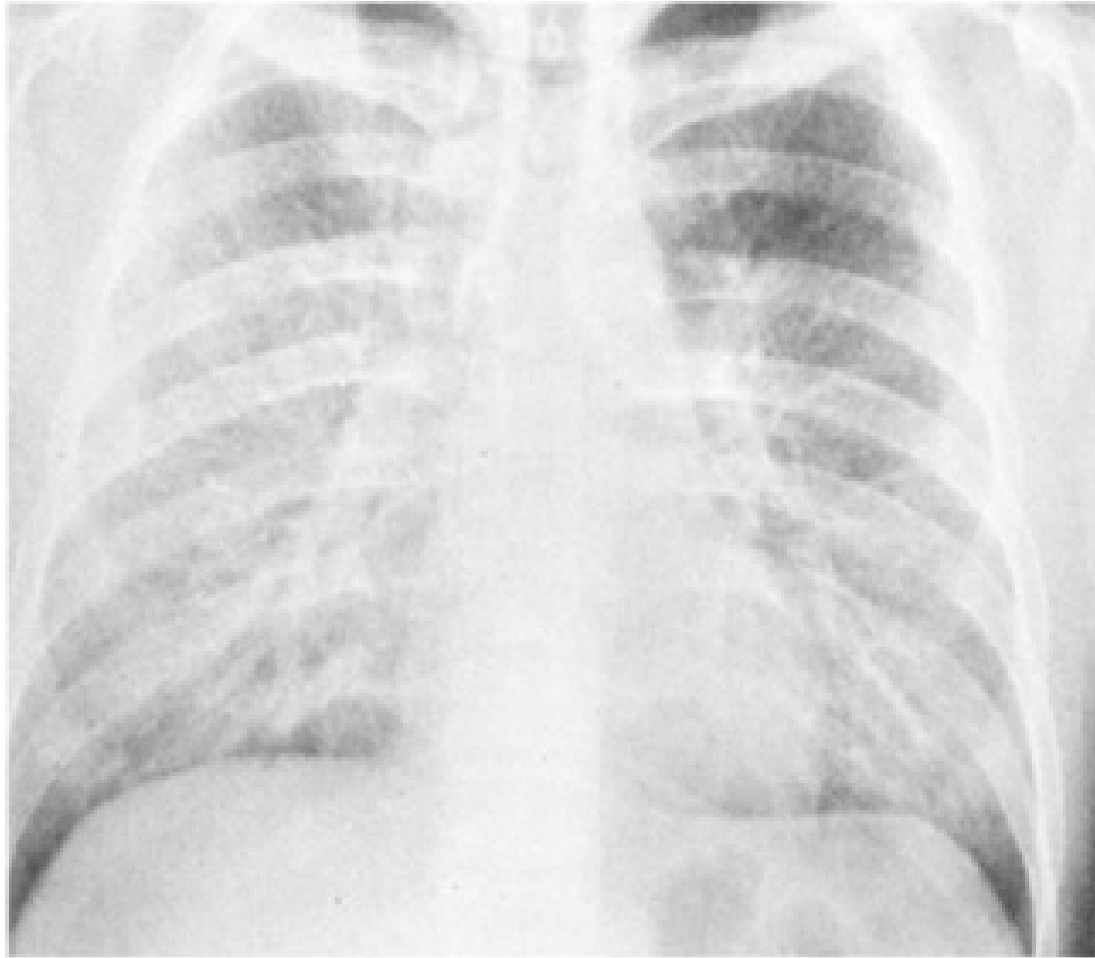




# TETANUS



# Farmer's Lung



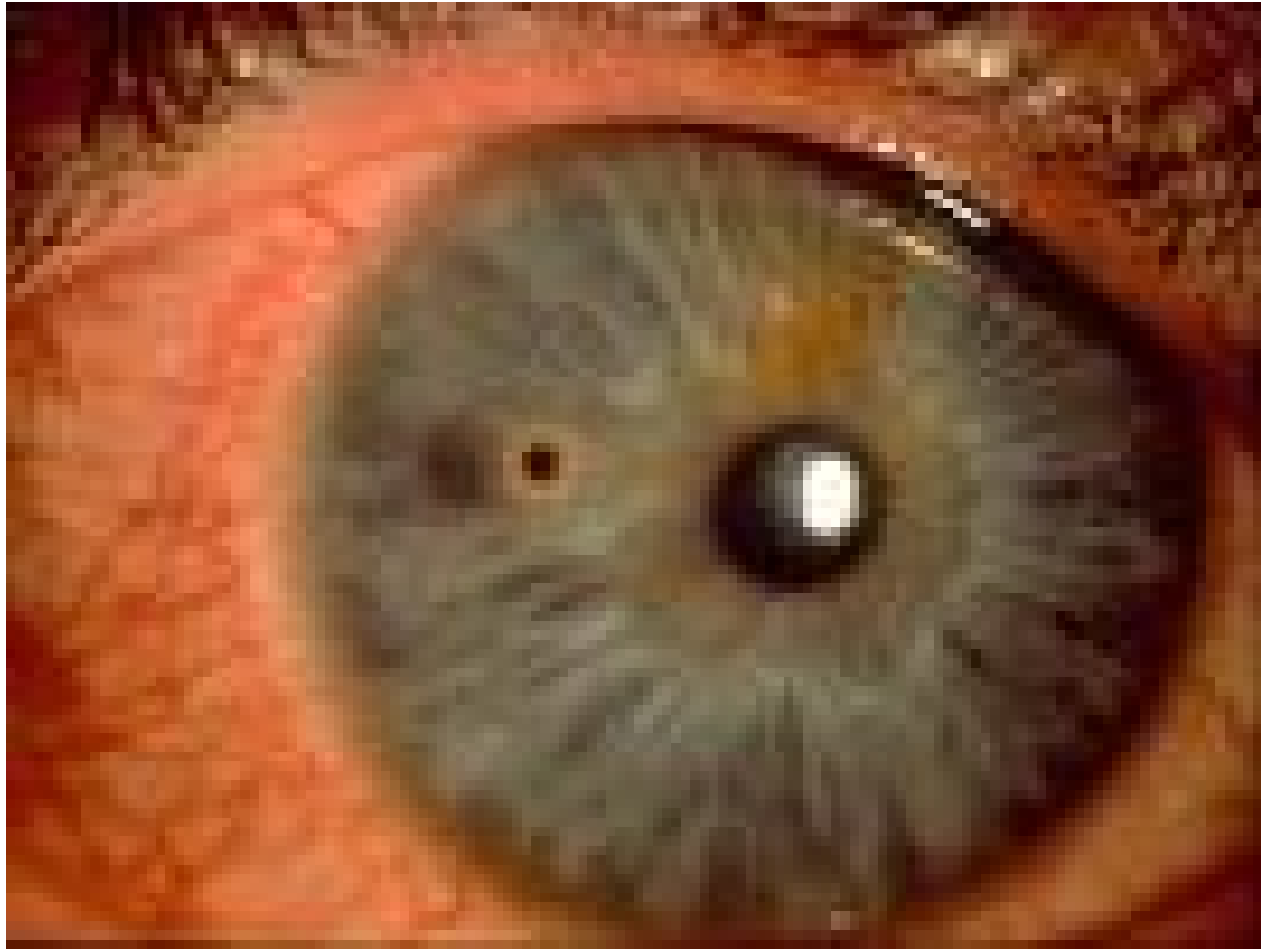


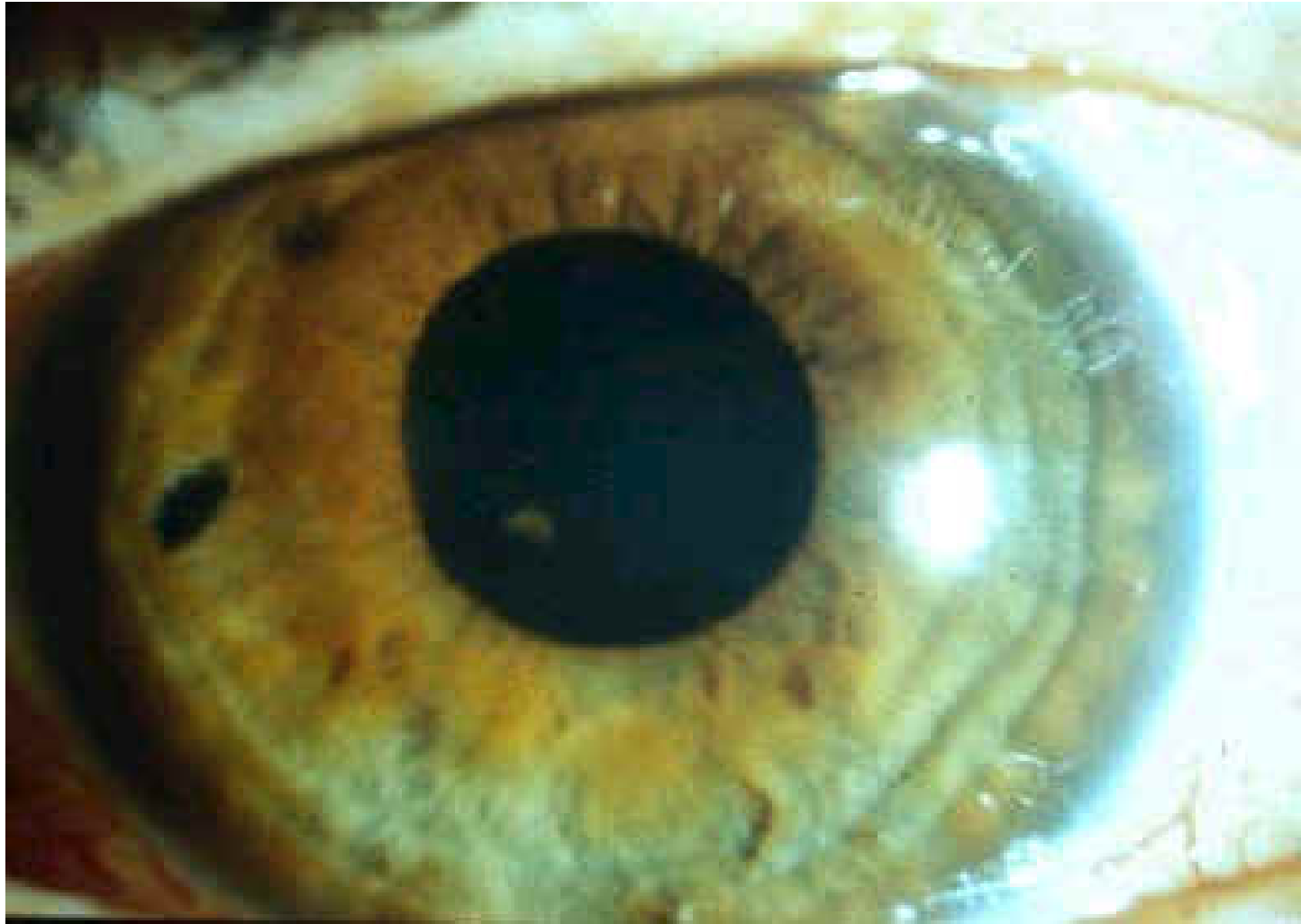


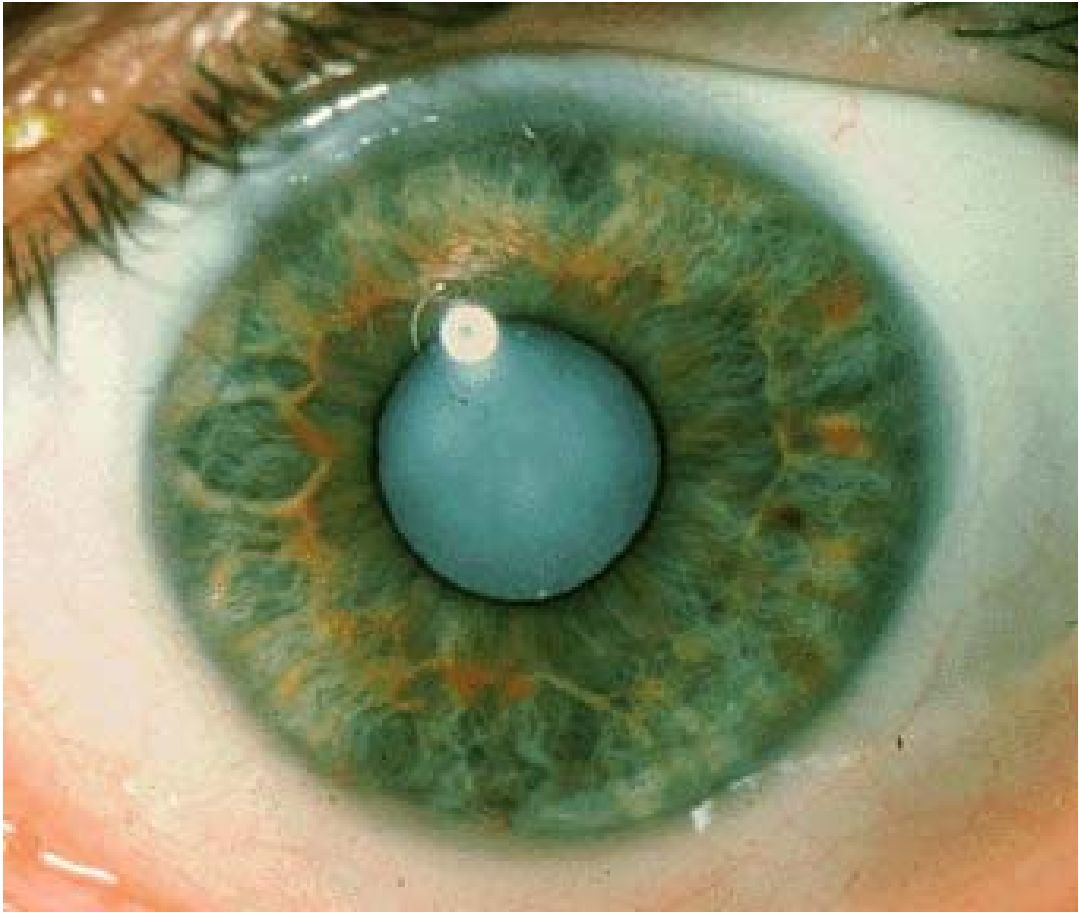
# INFLUENZA

Your Shot









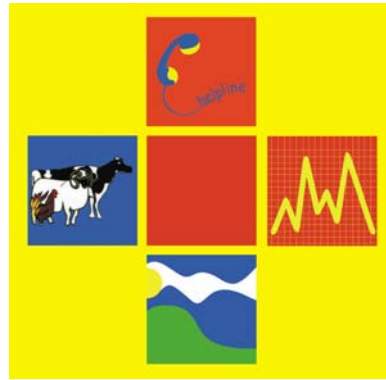




**Deafness/Disease**







# **RURAL SUPPORT**

**0845 606 7 607**



**0845 606 7 607**

# History

- Began life in the spring of 2001 when the helpline was launched.(FMD)
- Core funded by DARD and the DHSS&PS
- Originally funded via our local Assembly.
- Initial concentration was on health checks.  
The focus is now on the helpline.



# What is Rural Support?

- Rural Support is a listening ear, mediation and signposting service for farm families and people living in rural areas.
- Rural Support acts as a safety net for those people who may fall out of the system.



# How Do We Work?

- Helpline 0845 606 7 607 - can be contacted 24 / 7
- We have a team of 20 volunteers.
- Our volunteers work from home.
- We do outreach work in markets, farmer meetings, shows , WI meetings and so on.
- We catch callers.
- We stabilise callers.



# Current Issues

- Animal health legislation and disease
- Bureaucracy
- Rural Development / Planning
- Single Farm Payment
- Nitrates Directive
- Fear of the future
- Family/succession issues
- Finance



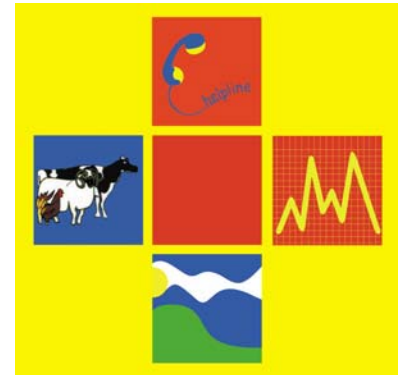
# How Can We Help?

- Make contact with farmers you are concerned about through a referral system
- Provide emotional support to farm families
- Get financial help via NICAB
- Help the farm family see things more clearly
- Take the heat out of situations



# How Can We Help?

- Act as a go between for the farmer and DARD and other stakeholders’.
- Provide people based support services in the event of major disease outbreaks
- Provide training opportunities for stakeholders in relation to people issues
- Help keep a sense of perspective.



# Progress To Date

- In 2002 call numbers were 2/week. There are now 2 calls/day.
- Call duration average 6 minutes
- We have health checked over 3000 farmers
- We handle/manage up to 20 referrals per month.



# Progress To Date

- Increase in 1 to 1 services
- Development of web site with interactive and alert system
- Development of agreements with DARD to co-operate in major animal disease outbreaks

