



Teagasc resources committed to supporting the beef sector

Professor Gerry Boyle, Director Teagasc

Presentation to Teagasc Annual Beef Conference, McWilliam Park Hotel, Claremorris, December 10th 2019

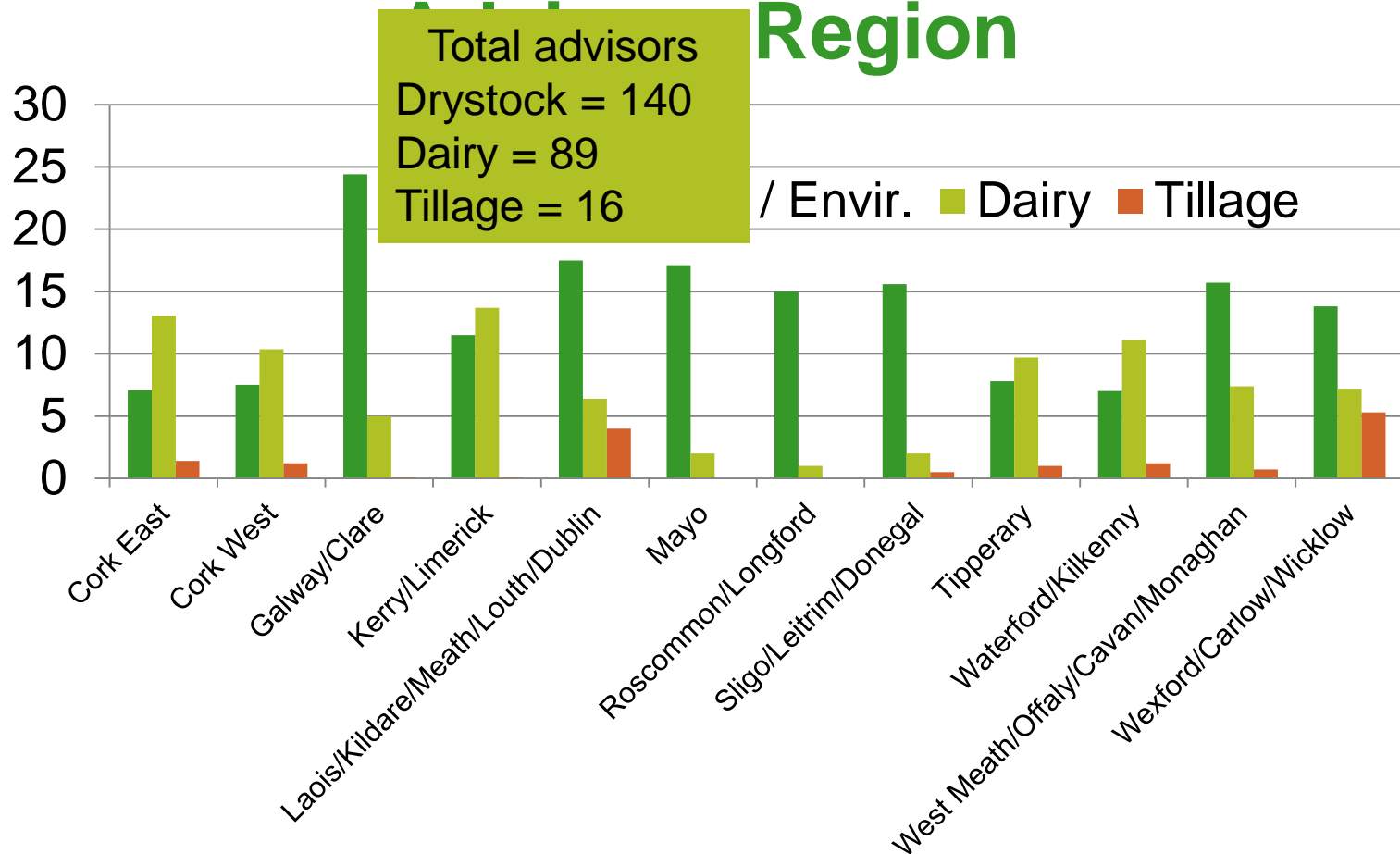
Key message

- This has been an exceptionally difficult year but there is a danger that we could collapse with negativity ... note
- Taking one year with another there is profit in beef production if farmed to a high level of performance

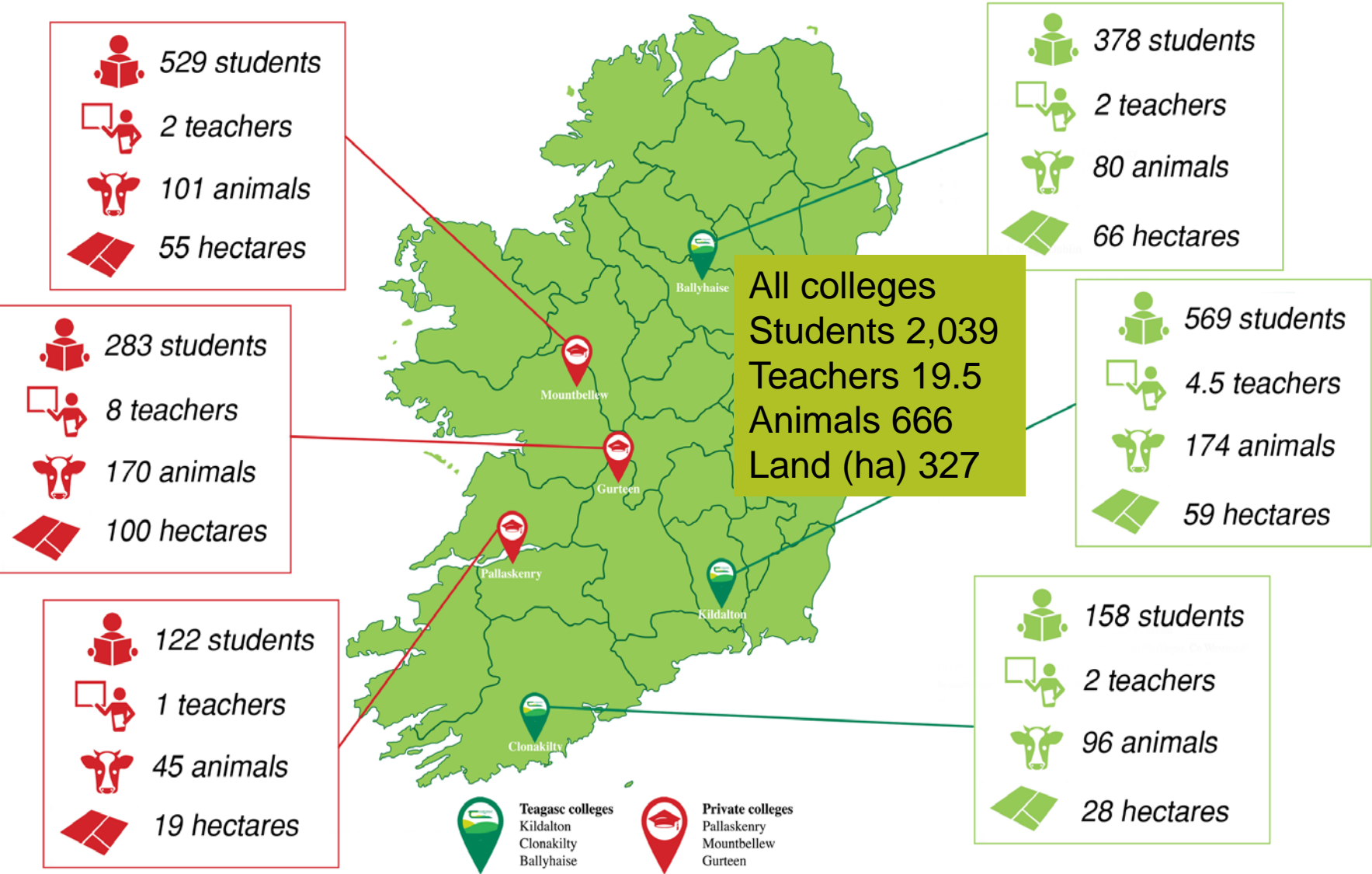
Teagasc commits significant resources to beef

- Teagasc provides an integrated set of services to Irish agriculture embracing advisory, education and research
- The Authority endeavours to support sectors in proportion to their importance to the rural economy and their prevalence throughout Ireland
- The following slides document a variety of indicators that demonstrate its profound commitment to Ireland's beef industry

Drystock advisors by Teagasc Region



Beef Education in Numbers



On-farm demonstration initiatives

1. Teagasc Derrypatrick Herd (Suckler Beef: Grange)
2. Teagasc and Dawn Meats Newford Herd (Suckler Beef: Athenry)
3. IFJ-Teagasc BETTER Beef Programme (Suckler and Other Systems (25 commercial farms))
4. Teagasc Maternal Index Herd (Suckler Beef: Grange)
5. Teagasc Dairy Calf to Beef Programme (Johnstown Castle)
6. Teagasc Dairy Calf to Beef Programme (Grange)
7. Teagasc 'Green Acres' Dairy Calf to Beef Programme (14 commercial farms)
8. Teagasc-Dawn Meats Integrated Dairy Calf to Beef Programme (4 commercial farms)

Summary of Teagasc beef research

1. Teagasc now implements a common genetics and grassland platform for all ruminant livestock
2. Evidence from all types of demo farms indicate a GM/ha of €1,000+ taking one year with another is feasible
3. Maternal Herd Replacement Index Grange: €110 extra per suckler cow
4. Dairy Calf to Beef Johnstown Castle: large differences within sire breed (e.g. worth €210 GM per calf for HE)
5. Recent initiatives: anthelmintic resistance, floor type and space, disbudding and castration procedures, arresting the decline in reproductive efficiency, molecular understanding of Feed Efficiency, grass-based beef and human health and nutrition
6. Meat Technology Ireland ... over €8 mill investment over 5 years

Thank you