

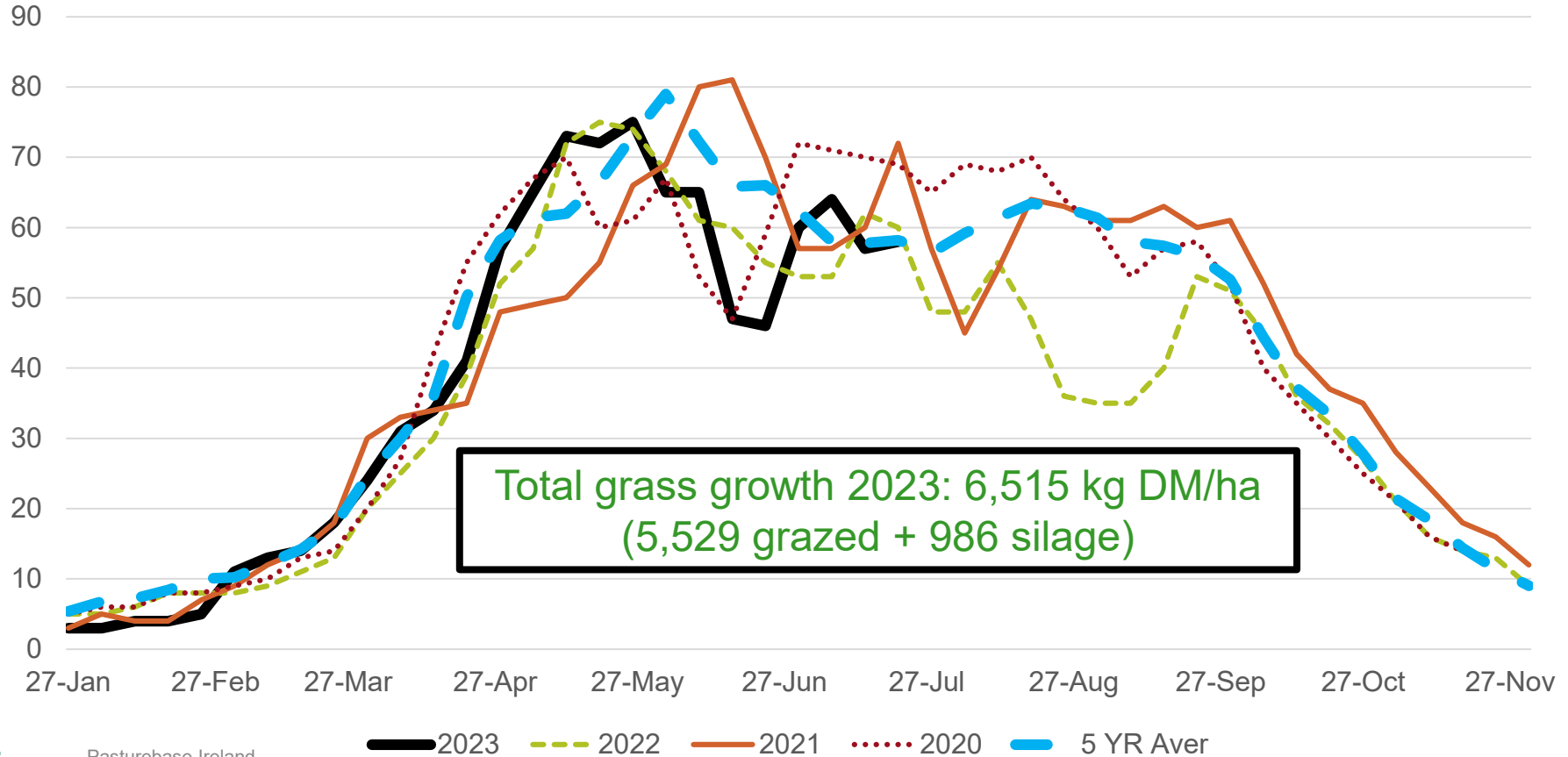


Teagasc Fodder Survey – June 2023

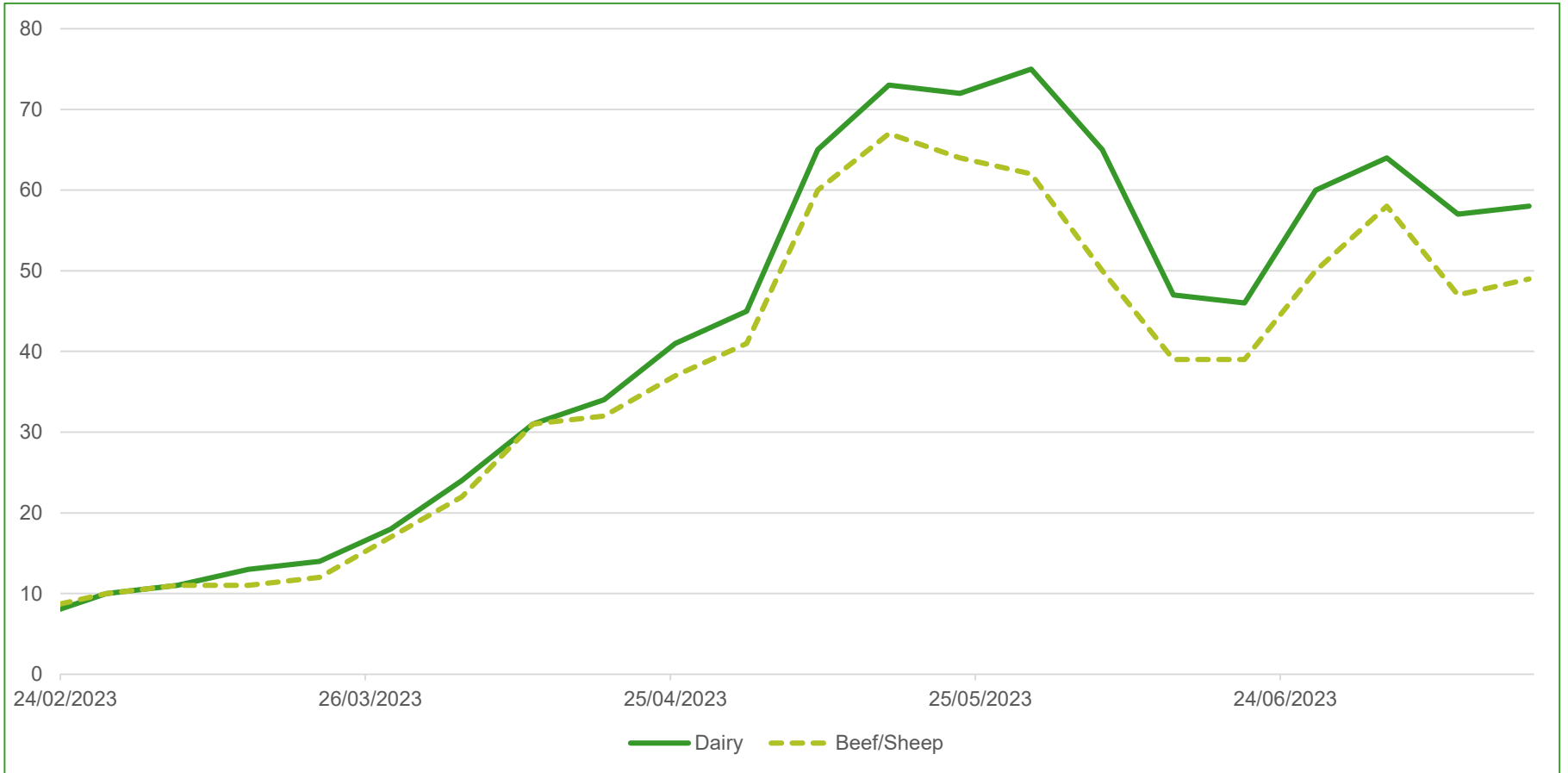
National Fodder and Food Security Committee – 19 July 2023

Michael O'Donovan, Ciarán Hearn & Joe Patton

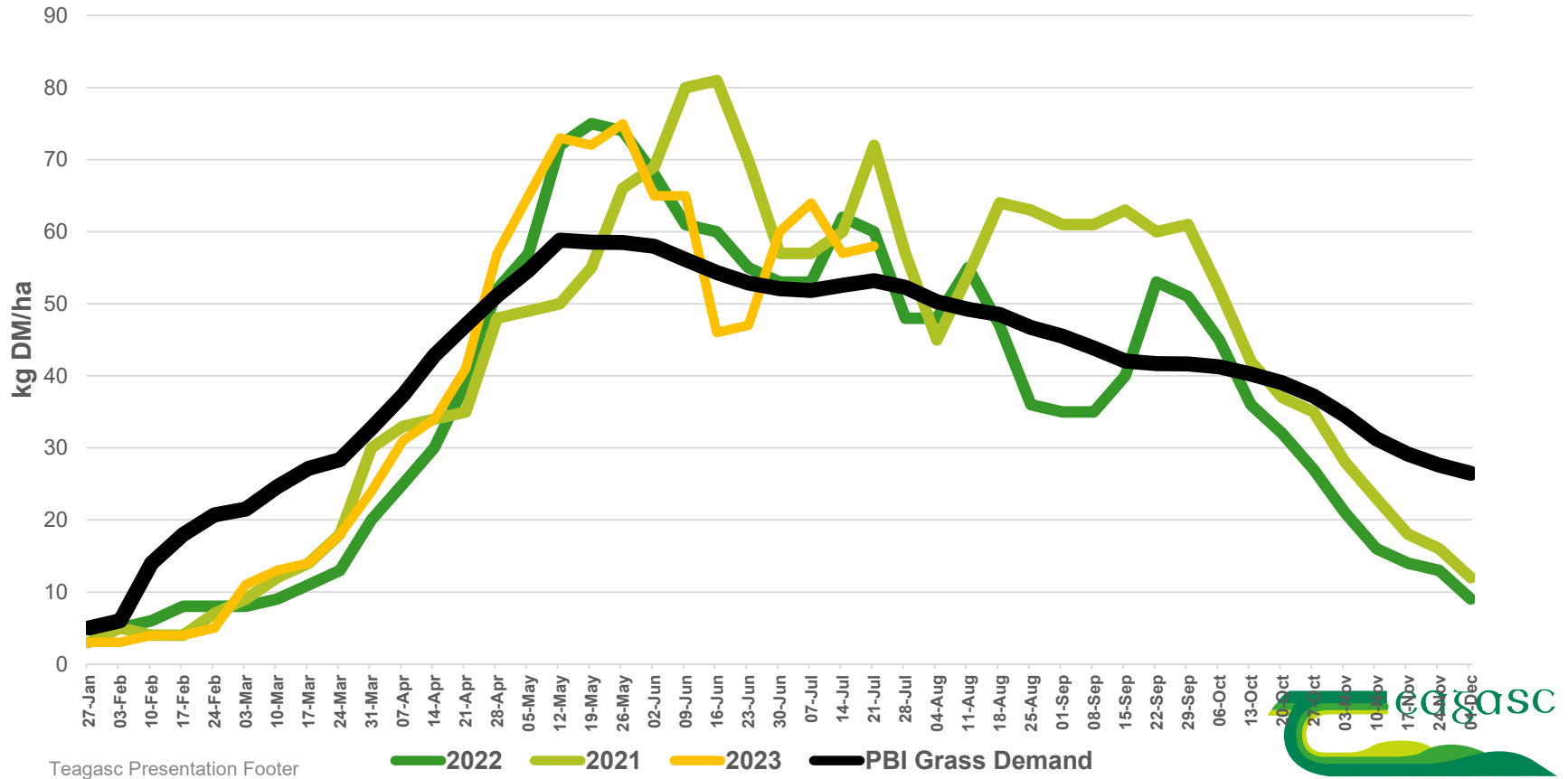
Pasturebase Ireland Grass Growth 2023 - 2020



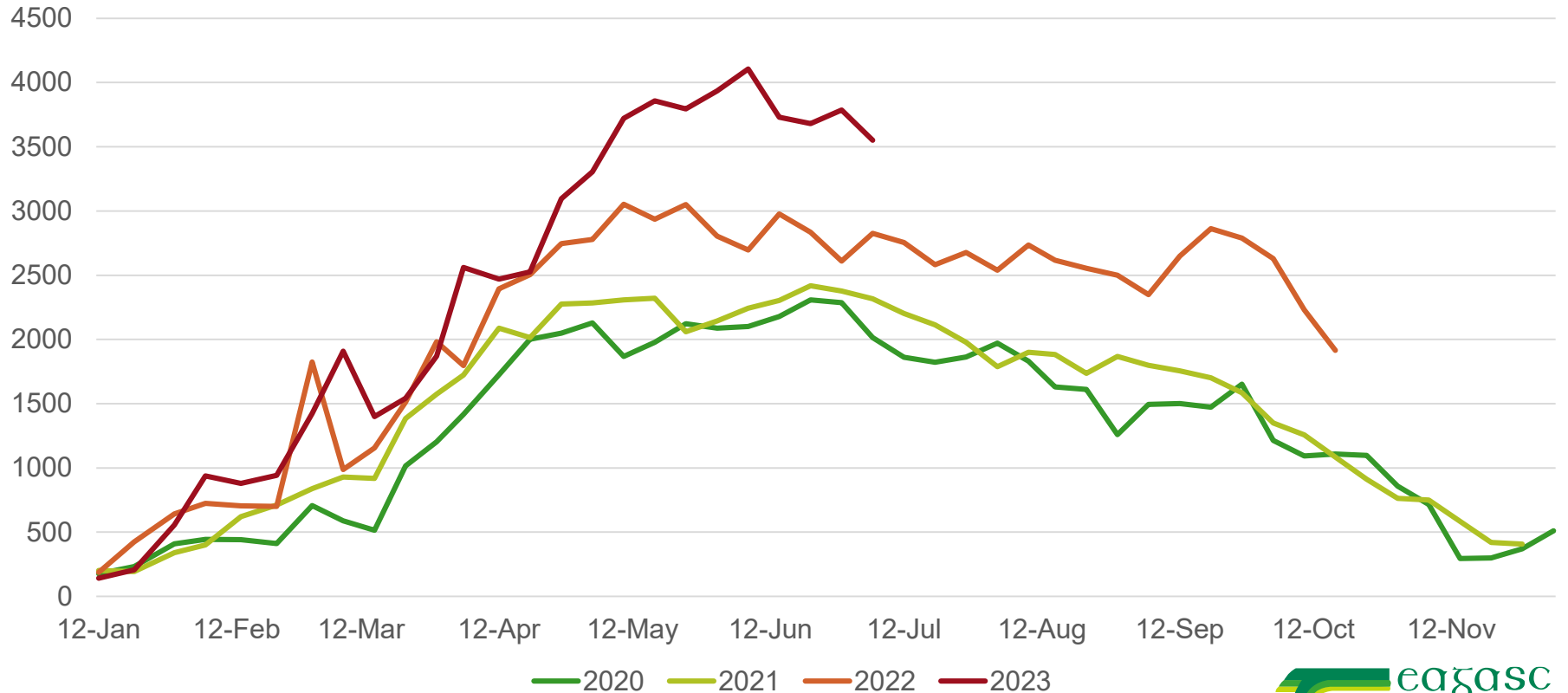
Dairy and Drystock Growth (kg DM/ha/day)



Grass Demand compared to Growth Rate



Completed Covers Per week



Teagasc Fodder Survey Jun 2023

- Approx. 500 herds completed nationally
- Sample distributed by region, scale, enterprise
- Silage stocks measured
- Projected demand calculated based on planned stock
- Data and calculations completed in PBI

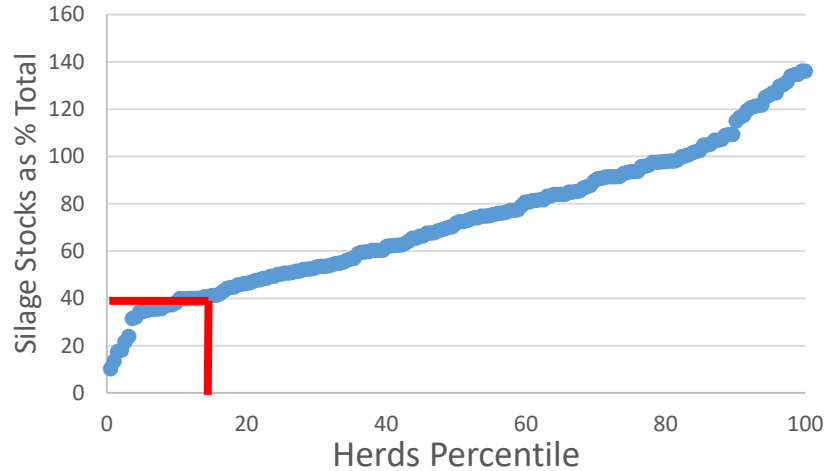
Summary Survey Results after 1st cut

Enterprise	Region	Winter Fodder Balance %
Dairy	Overall Target after first cuts	70%
Dairy	Midlands North East	74%
Dairy	North West	68%
Dairy	South East	71%
Dairy	South West	75%
Drystock	Overall target after first cuts	75-80%
Drystock	Midlands North East	82%
Drystock	North West	82%
Drystock	South East	80%
Drystock	South West	83%

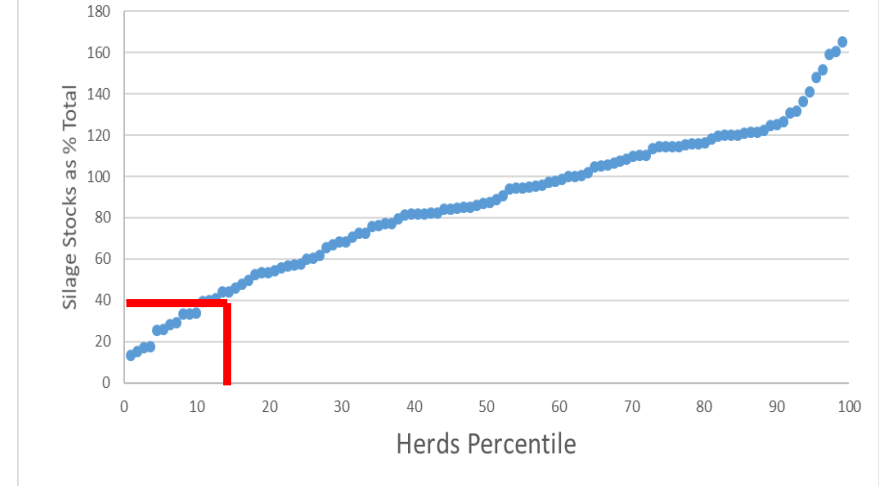
- **Midlands/North East:** Cavan, Dublin, Kildare, Laois, Longford, Louth, Meath, Monaghan, Offaly, Westmeath
- **South East:** Carlow, Kilkenny, Tipperary, Waterford, Wexford, Wicklow
- **South West:** Clare, Cork, Kerry, Limerick
- **North West:** Donegal, Galway, Leitrim, Mayo, Roscommon, Sligo

Summary Results after 1st cut

Distribution of Stocks % Dairy



Distribution of Stocks % Drystock



- Charts show distribution of dairy and drystock herds based on % of silage stocks on hand
- 15% of herds (approx.) have <40% of silage stocks made after first cut
- Focus required to bring these herds to 100% by early September

PBI Interface

Livestock Details

ADD LIVESTOCK TYPE

PRINT

UPDATE

STOCK	NO. OF DAYS	STOCK NO.	STOCK WT.	DMI %	TOTAL DMI - KG/DAY	MEAL FED KG/DAY	FORAGE INTAKE KG DM/DAY	TOTAL TONNES OF FORAGE DM REQUIRED	TOTAL TONNES OF MEAL REQUIRED
Spring Milkers	90	140	600	2.2	13.2	0	13.2	166.32	0
✖ Suckler Cows			650	1.7	11.1	0	11.1	0	0
✖ Autumn Milkers			600	3.2	19.2	0	19.2	0	0
Dry Cows	70	140	650	1.8	11.7	0	11.7	114.66	0
✖ 1 - 2 years			500	1.9	9.5	0	9.5	0	0
✖ >2 years			600	2	12	0	12	0	0
6 - 12 months	130	42	310	1.9	5.9	0	5.9	32.21	0
✖ 0 - 6 months			150	2.1	3.2	0	3.2	0	0
✖ Lactating Ewes			80	2.2	1.8	0	1.8	0	0
✖ Store Lamb			45	2	0.9	0	0.9	0	0
✖ Lambs			0	2	0	0	0	0	0
Stock Bull	140	2	600	2.2	13.2	0	13.2	3.7	0
✖ Rams			100	1.5	1.5	0	1.5	0	0
✖ Dry Ewes / Hoggets			65	1.5	1	0	1	0	0
Total Required								316.89	0

Silage / Bales

RENAME BALES

ADD NEW BALES

RENAME PITS

ADD NEW PIT

HOME STORED FORAGE	LENGTH (M)	WIDTH (M)	HEIGHT (M)	CLAMP VOLUME (CUBIC METRES)	FRESH WEIGHT AVAILABLE (TONNES)	EST. DRY MATTER % OF FORAGE	TOTAL TONNES OF FORAGE DM AVAILABLE ON THE FARM
Grass Silage (Pitted)	28	13	3	1092	709.8	26	184.55
Grass Silage (Pitted) - Second	6	13	3	234	152.1	26	39.55
Maize Silage (Pitted)				0	0	32	0
Wholecrop Silages (Pitted)				0	0	45	0
	NO. OF BALES ON FARM	WEIGHT OF EACH BALE (KG)					
Grass Silage (4x4 Round Bales)	68	800			54.4	30	16.32
Hay (4 x4 Round Bales)		300			0	85	0
Straw (4 x 4 Round bales)		150			0	85	0
GRAZING	HECTARES	AVG COVER (KG DM/HA)					
Autumn Grass							0
Spring Grass							0
Other Grazing							0
Kale/Rape							0
Total Tonnes of Forage DM Available on the Farm					916.3		240.42

Summary

UPDATE

Total Required t/DM	316.89
Total in stock t/DM	240.42
Surplus/deficit t/DM	-76.5
% required in stock	75.9

Summary

- Current/cumulative pasture growth relatively normal. Focus should turn to building grass covers over next weeks
- Winter feed stocks largely on target (provided normal second cut and autumn weather)
 - No systems or regional differences
- **Around 15% of herds <40% of winter feed in stock**
 - Assess current farm situation – feeds on hand, planned stock, planned second cuts
 - Cash budget to account for potential cost of extra feed
 - Plan for earlier offloading of non-productive stock
 - Take out any surplus grass as bales asap to correct quality
 - Build grass covers from mid August
 - Longer term, review whole farm stocking rate
 - Teagasc advisers available to discuss all these issues/options