

Teagasc Johnstown Castle
Teagasc/ABP Dairy Beef Research Programme

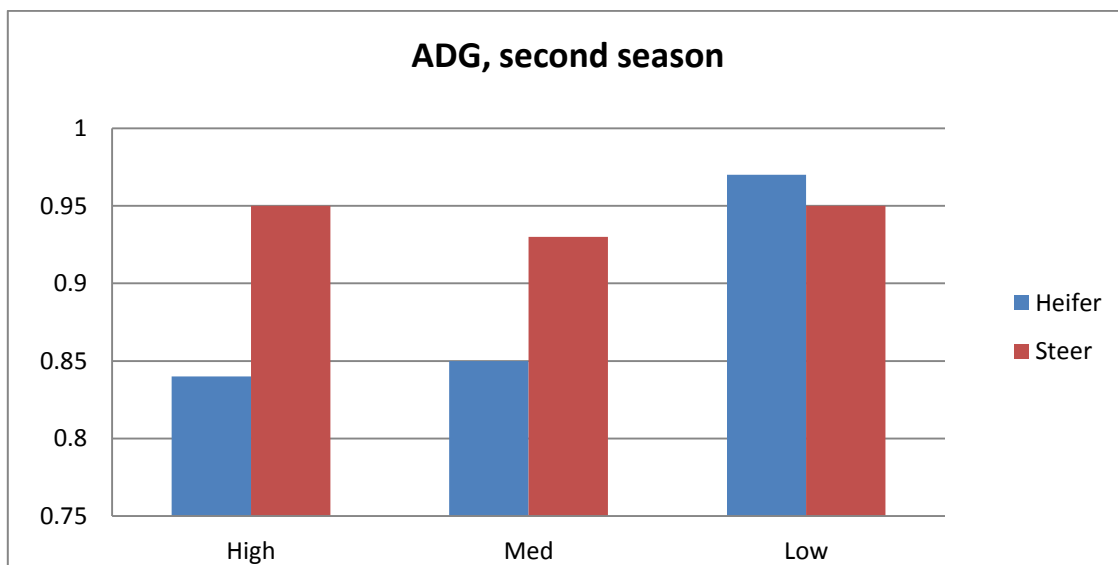
Update: 09-10-2018

Animal Performance:

Older cattle

- The 18 month old cattle were weighed today, 9th Oct. They averaged 470 kg (19 kg ahead of last year)
- The heifers continue to be fed ~4kg conc./head/day. They will be weighed and BCS again in two weeks' time, at that point there should be some fit for slaughter.
- The steers are doing well, however the medium farmlet has become tight on grass which is impacting performance.

	Heifer LW	Steer LW
High	457	482
Medium	450	473
Low	470	484



Calves

- The calves are being supplemented with ~2kg conc./head/day.
- The calves will be weighed next week. Dung samples will be taken to check for worms.
- The calves are grazing lighter covers of 600-1000kg DM/ha.

Grass Management:

- Grass growth for last week averaged 34 kg DM/ha/day. The regrowth on silage paddocks is excellent and it is hoped to get one grazing off the silage paddocks before closing.
- Grass DM is around 16%. Pre-grazing yields are ~1050 kg DM/ha.

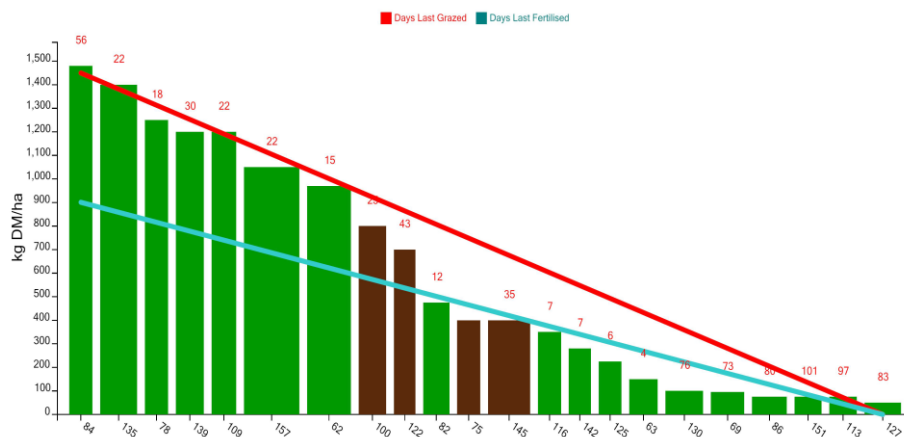
Teagasc Johnstown Castle Teagasc/ABP Dairy Beef Research Programme

- The medium farmlet is extremely tight for grass. Slurry and FYM are being spread on grazed paddocks.
- Paddocks began being closed this week; the aim is to have a closing farm cover of 550 kg DM/ha in November. As growth rates are not much higher than the demand, it is difficult to build farm cover. Once heifers begin being killed, our demand will drop. The finishing meal allocation to the heifers may need to be increased in order to reduce demand for grass.

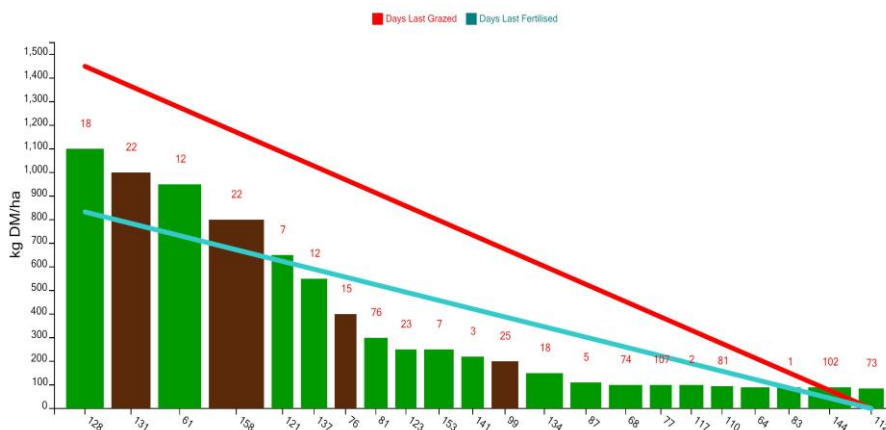
Farm cover 02/10/18

	Growth/ha (kg DM/ha/day)	Demand/ha (kg DM/ha/day)	Farm Cover (kg DM/ha)	LU/ha	Days Ahead
High	34	31	589	3.44	19
Medium	37	28	399	3.18	14
Low	32	23	466	2.88	20

High stocking density



Medium stocking density



Teagasc Johnstown Castle

Teagasc/ABP Dairy Beef Research Programme

Low stocking density

