

Ballyhaise Weekly Farm Notes - Monday 24/5/2010

A. Critical Issues

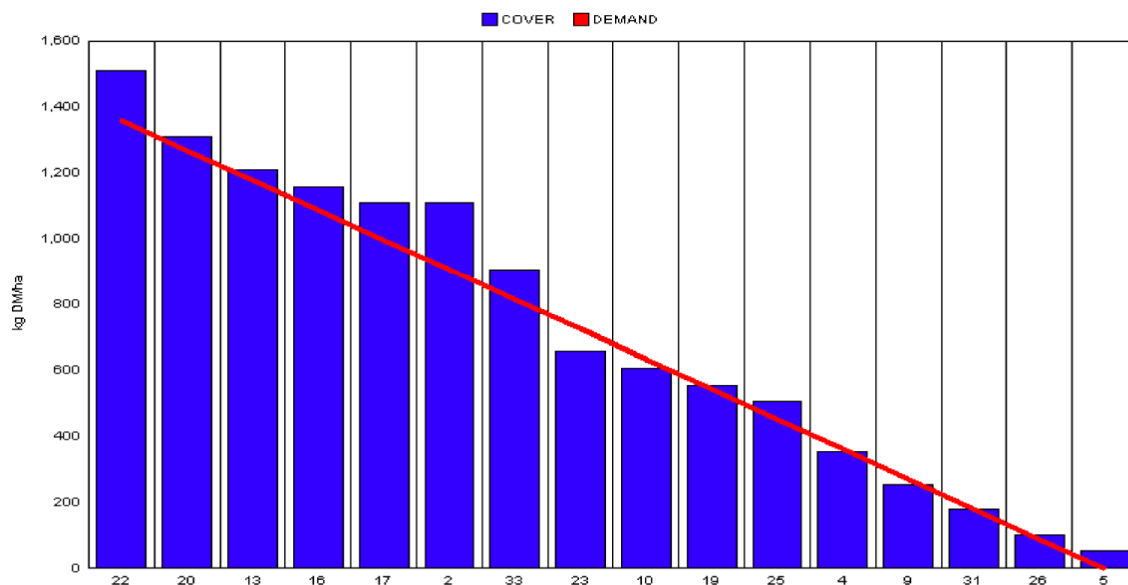
1. Maximise cow intakes of pasture and maintain residual at 3.5cm.
2. Ensure cows are getting better fed each week.
3. Treat high SCC cows and reduce risk of cross infection.

B. On farm situation

1. Soil temperature today is 14°C.
2. Total weekly rainfall is 5mm.
3. Average growth was 95kgDM/ha/day, (19% DM).
4. Feeding 1kg of concentrate.
5. Farm feed

wedge.

Teagasc, Dairy Production Department, Moorepark		GrazePlan - Grass Measurement Report	
Group : TEAGASC RESEARCH FARMS		Date Produced 26-MAY-10	
Farm : Ballyhaise Farm		Ballyhaise BMW region systems comparison	
Date : 24-MAY-10		Treatment : 3.1 stocking rate	
Rotation Length :	18	Farm Cover (kg DM/ha) :	723
Grass Allocation /cow (kg grass dry matter/LU	16	Farm Cover (kg DM/LU) :	153
Concentrate Fed (kg/cow) :	1	Current Monthly Fertilizer Rate (kg/ha) :	
Silage Fed (kg DM/cow) :	0	Stock Rate (LU/ha) :	4.73
N Application Rate (units/acre) :		Growth Rate :	95
N Application Rate (kg/ha) :		Farm Demand (kg DM/LU/day) ::	76
Residual Height :	3.5	Target pregrazing yield (kg DM/ha) :	1362
Total Livestock :	63		



6. Paddocks 37 and 39 have been removed from rotation for reseedling. The area was sown last week half with Tyrella monoculture and the other half with Abermagic. These are both late heading diploids. The area is prone to flooding so persistence is our first priority.
7. Small amount of rain on Tuesday night has improved growth rates dramatically. Paddocks 30 and 21 were skipped over last week, they will be baled this week at a cover of around 2200 kg DM/ha. Paddocks 8 and 36 will be skipped over this week (cover of 1600 kg DM/ha) and baled when they reach a cover of 2500 kg DM/ha.
8. Feeding 1kg of high cal-mag concentrate.
9. Cows were tail painted on the 10th of April. Mating start date is the 10th of May for the cows and the 5th of May for the heifers. Submission rate for the first 2 weeks of bulling is 57% (36 cows out of 63). Tail paint is topped up weekly.
10. 39 out of the 40 heifers for breeding were submitted in the first 2 weeks. They are now running with the bull.
11. Average milk yield is 23.82kg at 4.63% fat and 3.39% protein (1.89kg MS/cow), lactose 4.86%, SCC 208k, TBC 5k.

C. Critical short term actions :

- Observe heats 3 times daily.
- Tail paint topped up once a week.
- Ensure bulling heifers and calves get fresh grass every 2-3 days.

www.agresearch.teagasc.ie/moorepark/



Dairy Production Research in the Northeast

Objective:

To increase the profitability of milk production per hectare in the BMW region through improved pasture management and utilisation in combination with genetic improvement using the Economic Breeding Index.

Year	2004	2007	2008
Grazing season (days)	226	271	280
Herd EBI (€)	28	51	55
Stocking Rate (Cows/ha)	2.2	2.6	2.9
Concentrate (kg/cow)	700	400	250
Milk (kg/ha)	12,381	11,890	13,340
Milk Solids (kg/ ha)	928	931	1,150
6 week pregnancy rate (%)	38	55	65
Farm Profit (30 ha)	37,417	56,182	-

Week:23/05/10	HG system	HS system
Stocking rate (cows/ha)	3.1	4.6
Milk yield (kg/cow/day)	23.82	25.11
% Fat	4.63	4.18
% Protein	3.39	3.44
% Lactose	4.86	4.85
Milk solids (kg/cow/day)	1.89	1.91
Supplement (kg/cow/day)		
Concentrate	1	3
Silage	0	0
Cumulative		
Milk yield (kg/cow)	1721	1673
% Fat	4.57	4.52
% Protein	3.35	3.36
% Lactose	4.82	4.81
Milk solids (kg/cow)	137	133
Bodyweight (kg)	474	457
Body Condition Score	3.0	2.9
Supplement (kg/cow)		
Concentrate	282	427
Silage to milking cows (kg DM/cow)	137	160
Maize (kg DM/cow)	0	114
Conserved silage (kg DM/cow)	817	126
Total silage fed (kg DM/cow)	930	1233

