

Ballyhaise Weekly Farm Notes - Monday 8/6/2010

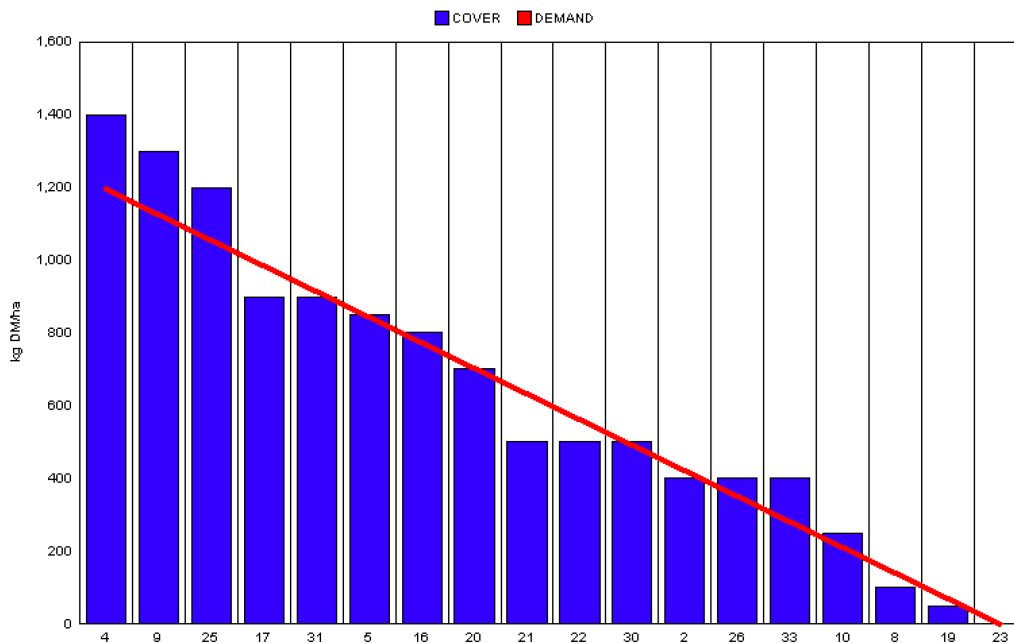
A. Critical Issues

1. Maximise cow intakes of pasture and maintain residual at 3.5cm.
2. Ensure cows are getting better fed each week.
3. Treat high SCC cows and reduce risk of cross infection.

B. On farm situation

1. Soil temperature today is 18.5°C.
2. Total weekly rainfall is 10.5mm.
3. Average growth was 60kgDM/ha/day, (15% DM).
4. Feeding 0.5kg of concentrate.
5. Farm feed wedge (8/6/10).

| Teagasc, Dairy Production Department, Moorepark | | GrazePlan - Grass Measurement Report | |
|---|-----|---|------|
| Group : TEAGASC RESEARCH FARMS | | Date Produced 09-JUN-10 | |
| Farm : Ballyhaise Farm | | Ballyhaise BMW region systems comparison | |
| Date : 08-JUN-10 | | Treatment : 3.1 stocking rate | |
| Rotation Length : | 18 | Farm Cover (kg DM/ha) : | 629 |
| Grass Allocation /cow (kg grass dry matter/LU) | 16 | Farm Cover (kg DM/LU) : | 151 |
| Concentrate Fed (kg/cow) : | 1 | Current Monthly Fertilizer Rate (kg/ha) : | |
| Silage Fed (kg DM/cow) : | 0 | Stock Rate (LU/ha) : | 4.16 |
| N Application Rate (units/acre) : | | Growth Rate : | 60 |
| N Application Rate (kg/ha) : | | Farm Demand (kg DM/LU/day) :: | 67 |
| Residual Height : | 3.5 | Target pregrazing yield (kg DM/ha) : | 1198 |
| Total Livestock : | 63 | | |



6. Growth rate has improved this week due to improved soil temperatures and rainfall which has reversed soil moisture deficits. Paddock 8 had been skipped for silage but had to be grazed last week due to low covers. This paddock had a cover of 2100kg DM / ha when grazed and was grazed to residual of 4.2 cm.

This allowed the rest of the farm to regain cover without feeding extra supplements. It has effected milk yield (dropped by 1 litre/ cow since last week). This could have been avoided by accepting a higher residual and earmarking this paddock for silage in the next rotation.

7. 27 units of CAN spread once a week on grazed paddocks.
8. Feeding 0.5kg of high cal-mag concentrate.
9. Cows were tail painted on the 10th of April. Mating start date is the 10th of May for the cows and the 5th of May for the heifers. 24 day submission rate is 90% (57 cows out of 63). Tail paint is topped up once weekly. The six cows which have not been served were scanned last week. Two were late calvers that needed wash outs, two had their first heat 10 days ago and two had cycled and were missed.
10. Average milk yield is 22.07kg at 4.05% fat and 3.45% protein (1.64kg MS/cow), lactose 4.85%, SCC 208k, TBC 5k.

C. Critical short term actions :

- Observe heats 3 times daily.
- Tail paint topped up once a week.
- Ensure bulling heifers and calves get fresh grass every 2-3 days.

www.agresearch.teagasc.ie/moorepark/



Dairy Production Research in the Northeast

Objective:

To increase the profitability of milk production per hectare in the BMW region through improved pasture management and utilisation in combination with genetic improvement using the Economic Breeding Index.

| Year | 2004 | 2007 | 2008 |
|---------------------------|--------|--------|--------|
| Grazing season (days) | 226 | 271 | 280 |
| Herd EBI (€) | 28 | 51 | 55 |
| Stocking Rate (Cows/ha) | 2.2 | 2.6 | 2.9 |
| Concentrate (kg/cow) | 700 | 400 | 250 |
| Milk (kg/ha) | 12,381 | 11,890 | 13,340 |
| Milk Solids (kg/ ha) | 928 | 931 | 1,150 |
| 6 week pregnancy rate (%) | 38 | 55 | 65 |
| Farm Profit (30 ha) | 37,417 | 56,182 | - |

| Week:06/06/10 | HG system | HS system |
|------------------------------------|------------------|------------------|
| Stocking rate (cows/ha) | 3.1 | 4.6 |
| Milk yield (kg/cow/day) | 22.07 | 24.63 |
| % Fat | 4.05 | 4.46 |
| % Protein | 3.45 | 3.48 |
| % Lactose | 4.85 | 4.86 |
| Milk solids (kg/cow/day) | 1.64 | 1.95 |
| Supplement (kg/cow/day) | | |
| Concentrate | 1 | 4 |
| Silage | 0 | 0 |
| Cumulative | | |
| Milk yield (kg/cow) | 2006 | 2007 |
| % Fat | 4.42 | 4.45 |
| % Protein | 3.36 | 3.36 |
| % Lactose | 4.82 | 4.83 |
| Milk solids (kg/cow) | 155 | 157 |
| Bodyweight (kg) | 475 | 448 |
| Body Condition Score | 3.0 | 2.9 |
| Supplement (kg/cow) | | |
| Concentrate | 297 | 495 |
| Silage to milking cows (kg DM/cow) | 137 | 160 |
| Maize (kg DM/cow) | 0 | 114 |
| Conserved silage (kg DM/cow) | 817 | 126 |
| Total silage fed (kg DM/cow) | 930 | 1233 |

