

## Ballyhaise Weekly Farm Notes - Monday 28/6/2010

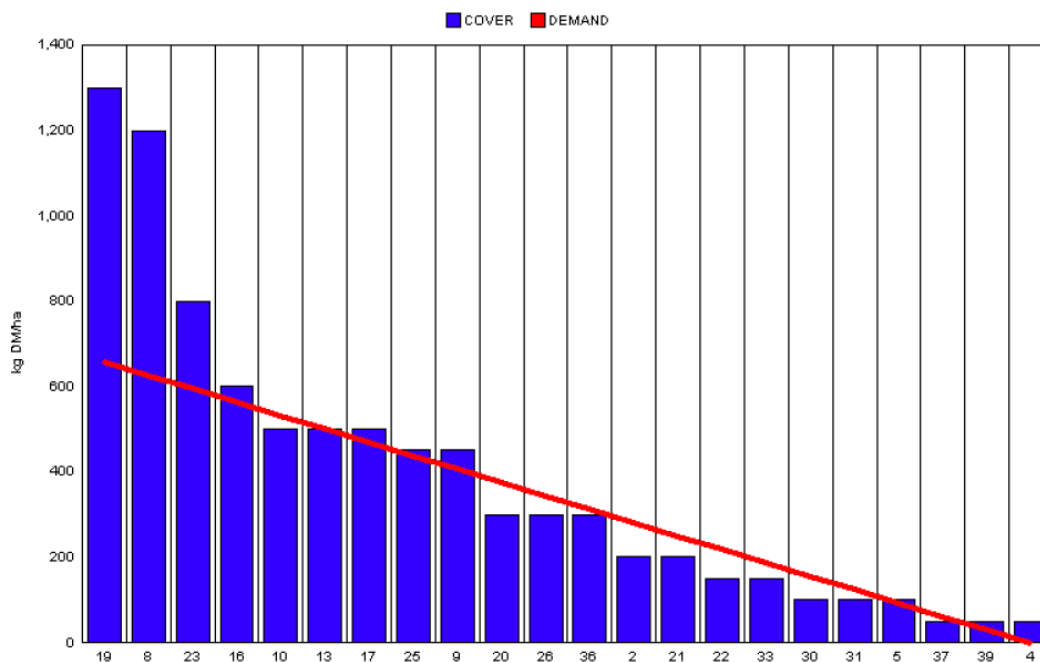
### A. Critical Issues

1. Maximise cow intakes of pasture and maintain residual at 3.5cm.
2. Ensure cows are getting better fed each week.
3. Treat high SCC cows and reduce risk of cross infection.

### B. On farm situation

1. Soil temperature today is 17.5°C.
2. Total weekly rainfall is 1.1mm.
3. Average growth was 23kgDM/ha/day, (16% DM).
4. Feeding 4kg of concentrate and 3kg of bale silage.
5. Farm feed wedge (28/6/10).

Teagasc, Dairy Production Department, Moorepark		GrazePlan - Grass Measurement Report	
Group : TEAGASC RESEARCH FARMS		Date Produced 01-JUL-10	
Farm : Ballyhaise Farm		Ballyhaise BMW region systems comparison	
Date : 28-JUN-10		Treatment : 3.1 stocking rate	
Rotation Length :	21	Farm Cover (kg DM/ha) :	341
Grass Allocation /cow (kg grass dry matter/LU)	10	Farm Cover (kg DM/LU) :	109
Concentrate Fed (kg/cow) :	4	Current Monthly Fertilizer Rate (kg/ha) :	
Silage Fed (kg DM/cow) :	3	Stock Rate (LU/ha) :	3.14
N Application Rate (units/acre) :		Growth Rate :	23
N Application Rate (kg/ha) :		Farm Demand (kg DM/LU/day) ::	31
Residual Height :	3.5	Target pregrazing yield (kg DM/ha) :	660
Total Livestock :	63		



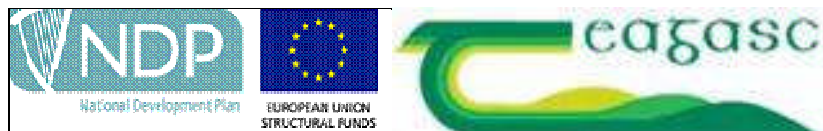
6. Growth rate has dropped again this week due to soil moisture deficit. 4kg of concentrate and 3kg of bale silage being fed to hold rotation length at 21 days. Another cover will be done on Friday to asses the situation.

7. Reseeded paddocks 39 and 37 were grazed at the weekend before the rain. The cover was very variable with the drier parts just starting to germinate and the damp parts with a cover of 900kgs. They have been top dressed with 27 units of N before the rain.
8. No fertiliser was spread last week due to very dry conditions. All paddocks that have been grazed since then are getting 27 units of CAN this week as rain is forecast.
9. Spreading watery slurry from lagoon on grazed paddocks.
10. Cows were tail painted on the 10<sup>th</sup> of April. Mating start date is the 10<sup>th</sup> of May for the cows and the 5<sup>th</sup> of May for the heifers. 24 day submission rate is 90% (57 cows out of 63). Tail paint is topped up once weekly. All cows have been submitted. Bulls will be introduced this week and AI will continue for one more week.
11. Average milk yield is 21.13kg at 4.20% fat and 3.45% protein (1.60kg MS/cow), lactose 4.84%, SCC 180k, TBC 5k.

**C. Critical short term actions :**

- Observe heats 3 times daily.
- Tail paint topped up once a week.
- Ensure bulling heifers and calves get fresh grass every 2-3 days.

[www.agresearch.teagasc.ie/moorepark/](http://www.agresearch.teagasc.ie/moorepark/)



## Dairy Production Research in the Northeast

### Objective:

To increase the profitability of milk production per hectare in the BMW region through improved pasture management and utilisation in combination with genetic improvement using the Economic Breeding Index.

Year	2004	2007	2008
Grazing season (days)	226	271	280
Herd EBI (€)	28	51	55
Stocking Rate (Cows/ha)	2.2	2.6	2.9
Concentrate (kg/cow)	700	400	250
Milk (kg/ha)	12,381	11,890	13,340
Milk Solids (kg/ ha)	928	931	1,150
6 week pregnancy rate (%)	38	55	65
Farm Profit (30 ha)	37,417	56,182	-

<b>Week:27/06/10</b>	<b>HG system</b>	<b>HS system</b>
<b>Stocking rate (cows/ha)</b>	<b>3.1</b>	<b>4.6</b>
Milk yield (kg/cow/day)	21.13	23.05
% Fat	4.20	4.11
% Protein	3.45	3.42
% Lactose	4.84	4.86
Milk solids (kg/cow/day)	1.60	1.73
Supplement (kg/cow/day)		
Concentrate	3	4
Silage	0	3
<b>Cumulative</b>		
Milk yield (kg/cow)	2450	2517
% Fat	4.38	4.35
% Protein	3.37	3.36
% Lactose	4.81	4.84
Milk solids (kg/cow)	189	194
Bodyweight (kg)	498	491
Body Condition Score	2.92	2.95
Supplement (kg/cow)		
Concentrate	310	568
Silage to milking cows (kg DM/cow)	137	160
Maize (kg DM/cow)	0	114
Conserved silage (kg DM/cow)	817	126
Total silage fed ( kg DM/cow)	930	1233