

Ballyhaise Weekly Farm Notes - Monday 5/7/2010

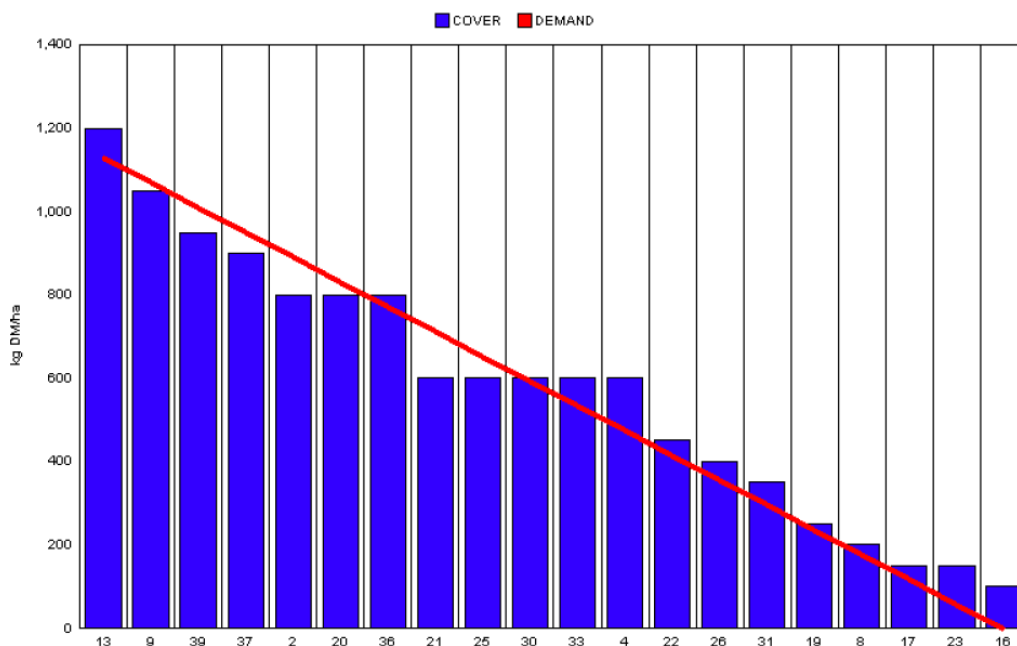
A. Critical Issues

1. Maximise cow intakes of pasture and maintain residual at 3.5cm.
2. Ensure cows are getting better fed each week.
3. Treat high SCC cows and reduce risk of cross infection.

B. On farm situation

1. Soil temperature today is 17.5°C.
2. Total weekly rainfall is 32mm.
3. Average growth was 70kgDM/ha/day, (15% DM).
4. Farm feed wedge (5/7/10).

Teagasc, Dairy Production Department, Moorepark		GrazePlan - Grass Measurement Report	
Group : TEAGASC RESEARCH FARMS		Date Produced 06-JUL-10	
Farm : Ballyhaise Farm		Ballyhaise BMW region systems comparison	
Date : 05-JUL-10		Treatment : 3.1 stocking rate	
Rotation Length :	21	Farm Cover (kg DM/ha) :	601
Grass Allocation /cow (kg grass dry matter/LU)	16	Farm Cover (kg DM/LU) :	179
Concentrate Fed (kg/cow) :	0	Current Monthly Fertilizer Rate (kg/ha) :	
Silage Fed (kg DM/cow) :	0	Stock Rate (LU/ha) :	3.36
N Application Rate (units/acre) :		Growth Rate :	70
N Application Rate (kg/ha) :		Farm Demand (kg DM/LU/day) ::	54
Residual Height :	3.5	Target pregrazing yield (kg DM/ha) :	1130
Total Livestock :	63		



5. Arrival of rain last week has boosted growth rates significantly. This has allowed us to drop bales and concentrate out of the diet. Also the 4.3 ha of reseed (37 and 39) are now in our rotation which will lift growth rates, they averaged 120kgDM/day over the past 7 days. They will be grazed every 10 to 12 days.

6. All paddocks that have been grazed this week are getting 27 units of CAN.
7. Spreading watery slurry from lagoon on grazed paddocks.
8. Cows were tail painted on the 10th of April. Mating start date is the 10th of May for the cows and the 5th of May for the heifers. 24 day submission rate is 90% (57 cows out of 63). Tail paint is topped up once weekly. All cows have been submitted. Bulls were introduced last week and AI will continue for one more week.
9. Average milk yield is 21.12kg at 4.20% fat and 3.45% protein (1.60kg MS/cow), lactose 4.85%, SCC 180k, TBC 5k.

C. Critical short term actions :

- Observe heats 3 times daily.
- Tail paint topped up once a week.
- Ensure bulling heifers and calves get fresh grass every 2-3 days.

www.agresearch.teagasc.ie/moorepark/



Dairy Production Research in the Northeast

Objective:

To increase the profitability of milk production per hectare in the BMW region through improved pasture management and utilisation in combination with genetic improvement using the Economic Breeding Index.

Year	2004	2007	2008
Grazing season (days)	226	271	280
Herd EBI (€)	28	51	55
Stocking Rate (Cows/ha)	2.2	2.6	2.9
Concentrate (kg/cow)	700	400	250
Milk (kg/ha)	12,381	11,890	13,340
Milk Solids (kg/ ha)	928	931	1,150
6 week pregnancy rate (%)	38	55	65
Farm Profit (30 ha)	37,417	56,182	-

Week Ending :05/07/10	HG system	HS system
Stocking rate (cows/ha)	3.1	4.6
Milk yield (kg/cow/day)	21.12	22.10
% Fat	4.20	4.11
% Protein	3.45	3.41
% Lactose	4.85	4.86
Milk solids (kg/cow/day)	1.60	1.65
Supplement (kg/cow/day)		
Concentrate	4	4
Silage	3	4
Cumulative		
Milk yield (kg/cow)	2598	2656
% Fat	4.37	4.33
% Protein	3.37	3.36
% Lactose	4.82	4.84
Milk solids (kg/cow)	201	205
Bodyweight (kg)	498	491
Body Condition Score	2.92	2.95
Supplement (kg/cow)		
Concentrate	338	596
Silage to milking cows (kg DM/cow)	158	188
Maize (kg DM/cow)	0	114
Conserved silage (kg DM/cow)	817	126
Total silage fed (kg DM/cow)	930	1233