

Ballyhaise Weekly Farm Notes - Monday 12/7/2010

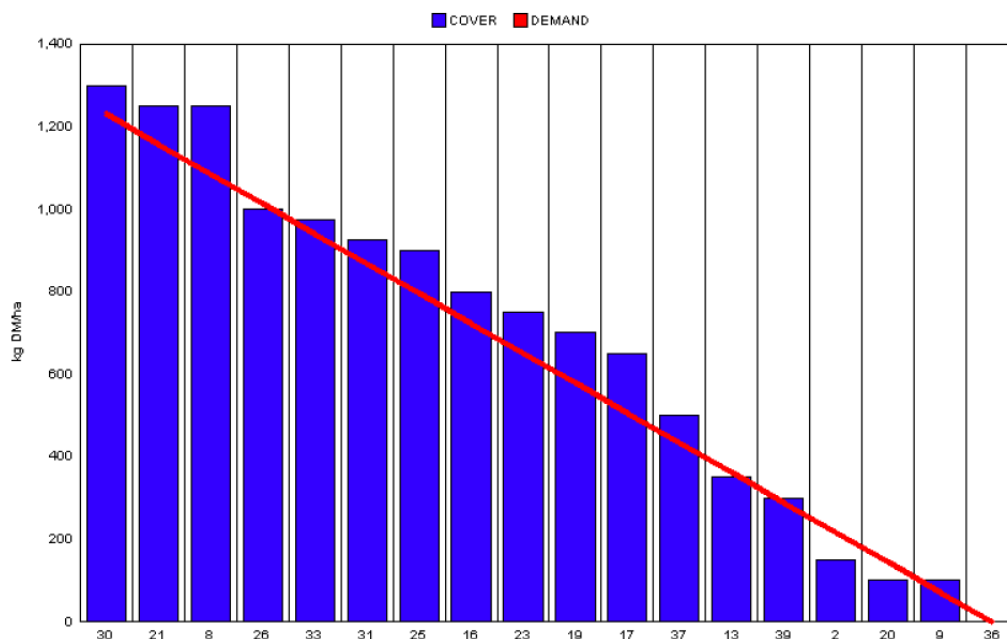
A. Critical Issues

1. Maximise cow intakes of pasture and maintain residual at 3.5cm.
2. Ensure cows are getting better fed each week.
3. Treat high SCC cows and reduce risk of cross infection.

B. On farm situation

1. Soil temperature today is 17.5°C.
2. Total weekly rainfall is 26mm.
3. Average growth was 73kgDM/ha/day, (16% DM).
4. Farm feed wedge (12/7/10).

Moorepark Animal & Grassland Research and Innovation Centre		GrazePlan - Grass Measurement Report	
Group : TEAGASC RESEARCH FARMS		Date Produced 14-JUL-10	
Farm : Ballyhaise Farm		Ballyhaise BMW region systems comparison	
Date : 13-JUL-10		Treatment : 3.1 stocking rate	
Rotation Length :	21	Farm Cover (kg DM/ha) :	654
Grass Allocation /cow (kg grass dry matter/LU)	16	Farm Cover (kg DM/LU) :	178
Concentrate Fed (kg/cow) :	0	Current Monthly Fertilizer Rate (kg/ha) :	
Silage Fed (kg DM/cow) :	0	Stock Rate (LU/ha) :	3.67
N Application Rate (units/acre) :		Growth Rate :	73
N Application Rate (kg/ha) :		Farm Demand (kg DM/LU/day) ::	59
Residual Height :	3.5	Target pregrazing yield (kg DM/ha) :	1234
Total Livestock :	63		



5. Recent rain has boosted growth rates; this has allowed us to drop out paddocks 4,5,10 and 22. The reseeded paddocks 37 and 39 are being grazed every 10 days, this means that we now have more flexibility and can take surpluses off paddocks which have gone steamy or were not grazed out to the right residual over the last number of rotations.

6. Even with these paddocks out there is a surplus emerging. Paddock 8 is earmarked for silage at the end of the week if growing conditions remain favourable.
7. All paddocks that have been grazed this week are getting 27 units of CAN.
8. Cows were tail painted on the 10th of April. Mating start date is the 10th of May for the cows and the 5th of May for the heifers. 24 day submission rate is 90% (57 cows out of 63). Tail paint is topped up once weekly. All cows have been submitted. Bulls were introduced two weeks ago and AI will continue for one more week.
9. Average milk yield is 20.42kg at 4.31% fat and 3.52% protein (1.58kg MS/cow), lactose 4.70%, SCC 208k, TBC 17k.

C. Critical short term actions :

- Tail paint topped up once a week.
- Ensure bulling heifers and calves get fresh grass every 2-3 days.
- Keep grazing reseeded every 10 – 12 days.

www.agresearch.teagasc.ie/moorepark/



Dairy Production Research in the Northeast

Objective:

To increase the profitability of milk production per hectare in the BMW region through improved pasture management and utilisation in combination with genetic improvement using the Economic Breeding Index.

Year	2004	2007	2008
Grazing season (days)	226	271	280
Herd EBI (€)	28	51	55
Stocking Rate (Cows/ha)	2.2	2.6	2.9
Concentrate (kg/cow)	700	400	250
Milk (kg/ha)	12,381	11,890	13,340
Milk Solids (kg/ ha)	928	931	1,150
6 week pregnancy rate (%)	38	55	65
Farm Profit (30 ha)	37,417	56,182	-

Week Ending :11/07/10	HG system	HS system
Stocking rate (cows/ha)	3.1	4.6
Milk yield (kg/cow/day)	20.42	21.84
% Fat	4.31	4.16
% Protein	3.52	3.49
% Lactose	4.70	4.78
Milk solids (kg/cow/day)	1.58	1.66
Supplement (kg/cow/day)		
Concentrate	0	2
Silage	0	0
Cumulative		
Milk yield (kg/cow)	2741	2809
% Fat	4.37	4.32
% Protein	3.38	3.37
% Lactose	4.81	4.84
Milk solids (kg/cow)	212	216
Bodyweight (kg)	498	491
Body Condition Score	2.92	2.95
Supplement (kg/cow)		
Concentrate	338	610
Silage to milking cows (kg DM/cow)	158	188
Maize (kg DM/cow)	0	114

Conserved silage (kg DM/cow)	817		126	
Total silage fed (kg DM/cow)	930		1233	