

Ballyhaise Weekly Farm Notes - Monday 26/7/2010

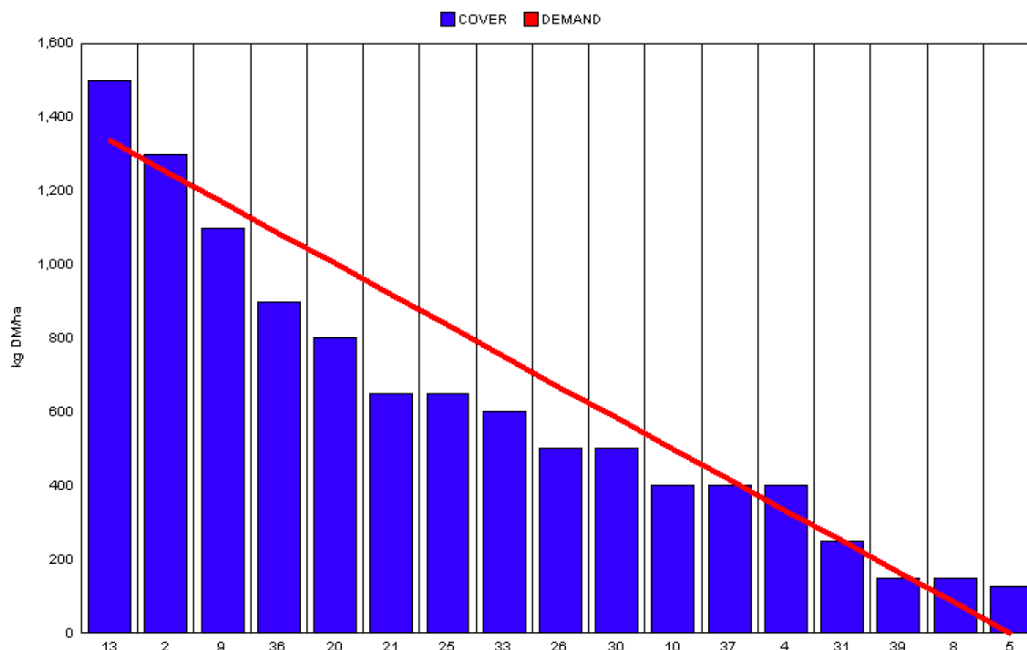
A. Critical Issues

1. Maximise cow intakes of pasture and maintain residual at 3.5cm.
2. Ensure cows are getting better fed each week.
3. Treat high SCC cows and reduce risk of cross infection.

B. On farm situation

1. Soil temperature today is 16°C.
2. Total weekly rainfall is 17.6mm.
3. Average growth was 72kgDM/ha/day, (16% DM).
4. Farm feed wedge (26/7/10).

Moorepark Animal & Grassland Research and Innovation Centre		GrazePlan - Grass Measurement Report	
Group : TEAGASC RESEARCH FARMS		Date Produced 28-JUL-10	
Farm : Ballyhaise Farm		Ballyhaise BMW region systems comparison	
Date : 26-JUL-10		Treatment : 3.1 stocking rate	
Rotation Length :	21	Farm Cover (kg DM/ha) :	552
Grass Allocation /cow (kg grass dry matter/LU	16	Farm Cover (kg DM/LU) :	138
Concentrate Fed (kg/cow) :	0	Current Monthly Fertilizer Rate (kg/ha) :	
Silage Fed (kg DM/cow) :	0	Stock Rate (LU/ha) :	3.99
N Application Rate (units/acre) :		Growth Rate :	72
N Application Rate (kg/ha) :		Farm Demand (kg DM/LU/day) ::	64
Residual Height :	3.5	Target pregrazing yield (kg DM/ha) :	1340
Total Livestock :	63		



5. Growth rate is adequate to meet demand even with 4 ha (20%) removed as silage. Surplus paddocks will be baled as they appear from now on to allow flexibility. There is a slight deficit appearing in the middle of the wedge but

this should not be a problem as the 4 ha of silage will be baled this week dropping the demand per ha down to 50 kg DM / day.

6. All paddocks that have been grazed this week are getting 27 units of CAN.
7. Cows were tail painted on the 10th of April. Mating start date is the 10th of May for the cows and the 5th of May for the heifers. 24 day submission rate is 90% (57 cows out of 63). All cows have been submitted. Bulls were introduced on week seven of the season and will stay in until week 13. Today is the start of week 12.
8. Average milk yield is 18.50kg at 4.20% fat and 3.47% protein (1.41kg MS/cow), lactose 4.77%, SCC 279k, TBC 17k.

C. Critical short term actions :

- Ensure bulling heifers and calves get fresh grass every 2-3 days.
- Keep grazing reseeds every 10 – 12 days.

www.agresearch.teagasc.ie/moorepark/



Dairy Production Research in the Northeast

Objective:

To increase the profitability of milk production per hectare in the BMW region through improved pasture management and utilisation in combination with genetic improvement using the Economic Breeding Index.

Year	2004	2007	2008
Grazing season (days)	226	271	280
Herd EBI (€)	28	51	55
Stocking Rate (Cows/ha)	2.2	2.6	2.9
Concentrate (kg/cow)	700	400	250
Milk (kg/ha)	12,381	11,890	13,340
Milk Solids (kg/ ha)	928	931	1,150
6 week pregnancy rate (%)	38	55	65
Farm Profit (30 ha)	37,417	56,182	-

Week Ending :24/07/10	HG system	HS system
Stocking rate (cows/ha)	3.1	4.6
Milk yield (kg/cow/day)	18.5	20.31
% Fat	4.20	4.14
% Protein	3.47	3.60
% Lactose	4.77	4.73
Milk solids (kg/cow/day)	1.41	1.56
Supplement (kg/cow/day)		
Concentrate	0	0
Silage	0	0
Cumulative		
Milk yield (kg/cow)	3008	3122
% Fat	4.34	4.30
% Protein	3.38	3.39
% Lactose	4.80	4.82
Milk solids (kg/cow)	232	240
Bodyweight (kg)	489	483
Body Condition Score	2.95	2.99
Supplement (kg/cow)		
Concentrate	338	617
Silage to milking cows (kg DM/cow)	158	188
Maize (kg DM/cow)	0	114
Conserved silage (kg DM/cow)	817	126
Total silage fed (kg DM/cow)	930	1233