

## Ballyhaise Weekly Farm Notes - Monday 3/8/2010

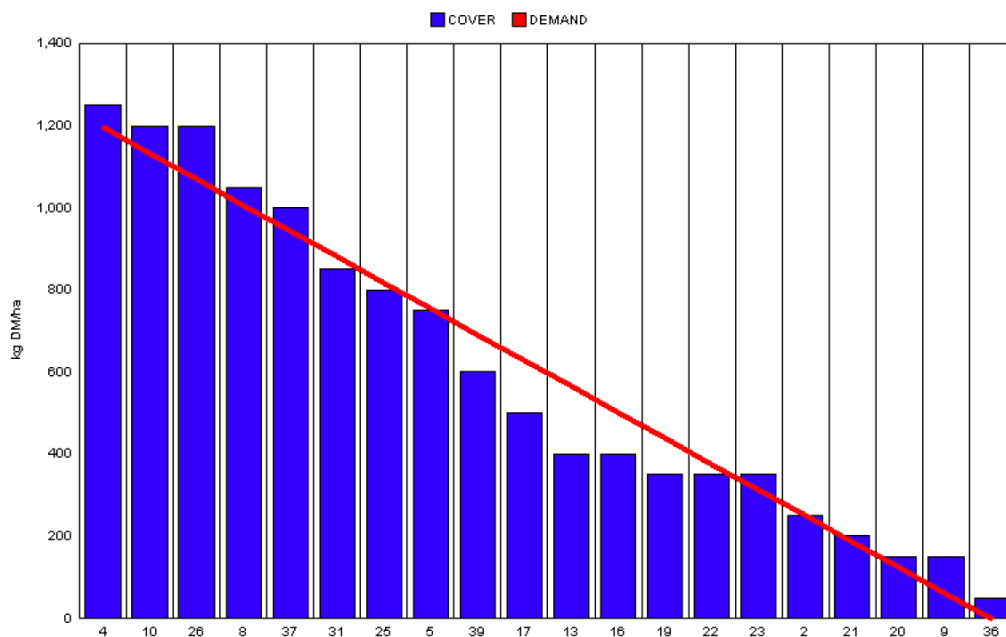
### A. Critical Issues

1. Maximise cow intakes of pasture and maintain residual at 3.5cm.
2. Ensure cows are getting better fed each week.
3. Treat high SCC cows and reduce risk of cross infection.

### B. On farm situation

1. Soil temperature today is 17°C.
2. Total weekly rainfall is 14.3mm.
3. Average growth was 79kgDM/ha/day, (14% DM).
4. Farm feed wedge (3/8/10).

Moorepark Animal & Grassland Research and Innovation Centre		GrazePlan - Grass Measurement Report	
Group : TEAGASC RESEARCH FARMS		Date Produced 04-AUG-10	
Farm : Ballyhaise Farm		Ballyhaise BMW region systems comparison	
Date : 03-AUG-10		Treatment : 3.1 stocking rate	
Rotation Length :	21	Farm Cover (kg DM/ha) :	598
Grass Allocation /cow (kg grass dry matter/LU	16	Farm Cover (kg DM/LU) :	168
Concentrate Fed (kg/cow) :	0	Current Monthly Fertilizer Rate (kg/ha) :	
Silage Fed (kg DM/cow) :	0	Stock Rate (LU/ha) :	3.56
N Application Rate (units/acre) :		Growth Rate :	79
N Application Rate (kg/ha) :		Farm Demand (kg DM/LU/day) ::	57
Residual Height :	3.5	Target pregrazing yield (kg DM/ha) :	1197
Total Livestock :	63		



5. Growth rate is adequate to meet demand even with 2.37 ha (11%) removed as silage. Paddocks 33 and 31 have been skipped and will be baled when weather allows. They both have a cover of 1600kg DM/ ha and neither have been baled yet this year. About 65% of the area has been cut for silage at some stage

during the year; this has allowed us to keep good quality grass ahead of the cows for the majority of the season so far.

6. All paddocks that have been grazed this week are getting 20 units of CAN.
7. Milk yield has dropped steadily over the past 3 weeks (1 litre a week). Solids % has remained steady. This is not a nutritional problem as grass quality is excellent and cow condition has not decreased. The mature cows are still milking quite well but the 1<sup>st</sup> lactation heifers have dropped more dramatically (25% of the herd).
8. Cows were tail painted on the 10<sup>th</sup> of April. Mating start date was the 10<sup>th</sup> of May for the cows and the 5<sup>th</sup> of May for the heifers. 24 day submission rate is 90% (57 cows out of 63). Bulls were introduced on week seven of the season and will stay in until week 13 (next Monday). Still some repeats showing up but activity has decreased dramatically over the last two weeks. 40 cows were scanned in calf for the first 3 week period with another 40 cows and 40 heifers due to be scanned this week.
9. Weighed and Dosed heifers for worms last week, average weight 350kg. They will need to 90% of mature weight (500kg) at calving down or 450kg. This means they need to gain 100kgs in 190 days or 0.52kgs /day. This is achievable even though grass quality tends to be a problem on the heifer block as much of the area is too rough to remove surpluses as silage.
10. Average milk yield is 17.56kg at 4.35% fat and 3.43% protein (1.36kg MS/cow), lactose 4.68%, SCC 202k, TBC 17k.

### **C. Critical short term actions :**

- Ensure bulling heifers and calves get fresh grass every 2-3 days.
- Keep grazing reseeds every 10 – 12 days.
- Dose calves every 6 weeks.

[www.agresearch.teagasc.ie/moorepark/](http://www.agresearch.teagasc.ie/moorepark/)



## Dairy Production Research in the Northeast

### Objective:

To increase the profitability of milk production per hectare in the BMW region through improved pasture management and utilisation in combination with genetic improvement using the Economic Breeding Index.

Year	2004	2007	2008
Grazing season (days)	226	271	280
Herd EBI (€)	28	51	55
Stocking Rate (Cows/ha)	2.2	2.6	2.9
Concentrate (kg/cow)	700	400	250
Milk (kg/ha)	12,381	11,890	13,340
Milk Solids (kg/ ha)	928	931	1,150
6 week pregnancy rate (%)	38	55	65
Farm Profit (30 ha)	37,417	56,182	-

<b>Week Ending :01/08/10</b>	<b>HG system</b>	<b>HS system</b>
<b>Stocking rate (cows/ha)</b>	<b>3.1</b>	<b>4.6</b>
Milk yield (kg/cow/day)	17.56	17.23
% Fat	4.35	4.16
% Protein	3.43	3.46
% Lactose	4.68	4.75
Milk solids (kg/cow/day)	1.36	1.31
Supplement (kg/cow/day)		
Concentrate	0	0
Silage	0	0
<b>Cumulative</b>		
Milk yield (kg/cow)	3131	3243
% Fat	4.34	4.30
% Protein	3.39	3.39
% Lactose	4.80	4.82
Milk solids (kg/cow)	241	249
Bodyweight (kg)	489	483
Body Condition Score	2.95	2.99
Supplement (kg/cow)		
Concentrate	338	617
Silage to milking cows (kg DM/cow)	158	188
Maize (kg DM/cow)	0	114
Conserved silage (kg DM/cow)	817	126
Total silage fed ( kg DM/cow)	930	1233

