

Ballyhaise Weekly Farm Notes - Monday 16/8/2010

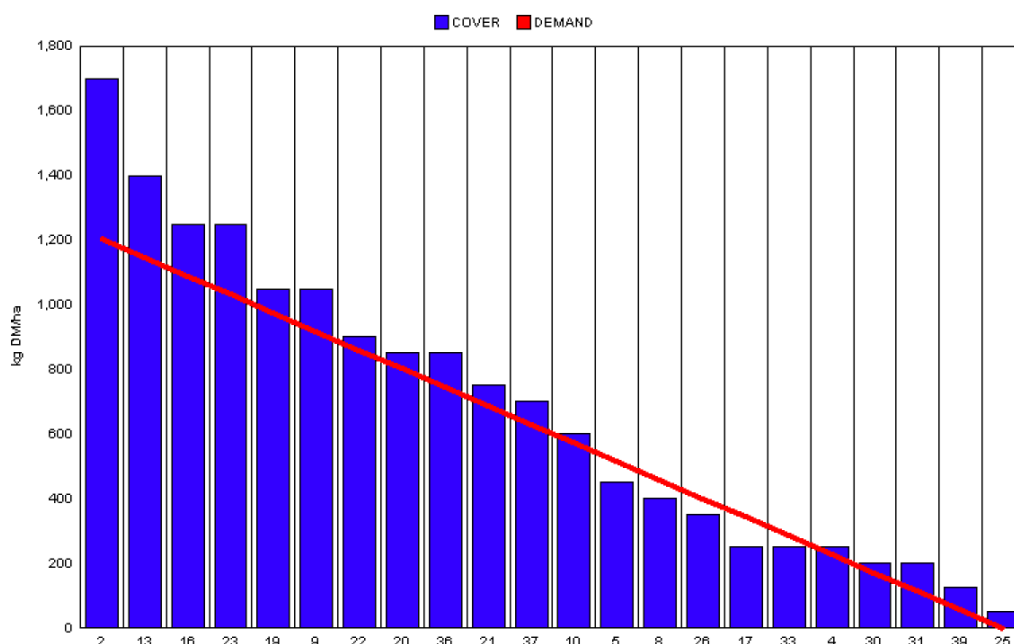
A. Critical Issues

1. Maximise cow intakes of pasture and maintain residual at 3.5cm.
2. Ensure cows are getting better fed each week.
3. Treat high SCC cows and reduce risk of cross infection.

B. On farm situation

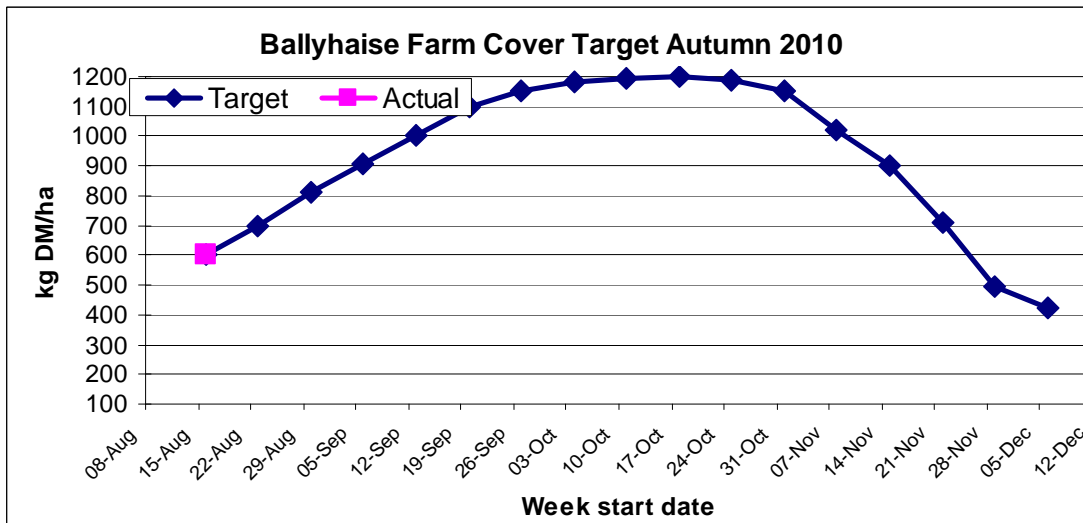
1. Soil temperature today is 14.5°C.
2. Total weekly rainfall is 9.7mm.
3. Average growth was 51kgDM/ha/day, (14% DM).
4. Farm feed wedge (16/8/10).

Moorepark Animal & Grassland Research and Innovation Centre		GrazePlan - Grass Measurement Report	
Group : TEAGASC RESEARCH FARMS		Date Produced 17-AUG-10	
Farm : Ballyhaise Farm		Ballyhaise BMW region systems comparison	
Date : 16-AUG-10		Treatment : 3.1 stocking rate	
Rotation Length :	24	Farm Cover (kg DM/ha) :	604
Grass Allocation /cow (kg grass dry matter/LU	16	Farm Cover (kg DM/LU) :	192
Concentrate Fed (kg/cow) :	0	Current Monthly Fertilizer Rate (kg/ha) :	
Silage Fed (kg DM/cow) :	0	Stock Rate (LU/ha) :	3.14
N Application Rate (units/acre) :		Growth Rate :	51
N Application Rate (kg/ha) :		Farm Demand (kg DM/LU/day) ::	50
Residual Height :	3.5	Target pregrazing yield (kg DM/ha) :	1207
Total Livestock :	63		



5. Growth rate has dropped back this week compared to last week. All surplus paddocks have been baled and all available area is now back in the rotation. This will allow us to build cover from this week on to provide the herd with high quality grass over the autumn. The graph below illustrates the target farm cover for each week of the autumn. Paddock 2 has a higher cover than what is

ideal for grazing but since it is good quality leafy material and growth rate for this week is 20kgDM/ha/day behind the budget it will be grazed.



6. Rotation length is 21 days. This should increase to 30 days by the end of August and should reach a peak of 45 days by the 20th of September.
7. All paddocks that have been grazed this week are getting 27 units of CAN.
8. SCC has increased dramatically this week (357). We have also had an increase in the number of new clinical mastitis cases (3 this week). CMT tested 10 high SCC cows, 6 of these were removed from the herd, treated and milked separately.
9. Cows were tail painted on the 10th of April. Mating start date was the 10th of May for the cows and the 5th of May for the heifers. 24 day submission rate is 90% (57 cows out of 63). Bulls were introduced on week seven of the breeding season and breeding commenced last week (13 weeks). Scanned last week, 68% confirmed in-calf for first 8 week period. This is disappointing considering submission rate was good.
10. Weighed and Dosed heifers for worms last week, average weight 350kg. They will need to 90% of mature weight (500kg) at calving down or 450kg. This means they need to gain 100kgs in 190 days or 0.52kgs /day. This is achievable even though grass quality tends to be a problem on the heifer block as much of the area is too rough to remove surpluses as silage. Heifers also scanned 39 out of 40 in-calf in six week period.
11. Average milk yield is 16.05kg at 3.91% fat and 3.59% protein (1.20kg MS/cow), lactose 4.68%, SCC 357k, TBC 12k.

C. Critical short term actions :

- Monitor residuals closely to ensure cows are being well fed.
- Treat high SCC cows and milk separately.

www.agresearch.teagasc.ie/moorepark/



Dairy Production Research in the Northeast

Objective:

To increase the profitability of milk production per hectare in the BMW region through improved pasture management and utilisation in combination with genetic improvement using the Economic Breeding Index.

Year	2004	2007	2008
Grazing season (days)	226	271	280
Herd EBI (€)	28	51	55
Stocking Rate (Cows/ha)	2.2	2.6	2.9
Concentrate (kg/cow)	700	400	250
Milk (kg/ha)	12,381	11,890	13,340
Milk Solids (kg/ ha)	928	931	1,150
6 week pregnancy rate (%)	38	55	65
Farm Profit (30 ha)	37,417	56,182	-

Week Ending :15/08/10	HG system	HS system
Stocking rate (cows/ha)	3.1	4.6
Milk yield (kg/cow/day)	16.05	14.77
% Fat	3.91	4.12
% Protein	3.59	3.59
% Lactose	4.68	4.67
Milk solids (kg/cow/day)	1.20	1.13
Supplement (kg/cow/day)		
Concentrate	0	0
Silage	0	0
Cumulative		
Milk yield (kg/cow)	3404	3460
% Fat	4.32	4.29
% Protein	3.40	3.40
% Lactose	4.79	4.82
Milk solids kg/cow (kg/ha)	262 (822)	266 (1154)
Bodyweight (kg)	471	481
Body Condition Score	2.95	2.99
Supplement (kg/cow)		
Concentrate	338	617
Silage to milking cows (kg DM/cow)	158	188
Maize (kg DM/cow)	0	114
Conserved silage (kg DM/cow)	817	126
Total silage fed (kg DM/cow)	930	1233

