

## Ballyhaise Weekly Farm Notes - Monday 4/10/2010

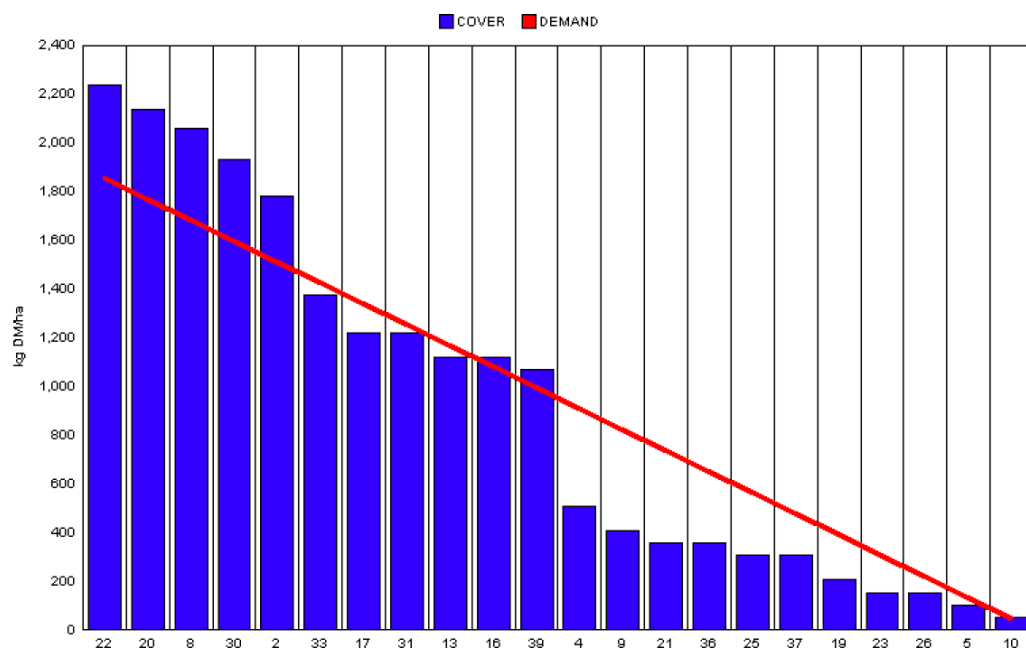
### A. Critical Issues

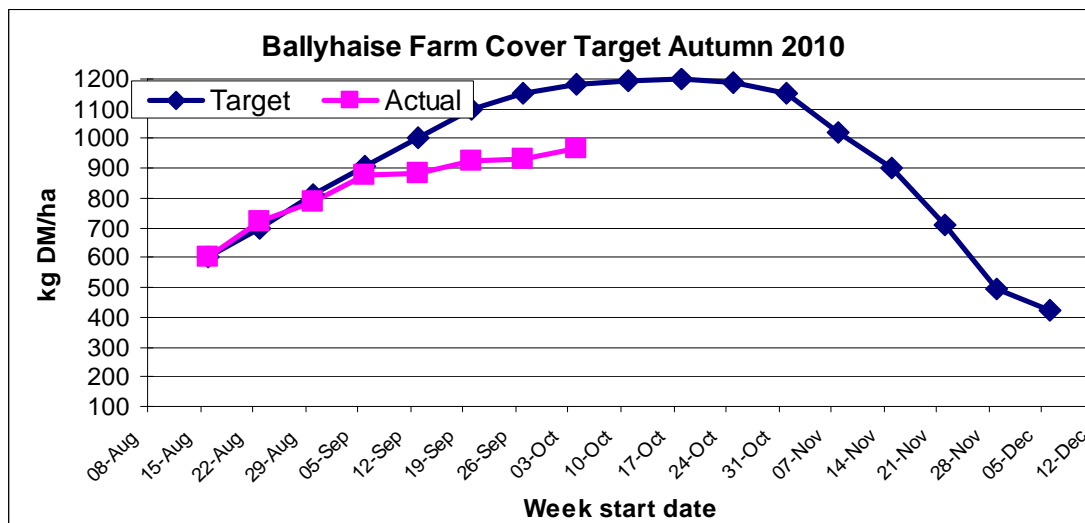
1. Maximise cow intakes of pasture and maintain residual at 3.5cm.
2. Monitor soil conditions to reduce risk of poaching.
3. Treat high SCC cows and reduce risk of cross infection.

### B. On farm situation

1. Soil temperature today is 11°C.
2. Total weekly rainfall is 16.6mm.
3. Average growth was 62kgDM/ha/day, (14% DM).
4. Feeding 3 kg of concentrate.
5. Farm feed wedge (4/10/10).

Moorepark Animal & Grassland Research and Innovation Centre		GrazePlan - Grass Measurement Report	
Group : TEAGASC RESEARCH FARMS		Date Produced 05-OCT-10	
Farm : Ballyhaise Farm	Ballyhaise BMW region systems comparison		
Date : 04-OCT-10	Treatment : 3.1 stocking rate		
Rotation Length :	45	Farm Cover (kg DM/ha) :	964
Grass Allocation /cow (kg grass dry matter/LU)	13	Farm Cover (kg DM/LU) :	312
Concentrate Fed (kg/cow) :	3	Current Monthly Fertilizer Rate (kg/ha) :	
Silage Fed (kg DM/cow) :	0	Stock Rate (LU/ha) :	3.09
N Application Rate (units/acre) :		Growth Rate :	62
N Application Rate (kg/ha) :		Farm Demand (kg DM/LU/day) :	40
Residual Height :	4.2	Target pregrazing yield (kg DM/ha) :	1859
Total Livestock :	62		



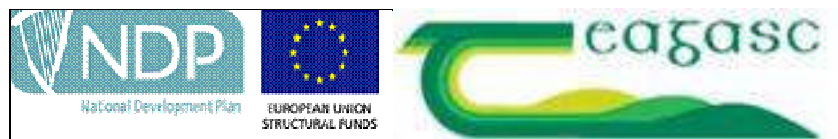


6. Growth rate has remained steady this week at 62kg DM / ha. Soil conditions have improved steadily but the wetter parts of the farm are still quite wet. The heavy covers are on the hills and dryer parts of the farm. Paddock 39 is the only paddock prone to flooding in the top half of the wedge, we will graze it as soon as conditions allow. Grass is being allocated every 12 hours and back fenced where necessary.
7. As can be seen in the graph above we are behind budget. Three kilos of concentrate are being fed to reduce demand to 41kg DM /ha. We will remain at this feeding level for the next number of weeks. If growth rates reduce rapidly we will reduce demand by selling off empty cows early.
8. Rotation length is 45 days. The demand line on the wedge is based on a 45 day rotation.
9. Watery slurry from the lagoon is being spread on grazed paddocks (2000gallons / acre) as weather and soil conditions allow.
10. Cows were tail painted on the 10<sup>th</sup> of April. Mating start date was the 10<sup>th</sup> of May for the cows and the 5<sup>th</sup> of May for the heifers. 24 day submission rate is 90% (57 cows out of 63). Bulls were introduced on week seven of the breeding season and breeding commenced after 13 weeks. Scanned last week, 68% confirmed in-calf for first 8 week period. This is disappointing considering submission rate was good.
11. Average milk yield is 14.57kg at 4.74% fat and 3.79% protein (1.23kg MS/cow), lactose 4.61%, SCC 284k, TBC 22k.

### C. Critical short term actions :

- Monitor residuals closely to ensure cows are being well fed.
- Graze wetter parts of the farm during dry periods even if they are not next on the wedge.
- Treat high SCC cows and milk separately.
- Move heifers and calves to fresh grass every 3-4 days.

[www.agresearch.teagasc.ie/moorepark/](http://www.agresearch.teagasc.ie/moorepark/)



## Dairy Production Research in the Northeast

### Objective:

To increase the profitability of milk production per hectare in the BMW region through improved pasture management and utilisation in combination with genetic improvement using the Economic Breeding Index.

Year	2004	2007	2008
Grazing season (days)	226	271	280
Herd EBI (€)	28	51	55
Stocking Rate (Cows/ha)	2.2	2.6	2.9
Concentrate (kg/cow)	700	400	250
Milk (kg/ha)	12,381	11,890	13,340
Milk Solids (kg/ ha)	928	931	1,150
6 week pregnancy rate (%)	38	55	65
Farm Profit (30 ha)	37,417	56,182	-

<b>Week Ending :04/10/10</b>	<b>HG system</b>	<b>HS system</b>
<b>Stocking rate (cows/ha)</b>	<b>3.1</b>	<b>4.6</b>
Milk yield (kg/cow/day)	14.57	15.33
% Fat	4.74	4.51
% Protein	3.79	3.69
% Lactose	4.61	4.64
Milk solids (kg/cow/day)	1.23	1.25
Supplement (kg/cow/day)		
Concentrate	3	6
Silage	0	0
<b>Cumulative</b>		
Milk yield (kg/cow)	4106	4271
% Fat	4.37	4.31
% Protein	3.46	3.45
% Lactose	4.76	4.78
Milk solids kg/cow (kg/ha)	320 (1004)	331 (1440)
Bodyweight (kg)	504	492
Body Condition Score	2.95	2.92
Supplement (kg/cow)		
Concentrate	476	948
Silage to milking cows (kg DM/cow)	158	188
Maize (kg DM/cow)	0	114
Conserved silage (kg DM/cow)	474	95

