

Ballyhaise Weekly Farm Notes - Monday 11/10/2010

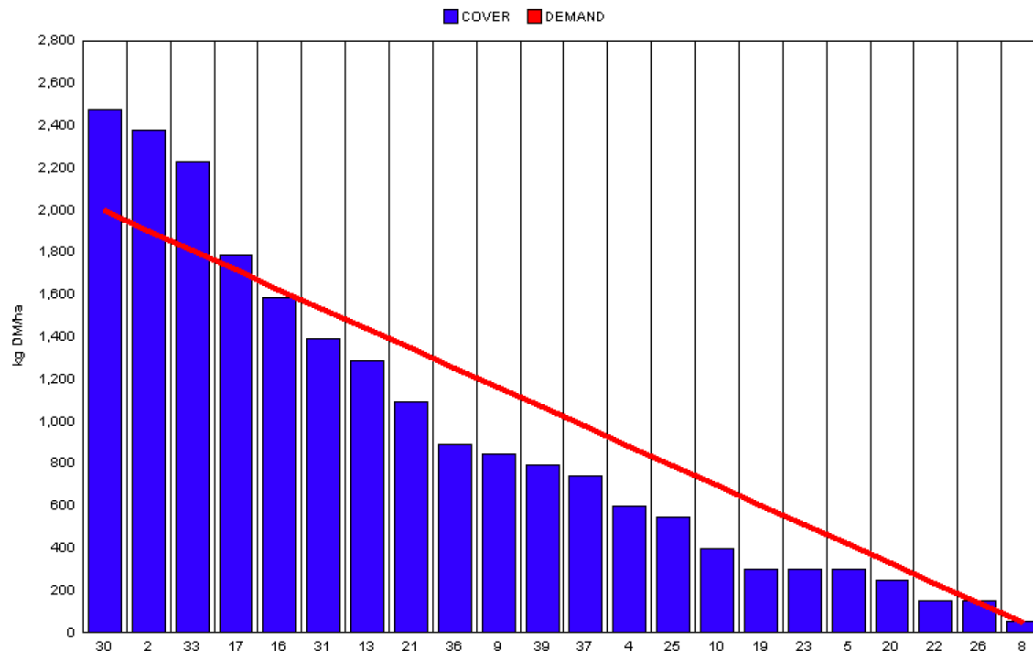
A. Critical Issues

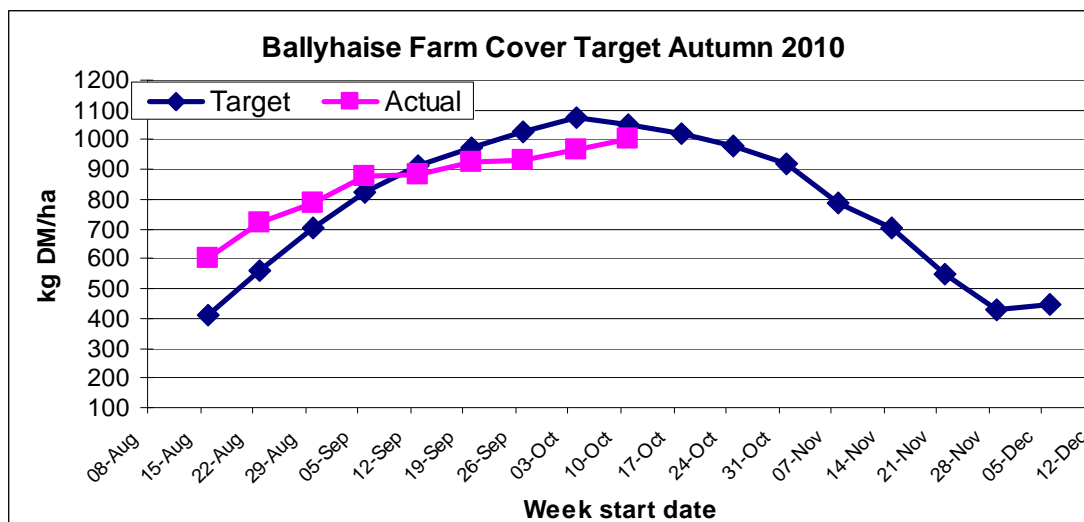
1. Maximise cow intakes of pasture and maintain residual at 3.5cm.
2. Monitor soil conditions to reduce risk of poaching.
3. Treat high SCC cows and reduce risk of cross infection.

B. On farm situation

1. Soil temperature today is 13°C.
2. Total weekly rainfall is 8.4mm.
3. Average growth was 56kgDM/ha/day, (13% DM).
4. Feeding 1 kg of concentrate.
5. Farm feed wedge (11/10/10).

Moorepark Animal & Grassland Research and Innovation Centre		GrazePlan - Grass Measurement Report	
Group : TEAGASC RESEARCH FARMS		Date Produced 12-OCT-10	
Farm : Ballyhaise Farm	Ballyhaise BMW region systems comparison		
Date : 11-OCT-10	Treatment : 3.1 stocking rate		
Rotation Length :	45	Farm Cover (kg DM/ha) :	1003
Grass Allocation /cow (kg grass dry matter/LU)	14	Farm Cover (kg DM/LU) :	325
Concentrate Fed (kg/cow) :	1	Current Monthly Fertilizer Rate (kg/ha) :	
Silage Fed (kg DM/cow) :	0	Stock Rate (LU/ha) :	3.09
N Application Rate (units/acre) :		Growth Rate :	56
N Application Rate (kg/ha) :		Farm Demand (kg DM/LU/day) :	43
Residual Height :	4.2	Target pregrazing yield (kg DM/ha) :	1998
Total Livestock :	62		





6. Growth rate has dropped slightly this week (56kg from 62kg last week). This is still 12 kg DM/ha day ahead of budgeted growth of 44kg. This has resulted in an increase of farm cover and we are now just slightly behind our budget for this week (1003 vs. 1050).
7. Paddocks 39 and 37 are being grazed this week as they are low-lying and wet. They recent dry spell may be our last opportunity to graze these paddocks off before the winter. This has led to pre-grazing yields that are higher than ideal but grass quality is excellent and residuals are being achieved by using 12 hr allocations.
8. Started closing paddocks on the 10th of October. The target is to have 60% of our area grazed by the 10th of November. This means that of the 20.05 ha block 12.03ha will have to be grazed by the 10th of November or 0.43ha / day over the next four weeks.
9. Rotation length is 39 days. The demand line on the wedge is based on a 45 day rotation.
10. Watery slurry from the lagoon is being spread on grazed paddocks (2000gallons / acre) as weather and soil conditions allow.
11. Cows were tail painted on the 10th of April. Mating start date was the 10th of May for the cows and the 5th of May for the heifers. 24 day submission rate is 90% (57 cows out of 63). Bulls were introduced on week seven of the breeding season and breeding commenced after 13 weeks. Scanned last week, 68% confirmed in-calf for first 8 week period. This is disappointing considering submission rate was good.
12. Average milk yield is 13.09kg at 4.76% fat and 4.10% protein (1.15kg MS/cow), lactose 4.54%, SCC 206k, TBC 22k.

C. Critical short term actions :

- Monitor residuals closely to ensure cows are being well fed.
- Graze wetter parts of the farm during dry periods even if they are not next on the wedge.
- Treat high SCC cows and milk separately.
- Move heifers and calves to fresh grass every 3-4 days.

www.agresearch.teagasc.ie/moorepark/



Dairy Production Research in the Northeast

Objective:

To increase the profitability of milk production per hectare in the BMW region through improved pasture management and utilisation in combination with genetic improvement using the Economic Breeding Index.

Year	2004	2007	2008
Grazing season (days)	226	271	280
Herd EBI (€)	28	51	55
Stocking Rate (Cows/ha)	2.2	2.6	2.9
Concentrate (kg/cow)	700	400	250
Milk (kg/ha)	12,381	11,890	13,340
Milk Solids (kg/ ha)	928	931	1,150
6 week pregnancy rate (%)	38	55	65
Farm Profit (30 ha)	37,417	56,182	-

Week Ending :10/10/10	HG system	HS system
Stocking rate (cows/ha)	3.1	4.6
Milk yield (kg/cow/day)	13.09	14.77
% Fat	4.76	4.87
% Protein	4.10	4.04
% Lactose	4.54	4.53
Milk solids (kg/cow/day)	1.15	1.30
Supplement (kg/cow/day)		
Concentrate	3	4
Silage	0	4
Cumulative		
Milk yield (kg/cow)	4204	4374
% Fat	4.37	4.33
% Protein	3.47	3.47
% Lactose	4.76	4.77
Milk solids kg/cow (kg/ha)	329 (1033)	341 (1483)
Bodyweight (kg)	504	492
Body Condition Score	2.95	2.92
Supplement (kg/cow)		
Concentrate	497	990
Silage to milking cows (kg DM/cow)	158	188
Maize (kg DM/cow)	0	114
Conserved silage (kg DM/cow)	474	95