

## Ballyhaise Weekly Farm Notes - Monday 26/10/2010

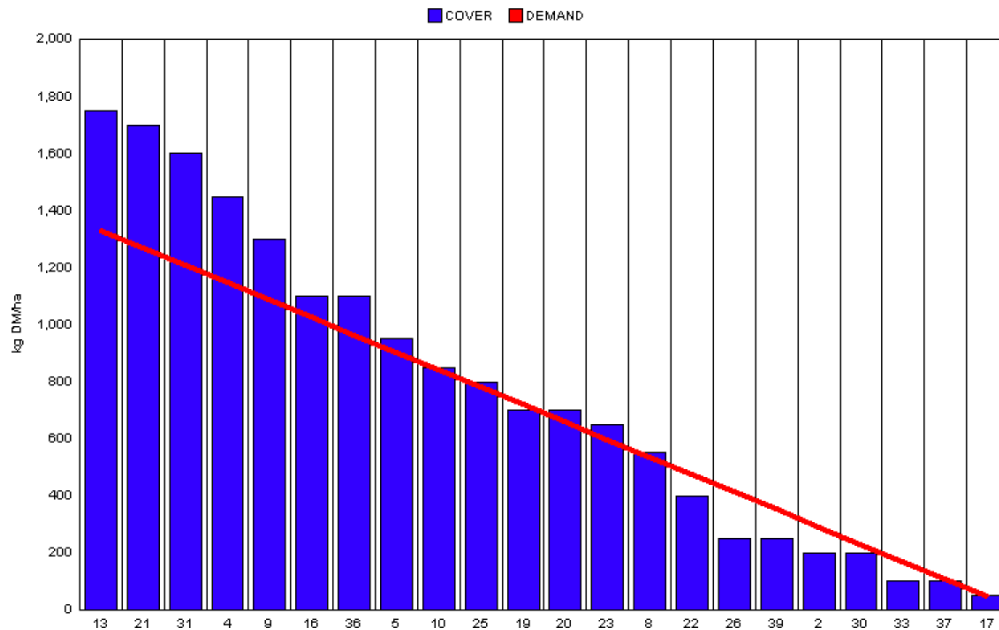
### A. Critical Issues

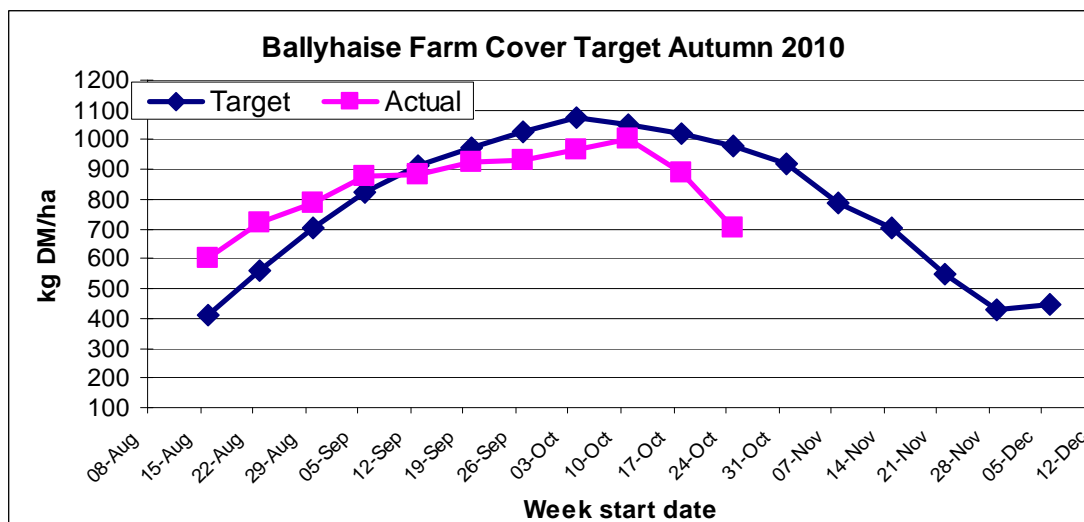
1. Maximise cow intakes of pasture and maintain residual at 3.5cm.
2. Monitor soil conditions to reduce risk of poaching.
3. Treat high SCC cows and reduce risk of cross infection.

### B. On farm situation

1. Average growth was 28kgDM/ha/day, (13% DM).
2. Feeding 4 kg of concentrate.
3. Farm feed wedge (26/10/10).

Moorepark Animal & Grassland Research and Innovation Centre		GrazePlan - Grass Measurement Report	
Group : TEAGASC RESEARCH FARMS		Date Produced 27-OCT-10	
Farm : Ballyhaise Farm		Ballyhaise BMW region systems comparison	
Date : 26-OCT-10		Treatment : 3.1 stocking rate	
Rotation Length :	45	Farm Cover (kg DM/ha) :	704
Grass Allocation /cow (kg grass dry matter/LU)	11	Farm Cover (kg DM/LU) :	271
Concentrate Fed (kg/cow) :	4	Current Monthly Fertilizer Rate (kg/ha) :	
Silage Fed (kg DM/cow) :	0	Stock Rate (LU/ha) :	2.59
N Application Rate (units/acre) :		Growth Rate :	28
N Application Rate (kg/ha) :		Farm Demand (kg DM/LU/day) :	29
Residual Height :	4.2	Target pregrazing yield (kg DM/ha) :	1334
Total Livestock :	52		



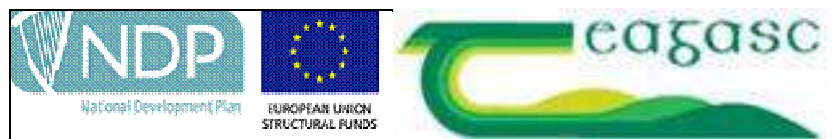


4. Growth rate has dropped significantly over the past two weeks. As can be seen above we are well behind target farm cover. We have sold 4 empty cows last week and another 6 will be sold off this week. We also dried off 4 low yielding heifers. This will reduce the demand to 26kg DM / ha, which will allow us to stretch remaining grass supply until mid November.
5. Cow condition is satisfactory at an average of 2.95. There are 6 cows with condition score of 2.5 or under (10% of the herd). Three of these are calving in late February and will be dried off in mid November in order to be in correct condition score at calving. Two are cull cows and one is not due to calve until late march.
6. Started closing paddocks on the 10<sup>th</sup> of October. The target is to have 60% of our area grazed by the 5<sup>th</sup> of November. This means that of the 20.05 ha block 12.03ha will have to be grazed by the 5<sup>th</sup> of November. There is 42% of the farm closed to date (8.4 ha).
7. Rotation length is 34 days. The demand line on the wedge is based on a 45 day rotation.
8. Cows were tail painted on the 10<sup>th</sup> of April. Mating start date was the 10<sup>th</sup> of May for the cows and the 5<sup>th</sup> of May for the heifers. 24 day submission rate is 90% (57 cows out of 63). Bulls were introduced on week seven of the breeding season and breeding commenced after 13 weeks. Scanned last week, 68% confirmed in-calf for first 8 week period. This is disappointing considering submission rate was good.
9. Average milk yield is 12.19kg at 5.40% fat and 4.27% protein (1.17kg MS/cow), lactose 4.48%, SCC 280k, TBC 22k.

**C. Critical short term actions :**

- Monitor residuals and maintain at 3.5 to 4.0 cm.
- Allocate grass twice daily.
- On-off grazing in wet conditions.

[www.agresearch.teagasc.ie/moorepark/](http://www.agresearch.teagasc.ie/moorepark/)



## Dairy Production Research in the Northeast

### Objective:

To increase the profitability of milk production per hectare in the BMW region through improved pasture management and utilisation in combination with genetic improvement using the Economic Breeding Index.

Year	2004	2007	2008
Grazing season (days)	226	271	280
Herd EBI (€)	28	51	55
Stocking Rate (Cows/ha)	2.2	2.6	2.9
Concentrate (kg/cow)	700	400	250
Milk (kg/ha)	12,381	11,890	13,340
Milk Solids (kg/ ha)	928	931	1,150
6 week pregnancy rate (%)	38	55	65
Farm Profit (30 ha)	37,417	56,182	-

<b>Week Ending :24/10/10</b>	<b>HG system</b>	<b>HS system</b>
<b>Stocking rate (cows/ha)</b>	<b>3.1</b>	<b>4.6</b>
Milk yield (kg/cow/day)	12.19	13.77
% Fat	5.40	4.89
% Protein	4.27	3.99
% Lactose	4.48	4.56
Milk solids (kg/cow/day)	1.17	1.22
Supplement (kg/cow/day)		
Concentrate	4	4
Silage	0	6
<b>Cumulative</b>		
Milk yield (kg/cow)	4360	4505
% Fat	4.39	4.34
% Protein	3.50	3.49
% Lactose	4.75	4.76
Milk solids kg/cow (kg/ha)	343 (1077)	350 (1522)
Bodyweight (kg)	504	492
Body Condition Score	2.95	2.92
Supplement (kg/cow)		
Concentrate	542	1036
Silage to milking cows (kg DM/cow)	158	272
Maize (kg DM/cow)	0	114
Conserved silage (kg DM/cow)	474	95