

## Ballyhaise Weekly Farm Notes - Monday 1/11/2010

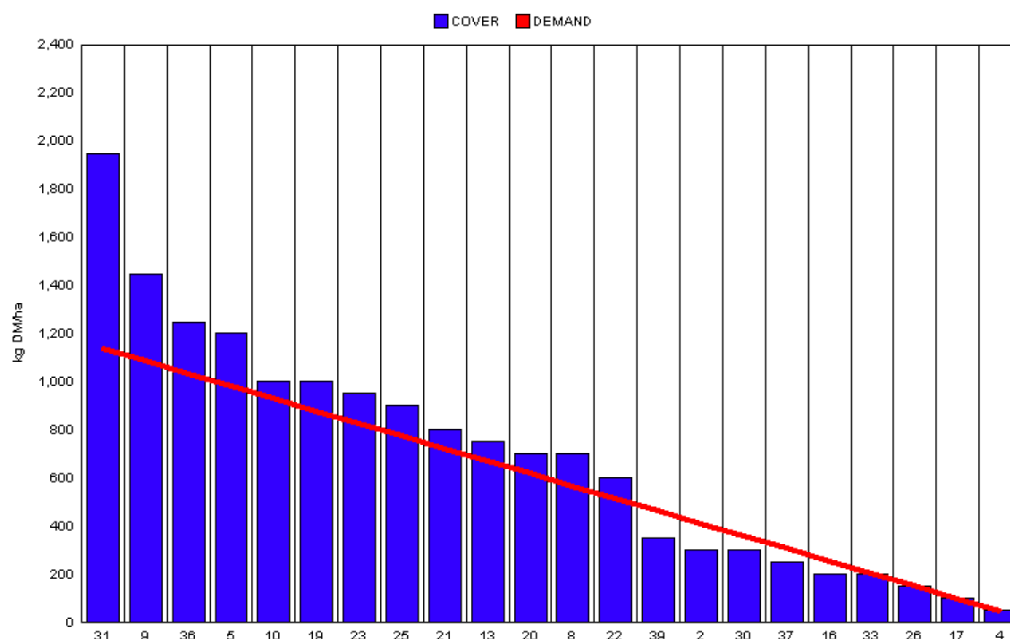
### A. Critical Issues

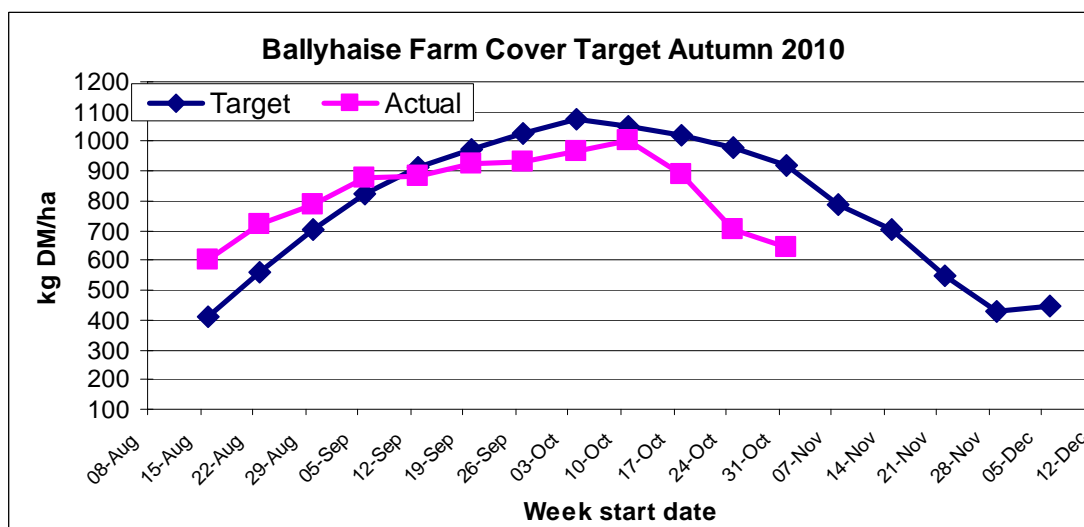
1. Maximise cow intakes of pasture and maintain residual at 3.5cm.
2. Monitor soil conditions to reduce risk of poaching.
3. Treat high SCC cows and reduce risk of cross infection.

### B. On farm situation

1. Average growth was 28kgDM/ha/day, (13% DM).
2. Total rainfall for the last 7 days was 32mm.
3. Average soil temperature is 10°C.
4. Feeding 3 kg of concentrate.
5. Farm feed wedge (1/11/10).

Moorepark Animal & Grassland Research and Innovation Centre		GrazePlan - Grass Measurement Report	
Group : TEAGASC RESEARCH FARMS		Date Produced 02-NOV-10	
Farm : Ballyhaise Farm	Ballyhaise BMW region systems comparison		
Date : 01-NOV-10	Treatment : 3.1 stocking rate		
Rotation Length :	38	Farm Cover (kg DM/ha) :	645
Grass Allocation /cow (kg grass dry matter/LU)	12	Farm Cover (kg DM/LU) :	269
Concentrate Fed (kg/cow) :	3	Current Monthly Fertilizer Rate (kg/ha) :	
Silage Fed (kg DM/cow) :	0	Stock Rate (LU/ha) :	2.39
N Application Rate (units/acre) :		Growth Rate :	28
N Application Rate (kg/ha) :		Farm Demand (kg DM/LU/day) :	29
Residual Height :	4.2	Target pregrazing yield (kg DM/ha) :	1142
Total Livestock :	48		





6. Growth rate has remained steady at 28kg DM / ha /day. Six more cull cows have been sold and two cows giving less than 8 litres have been dried off. This reduces the stocking rate to 2.39 cows / ha. This will allow us to stretch out remaining grass supplies until mid November.
7. Cow condition is satisfactory at an average of 2.94. There are 6 cows with condition score of 2.5 or under (10% of the herd). Three of these are calving in late February and will be dried off in mid November in order to be in correct condition score at calving. Two are cull cows and one is not due to calve until late march.
8. Started closing paddocks on the 10<sup>th</sup> of October. The target is to have 60% of our area grazed by the 5<sup>th</sup> of November. There is 61% of the area closed on the 1<sup>st</sup> of November.
9. Rotation length is 38 days. The demand line on the wedge is based on a 38 day rotation.
10. Cows were tail painted on the 10<sup>th</sup> of April. Mating start date was the 10<sup>th</sup> of May for the cows and the 5<sup>th</sup> of May for the heifers. 24 day submission rate is 90% (57 cows out of 63). Bulls were introduced on week seven of the breeding season and breeding commenced after 13 weeks. The final empty rate was 19% after 13 weeks.
11. Average milk yield is 13.83kg at 4.73% fat and 4.24% protein (1.23kg MS/cow), lactose 4.48%, SCC 275k, TBC 11k.

**C. Critical short term actions :**

- Monitor residuals and maintain at 3.5 to 4.0 cm.
- Allocate grass twice daily.
- On-off grazing in wet conditions.

[www.agresearch.teagasc.ie/moorepark/](http://www.agresearch.teagasc.ie/moorepark/)



## Dairy Production Research in the Northeast

### Objective:

To increase the profitability of milk production per hectare in the BMW region through improved pasture management and utilisation in combination with genetic improvement using the Economic Breeding Index.

Year	2004	2007	2008
Grazing season (days)	226	271	280
Herd EBI (€)	28	51	55
Stocking Rate (Cows/ha)	2.2	2.6	2.9
Concentrate (kg/cow)	700	400	250
Milk (kg/ha)	12,381	11,890	13,340
Milk Solids (kg/ ha)	928	931	1,150
6 week pregnancy rate (%)	38	55	65
Farm Profit (30 ha)	37,417	56,182	-

<b>Week Ending :31/10/10</b>	<b>HG system</b>	<b>HS system</b>
<b>Stocking rate (cows/ha)</b>	<b>3.1</b>	<b>4.6</b>
Milk yield (kg/cow/day)	13.83	14.60
% Fat	4.73	5.02
% Protein	4.24	4.08
% Lactose	4.65	4.64
Milk solids (kg/cow/day)	1.23	1.32
Supplement (kg/cow/day)		
Concentrate	4	4
Silage	0	6
<b>Cumulative</b>		
Milk yield (kg/cow)	4478	4592
% Fat	4.58	4.35
% Protein	3.57	3.50
% Lactose	4.76	4.82
Milk solids kg/cow (kg/ha)	365 (1146)	360 (1567)
Bodyweight (kg)	504	492
Body Condition Score	2.94	3.04
Supplement (kg/cow)		
Concentrate	565	1084
Silage to milking cows (kg DM/cow)	158	306
Maize (kg DM/cow)	0	114
Conserved silage (kg DM/cow)	474	95