

Ballyhaise Weekly Farm Notes - Monday 16/07/2011

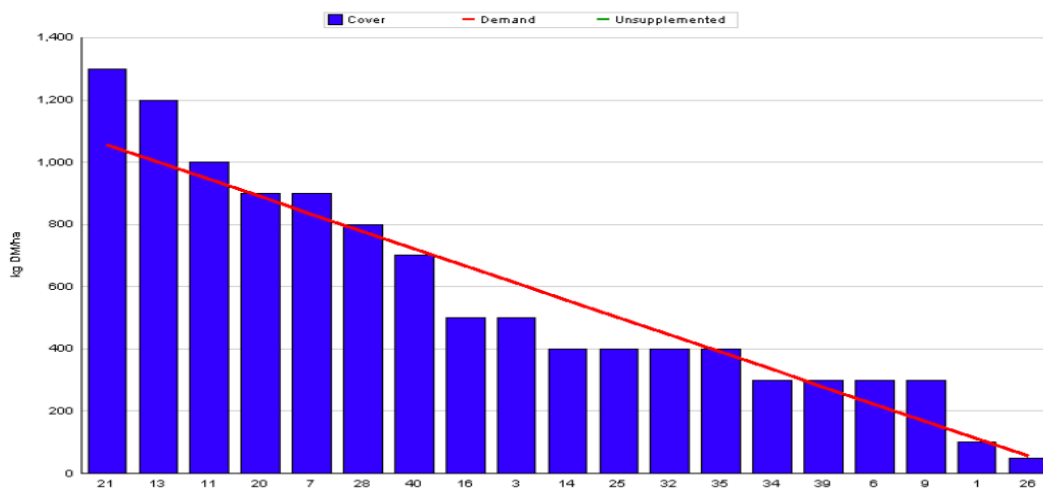
A. Critical Issues

1. Protect soil from poaching.
2. Maintain cow condition.
3. Monitor bull activity.

B. On farm situation

1. Soil temperature today is 15°C.
2. Total weekly rainfall is 11mm.
3. Average growth was 70kgDM/ha/day, (16% DM).
4. Feeding 0.5kg of concentrate.
5. Farm feed wedge (13/07/12).

Moorepark Animal & Grassland Research and Innovation Centre		GrazePlan - Grass Measurement Report	
Group :	TEAGASC RESEARCH FARMS	Date Produced	18-JUL-12
Farm :	Ballyhaise Farm	Ballyhaise calving date and genotype study 2012	
Date :	13-JUL-12	Treatment :	Holstien Fresian
Rotation Length :	21	Grass Allocation /LU (kg DM/LU) :	16
Number of Cows :	60	Farm Cover (kg DM/ha) :	520
Grass Allocation /cow (kg grass dry matter/LU)	16	Farm Cover (kg DM/LU) :	166
Concentrate Fed (kg/cow) :	1	Stocking Rate (LU/ha) :	3.14
Silage Fed (kg DM/cow) :	0	Growth Rate :	54
N Application Rate (units/acre) :		Farm Demand (kg DM/ha/day) :	50
N Application Rate (kg/ha) :		Target pregrazing yield (kg DM/ha) :	1055
Residual Height :	4		
Total Livestock (LU) :	60		



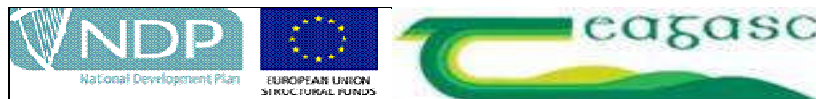
6. Average growth rate is higher than last week at 70kg DM / ha. All area is back in the grazing round so demand is 50 kg DM / ha. We walked the farm last Friday and picked out 8 paddocks which will need to be baled over the next few weeks to improve grass quality. Four of these were baled on Sunday, the average cover on these paddocks was 1200kg DM / ha, which is a light cover for baling (2 bales per acre) but our main focus now is to improve grass quality before we start building autumn covers. An added benefit to this approach is that re-growths will be fast on these paddocks

7. Farm cover is 520 kg Dm / ha (166 kg DM / LU), and cows are grazing covers of 1300kg DM / ha.
8. A fresh break of grass is allocated after each milking to protect paddocks from poaching. Ground conditions are holding up well with no poaching being done.
9. The cows are grazing 3.2 ha of reseeded grass this week that has a cover of 800 kg DM / ha. They are grazing this by day so that if conditions get wet they can be taken off and they get a fresh break of higher covers at night.
10. It has been easier to get to target residual this week. Average is 4.2cm.
11. Paddocks 40 and 41 were reseeded on the 28th of May, paddock 41 was sowed with Aston energy and paddock 40 was sowed with Aberchoice.
12. Herd condition scored last Friday. Herd average was 2.88 with 49% of the herd BCS 3 or higher.
13. All 41 replacement heifer calves weaned. Calves are moved to fresh grass weekly. Feeding 1kg of meal per calf.
14. Bulling heifers were dosed last week for fluke and worms. All heifers got one round of AI and 6 weeks with the stock bull. Grass quality is very poor, took out one paddock this week, ground conditions are too wet to take out more. Will weigh heifers and calves next week.
15. Production per cow this week was 19.13kg at 4.16% fat and 3.50% protein (1.45kg MS/cow), lactose 4.86%, SCC 138k, TBC 8k.

C. Critical short term actions :

- Allocating grass in 12 hr blocks.
- On-off grazing when necessary.
- Close observation of Bull activity.
- Fresh grass to calves weekly.

www.agresearch.teagasc.ie/moorepark/



The herd has been split into two distinct breed groups since May 2012.

Genetics 2012	Fr	Crossbred
EBI	142	148
Milk sub index	46	46
Fertility sub index	90	91
Milk kg	72	-26
Fat Kg	10	9
Fat %	0.14	0.2
Prot Kg	7	5.5
Prot %	0.09	0.13
Age profile (lactations)	3	2.7
Week:18/07/12	Fr	Crossbred
Stocking rate (cows/ha)	2.9	3.15
Milk yield (kg/cow/day)	19.63	18.63
% Fat	4.04	4.28
% Protein	3.42	3.57
% Lactose	4.77	4.87
Milk solids (kg/cow/day)	1.45	1.45
Supplement (kg/cow/day)		
Concentrate	0.5	0.5
Silage	0	0
Cumulative		
Milk yield (kg/cow)	2916	2818
% Fat	4.45	4.57
% Protein	3.46	3.53
% Lactose	4.80	4.85
Milk solids (kg/cow)	230	227
Body Condition Score	2.87	2.88
Supplement (kg/cow)		
Concentrate	347	350
Silage to milking cows (kg DM/cow)	220	210
Conserved silage (kg DM/cow)	130	140
Sires	RUU, HZO, UYC TZD, CWJ, SBH	WAS, CJY, GHK KLK, ULK

* These are raw data and have not been statistically analysed.