

## Ballyhaise Weekly Farm Notes - Monday 13/08/2012

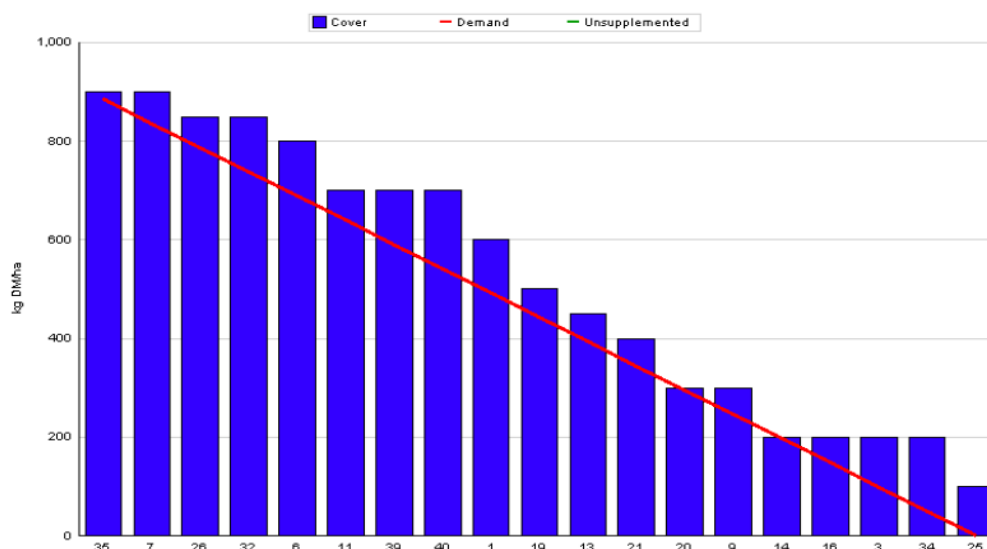
### A. Critical Issues

1. Protect soil from poaching.
2. Feed supplements to increase grass cover.
3. Maintain cow condition.

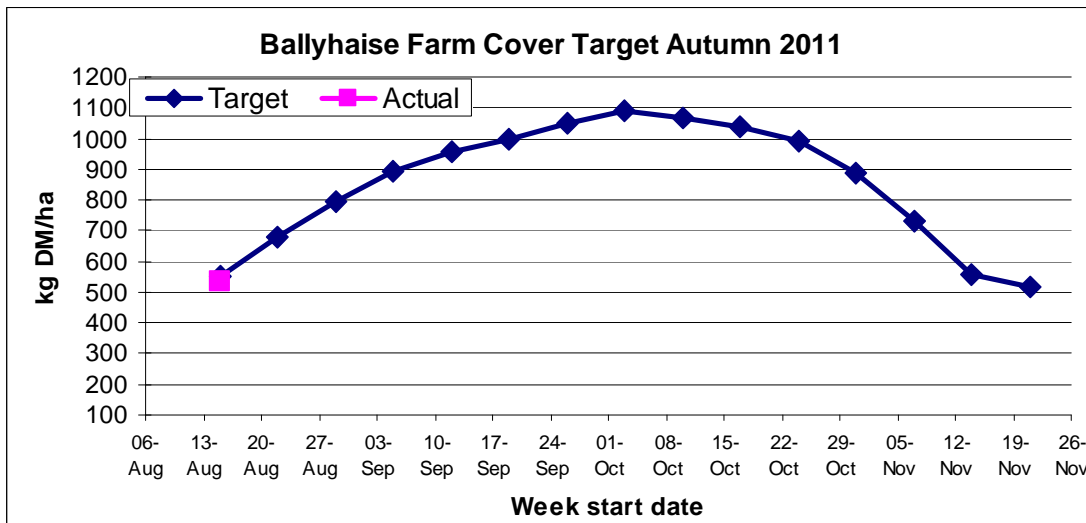
### B. On farm situation

1. Soil temperature today is 16.7°C.
2. Total weekly rainfall is 30mm.
3. Average growth was 53kgDM/ha/day, (12% DM).
4. Feeding 3kg of concentrate and 3kg of bale silage.
5. Farm feed wedge (13/08/12).

Moorepark Animal & Grassland Research and Innovation Centre		GrazePlan - Grass Measurement Report		
Group :	TEAGASC RESEARCH FARMS	Date Produced 14-AUG-12		
Farm :	Ballyhaise Farm	Ballyhaise calving date and genotype study 2012		
Date :	13-AUG-12	Treatment :	Holstien Fresian	
Number of Cows :		60	Grass Allocation /LU (kg DM/LU) :	11
Grass Allocation /cow (kg grass dry matter/LU)		11	Farm Cover (kg DM/ha) :	536
Concentrate Fed (kg/cow) :		3	Farm Cover (kg DM/LU) :	160
Silage Fed (kg DM/cow) :		3	Stocking Rate (LU/ha) :	3.35
N Application Rate (units/acre) :			Growth Rate :	53
N Application Rate (kg/ha) :			Farm Demand (kg DM/ha/day) :	37
Residual Height :		4	Target pregrazing yield (kg DM/ha) :	885
Total Livestock (LU) :		60		



## 6. Autumn Budget



7. The graph above shows the target farm cover for each week over the autumn period. The target is to reach a peak average farm cover of 1100 kg DM / ha on the first week of October. The target closing cover is 500 kg DM / ha.
8. Weather conditions towards the end of last week were greatly improved and ground was beginning to dry out but heavy rain over the weekend has caused soils to become saturated again. Grazing conditions are difficult with the wetter parts of the farm too wet to graze. This saturated soil is also affecting growth rates.
9. Farm cover is 536 kg Dm / ha (160 kg DM / LU), and cows are grazing covers of 900kg DM / ha. This is too low so bale silage is being fed to reduce demand. Growth rate is 53 kg DM / ha and with silage being fed demand is 37kg DM / ha. The target farm cover for next week is 670 kg DM / ha, to reach this cover at current growth rates 3kg of concentrate and 3kg of silage will have to be fed.
10. A fresh break of grass is allocated after each milking to protect paddocks from poaching. Day allocations are smaller to allow for silage feeding.
11. Cows grazed to an average residual of 4.3cm this week, this has risen over the last few days due to wet conditions.
12. Spreading 30 units of Urea nitrogen on grazed paddocks weekly. It has been difficult to get opportunities to spread and some of the paddocks look deficient and yellow. The plan is to do a bulk spread of 35 units of Urea next week.
13. Heifer calves have been grazing reseeded paddocks over the last 3 weeks; they will be dosed and moved off the milking platform this week to reduce demand.
14. There have been no clinical cases of mastitis since June 14<sup>th</sup> but SCC has risen to 206,000 over the last two lifts. There are three cows which were persistently

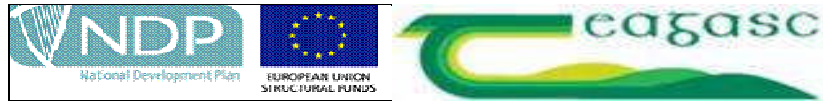
high and have been treated, we will CMT them this week and dry off quarters if necessary.

15. Production per cow this week was 16.45kg at 4.44% fat and 3.50% protein (1.29 kg MS/cow), lactose 4.68%, SCC 206k, TBC 28k.

**C. Critical short term actions :**

- Allocating grass in 12 hr blocks.
- Feeding concentrate and bale silage.
- Fresh grass to calves twice weekly.
- Feeding smaller calves separately.

[www.agresearch.teagasc.ie/moorepark/](http://www.agresearch.teagasc.ie/moorepark/)



The herd is split on the bases of cow breed with 60 pure Friesian cows in one group and 56 crossbred cows in the other group.

<b>Genetics 2012</b>	<b>Fr</b>	<b>Crossbred</b>
<b>EBI</b>	<b>142</b>	<b>148</b>
Milk sub index	46	46
Fertility sub index	90	91
Milk kg	72	-26
Fat Kg	10	9
Fat %	0.14	0.2
Prot Kg	7	5.5
Prot %	0.09	0.13
Age profile ( lactations)	3	2.7
<b>Week:05/08/12</b>	<b>Fr</b>	<b>Crossbred</b>
<b>Stocking rate (cows/ha)</b>	<b>2.9</b>	<b>3.15</b>
Milk yield (kg/cow/day)	16.78	16.08
% Fat	4.32	4.59
% Protein	3.40	3.62
% Lactose	4.67	4.70
Milk solids (kg/cow/day)	1.28	1.31
Supplement (kg/cow/day)		
Concentrate	3	3
Silage	1	1
<b>Cumulative</b>		
Milk yield (kg/cow)	3414	3300
% Fat	4.42	4.58
% Protein	3.45	3.45
% Lactose	4.82	4.87
Milk solids (kg/cow)	268	267
SCC	135,000	111,000
Body Condition Score	2.87	2.88
Supplement (kg/cow)		
Concentrate	470	488
Silage to milking cows (kg DM/cow)	220	210
Conserved silage (kg DM/cow)	130	140
Sires	RUU, HZO, UYC TZD, CWJ, SBH	WAS, CJY, GHK KLK, ULK

\* These are raw data and have not been statistically analysed.