

Ballyhaise Weekly Farm Notes - Monday 20/08/2012

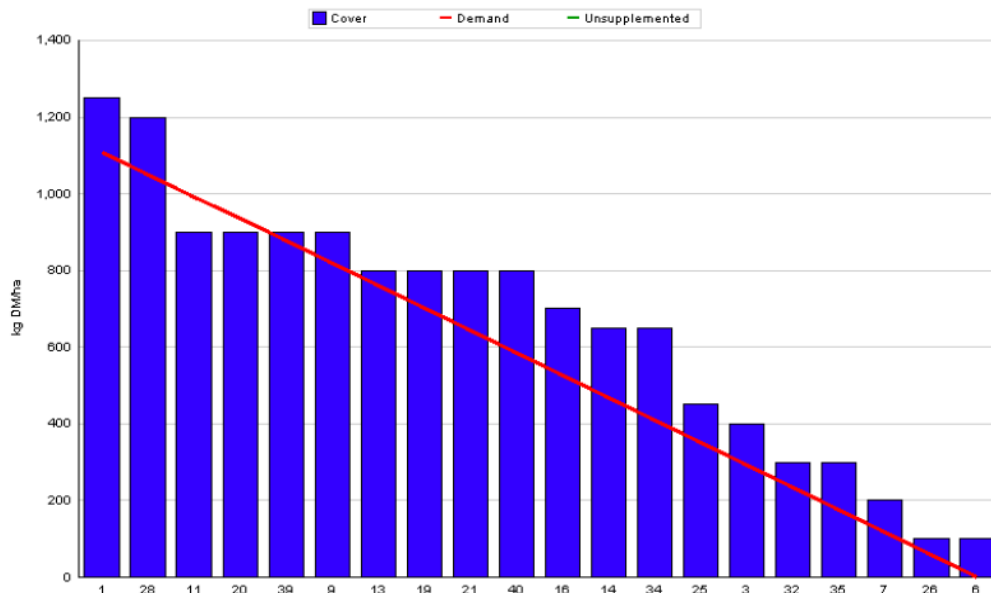
A. Critical Issues

1. Protect soil from poaching.
2. Feed supplements to increase grass cover.
3. Maintain cow condition.

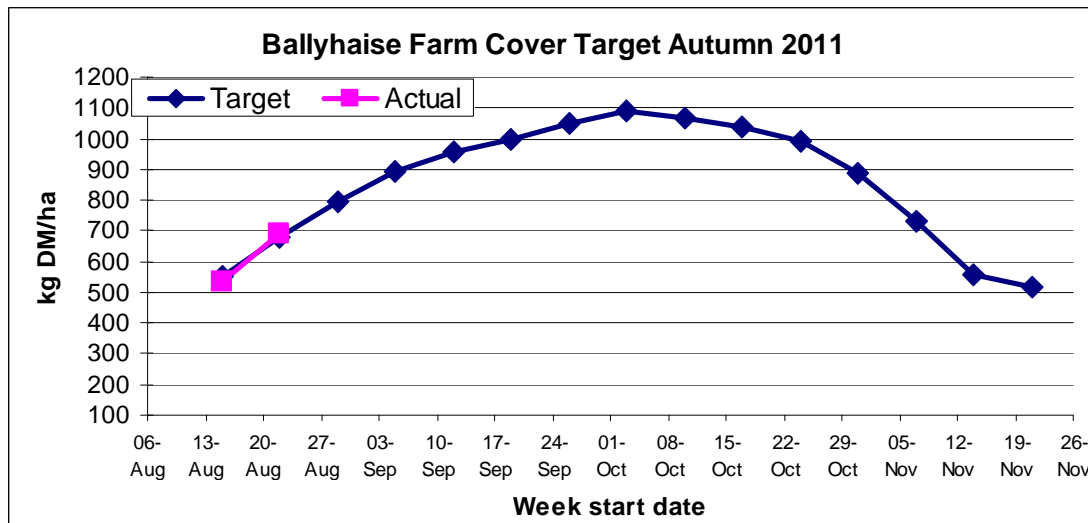
B. On farm situation

1. Soil temperature today is 16°C.
2. Total weekly rainfall is 38mm.
3. Average growth was 58kgDM/ha/day, (16% DM).
4. Feeding 4kg of concentrate.
5. Farm feed wedge (19/08/12).

Moorepark Animal & Grassland Research and Innovation Centre		GrazePlan - Grass Measurement Report	
Group : TEAGASC RESEARCH FARMS	Ballyhaise calving date and genotype study 2012		Date Produced 22-AUG-12
Farm : Ballyhaise Farm			
Date : 20-AUG-12	Treatment :	Holstien Fresian	
Rotation Length :	27	Grass Allocation /LU (kg DM/LU) :	13
Number of Cows :	60	Farm Cover (kg DM/ha) :	690
Grass Allocation /cow (kg grass dry matter/LU)	13	Farm Cover (kg DM/LU) :	218
Concentrate Fed (kg/cow) :	4	Stocking Rate (LU/ha) :	3.16
Silage Fed (kg DM/cow) :	0	Growth Rate :	58
N Application Rate (units/acre) :		Farm Demand (kg DM/ha/day) :	41
N Application Rate (kg/ha) :		Target pregrazing yield (kg DM/ha) :	1109
Residual Height :	4		
Total Livestock (LU) :	60		



6. Autumn Budget



7. The graph above shows the target farm cover for each week over the autumn period. The target is to reach a peak average farm cover of 1100 kg DM / ha on the first week of October. The target closing cover is 500 kg DM / ha.
8. Farm cover is 690 kg Dm / ha (218 kg DM / LU), and cows are grazing covers of 1200kg DM / ha. Farm cover is on target for this week and with growth rates improved we have removed the bale silage from the diet. Grazing conditions have improved and we were able to graze some of the wetter paddocks and reseeded paddocks. We are still feeding 4kg of concentrate to help build farm cover to 790 kg DM / ha by next week.
9. Will Scan cows next week to identify empty cows, these animals will probably need to be sold off early to reduce grass demand. We will not carry over these animals as winter feed supplies will be tight. Most of the good quality bale silage has been fed over the summer and remaining bales are moderate or poor quality.
10. Still allocating grass every 12 hours to maintain better graze out when supplement feeds are being fed.
11. Cows grazed to an average residual of 4.1cm this week which is on target.
12. There were 35 units of N spread on 60% of the area over the past week to help build autumn grass.
13. Heifer calves were weighed, dosed and moved off the milking platform last Friday. There are two groups of calves which were batched on weight. The big batch (25 calves) averaged 158kg and gained 0.73 kg per day over the last month. The smaller batch (15 calves) averaged 130kg and gained 1.02kg per

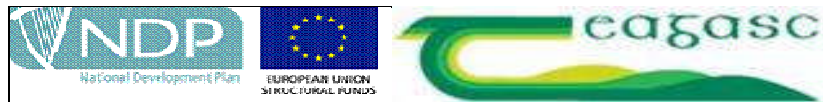
day. The target is to have these calves at 150kg at 6 months old. There are 10 calves below this target and will need to continue to gain 1 kg per day over the next 3 months to catch up.

14. There have been no clinical cases of mastitis since June 14th but SCC has remained higher than we would like at 206,000.
15. Production per cow this week was 15.4kg at 4.54% fat and 3.38% protein (1.22 kg MS/cow), lactose 4.66%, SCC 206k, TBC 12k.

C. Critical short term actions :

- Allocating grass in 12 hr blocks.
- Feeding concentrate.
- Fresh grass to calves twice weekly.
- Feeding smaller calves separately.

www.agresearch.teagasc.ie/moorepark/



The herd is split on the bases of cow breed with 60 pure Friesian cows in one group and 56 crossbred cows in the other group.

Genetics 2012	Fr	Crossbred
EBI	142	148
Milk sub index	46	46
Fertility sub index	90	91
Milk kg	72	-26
Fat Kg	10	9
Fat %	0.14	0.2
Prot Kg	7	5.5
Prot %	0.09	0.13
Age profile (lactations)	3	2.7
Week:19/08/12	Fr	Crossbred
Stocking rate (cows/ha)	2.9	3.15
Milk yield (kg/cow/day)	15.58	15.50
% Fat	4.32	4.57
% Protein	3.40	3.61
% Lactose	4.67	4.70
Milk solids (kg/cow/day)	1.19	1.26
Supplement (kg/cow/day)		
Concentrate	3	3
Silage	5	5
Cumulative		
Milk yield (kg/cow)	3524	3432
% Fat	4.42	4.56
% Protein	3.44	3.45
% Lactose	4.82	4.86
Milk solids (kg/cow)	276	277
SCC	135,000	111,000
Body Condition Score	2.87	2.88
Supplement (kg/cow)		
Concentrate	492	498
Silage to milking cows (kg DM/cow)	255	250
Conserved silage (kg DM/cow)	130	140
Sires	RUU, HZO, UYC TZD, CWJ, SBH	WAS, CJY, GHK KLK, ULK

* These are raw data and have not been statistically analysed.