

Ballyhaise Weekly Farm Notes - Monday 25/09/2012

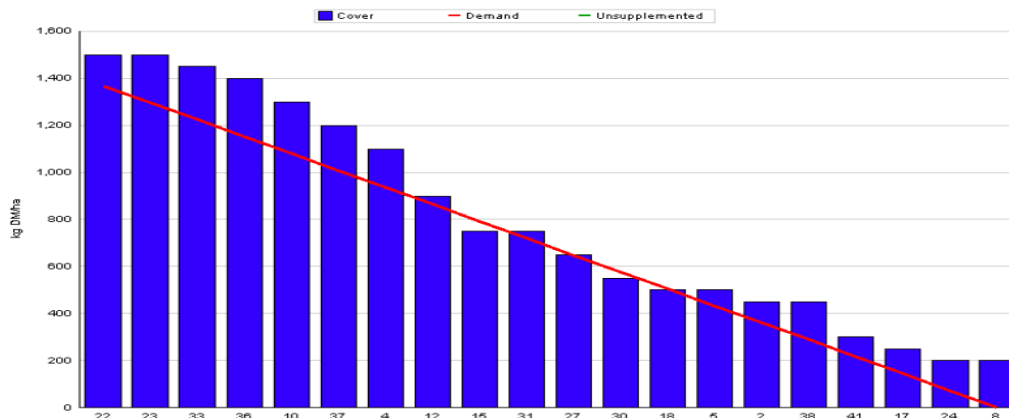
A. Critical Issues

1. Feed supplements to increase grass cover.
2. Maintain cow condition.
3. Keep young stock moved regularly.

B. On farm situation

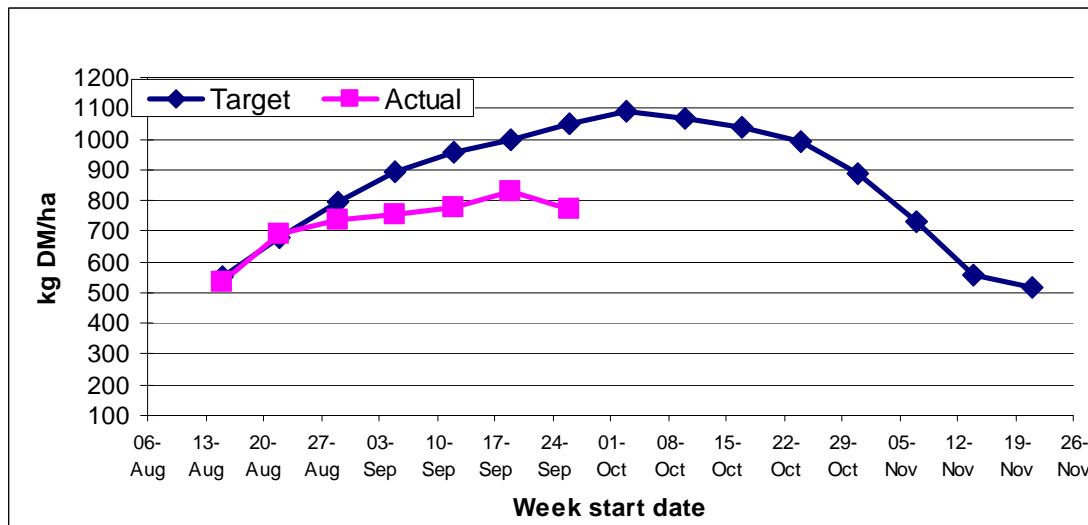
1. Soil temperature today is 11.5°C.
2. Total rainfall over the past seven days was 25mm.
3. Average growth was 36kgDM/ha/day, (12% DM).
4. Feeding 3kg of concentrate and 3kg DM of bale silage.
5. Farm feed wedge (24/09/12).

Moorepark Animal & Grassland Research and Innovation Centre		GrazePlan - Grass Measurement Report	
Group :	TEAGASC RESEARCH FARMS	Date Produced	25-SEP-12
Farm :	Ballyhaise Farm	Ballyhaise calving date and genotype study 2012	
Date :	24-SEP-12	Treatment :	Jersey Fresian crossbred
Rotation Length :	40	Grass Allocation /LU (kg DM/LU) :	11
Number of Cows :	56	Farm Cover (kg DM/ha) :	772
Grass Allocation /cow (kg grass dry matter/LU)	11	Farm Cover (kg DM/LU) :	248
Concentrate Fed (kg/cow) :	3		
Silage Fed (kg DM/cow) :	2		
N Application Rate (units/acre) :		Stocking Rate (LU/ha) :	3.11
N Application Rate (kg/ha) :		Growth Rate :	35
Residual Height :	4	Farm Demand (kg DM/ha/day) :	34
Total Livestock (LU) :	56	Target pregrazing yield (kg DM/ha) :	1367



6. Farm cover is 772 kg Dm / ha (248 kg DM / LU), and cows are grazing covers of 1500kg DM / ha. Farm cover is well below target for this week so 3kg of concentrate and 3kg Dm of silage are being fed to slow down rotation
7. Grazing conditions have been poor this week with very heavy rain over the past 3 days. We have been using on-off grazing to minimise poaching damage during wet periods. Wet conditions have also led to a drop in soil temperature to 11.5° which is having a negative impact on growth rates.

8. Autumn Budget



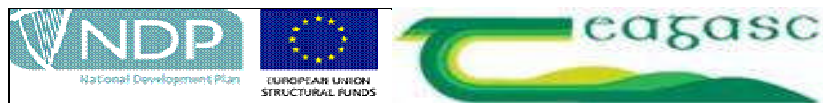
9. The graph above shows the target farm cover for each week over the autumn period. The target is to reach a peak average farm cover of 1100 kg DM / ha on the first week of October. The target closing cover is 500 kg DM / ha.
10. Will start to close paddocks next week on the fifth of October. Because farm cover is well behind target silage may have to be fed to extend the final rotation. Also cull cows are being sold this week to reduce demand.
11. Grass is being allocated in 12 hour blocks to help maintain a good grazing residual. The average residual on the paddocks grazed this week was 4.1 cm.
12. In-calf heifers were weighed in mid September; they averaged 381kg which is on target. These are predominantly jersey crossbred animals with a mature live weight of 500kg. There are 4 very small heifers that are below 360kg. Heifer calves will be weighed and dosed this week.
13. Out-wintering pad has been re-chipped in preparation for winter. Four loads of chip were used costing €725 per load. Lagoon is empty but there is still some slurry in cubicle shed that will have to be spread when ground conditions improve.
14. There were 18 cows hoof paired this week to try and prevent lameness issues later in the autumn. The majority just needed routine trimming; none needed shoes. Cows were foot bathed with copper sulphate.
15. Full herd scan was done on the 30th of August. There were 8 cows empty out of 114 cows milking (7%) over a 13 week breeding season. The six week in-calf rate was 71% (81 cows); these are due to calve before the 22nd of March next year. There was one heifer empty out of 35 (3%) over a seven week breeding period. There are 25 heifers in-calf to first service (71%) and the rest were served with the stock bull. This is a total of 140 cows and heifers scanned in calf for next spring which will give us scope to do some voluntary culling.

16. Production per cow this week was 13.07kg at 5.17% fat and 3.94% protein (1.18 kg MS/cow), lactose 4.37%, SCC 220k, TBC 5k.

C. Critical short term actions :

- Allocating grass in 12 hr blocks.
- Feeding concentrate and silage.
- Dose and move calves.

www.agresearch.teagasc.ie/moorepark/



The herd is split on the bases of cow breed with 60 pure Friesian cows in one group and 56 crossbred cows in the other group.

Genetics 2012	Fr	Crossbred
EBI	142	148
Milk sub index	46	46
Fertility sub index	90	91
Milk kg	72	-26
Fat Kg	10	9
Fat %	0.14	0.2
Prot Kg	7	5.5
Prot %	0.09	0.13
Age profile (lactations)	3	2.7

Fertility 2012	Fr	Crossbred
EBI	142	148
Fertility sub index	90	91
24 day Submission rate (%)	90	91
Pregnancy rate to 1 st service (%)	48	56
42 day in-calf rate (%)	73	69
Straws per cow	1.75	1.74
13 week empty rate (%)	5	7

Week:25/09/12	Fr	Crossbred
Stocking rate (cows/ha)	2.9	3.15
Milk yield (kg/cow/day)	12.78	13.39
% Fat	4.97	5.37
% Protein	3.83	4.06
% Lactose	4.37	4.34
Milk solids (kg/cow/day)	1.11	1.25
Supplement (kg/cow/day)		
Concentrate	3	3
Silage	0	0
Cumulative		
Milk yield (kg/cow)	4085	3913
% Fat	4.45	4.64
% Protein	3.49	3.60
% Lactose	4.77	4.81
Milk solids (kg/cow)	322	322
SCC	135,000	111,000
Body Condition Score	2.91	2.85
Supplement (kg/cow)		
Concentrate	611	605
Silage to milking cows (kg DM/cow)	285	292
Conserved silage (kg DM/cow)	130	140
Sires	RUU, HZO, UYC TZD, CWJ, SBH	WAS, CJY, GHK KLK, ULK

*** These are raw data and have not been statistically analysed.**