

Ballyhaise Weekly Farm Notes - Monday 22/10/2012

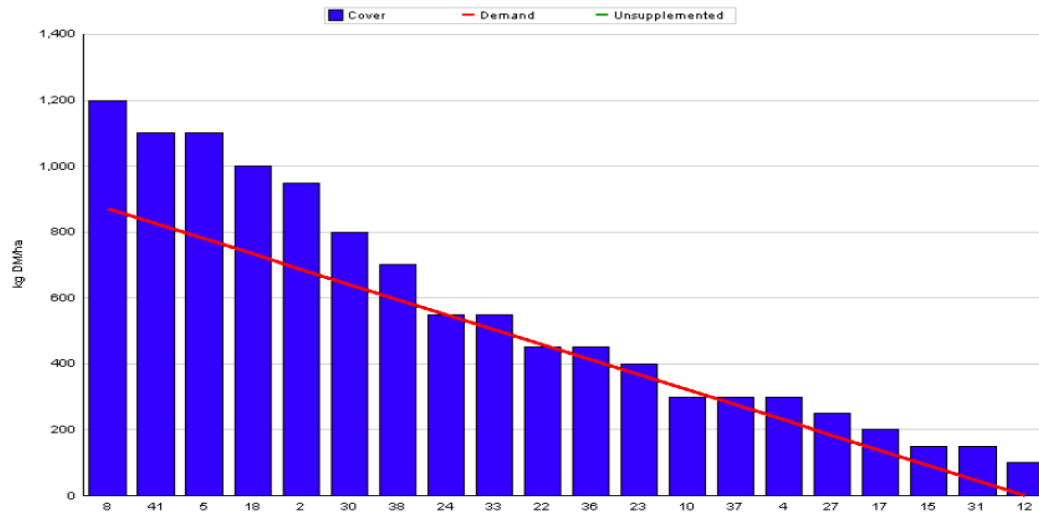
A. Critical Issues

1. Feed supplements to extend grazing.
2. Maintain cow condition.
3. Dry off low yielders.
4. Protect pastures from poaching.

B. On farm situation

1. Soil temperature today is 9.1°C.
2. Total rainfall over the past seven days was 24mm.
3. Average growth was 19kgDM/ha/day, (14% DM).
4. Feeding 3kg of concentrate and 6kg DM of silage.
5. Farm feed wedge (22/10/12).

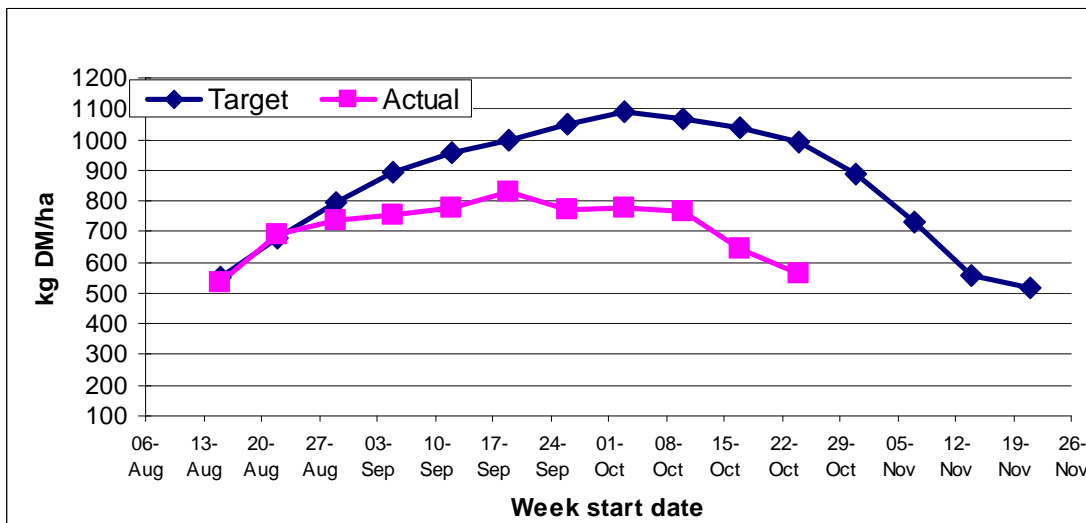
Moorepark Animal & Grassland Research and Innovation Centre		GrazePlan - Grass Measurement Report	
Group :	TEAGASC RESEARCH FARMS	Date Produced :	24-OCT-12
Farm :	Ballyhaise Farm	Ballyhaise calving date and genotype study 2012	
Date :	22-OCT-12	Treatment :	Jersey Fresian crossbred
Rotation Length :	40	Grass Allocation /LU (kg DM/LU) :	7
Number of Cows :	56	Farm Cover (kg DM/ha) :	566
Grass Allocation /cow (kg grass dry matter/LU) :	7	Farm Cover (kg DM/LU) :	182
Concentrate Fed (kg/cow) :	3	Stocking Rate (LU/ha) :	3.11
Silage Fed (kg DM/cow) :	6	Growth Rate :	19
N Application Rate (units/acre) :		Farm Demand (kg DM/ha/day) :	22
N Application Rate (kg/ha) :		Target pregrazing yield (kg DM/ha) :	870
Residual Height :	4		
Total Livestock (LU) :	56		



6. Farm cover is 566 kg DM / ha (182 kg DM / cow) and pre-grazing cover is 1200 kg DM / ha. We have decided to graze off paddocks 8, 5 and 38 as they are not suitable for carrying over winter. These swards are very yellow and there is too much dead material at the base to make them viable over winter. Grazing these paddocks is a risk as it will leave closing farm cover below target at 420

Kg DM / ha. Grazing will be finished by Friday which will be two weeks earlier than normal so even a low growth rate of 5 kg per day over that 2 week period will bring farm cover back up over 500 kg DM / ha. We will carry over paddock 41 as it is a fresh green sward and is quite dry which will be suitable for grazing next spring.

7. Grazing conditions have improved over the past week and cows are grazing paddocks out well down to 3.8cm.
8. Ground conditions have improved enough to spread remaining slurry using an umbilical system. Slurry is being applied at a rate of 2500 gals per acre on 43% of the farm. All paddocks being spread have less than 500 kg DM / ha cover.
9. Autumn Budget



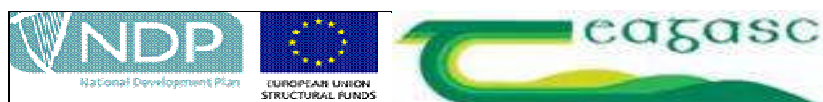
10. There were seven cows dried off last week and a further 6 will be dried off this week. We are using these cows to clean off some parts of paddocks that were poorly grazed during poor grazing conditions in the last round. There is a batch of 20 due for drying off on the 10th of November based on body condition score and expected calving date. There is 8% of the herd dry to date.
11. In-calf heifers were weighed on the 12th of October; they averaged 407kg which is on target. These are predominantly jersey crossbred animals with a mature live weight of 500kg. Body condition is a bit low so they are being supplemented with 1.5kg of an 18% protein concentrate. They will get a dose for fluke and worms next week. They are on the out wintering pad and getting silage ad lib. There are 10 heifers which will be sold to reduce winter feeding demand as they are surplus to requirement.
12. The 41 heifer calves were housed last week and are getting ad-lib silage and 1kg of concentrate. They will be clipped and weighed this week and any heifers below 210kg will be separated and fed meal separately.
13. Out-wintering pad has been re-chipped in preparation for winter. Four loads of chip were used costing €725 per load.

14. Full herd scan was done on the 30th of August. There were 8 cows empty out of 114 cows milking (7%) over a 13 week breeding season. The six week in-calf rate was 71% (81 cows); these are due to calve before the 22nd of March next year. There was one heifer empty out of 35 (3%) over a seven week breeding period. There are 25 heifers in-calf to first service (71%) and the rest were served with the stock bull. This is a total of 140 cows and heifers scanned in calf for next spring which will give us scope to do some voluntary culling.
15. Production per cow this week was 11.63kg at 5.38% fat and 3.97% protein (1.08 kg MS/cow), lactose 4.57%, SCC 154k, TBC 9k.

C. Critical short term actions :

- Allocating grass in 12 hr blocks.
- House cows by night.
- House calves and heifers.

www.agresearch.teagasc.ie/moorepark/



The herd is split on the bases of cow breed with 60 pure Friesian cows in one group and 56 crossbred cows in the other group.

Genetics 2012	Fr	Crossbred
EBI	142	148
Milk sub index	46	46
Fertility sub index	90	91
Milk kg	72	-26
Fat Kg	10	9
Fat %	0.14	0.2
Prot Kg	7	5.5
Prot %	0.09	0.13
Age profile (lactations)	3	2.7

Fertility 2012	Fr	Crossbred
EBI	142	148
Fertility sub index	90	91
24 day Submission rate (%)	90	91
Pregnancy rate to 1 st service (%)	48	56
42 day in-calf rate (%)	73	69
Straws per cow	1.75	1.74
13 week empty rate (%)	5	7

Week: 21/10/12	Fr	Crossbred
Stocking rate (cows/ha)	2.9	3.15
Milk yield (kg/cow/day)	12.25	11.01
% Fat	5.33	5.58
% Protein	3.92	4.43
% Lactose	4.42	4.40
Milk solids (kg/cow/day)	1.12	1.09
Supplement (kg/cow/day)		
Concentrate	3	3
Silage	6	6
Cumulative		
Milk yield (kg/cow)	4383	4236
% Fat	4.42	4.72
% Protein	3.51	3.66
% Lactose	4.74	4.72
Milk solids (kg/cow)	349	355
Milk solids (kg/ha)	1,012	1,118
Body Condition Score	2.91	2.85
Supplement (kg/cow)		
Concentrate	695	689
Silage to milking cows (kg DM/cow)	424	428
Conserved silage (kg DM/cow)	130	140
Sires	RUU, HZO, UYC TZD, CWJ, SBH	WAS, CJY, GHK KLK, ULK

* These are raw data and have not been statistically analysed.