

**A. Critical Issues**

1. Maintain grass quality.
2. Reduce pre-grazing yield to below 1400kg DM / ha.
3. Reach target residual of 4cm

**B. Whole farm situation**

1. Soil temperature today is 13.6°C.
2. Total rainfall over the past seven days was 35mm.
3. Average growth was 59kgDM/ha/day, (16% DM).

**C. 2013 Calving date trial**

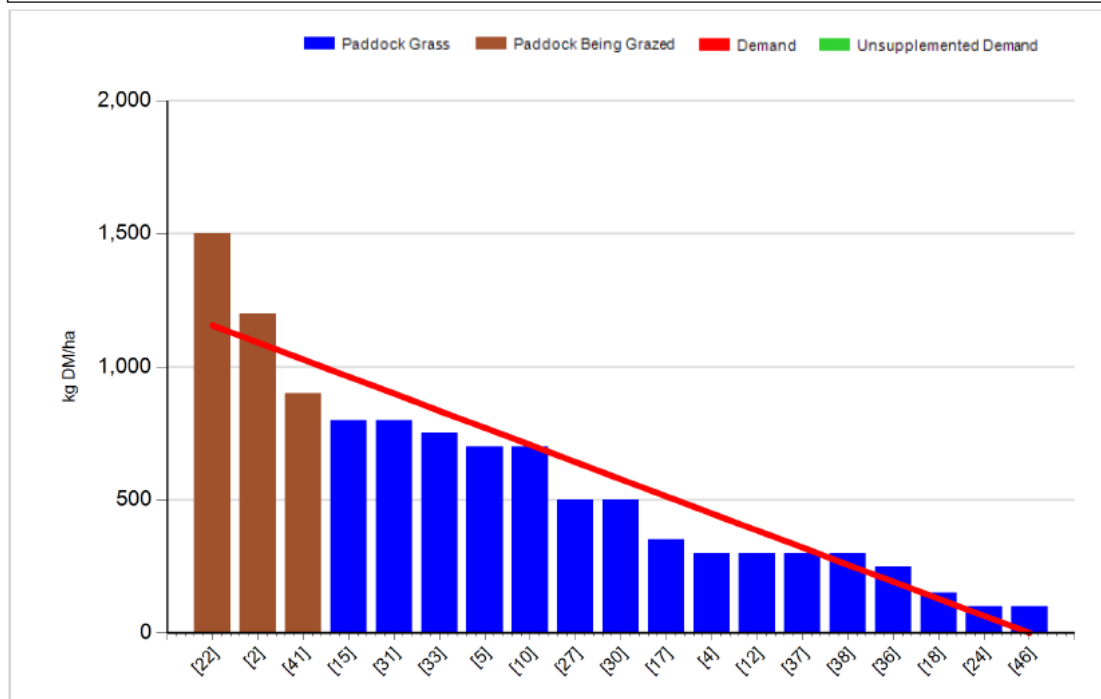
- The herd is split into two separate calving dates
- Early calving group – mean calving date is the 20<sup>th</sup> of Feb.
- Late calving group – mean calving date is the 10<sup>th</sup> of March.
- Stocking rate is 2.9 cows per ha for both groups and fertiliser input will be constant (250Kg N / ha).
- Within each group there are equal numbers of Friesian and crossbred cows

**Early calving Group**

Rotation Length (days):	21	Silage Fed (kg DM/cow):	0.0
Grass Allocation/Cow (kg DM/cow):	16.0	Residual Height (cm):	3.5
No. of Cows:	60		
Concentrate Fed (kg/cow):	1.0		

**Cover Parameters**

Grass Allocation/LU (kg DM/LU):	16.0	Growth Rate (kg/ha/day):	49
Total Livestock (LU):	60.0	Farm Demand (kg DM/ha/day):	55
Farm Cover (kg DM/ha):	563	Target Pre-grazing yield (kg DM/ha):	1156
Farm Cover (kg DM/LU):	164		
Stocking Rate (LU/ha):	3.44		



1. Farm cover is 563 kg DM / ha (164 kg DM / cow) and pre-grazing cover is 1500 kg DM / ha.
2. 1.5 ha have been skipped over for silage, these paddocks have a cover of 1600-2000kg DM / ha. These paddocks will be cut at covers of 2000-2500kg DM / ha.
3. Last week's rain has not affected ground conditions adversely and graze out is good with paddocks being grazed down to 4.4cm residual on average.
4. Seven weeks of AI done with one late calving cow not submitted (98% submitted). The 24 day non-return rate is 60%.

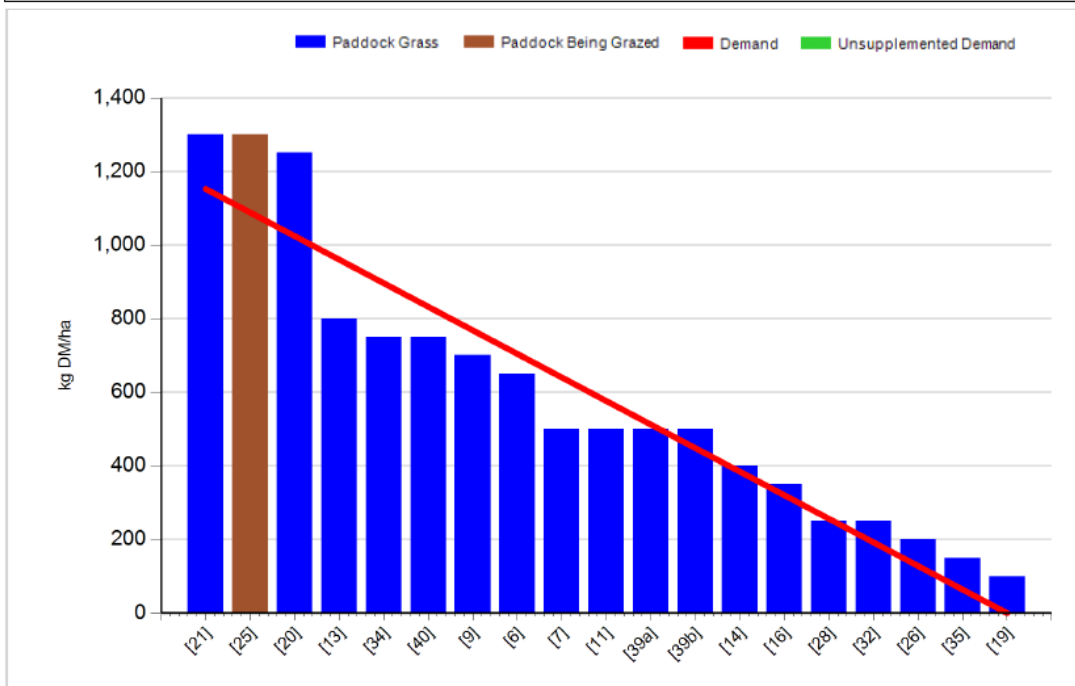
## Late Calving Group

### Management Decisions

Rotation Length (days):	21	Silage Fed (kg DM/cow):	0.0
Grass Allocation/Cow (kg DM/cow):	16.0	Residual Height (cm):	3.5
No. of Cows:	60		
Concentrate Fed (kg/cow):	1.0		

### Cover Parameters

Grass Allocation/LU (kg DM/LU):	16.0	Growth Rate (kg/ha/day):	69
Total Livestock (LU):	60.0	Farm Demand (kg DM/ha/day):	55
Farm Cover (kg DM/ha):	568	Target Pre-grazing yield (kg DM/ha):	1152
Farm Cover (kg DM/LU):	166		
Stocking Rate (LU/ha):	3.43		



1. Farm cover is 568 kg DM / ha (166 kg DM / cow) and pre-grazing cover is 1300 kg DM / ha.
2. Have skipped 1.5ha for silage this week to maintain pre-grazing yield below 1400kg.
3. Have done 5 weeks of AI and two cows not submitted (96% Submission rate). One has got a CIDR and the other will come into heat in the next week.

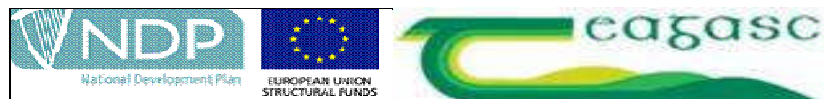
**C. Critical short term actions :**

- Skip 10% of area for silage
- Skip paddocks above 1500kg DM / ha
- Spread 30 units of Sul-CAN after grazing

**D. Bulk tank details :**

Milk yield 20.4kg, Fat 4.32%, Protein 3.43% (1.58kg MS) SCC 109,000, TBC 4,000.

[www.agresearch.teagasc.ie/moorepark/](http://www.agresearch.teagasc.ie/moorepark/)



<b>Date : 16/06/2013</b>	<b>Early</b>	<b>Late</b>	<b>FR</b>	<b>JFX</b>
<b>Stocking rate (cows/ha)</b>	<b>2.9</b>	<b>2.9</b>	<b>2.9</b>	<b>2.9</b>
Milk yield (kg/cow/day)	20.8	21.3	22.3	19.8
% Fat	4.76	4.46	4.50	4.76
% Protein	3.57	3.51	3.48	3.60
% Lactose	4.79	4.83	4.78	4.81
Milk solids (kg/cow/day)	1.73	1.69	1.78	1.65
Supplement (kg/cow/day)				
Concentrate	1	1	1	1
Silage	0	0	0	0
<b>Cumulative</b>				
Milk yield (kg/cow)	2470	2060	2336	2195
% Fat	4.65	4.63	4.56	4.75
% Protein	3.48	3.50	3.42	3.56
% Lactose	4.80	4.81	4.79	4.82
Milk solids (kg/cow)	201	168	186	182
Weight	480	489	514	455
Body Condition Score	2.83	2.78	2.76	2.85
% Calved	100	100	100	100
Supplement (kg/cow)				
Concentrate	480	362		
Silage to milking cows (kg DM/cow)	309	159		
Conserved silage (kg DM/cow)				

**\* These are raw data and have not been statistically analysed.**