

A. Critical Issues

1. Build covers.
2. Use strip wire to maintain residual.

B. 2013 Calving date trial

- The herd is split into two separate calving dates
- Early calving group – mean calving date is the 25th of Feb.
- Late calving group – mean calving date is the 10th of March.
- Stocking rate is 2.9 cows per ha for both groups and fertiliser input will be constant (250Kg N / ha).
- Within each group there are equal numbers of Friesian and crossbred cows

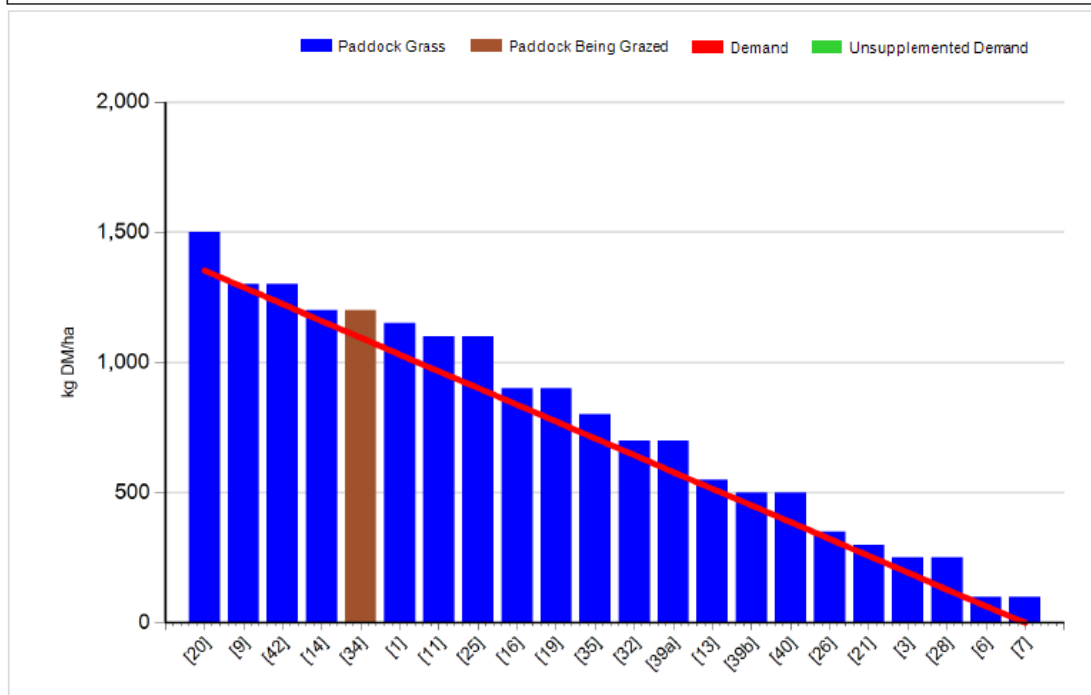
C. Whole farm situation

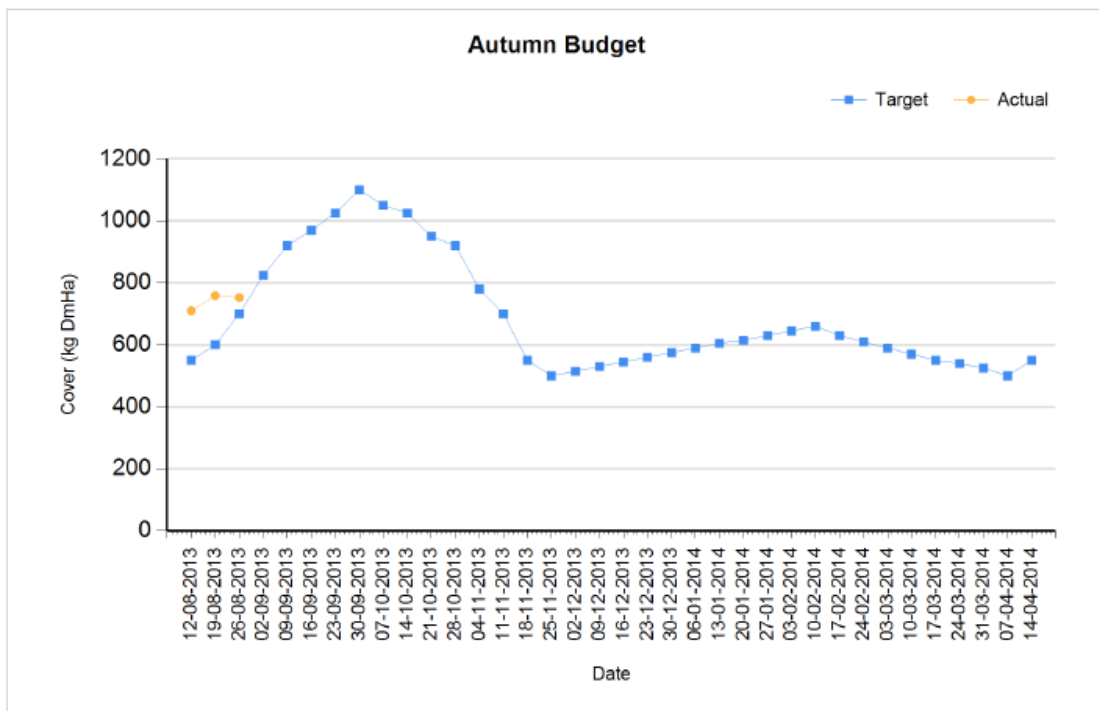
1. Soil temperature today is 16°C.
2. Total rainfall over the past seven days was 6mm.
3. Average growth was 74kgDM/ha/day, (17% DM).
4. Rotation length 28 days.
5. Feed wedge 26/08/2013

| | | | |
|-----------------------------------|------|-------------------------|-----|
| Rotation Length (days): | 28 | Silage Fed (kg DM/cow): | 0.0 |
| Grass Allocation/Cow (kg DM/cow): | 16.0 | Residual Height (cm): | 3.5 |
| No. of Cows: | 60 | | |
| Concentrate Fed (kg/cow): | 0.0 | | |

Cover Parameters

| | | | |
|---------------------------------|------|--------------------------------------|------|
| Grass Allocation/LU (kg DM/LU): | 16.0 | Growth Rate (kg/ha/day): | 74 |
| Total Livestock (LU): | 60.0 | Farm Demand (kg DM/ha/day): | 48 |
| Farm Cover (kg DM/ha): | 753 | Target Pre-grazing yield (kg DM/ha): | 1353 |
| Farm Cover (kg DM/LU): | 249 | | |
| Stocking Rate (LU/ha): | 3.02 | | |





6. Farm cover is 753 kg DM / ha (249 kg DM / cow) and pre-grazing cover is 1600 kg DM / ha. Growth rates are still excellent so we will have to monitor the situation closely to avoid building covers too quickly. If growth rate stays at this level farm cover will be 900kg DM / ha next week.
7. Cover is slightly ahead of target according to the autumn budget. One paddock was cut for silage last week.
8. We have started to use the strip wire to achieve good graze out on these slightly heavy covers. Average post grazing height this week is 4.2 cm.
9. Total growth to date is 8.8 tons DM / ha.
10. The farm will be bulk spread with 27 units of CAN next week.
11. Heifer calves were dosed with a levamisol based injection and moved to after grass.
12. In-calf heifers were weighed last week; the average weight gain was 0.6kg / day which is behind target. Average weight of the Fr heifers is 393kg which is slightly behind target. Average weight of the cross bred heifers is 370kg which is on target. Even though average weights are close to target 40% of animals are below target weight and will be split from the main group and grazed ahead to help catch up.

C. Bulk tank details :

Milk yield 16.2 litres, Fat 4.51%, Protein 3.58% (1.34kg MS) SCC 148,000, TBC 67,000.

www.agresearch.teagasc.ie/moorepark/



| Date : 25/08/2013 Mean calving date | Early 25th Feb | | Late 10th March | |
|--|--|--------------|---|--------------|
| | FR | JFX | FR | JFX |
| Stocking rate (cows/ha) | 2.9 | 2.9 | 2.9 | 2.9 |
| Milk yield (kg/cow/day) | 17.2 | 14.7 | 16.7 | 14.8 |
| % Fat | 4.22 | 4.58 | 4.19 | 4.46 |
| % Protein | 3.50 | 3.79 | 3.54 | 3.70 |
| % Lactose | 4.61 | 4.66 | 4.66 | 4.64 |
| Milk solids (kg/cow/day) | 1.33 | 1.23 | 1.29 | 1.20 |
| Supplement (kg/cow/day) | | | | |
| Concentrate | 0 | 0 | 0 | 0 |
| Silage | 0 | 0 | 0 | 0 |
| Cumulative | | | | |
| Milk yield (kg/cow) | 3,949 | 3,662 | 3,509 | 3,234 |
| % Fat | 4.45 | 4.66 | 4.51 | 4.72 |
| % Protein | 3.39 | 3.63 | 3.47 | 3.54 |
| % Lactose | 4.74 | 4.78 | 4.76 | 4.77 |
| Milk solids (kg/cow) | 310 | 304 | 280 | 267 |
| Weight | 505 | 456 | 523 | 455 |
| Body Condition Score | 2.79 | 2.88 | 2.75 | 2.80 |
| % Calved | 100 | 100 | 100 | 100 |
| Supplement (kg/cow) | | | | |
| Concentrate | | 635 | | 517 |
| Silage to milking cows (kg DM/cow) | | 330 | | 180 |
| Conserved silage (kg DM/cow) | | 480 (40%) | | 480 (40%) |

*** These are raw data and have not been statistically analysed.**