

**A. Critical Issues**

1. 36 hour allocations.
2. Maintain target residual (4cm).
3. Supervision of stock bulls.
4. Control of docks in paddocks.

**B. 2014 Calving date trial**

- The herd is split into two separate calving dates
- Early calving group – mean calving date is the 25<sup>th</sup> of Feb.
- Late calving group – mean calving date is the 10<sup>th</sup> of March.
- Within each group there are equal numbers of Friesian and crossbred cows.

**C. Whole farm situation**

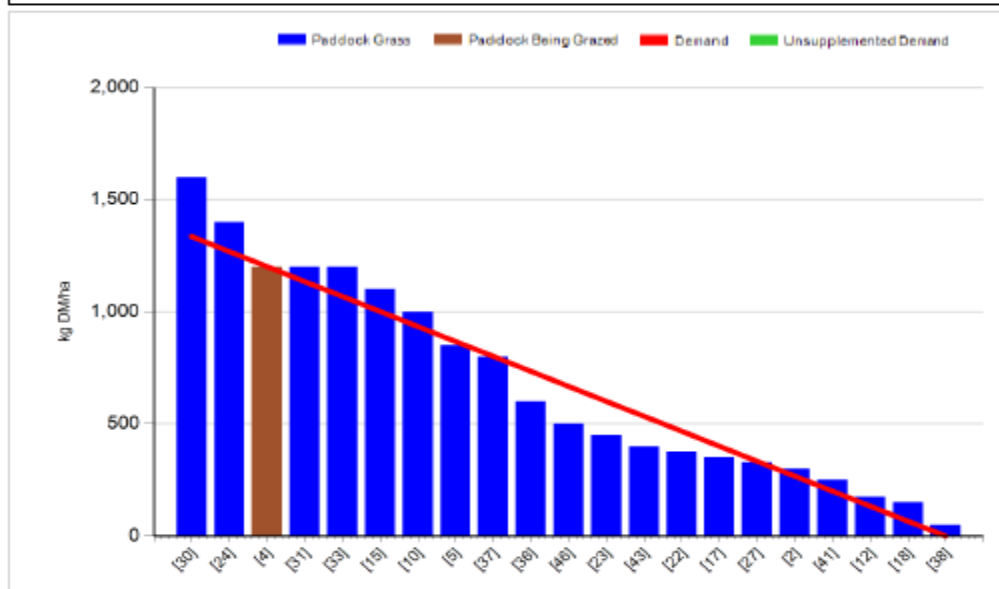
- Soil temperature today is 14.5mm.
- Total rainfall for past 7 days is 14mm.
- Stock bulls have been removed – 13 weeks breeding done.
- Continuing to spray for docks where needed as growing conditions are good.
- Calves weighed 168kg average, still behind target but ADG was 0.9 kg / day.
- Calves are being moved onto after grass which should boost growth rates.
- Milk yield 15.9kg, 4.64% fat, 3.85% protein (1.37kg Ms / cow), SCC 162,000 and TBC 3,000.

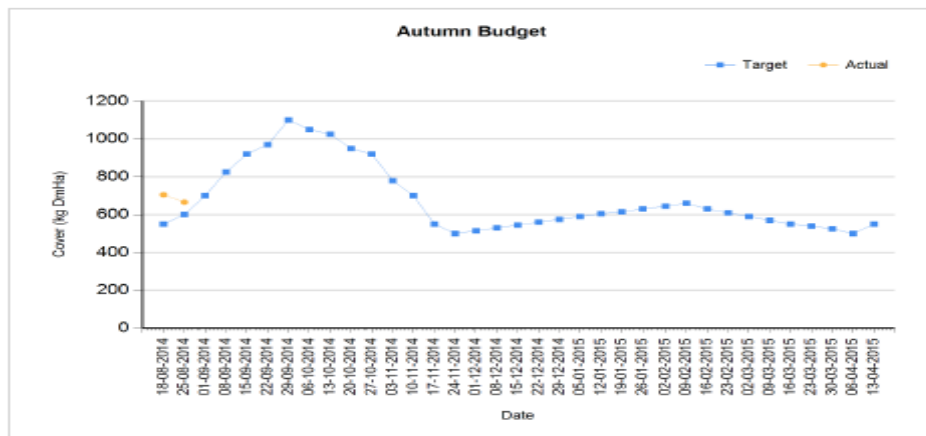
**D. Early group**

Rotation Length (days):	27	Silage Fed (kg DM/cow):	
Grass Allocation/Cow (kg DM/cow):	16.0	Residual Height (cm):	3.5
No. of Cows:	60		
Concentrate Fed (kg/cow):	1.0		

**Cover Parameters**

Grass Allocation/LU (kg DM/LU):	16.0	Growth Rate (kg/ha/day):	81
Total Livestock (LU):	60.0	Farm Demand (kg DM/ha/day):	49
Farm Cover (kg DM/ha):	666	Target Pre-grazing yield (kg DM/ha):	1335
Farm Cover (kg DM/LU):	216		
Stocking Rate (LU/ha):	3.09		





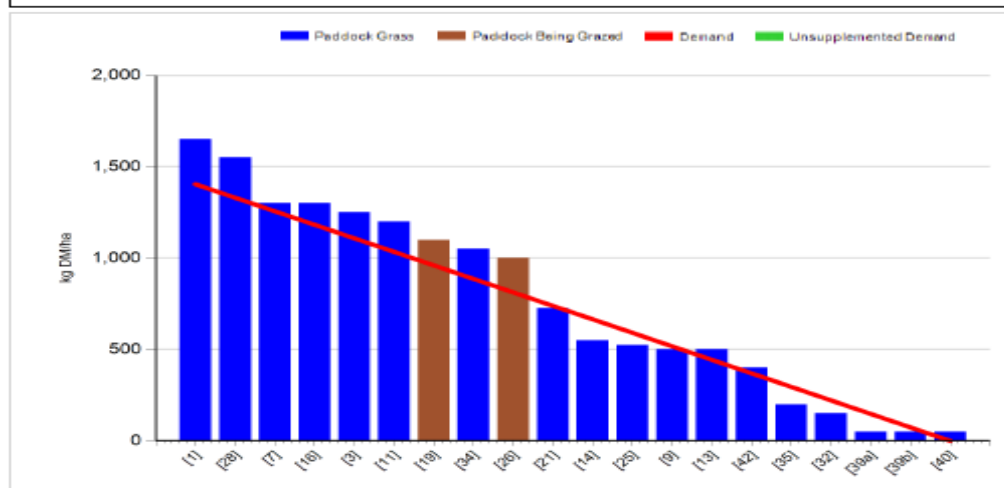
1. Farm cover is 666 kg DM / ha (216kg DM / cow) which is slightly above target according to our autumn budget.
2. Growth rate was 81 kg DM / ha which is well ahead of demand of 49 kg DM / ha. This should allow us to build more cover for the week ahead.
3. We have skipped over 1 paddock for silage; this paddock has a cover of 1700kg DM/ha and will be cut as soon as possible.
4. Pre-grazing yield is 1550kg DM / ha which is slightly above target but it is good quality and skipping this paddock would reduce farm cover below target.
5. Grazing down to 4.3cm on average. Ground conditions are starting to get wet but still ok.
6. Started AI on the 28<sup>th</sup> of April, 100% submitted in 6 weeks, conception rate was 50%, six week in calf rate was 75%.
7. 12.2 ton DM / ha grown to date.

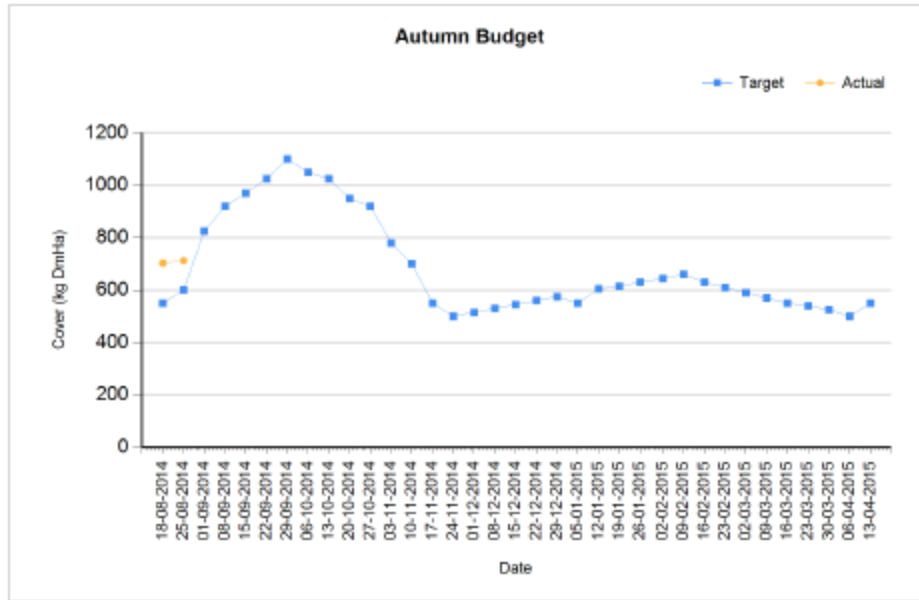
### C. Late Group

Rotation Length (days):	27	Silage Fed (kg DM/cow):	0.0
Grass Allocation/Cow (kg DM/cow):	16.0	Residual Height (cm):	3.5
No. of Cows:	59		
Concentrate Fed (kg/cow):	1.0		

#### Cover Parameters

Grass Allocation/LU (kg DM/LU):	16.0	Growth Rate (kg/ha/day):	85
Total Livestock (LU):	59.0	Farm Demand (kg DM/ha/day):	52
Farm Cover (kg DM/ha):	713	Target Pre-grazing yield (kg DM/ha):	1404
Farm Cover (kg DM/LU):	219		
Stocking Rate (LU/ha):	3.25		





1. Farm cover is 716 kg DM / ha (219kg DM / cow) which is slightly above target.
2. Growth rate was 85kg DM / ha which is similar to demand of 52kg DM / ha.
3. We have skipped 2 paddocks for silage that have covers of 1200 kg DM / ha, we will cut these early next week.
4. Pre – grazing yield is 1600kg DM / ha which is above target but quality is excellent.
5. Grazing out to 4.3cm on average.
6. Ai started on the 13<sup>th</sup> of May, 100% submitted in 5 weeks, Conception rate 50% and six week in-calf rate of 73%.
7. 11.9 tons DM / ha grown to date.

**D. Critical short term actions :**

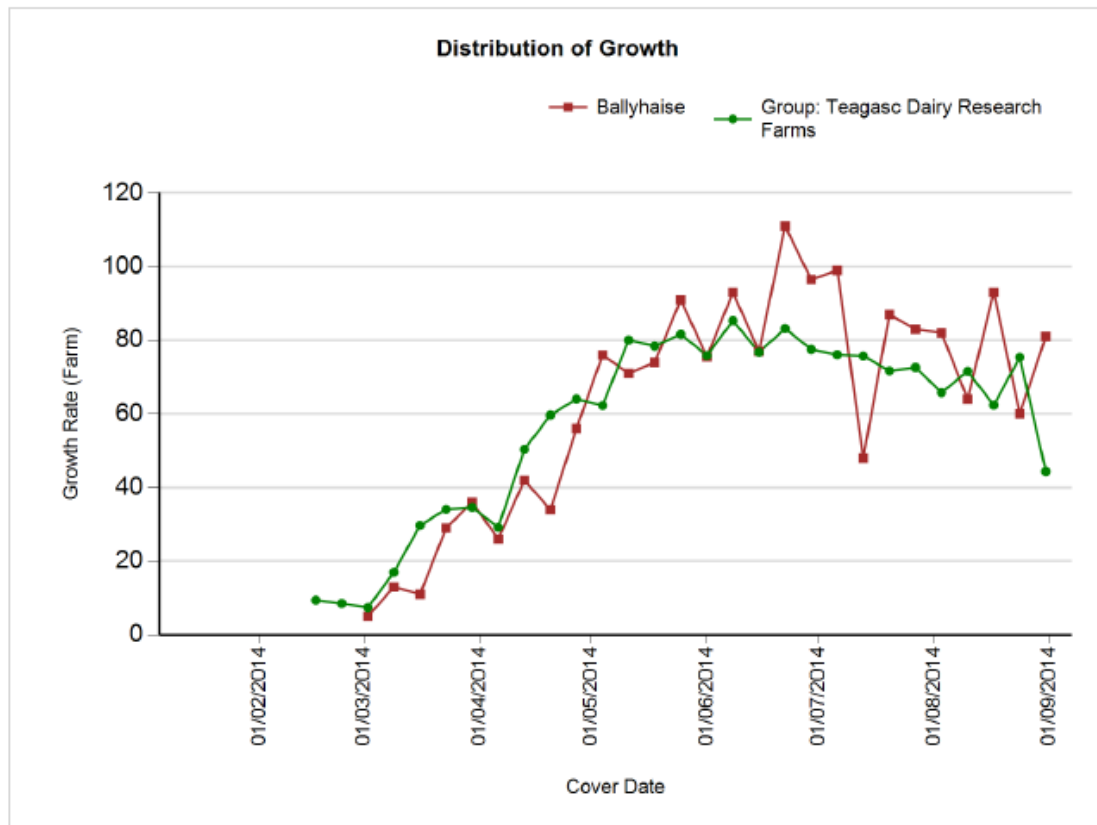
- Removing surpluses as building covers too quickly.
- Calves being moved to after grass.
- Spray for docks where needed.

Date : 24/08/2014 Mean calving date	Early 25 <sup>th</sup> Feb		Late 10 <sup>th</sup> March	
	FR	JFX	FR	JFX
<b>Stocking rate (cows/ha)</b>	<b>2.9</b>	<b>2.9</b>	<b>2.9</b>	<b>2.9</b>
Milk yield (kg/cow/day)	17.7	15.7	18.8	15.4
% Fat	4.67	5.01	4.31	4.48
% Protein	3.53	3.71	3.58	3.74
% Lactose	4.76	4.78	4.77	4.77
Milk solids (kg/cow/day)	1.45	1.36	1.48	1.26
Supplement (kg/cow/day)				
Concentrate	0.75	0.75	0.75	0.75
Silage	0	0	0	0
<b>Cumulative</b>				
Milk yield (kg/cow)	4,126	3,754	3,945	3,596
% Fat	4.33	4.64	4.37	4.43
% Protein	3.36	3.52	3.47	3.55
% Lactose	4.88	4.93	4.86	4.86
Milk solids (kg/cow)	317	306	310	287
Weight	521	478	536	450
Body Condition Score	2.86	2.83	2.86	2.89
Supplement (kg/cow)				
Concentrate		355		320
Silage to milking cows (kg DM/cow)		125		80
Conserved silage (kg DM/cow)		795		745

[www.agresearch.teagasc.ie/moorepark/](http://www.agresearch.teagasc.ie/moorepark/)



## Growth to date compared to average of all Teagasc Research Farms



**Growth To Date – 12.1 tonnes DM / ha.**