

Ballyhaise Weekly Farm Notes – Monday 01/09/2014

A. Critical Issues

1. 24 hour allocations
2. Maintain target residual (4cm).
3. Control of docks in paddocks.
4. Improve growth rates in young stock.

B. 2014 Calving date trial

- The herd is split into two separate calving dates
- Early calving group – mean calving date is the 25th of Feb.
- Late calving group – mean calving date is the 10th of March.
- Within each group there are equal numbers of Friesian and crossbred cows.

C. Whole farm situation

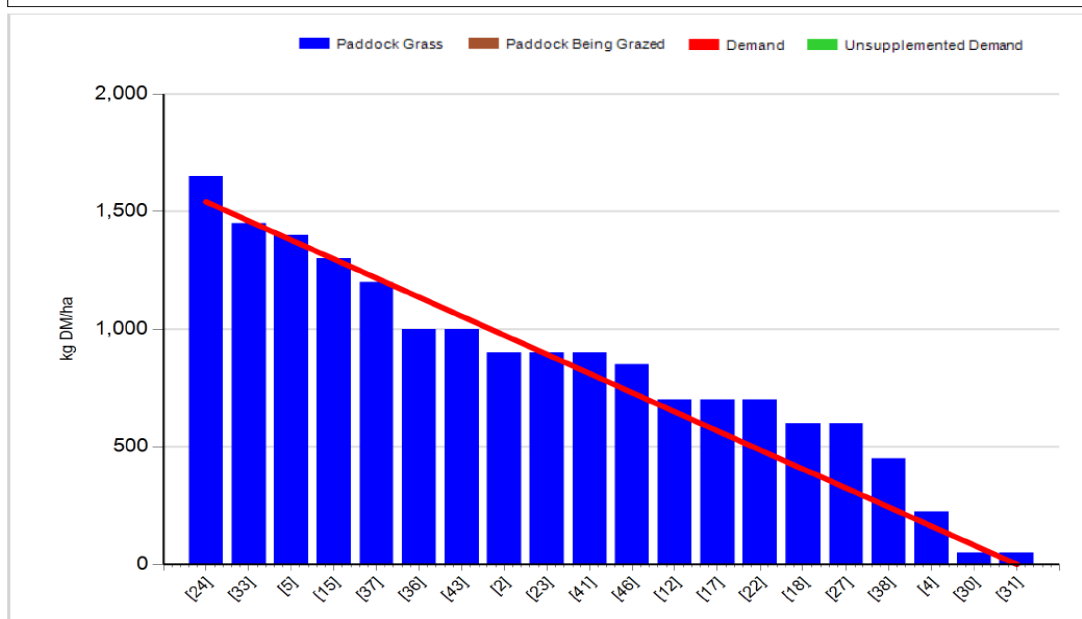
- Soil temperature today is 15.7 mm.
- Total rainfall for past 7 days is 14mm.
- Stock bulls have been removed – 13 weeks breeding done.
- Continuing to spray for docks where needed as growing conditions are good.
- Calves weighed 168kg average, still behind target but ADG was 0.9 kg / day.
- Calves are being moved onto after grass which should boost growth rates.
- In-calf heifers weighed 1st Sept – 415kg, (ADG 0.37kg / day).
- Milk yield 15.3kg, 4.9% fat, 3.85% protein (1.34kg Ms / cow), SCC 146,000 and TBC 3,000.

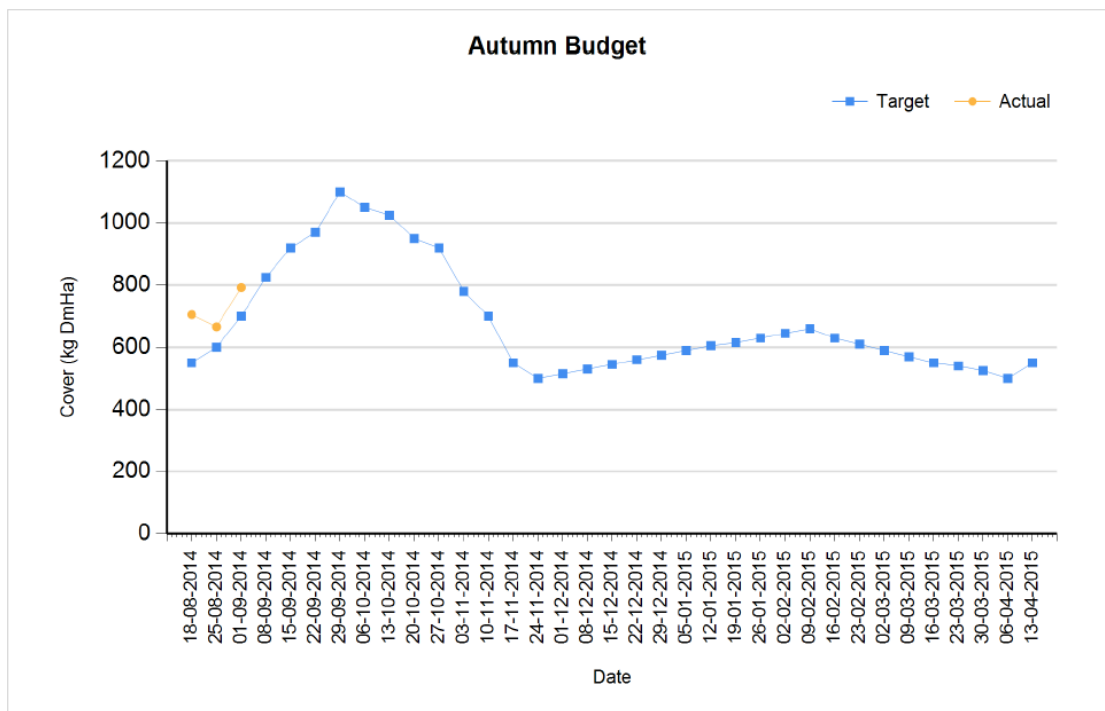
D. Early group

Rotation Length (days):	30	Silage Fed (kg DM/cow):	
Grass Allocation/Cow (kg DM/cow):	16.0	Residual Height (cm):	4.0
No. of Cows:	60		
Concentrate Fed (kg/cow):	1.0		

Cover Parameters

Grass Allocation/LU (kg DM/LU):	16.0	Growth Rate (kg/ha/day):	82
Total Livestock (LU):	60.0	Farm Demand (kg DM/ha/day):	51
Farm Cover (kg DM/ha):	792	Target Pre-grazing yield (kg DM/ha):	1541
Farm Cover (kg DM/LU):	247		
Stocking Rate (LU/ha):	3.21		





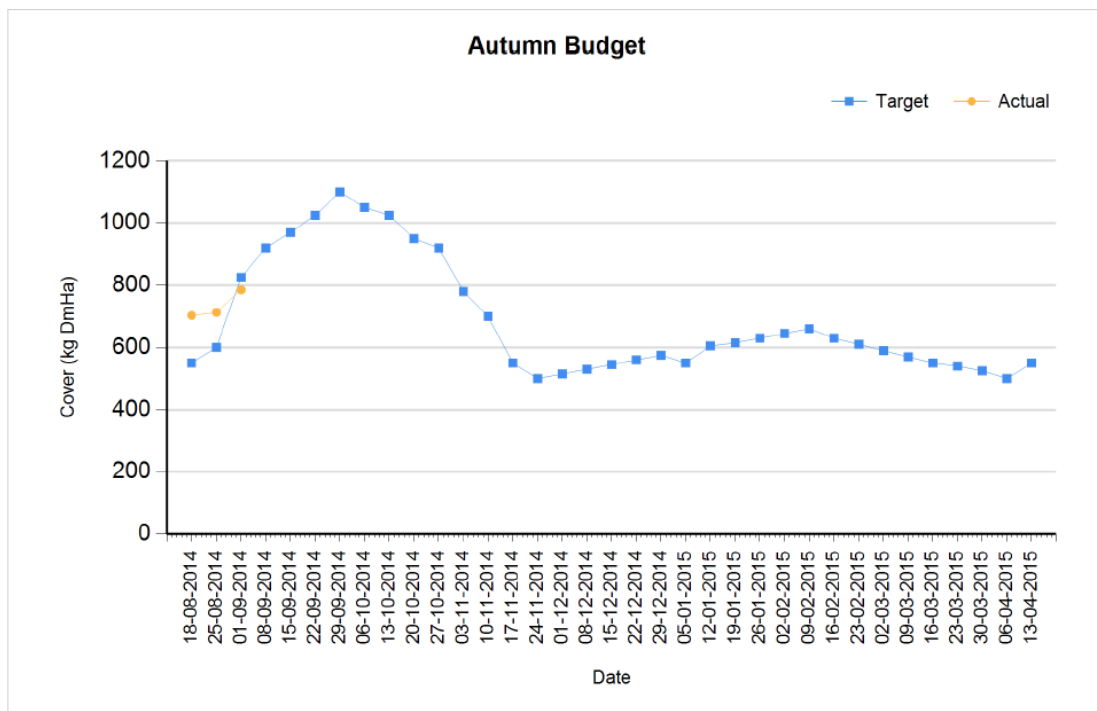
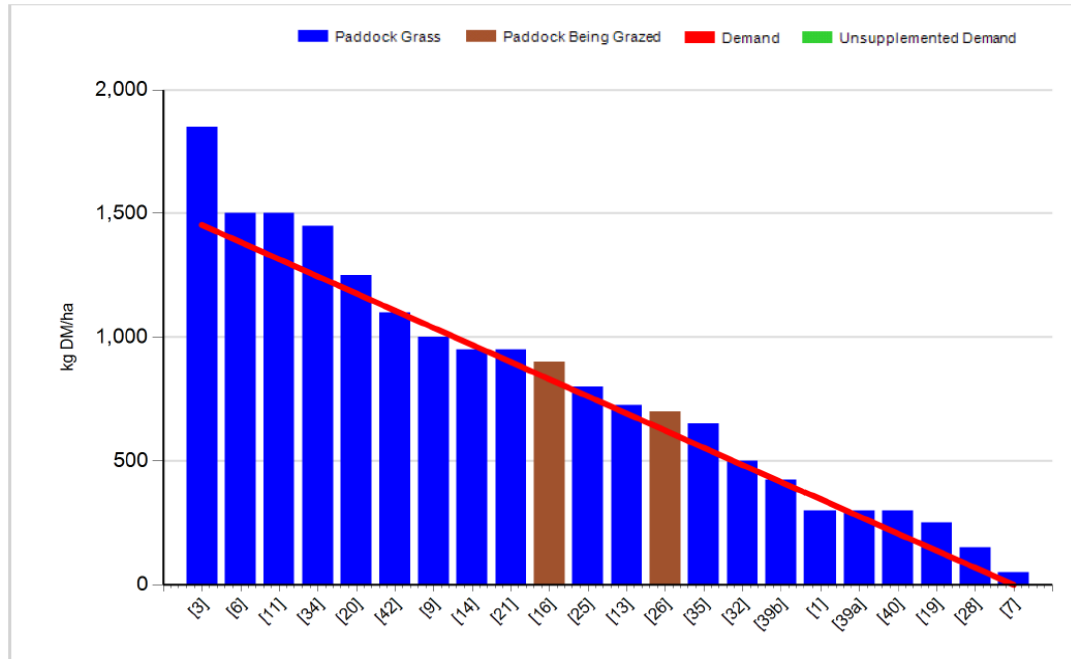
1. Farm cover is 792 kg DM / ha (247kg DM / cow) which is above target according to our autumn budget.
2. Growth rate was 82 kg DM / ha which is well ahead of demand of 51 kg DM / ha. This should allow us to build more cover for the week ahead.
3. We have skipped over 1 paddock for silage; this paddock has a cover of 1900kg DM/ha and will be cut as soon as possible.
4. Pre-grazing yield is 1600kg DM / ha which is slightly above target but it is good quality and skipping this paddock would reduce farm cover below target.
5. Grazing down to 4.1cm on average. Ground conditions are starting to get wet but still ok.
6. Started AI on the 28th of April, 100% submitted in 6 weeks, conception rate was 50%, six week in calf rate was 75%.
7. 12.6 ton DM / ha grown to date.

C. Late Group

Rotation Length (days):	30	Silage Fed (kg DM/cow):	0.0
Grass Allocation/Cow (kg DM/cow):	16.0	Residual Height (cm):	3.5
No. of Cows:	59		
Concentrate Fed (kg/cow):	1.0		

Cover Parameters

Grass Allocation/LU (kg DM/LU):	16.0	Growth Rate (kg/ha/day):	76
Total Livestock (LU):	59.0	Farm Demand (kg DM/ha/day):	48
Farm Cover (kg DM/ha):	785	Target Pre-grazing yield (kg DM/ha):	1454
Farm Cover (kg DM/LU):	259		
Stocking Rate (LU/ha):	3.03		



1. Farm cover is 785 kg DM / ha (259kg DM / cow) which is slightly above target.
2. Growth rate was 76kg DM / ha which is similar to demand of 48kg DM / ha.
3. All paddocks are back in the grazing round.

4. Pre – grazing yield is 1800kg DM / ha which is above target but quality is excellent.
5. Grazing out to 4.2cm on average.
6. Ai started on the 13th of May, 100% submitted in 5 weeks, Conception rate 50% and six week in-calf rate of 73%.
7. 12.2 tons DM / ha grown to date.

D. Critical short term actions :

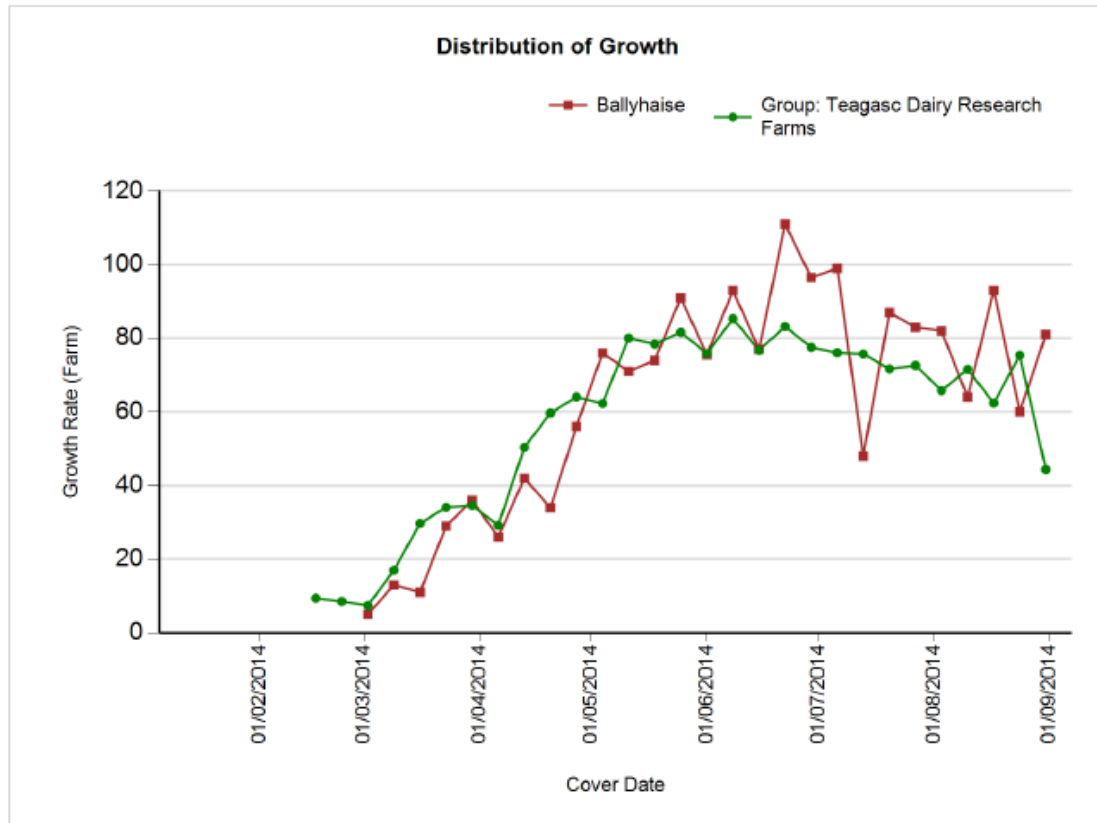
- Removing surpluses as building covers too quickly.
- In- calf heifers need to be moved to fresh grass twice a week to boost growth rates.
- 30units of Urea bulk spread this week.
- Spray for docks where needed.

Date : 31/08/2014 Mean calving date	Early 25 th Feb		Late 10 th March	
	FR	JFX	FR	JFX
Stocking rate (cows/ha)	2.9	2.9	2.9	2.9
Milk yield (kg/cow/day)	18.2	16.2	18.7	16.2
% Fat	4.72	4.89	4.66	4.83
% Protein	3.81	4.06	3.79	4.04
% Lactose	4.50	4.54	4.61	4.55
Milk solids (kg/cow/day)	1.56	1.45	1.58	1.43
Supplement (kg/cow/day)				
Concentrate	0.75	0.75	0.75	0.75
Silage	0	0	0	0
Cumulative				
Milk yield (kg/cow)	4,243	3,856	4,078	3,715
% Fat	4.34	4.64	4.40	4.46
% Protein	3.38	3.55	3.49	3.57
% Lactose	4.86	4.91	4.84	4.84
Milk solids (kg/cow)	328	316	322	298
Weight	521	478	536	469
Body Condition Score	2.86	2.83	2.86	2.89
Supplement (kg/cow)				
Concentrate		385		346
Silage to milking cows (kg DM/cow)		125		80
Conserved silage (kg DM/cow)		795		745

www.agresearch.teagasc.ie/moorepark/



Growth to date compared to average of all Teagasc Research Farms



Growth To Date – 12.4 tonnes DM / ha.