

**A. Critical Issues**

1. 12 hour allocations
2. Maintain target residual (4cm).
3. Improve growth rates in young stock.
4. Get last Nitrogen spread.
5. Graze off wet paddocks when conditions are good.

**B. 2014 Calving date trial**

- The herd is split into two separate calving dates
- Early calving group – mean calving date is the 25<sup>th</sup> of Feb.
- Late calving group – mean calving date is the 10<sup>th</sup> of March.
- Within each group there are equal numbers of Friesian and crossbred cows.

**C. Whole farm situation**

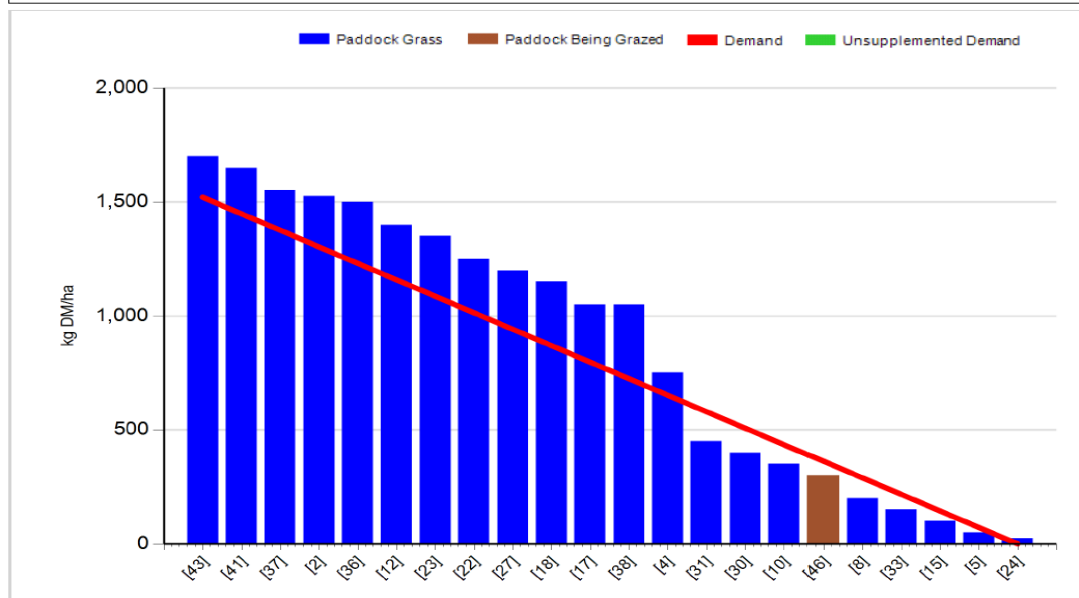
- Soil temperature today is 2 mm.
- Total rainfall for past 7 days is 13.5 mm.
- Calves weighed 168kg average, still behind target but ADG was 0.9 kg / day.
- Calves are being moved onto after grass which should boost growth rates.
- In –calf heifers weighed 1<sup>st</sup> Sept – 415kg, (ADG 0.37kg / day).
- Spread 23 units of Urea on last paddocks this week.
- Milk yield 15.1kg, 4.61% fat, 3.78% protein (1.26kg Ms / cow), SCC 191,000 and TBC 3,000.

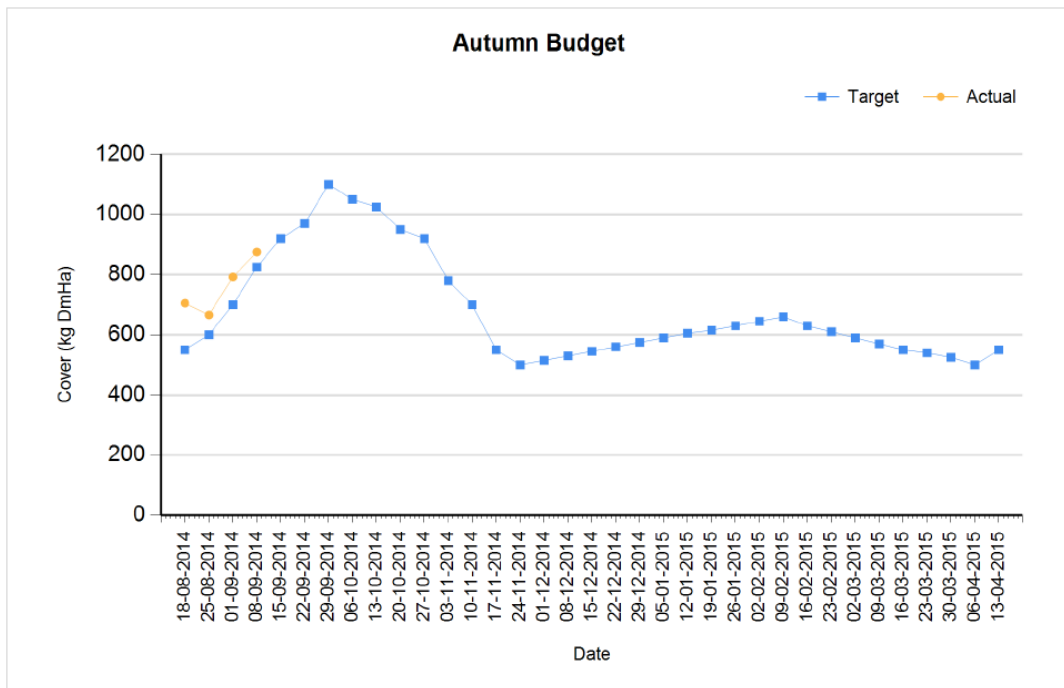
**D. Early group**

Rotation Length (days):	32	Silage Fed (kg DM/cow):	
Grass Allocation/Cow (kg DM/cow):	16.0	Residual Height (cm):	4.0
No. of Cows:	60		
Concentrate Fed (kg/cow):	1.0		

**Cover Parameters**

Grass Allocation/LU (kg DM/LU):	16.0	Growth Rate (kg/ha/day):	77
Total Livestock (LU):	60.0	Farm Demand (kg DM/ha/day):	47
Farm Cover (kg DM/ha):	875	Target Pre-grazing yield (kg DM/ha):	1521
Farm Cover (kg DM/LU):	295		
Stocking Rate (LU/ha):	2.97		





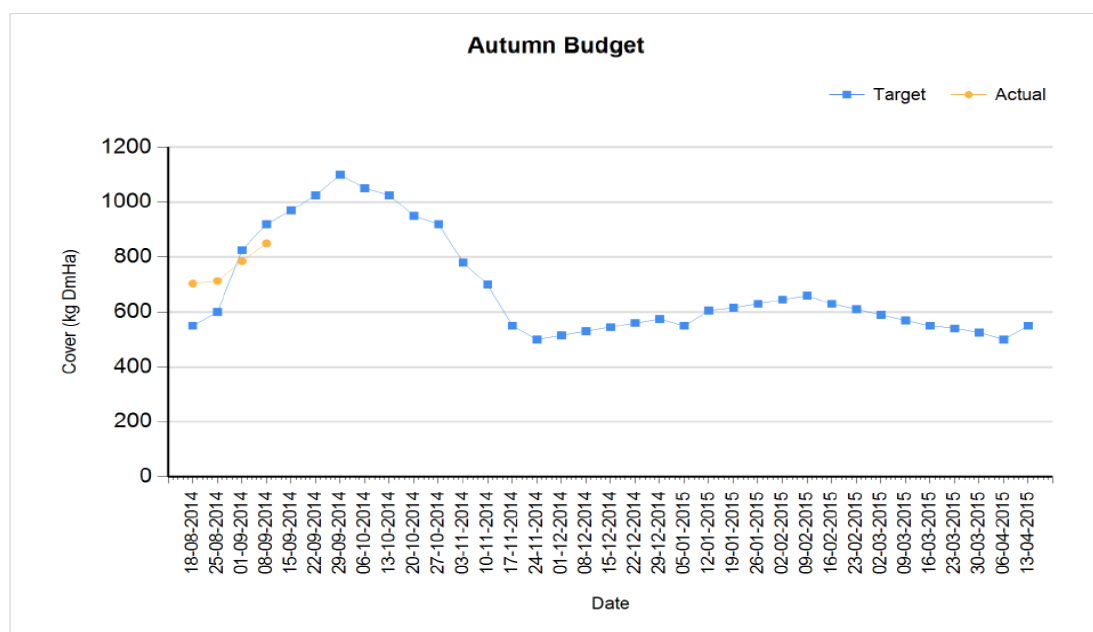
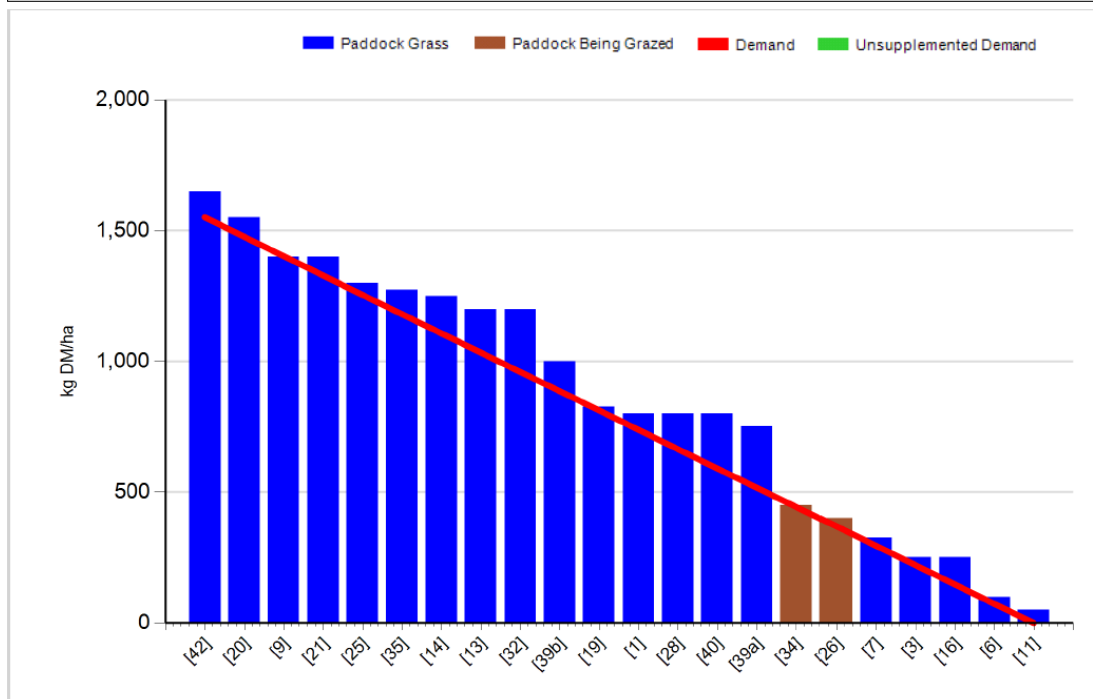
1. Farm cover is 875 kg DM / ha (295kg DM / cow) which is above target according to our autumn budget.
2. Growth rate was 77 kg DM / ha which is well ahead of demand of 47 kg DM / ha. This should allow us to build more cover for the week ahead.
3. We have skipped over 1 paddock for silage; this paddock has a cover of 1650kg DM/ha and will be cut as soon as possible.
4. Pre-grazing yield is 1650kg DM / ha which is slightly above target but it is good quality and skipping this paddock would reduce farm cover below target.
5. Grazing down to 4.1cm on average. Ground conditions are excellent; we will take the opportunity to get our wet ground grazed off this week.
6. Started AI on the 28<sup>th</sup> of April, 100% submitted in 6 weeks, conception rate was 50%, six week in calf rate was 75%.
7. 13.1 ton DM / ha grown to date.

### C. Late Group

Rotation Length (days):	32	Silage Fed (kg DM/cow):	0.0
Grass Allocation/Cow (kg DM/cow):	16.0	Residual Height (cm):	3.5
No. of Cows:	59		
Concentrate Fed (kg/cow):	1.0		

#### Cover Parameters

Grass Allocation/LU (kg DM/LU):	16.0	Growth Rate (kg/ha/day):	71
Total Livestock (LU):	59.0	Farm Demand (kg DM/ha/day):	48
Farm Cover (kg DM/ha):	850	Target Pre-grazing yield (kg DM/ha):	1551
Farm Cover (kg DM/LU):	281		
Stocking Rate (LU/ha):	3.03		



1. Farm cover is 850 kg DM / ha (281kg DM / cow) which is slightly below target.
2. Growth rate was 71kg DM / ha which is above demand of 48kg DM / ha.

3. All paddocks are back in the grazing round.
4. Pre – grazing yield is 1600kg DM / ha which is above target but quality is excellent.
5. Grazing out to 4.2cm on average.
6. Ai started on the 13<sup>th</sup> of May, 100% submitted in 5 weeks, Conception rate 50% and six week in-calf rate of 73%.
7. 12.6 tons DM / ha grown to date.

**D. Critical short term actions :**

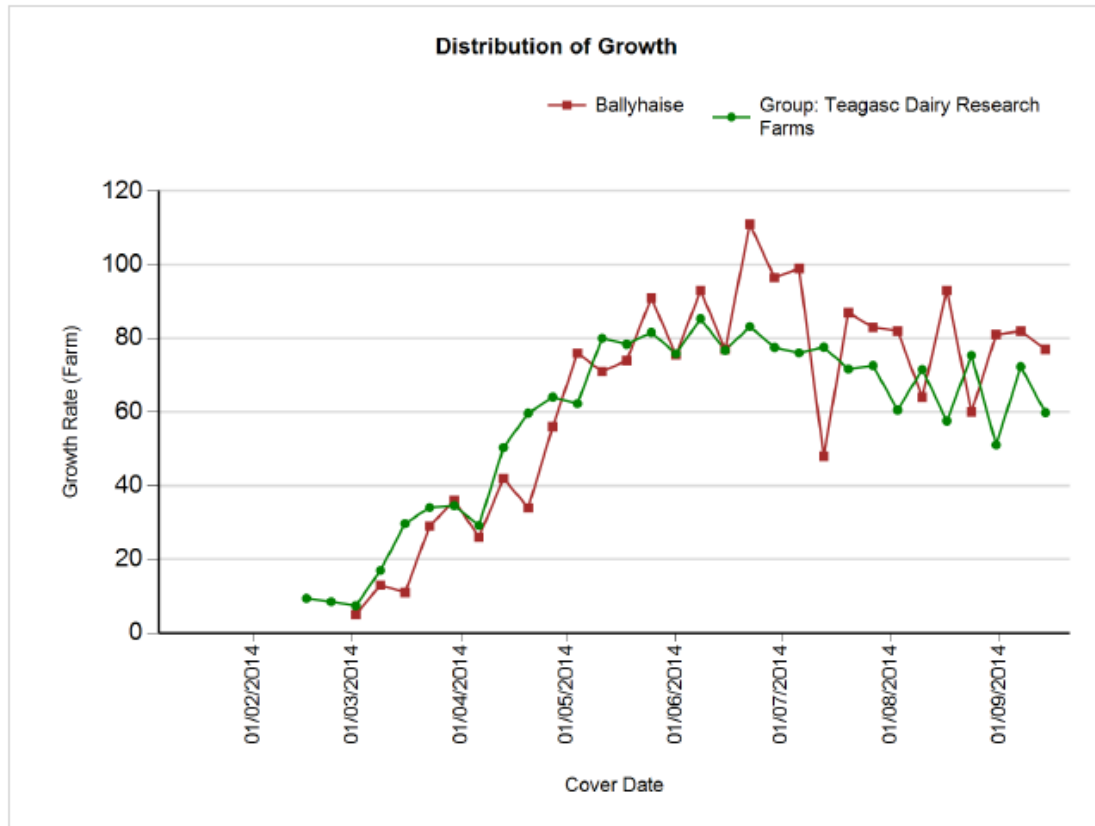
- Removing surpluses as building covers too quickly.
- In- calf heifers need to be moved to fresh grass twice a week to boost growth rates.
- Get last of Nitrogen spread this week.
- Get the wet areas grazed off when conditions are good.

Date : 10/09/2014 Mean calving date	Early 25 <sup>th</sup> Feb		Late 10 <sup>th</sup> March	
	FR	JFX	FR	JFX
<b>Stocking rate (cows/ha)</b>	<b>2.9</b>	<b>2.9</b>	<b>2.9</b>	<b>2.9</b>
Milk yield (kg/cow/day)	16.2	14.0	17.1	14.2
% Fat	4.72	4.89	4.66	4.83
% Protein	3.81	4.06	3.79	4.04
% Lactose	4.50	4.54	4.62	4.54
Milk solids (kg/cow/day)	1.38	1.25	1.45	1.26
Supplement (kg/cow/day)				
Concentrate	1	1	1	1
Silage	0	0	0	0
<b>Cumulative</b>				
Milk yield (kg/cow)	4,356	3,953	4,198	3,814
% Fat	4.35	4.64	4.41	4.48
% Protein	3.40	3.57	3.50	3.59
% Lactose	4.84	4.90	4.83	4.83
Milk solids (kg/cow)	338	325	332	308
Weight	521	478	536	467
Body Condition Score	2.86	2.83	2.86	2.89
Supplement (kg/cow)				
Concentrate		392		351
Silage to milking cows (kg DM/cow)		125		80
Conserved silage (kg DM/cow)		795		745

[www.agresearch.teagasc.ie/moorepark/](http://www.agresearch.teagasc.ie/moorepark/)



## Growth to date compared to average of all Teagasc Research Farms



**Growth To Date – 12.9 tonnes DM / ha.**