

A. Critical Issues

1. 12 hour allocations
2. Maintain target residual (4cm).
3. Improve growth rates in young stock.

B. 2014 Calving date trial

- The herd is split into two separate calving dates
- Early calving group – mean calving date is the 25th of Feb.
- Late calving group – mean calving date is the 10th of March.
- Within each group there are equal numbers of Friesian and crossbred cows.

C. Whole farm situation

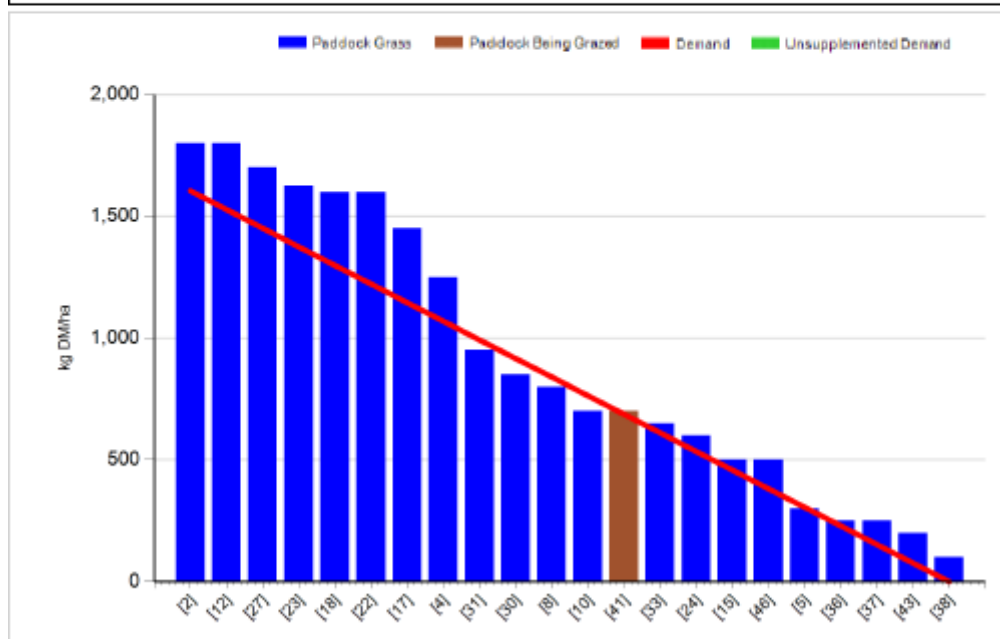
- Soil temperature today is 0 mm.
- Total rainfall for past 7 days is 15.9 mm.
- Calves weighed 168kg average, still behind target but ADG was 0.9 kg / day.
- Calves are being moved onto after grass which should boost growth rates.
- In –calf heifers weighed 1st Sept – 415kg, (ADG 0.37kg / day).
- Milk yield 14.75kg, 4.81% fat, 3.85% protein (1.32kg Ms / cow), SCC 169,000 and TBC 5,000.

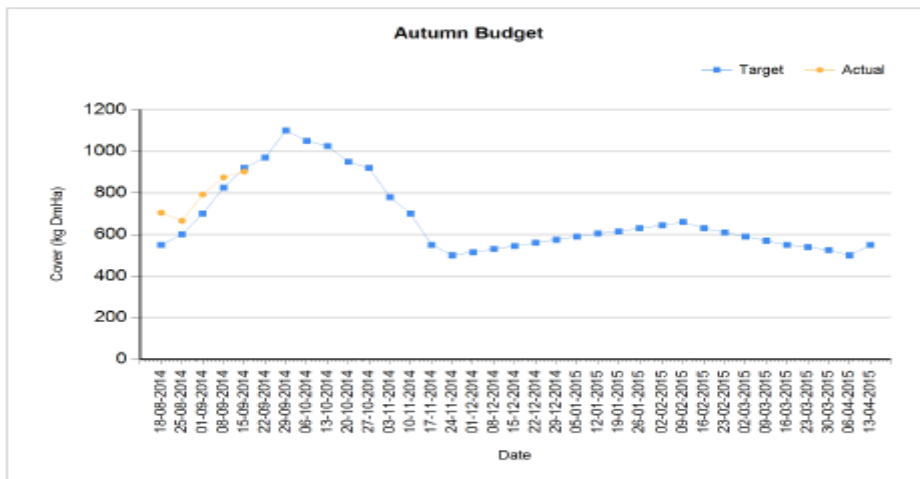
D. Early group

Rotation Length (days):	36	Silage Fed (kg DM/cow):	
Grass Allocation/Cow (kg DM/cow):	15.0	Residual Height (cm):	4.0
No. of Cows:	60		
Concentrate Fed (kg/cow):	2.0		

Cover Parameters

Grass Allocation/LU (kg DM/LU):	15.0	Growth Rate (kg/ha/day):	62
Total Livestock (LU):	60.0	Farm Demand (kg DM/ha/day):	45
Farm Cover (kg DM/ha):	903	Target Pre-grazing yield (kg DM/ha):	1604
Farm Cover (kg DM/LU):	304		
Stocking Rate (LU/ha):	2.97		





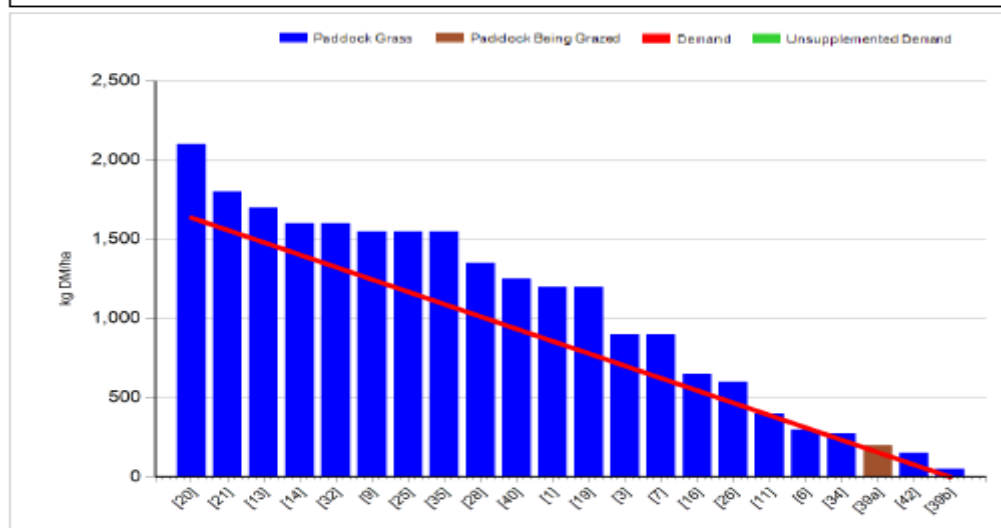
1. Farm cover is 903 kg DM / ha (305kg DM / cow) which is below target according to our autumn budget.
2. Growth rate was 62 kg DM / ha which is well ahead of demand of 45 kg DM / ha. This should allow us to build more cover for the week ahead.
3. Feeding 2kg of concentrate to reduce demand and build covers further.
4. Pre-grazing yield is 1800kg DM / ha and quality is good.
5. DM is 16%.
6. Grazing down to 4.1cm on average. Ground conditions are excellent; we got wet ground grazed off last week.
7. Started AI on the 28th of April, 100% submitted in 6 weeks, conception rate was 50%, six week in calf rate was 75%.
8. 13.1 ton DM / ha grown to date.

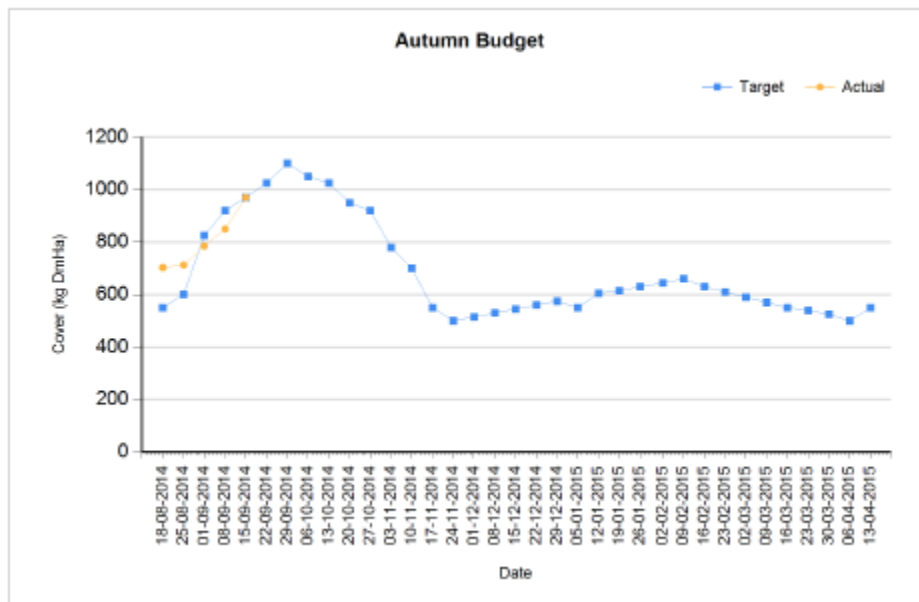
C. Late Group

Rotation Length (days):	36	Silage Fed (kg DM/cow):	0.0
Grass Allocation/Cow (kg DM/cow):	15.0	Residual Height (cm):	3.5
No. of Cows:	59		
Concentrate Fed (kg/cow):	2.0		

Cover Parameters

Grass Allocation/LU (kg DM/LU):	15.0	Growth Rate (kg/ha/day):	58
Total Livestock (LU):	59.0	Farm Demand (kg DM/ha/day):	45
Farm Cover (kg DM/ha):	970	Target Pre-grazing yield (kg DM/ha):	1636
Farm Cover (kg DM/LU):	320		
Stocking Rate (LU/ha):	3.03		





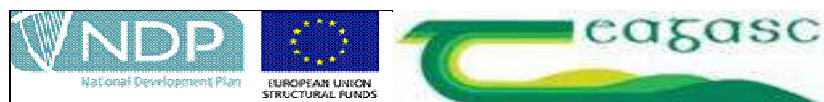
1. Farm cover is 970 kg DM / ha (320kg DM / cow) which is on target.
2. Growth rate was 58kg DM / ha which is above demand of 45kg DM / ha.
3. Pre – grazing yield is 2100kg DM / ha which is above target but quality is excellent.
4. Grazing out to 4.2cm on average.
5. Ai started on the 13th of May, 100% submitted in 5 weeks, Conception rate 50% and six week in-calf rate of 73%.
6. 12.6 tons DM / ha grown to date.

D. Critical short term actions :

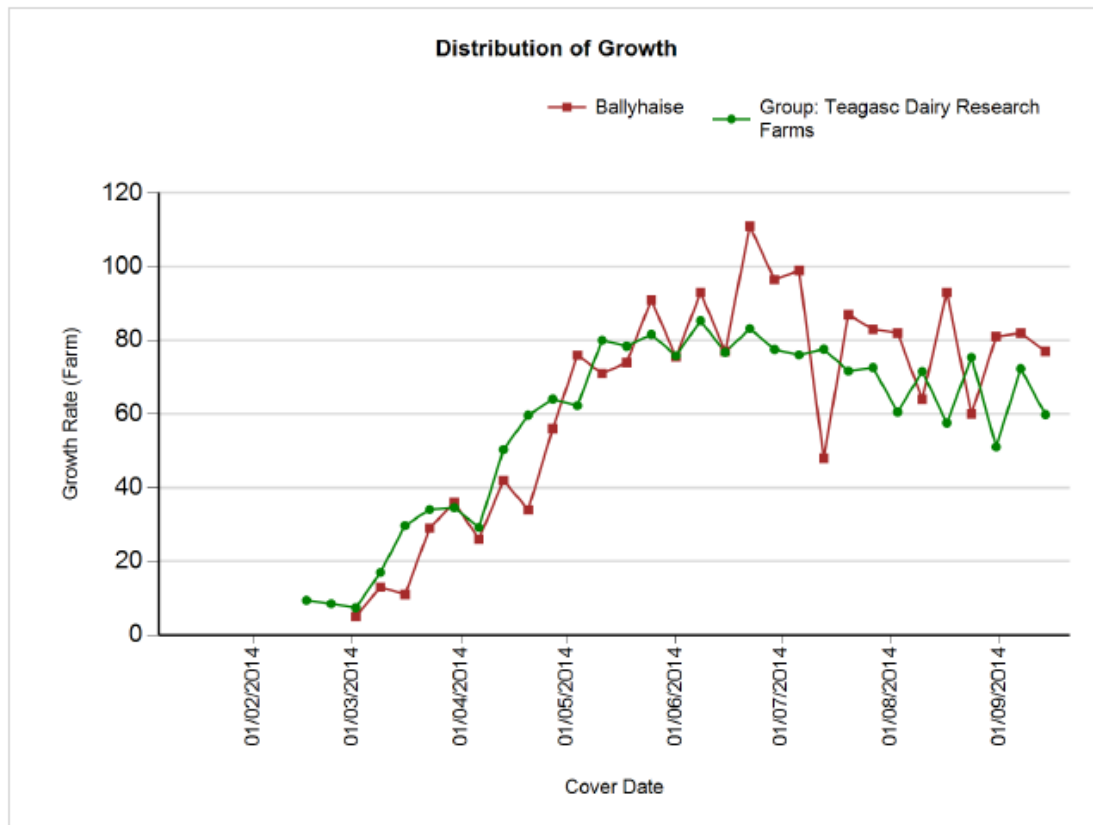
- In- calf heifers need to be moved to fresh grass twice a week to boost growth rates.
- Introduce 2kg of concentrates to help build covers.

Date : 10/09/2014 Mean calving date	Early 25 th Feb		Late 10 th March	
	FR	JFX	FR	JFX
Stocking rate (cows/ha)	2.9	2.9	2.9	2.9
Milk yield (kg/cow/day)	16.2	14.0	17.1	14.2
% Fat	4.72	4.89	4.66	4.83
% Protein	3.81	4.06	3.79	4.04
% Lactose	4.50	4.54	4.62	4.54
Milk solids (kg/cow/day)	1.38	1.25	1.45	1.26
Supplement (kg/cow/day)				
Concentrate	1	1	1	1
Silage	0	0	0	0
Cumulative				
Milk yield (kg/cow)	4,356	3,953	4,198	3,814
% Fat	4.35	4.64	4.41	4.48
% Protein	3.40	3.57	3.50	3.59
% Lactose	4.84	4.90	4.83	4.83
Milk solids (kg/cow)	338	325	332	308
Weight	521	478	536	467
Body Condition Score	2.86	2.83	2.86	2.89
Supplement (kg/cow)				
Concentrate		392		351
Silage to milking cows (kg DM/cow)		125		80
Conserved silage (kg DM/cow)		795		745

www.agresearch.teagasc.ie/moorepark/



Growth to date compared to average of all Teagasc Research Farms



Growth To Date – 13.3 tonnes DM / ha.