

A. Critical Issues

1. 12 hour allocations
2. Maintain target residual (4cm).
3. Meet target for autumn planner.

B. 2014 Calving date trial

- The herd is split into two separate calving dates
- Early calving group – mean calving date is the 25th of Feb.
- Late calving group – mean calving date is the 10th of March.
- Within each group there are equal numbers of Friesian and crossbred cows.

C. Whole farm situation

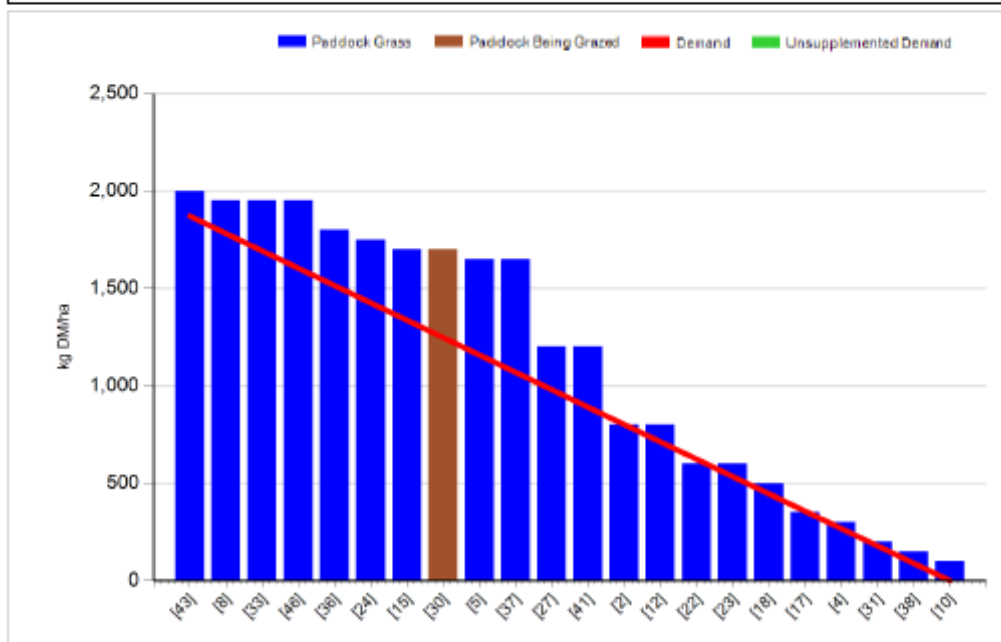
- Soil temperature today is 9.3°C.
- Total rainfall for past 7 days is 21 mm.
- Cows 10% empty (12 weeks)
- Heifers 8% empty (8 weeks)
- Milk yield 14.5 kg, 4.74% fat, 3.97% protein (1.26kg Ms / cow), SCC 165,000 and TBC 5,000.

D. Early group

Rotation Length (days):	42	Silage Fed (kg DM/cow):	
Grass Allocation/Cow (kg DM/cow):	15.0	Residual Height (cm):	4.0
No. of Cows:	60		
Concentrate Fed (kg/cow):	2.0		

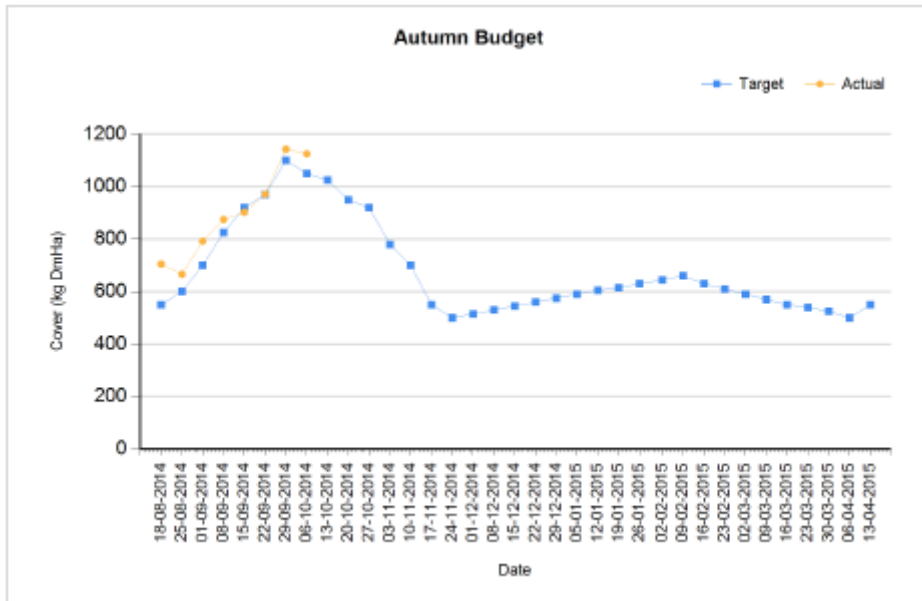
Cover Parameters

Grass Allocation/LU (kg DM/LU):	15.0	Growth Rate (kg/ha/day):	42
Total Livestock (LU):	60.0	Farm Demand (kg DM/ha/day):	45
Farm Cover (kg DM/ha):	1125	Target Pre-grazing yield (kg DM/ha):	1871
Farm Cover (kg DM/LU):	379		
Stocking Rate (LU/ha):	2.97		



1. Farm cover is 1125 kg DM / ha (379kg DM / cow) which is on target according to our autumn budget.
2. Growth rate was 42 kg DM / ha and demand is 45 kg DM / ha. This is a massive drop from last week's growth of 65kg DM / ha and is driven by the drop in soil temperature.

- Started to close paddocks from the 1st of October, target is to have 60% grazed by the 25th of October. We have 20% closed to date because we grazed some lower covers.



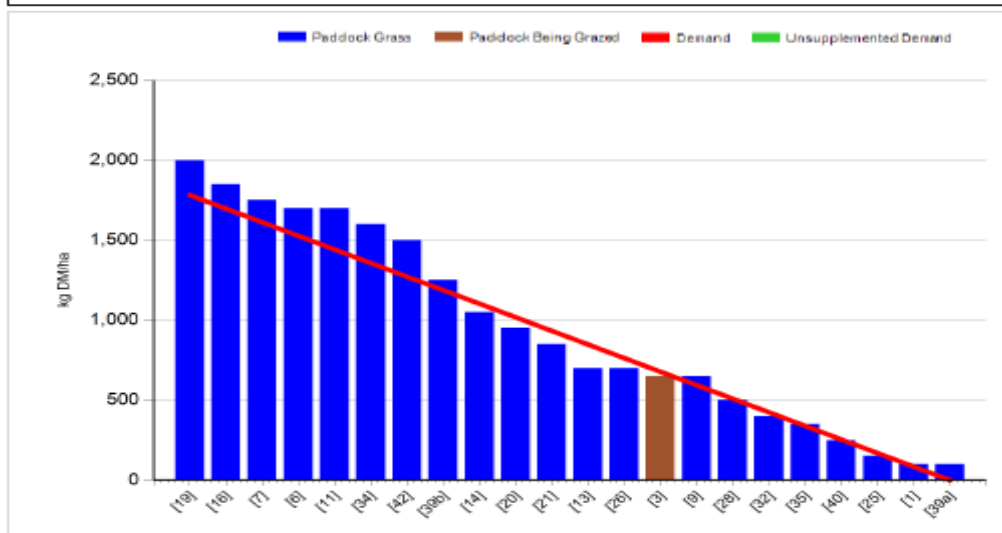
- Feeding 2kg of concentrate.
- Pre-grazing yield is 2000kg DM / ha and quality is good.
- DM is 14%.
- Grazing down to 4.2cm on average. Ground conditions are good but another 30 – 40 mm of rain will change this quickly on our heavier ground.
- Scanning results – 10% empty (12 weeks breeding), 75% in-calf in six weeks.
- 14.9 tons DM / ha grown to date.

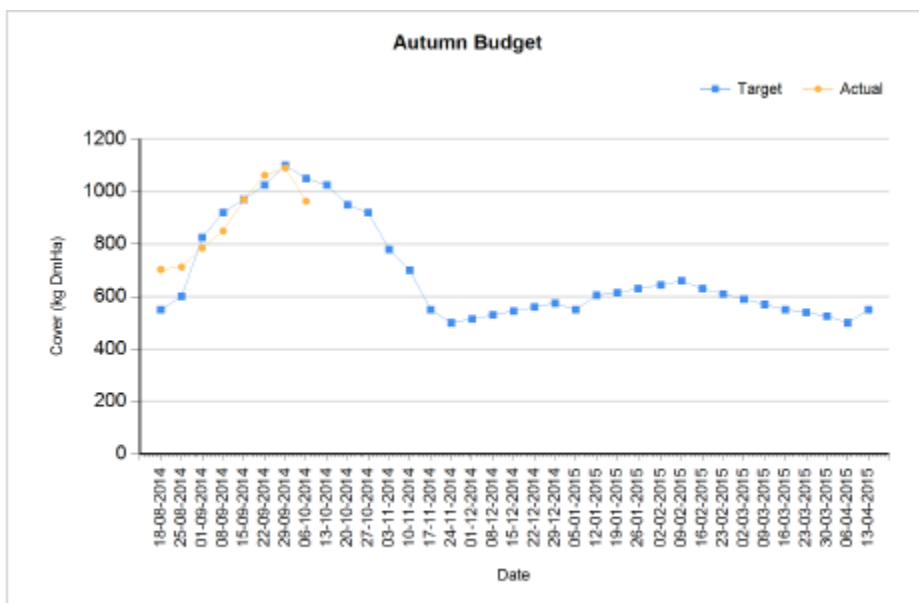
C. Late Group

Rotation Length (days):	42	Silage Fed (kg DM/cow):	0.0
Grass Allocation/Cow (kg DM/cow):	14.0	Residual Height (cm):	3.5
No. of Cows:	50		
Concentrate Fed (kg/cow):	3.0		

Cover Parameters

Grass Allocation/LU (kg DM/LU):	14.0	Growth Rate (kg/ha/day):	31
Total Livestock (LU):	50.0	Farm Demand (kg DM/ha/day):	42
Farm Cover (kg DM/ha):	963	Target Pre-grazing yield (kg DM/ha):	1782
Farm Cover (kg DM/LU):	318		
Stocking Rate (LU/ha):	3.03		





1. Farm cover is 963 kg DM / ha (318kg DM / cow) which is below target.
2. Growth rate was 31kg DM / ha which is below demand of 42kg DM / ha. We have increased concentrate feeding to 3kg but we will hold off on feeding silage this week as we have to get enough area closed.
3. Pre – grazing yield is 2000kg DM / ha.
4. Starting to close paddocks from the 1st of October, target is to have 60% grazed by the 25th of October. Have 18% closed which on target.
5. Grazing out to 4.2cm on average.
6. Scanning results – 10% empty (12 weeks breeding), 73% in-calf in six weeks.
7. 14.3 tons DM / ha grown to date.

D. Critical short term actions :

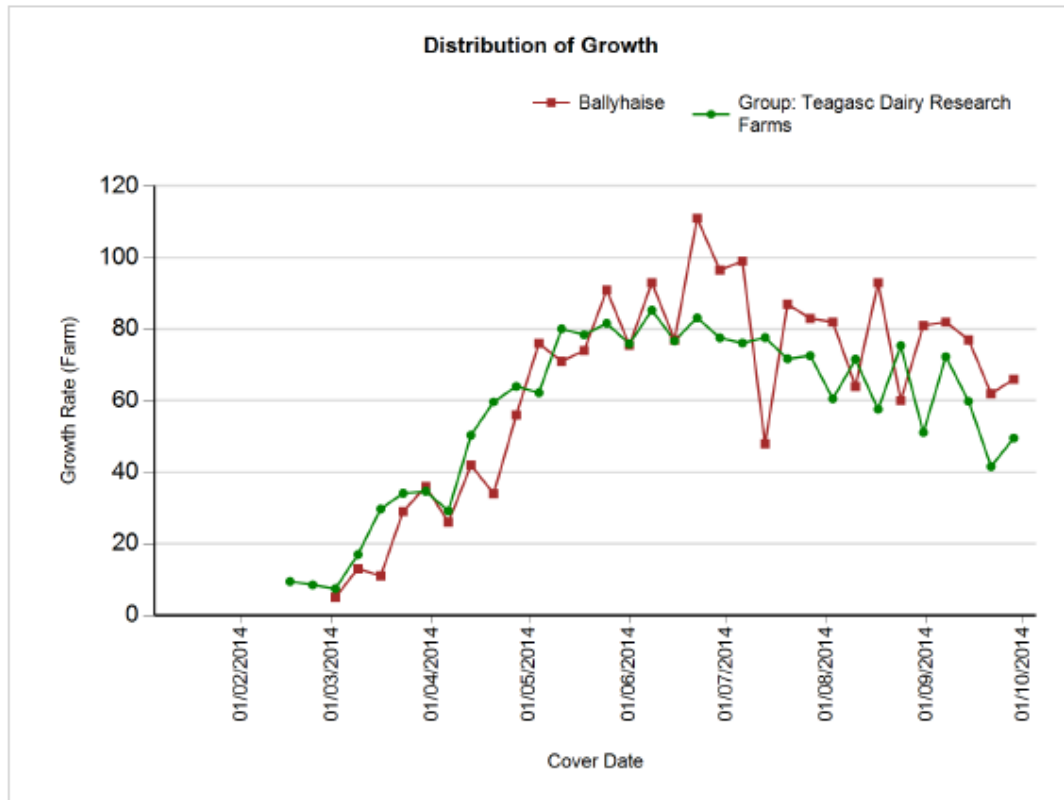
- Started closing paddocks on 1st of October.
- Follow cows with watery slurry.
- Will need to graze 1 paddock of 1200kg DM this week to meet autumn plan target.
- Will have to graze 1.1 ha per day average for next two weeks.

Date : 05/10/2014 Mean calving date	Early 25 th Feb		Late 10 th March	
	FR	JFX	FR	JFX
Stocking rate (cows/ha)	2.9	2.9	2.9	2.9
Milk yield (kg/cow/day)	15.3	13.6	17.2	14.1
% Fat	4.63	5.31	4.62	4.95
% Protein	3.84	4.10	3.74	3.98
% Lactose	4.63	4.66	4.53	4.47
Milk solids (kg/cow/day)	1.30	1.28	1.44	1.26
Supplement (kg/cow/day)				
Concentrate	2	2	2	2
Silage	0	0	0	0
Cumulative				
Milk yield (kg/cow)	4,795	4,351	4,677	4,213
% Fat	4.38	4.70	4.43	4.52
% Protein	3.44	3.62	3.53	3.63
% Lactose	4.83	4.88	4.80	4.8
Milk solids (kg/cow)	375	362	372	343
Weight	521	478	536	467
Body Condition Score	2.91	2.75	2.76	2.83
Supplement (kg/cow)				
Concentrate		434		395
Silage to milking cows (kg DM/cow)		125		80
Conserved silage (kg DM/cow)		795		745

www.agresearch.teagasc.ie/moorepark/



Growth to date compared to average of all Teagasc Research Farms



Growth To Date – 14.6 tonnes DM / ha.