

**A. Critical Issues**

1. 12 hour allocations
2. Maintain target residual (4cm).
3. Meet target for autumn planner.

**B. 2014 Calving date trial**

- The herd is split into two separate calving dates
- Early calving group – mean calving date is the 25<sup>th</sup> of Feb.
- Late calving group – mean calving date is the 10<sup>th</sup> of March.
- Within each group there are equal numbers of Friesian and crossbred cows.

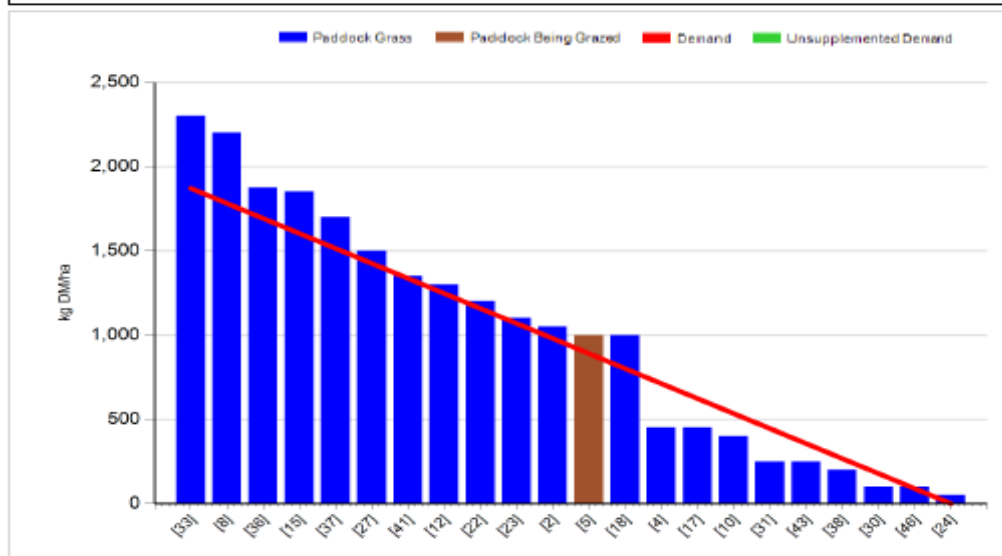
**C. Whole farm situation**

- Soil temperature today is 8.8°C.
- Total rainfall for past 7 days is 2 mm.
- Cows 10% empty (12 weeks)
- Heifers 8% empty (8 weeks)
- Milk yield 13.2 kg, 4.99% fat, 4.0% protein (1.18kg Ms / cow), SCC 156,000 and TBC 5,000.

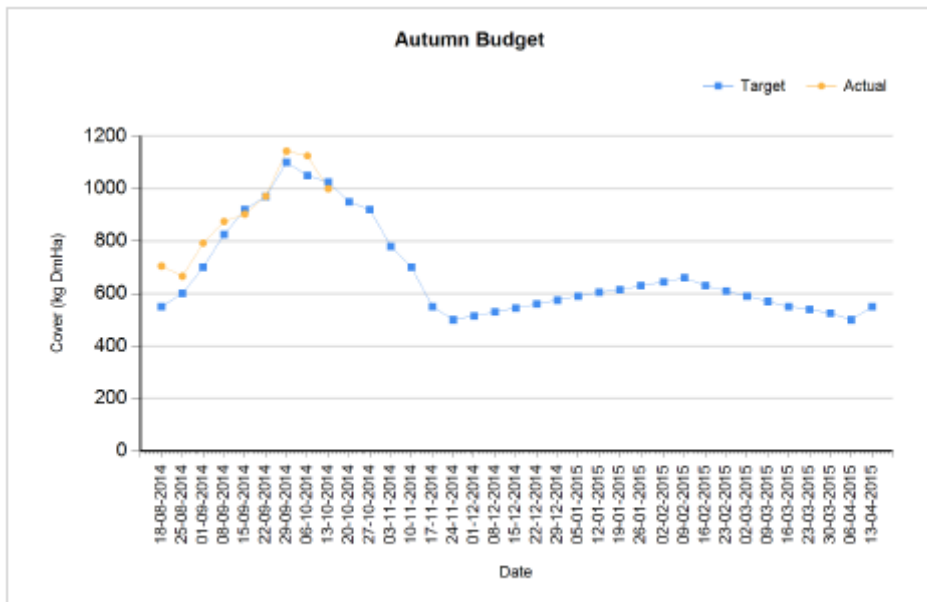
**D. Early group**

Rotation Length (days):	42	Silage Fed (kg DM/cow):	
Grass Allocation/Cow (kg DM/cow):	15.0	Residual Height (cm):	4.0
No. of Cows:	60		
Concentrate Fed (kg/cow):	2.0		

<b>Cover Parameters</b>			
Grass Allocation/LU (kg DM/LU):	15.0	Growth Rate (kg/ha/day):	29
Total Livestock (LU):	60.0	Farm Demand (kg DM/ha/day):	45
Farm Cover (kg DM/ha):	1000	Target Pre-grazing yield (kg DM/ha):	1871
Farm Cover (kg DM/LU):	337		
Stocking Rate (LU/ha):	2.97		



1. Farm cover is 1000 kg DM / ha (337kg DM / cow) which is on target according to our autumn budget.
2. Growth rate was 30 kg DM / ha and demand is 45 kg DM / ha so cover will drop more this week.
3. Started to close paddocks from the 1st of October, target is to have 60% grazed by the 25<sup>th</sup> of October. We have 35% closed to date because we grazed some lower covers, we will struggle to hit the target so we have decided to maintain feed levels at 2kg.



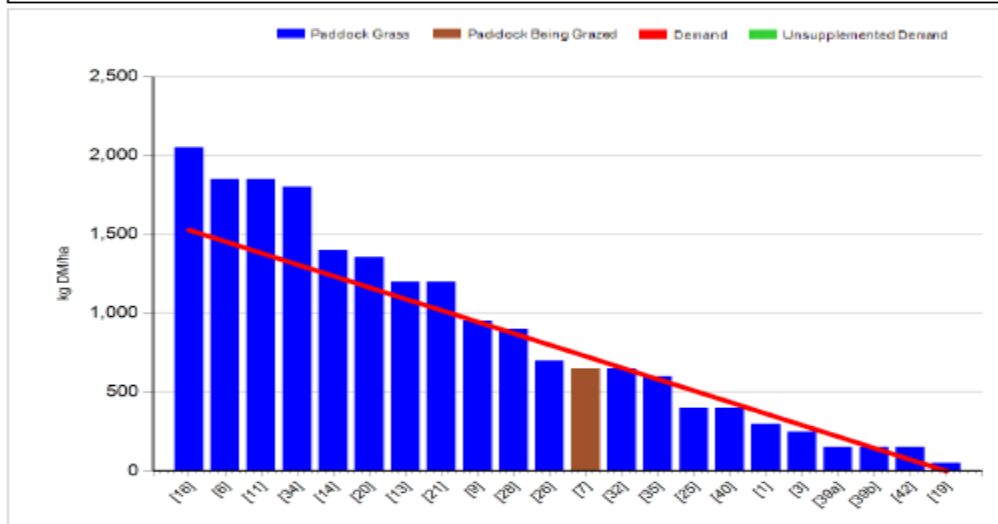
4. Feeding 2kg of concentrate.
5. Pre-grazing yield is 2400kg DM / ha, these are on the strong side but we had to skip into lighter covers to catch up on area grazed.
6. DM is 15%.
7. Grazing down to 4.0cm on average. Ground conditions are good but another 30 – 40 mm of rain will change this quickly on our heavier ground.
8. Scanning results – 10% empty (12 weeks breeding), 75% in-calf in six weeks.
9. 15.2 tons DM / ha grown to date.

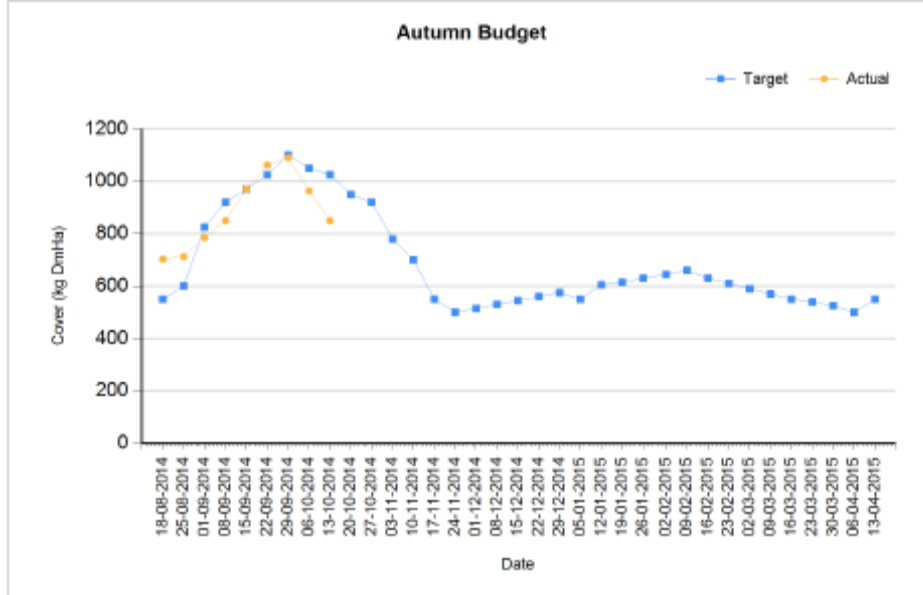
### C. Late Group

Rotation Length (days):	42	Silage Fed (kg DM/cow):	0.0
Grass Allocation/Cow (kg DM/cow):	12.0	Residual Height (cm):	3.5
No. of Cows:	59		
Concentrate Fed (kg/cow):	4.0		

#### Cover Parameters

Grass Allocation/LU (kg DM/LU):	12.0	Growth Rate (kg/ha/day):	30
Total Livestock (LU):	59.0	Farm Demand (kg DM/ha/day):	36
Farm Cover (kg DM/ha):	850	Target Pre-grazing yield (kg DM/ha):	1527
Farm Cover (kg DM/LU):	281		
Stocking Rate (LU/ha):	3.03		





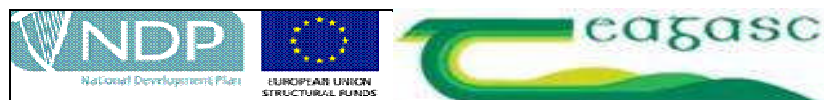
1. Farm cover is 850 kg DM / ha (281kg DM / cow) which is below target.
2. Growth rate was 30kg DM / ha which is below demand of 36kg DM / ha. We have increased concentrate feeding to 4kg but we will hold off on feeding silage this week as we have to get enough area closed.
3. Pre – grazing yield is 2000kg DM / ha.
4. Starting to close paddocks from the 1st of October, target is to have 60% grazed by the 25<sup>th</sup> of October. Have 35% closed which on target.
5. Grazing out to 4.2cm on average.
6. Scanning results – 10% empty (12 weeks breeding), 73% in-calf in six weeks.
7. 14.6 tons DM / ha grown to date.

**D. Critical short term actions :**

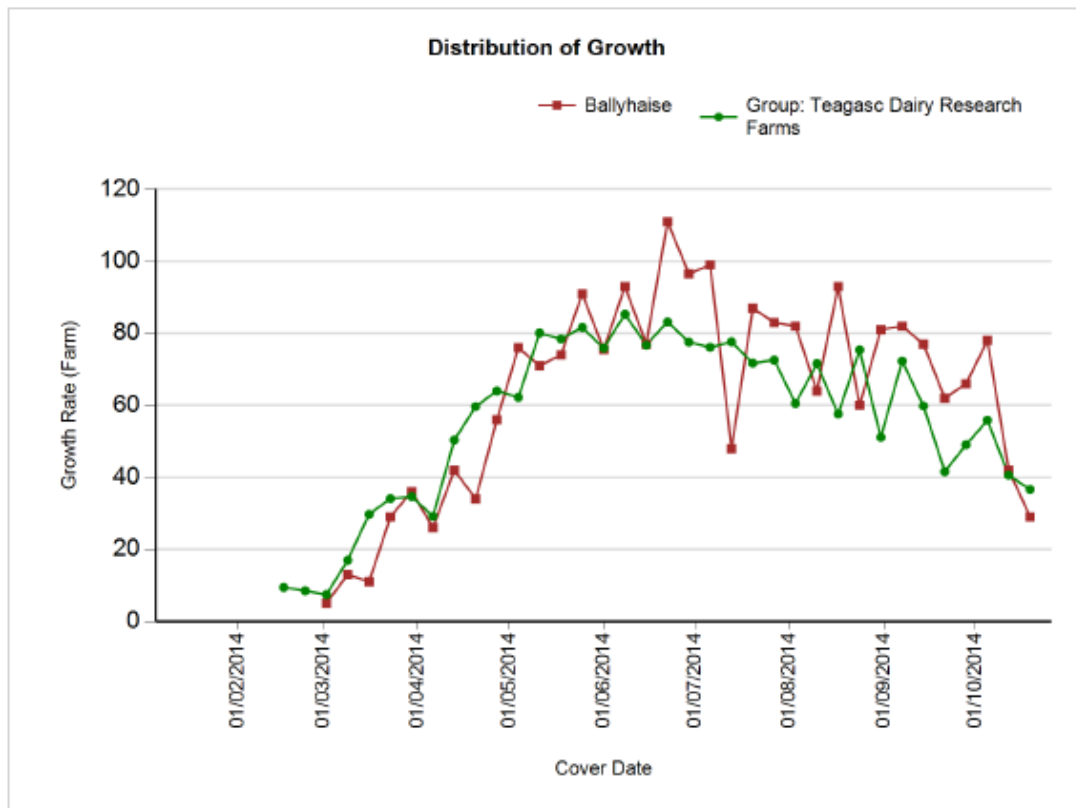
- Started closing paddocks on 1<sup>st</sup> of October.
- Will need to graze 1 paddock of 1200kg DM this week to meet autumn plan target.
- Will have to graze 1.1 ha per day average for next two weeks.

Date : 12/10/2014 Mean calving date	Early 25 <sup>th</sup> Feb		Late 10 <sup>th</sup> March	
	FR	JFX	FR	JFX
<b>Stocking rate (cows/ha)</b>	<b>2.9</b>	<b>2.9</b>	<b>2.9</b>	<b>2.9</b>
Milk yield (kg/cow/day)	16.3	13.9	16.5	14.3
% Fat	4.71	5.10	4.65	5.06
% Protein	4.02	4.15	3.93	4.14
% Lactose	4.72	4.72	4.67	4.60
Milk solids (kg/cow/day)	1.43	1.29	1.41	1.31
Supplement (kg/cow/day)				
Concentrate	2	2	2	2
Silage	0	0	0	0
<b>Cumulative</b>				
Milk yield (kg/cow)	4,909	4,449	4,792	4,312
% Fat	4.39	4.71	4.43	4.54
% Protein	3.45	3.63	3.54	3.64
% Lactose	4.83	4.87	4.80	4.79
Milk solids (kg/cow)	385	371	382	353
Weight	521	478	536	467
Body Condition Score	2.90	2.85	2.76	2.83
Supplement (kg/cow)				
Concentrate		448		409
Silage to milking cows (kg DM/cow)		125		80
Conserved silage (kg DM/cow)		795		745

[www.agresearch.teagasc.ie/moorepark/](http://www.agresearch.teagasc.ie/moorepark/)



## Growth to date compared to average of all Teagasc Research Farms



**Growth To Date – 14.8 tonnes DM / ha.**