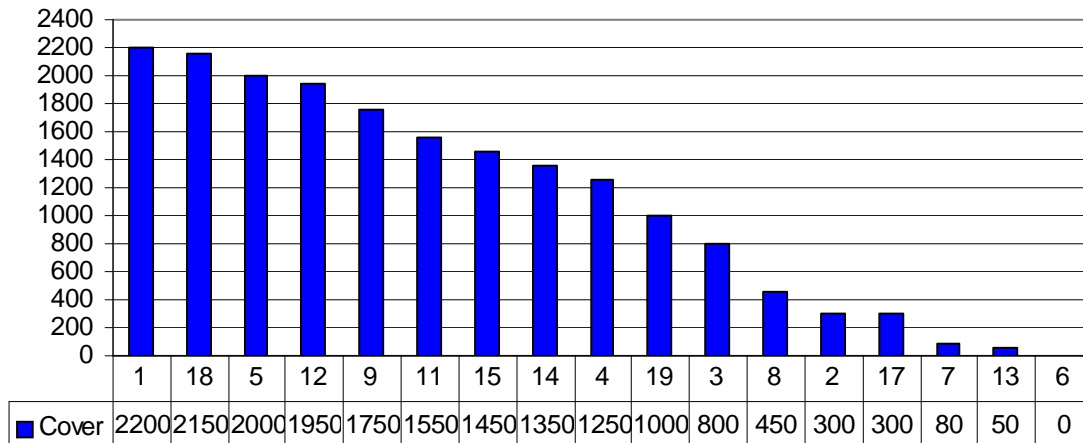


Curtins Farm Walk Notes Tuesday 30-09-08

1. Farm Feed Wedge

Farm Feed Wedge 29/09/08 1104kg DM/ha (385/cow)



2. Growth over the past 7 days was 64kg DM/ha/day
3. Mean soil temperature today is 12.3 deg Celsius, total rainfall for the past 7 days was 1.8mm
4. Average milk yield is 12.2kg at 4.51% fat and 3.90% protein (1.03kg MS/cow), SCC 326k, Thermoduric N/D, TBC 22
5. Total milk solids supply to September 1st is up 3.62% on 2007 levels (42,150 vs. 40678 kg MS; equivalent to 302 kg MS/cow)
6. Fertilizer application for season is 246 kg N per hectare
7. Pasture growth to date is 4% ahead of 2007 levels (12.8 tons vs. 12.3tons) and approximately 570kg DM of winter feed per cow in excess of requirements.
8. Critical Short-term Actions:
 - Post grazing height on last grazed paddock is 3.4cm
 - Rotation length is currently 42 days
 - Concentrate supplementation is zero
 - Paddocks are dusted with cal-mag as an aid in the prevention of grass tetany
 - After removing paddock 6 (surplus removed as bales) farm is on target as per Autumn grass budget targets (below);

| Week | Grass Cover | | Expected Growth (kg dm/day) | Grass Allocation kg DM/cow/day |
|--------|-------------|------------|--------------------------------|-----------------------------------|
| | (kg DM/ha) | (kg DM/LU) | | |
| 13-Sep | 1027 | 342 | 56.1 | 18 |
| 20-Sep | 1046 | 349 | 54.0 | 17 |
| 27-Sep | 1072 | 383 | 53.2 | 17 |
| 04-Oct | 1110 | 396 | 46.0 | 16 |

**A comparison of Holstein-Friesian genotypes under two pasture-based production systems*

| Group | Milk SI | Fertility SI | Calving SI | Health SI | Beef SI | EBI |
|------------------|----------------|---------------------|-------------------|------------------|----------------|------------|
| | (€) | (€) | (€) | (€) | (€) | (€) |
| NA – Low | 36 | 12 | 7 | -2 | -7 | 46 |
| NA – High | 41 | 41 | 13 | 0 | -4 | 90 |
| NZ – High | 41 | 50 | 14 | -4 | -18 | 84 |

**This table was printed in error in previous weeks.*

**Milk Production Data as of Sunday 24/08/08*

| Group | NA- Low | | NA - High | | NZ - High | |
|---------------------------------------|----------------|------|------------------|------|------------------|------|
| Daily Concentrate (kg/cow/day) | 0 | 3 | 0 | 3 | 0 | 3 |
| Total Concentrate (kg/cow) | 187 | 596 | 178 | 591 | 173 | 631 |
| Daily Milk Yield (kg/cow/day) | 14.35 | 16.6 | 13.6 | 16.7 | 14.5 | 16.3 |
| Fat (%) | 4.46 | 4.74 | 4.85 | 4.71 | 4.95 | 4.99 |
| Protein (%) | 3.78 | 3.59 | 3.69 | 3.70 | 3.79 | 3.87 |
| Lactose (%) | 4.51 | 4.51 | 4.38 | 4.46 | 4.51 | 4.61 |
| Milk Solids (kg/cow) | 1.18 | 1.37 | 1.15 | 1.39 | 1.26 | 1.44 |
| Cum. Milk Solids (kg/cow) | 280 | 295 | 293 | 312 | 301 | 324 |
| Bodyweight (kg) | 534 | 562 | 525 | 548 | 519 | 535 |
| BCS | 2.58 | 2.75 | 2.60 | 2.61 | 2.70 | 2.80 |

Provisional Reproductive Performance

| | | | |
|---------------------------|----|----|----|
| 24day Submission rate (%) | 70 | 93 | 83 |
| 42 Day In-calf Rate % | 50 | 57 | 67 |
| 14 Week Empty Rate % | 20 | 22 | 8 |

**NB: These are raw data with unbalanced groups that have not been statistically analysed and, therefore, no definite conclusions can be drawn from them. Reproductive performance data is subject to final scanning confirmation in early October.*