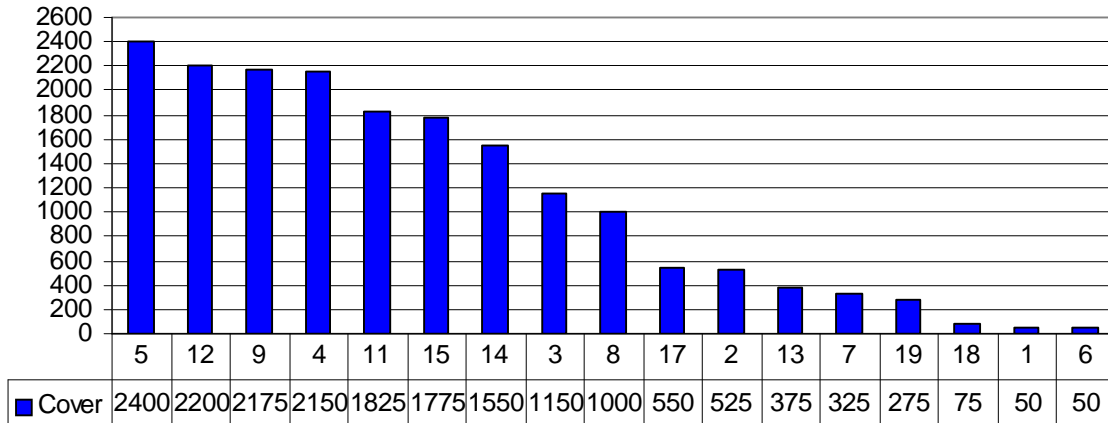


## Curtins Farm Walk Notes Tuesday 06-10-08

### 1. Farm Feed Wedge

**Farm Feed Wedge 6/10/08 1121kg DM/ha (391/cow)**



2. Growth over the past 7 days was 51kg DM/ha/day
3. Mean soil temperature today is 10.9deg Celsius, total rainfall for the past 7 days was 40.1mm
4. Average milk yield is 12kg at 4.99% fat and 4.02% protein (1.08kg MS/cow), SCC 286k, Thermoduric 430, TBC 22
5. Total milk solids supply to October 1<sup>st</sup> is up 3.32% on 2007 levels (47,956kg vs. 46415 kg MS; equivalent to 343 kg MS/cow)
6. Fertilizer application for season is 246 kg N per hectare
7. Pasture growth to the 6<sup>th</sup> of October is 4.33% ahead of 2007 levels (13.96 tons vs. 13.38 tons) and approximately 641kg DM of winter feed per cow in excess of requirements.
8. Critical Short-term Actions:
  - Post grazing height on last grazed paddock is 3.8cm
  - Rotation length is currently 48 days
  - Concentrate supplementation is zero
  - Paddocks are dusted with cal-mag as an aid in the prevention of grass tetany
  - Farm is on target as per Autumn grass budget targets (below);

Week	Cover (kg DM/ha)	Cover per LU	Growth (kg DM/day)	Cow diet (kg DM)
04-Oct	1110	397	46.0	16
11-Oct	1118	399	39.9	16
18-Oct	1084	387	37.0	15
25-Oct	1048	374	35.0	15
01-Nov	999	357	33.0	15

*\*A comparison of Holstein-Friesian genotypes under two pasture-based production systems*

Group	Milk SI (€)	Fertility SI (€)	Calving SI (€)	Health SI (€)	Beef SI (€)	EBI (€)
NA – Low	36	12	7	-2	-7	46
NA – High	41	41	13	0	-4	90
NZ – High	41	50	14	-4	-18	84

*\*This table was printed in error in previous weeks.*

*\*Milk Production Data as of Sunday 28/09/08*

Group	NA- Low	NA - High	NZ - High
Daily Concentrate (kg/cow/day)	0	3	0
Total Concentrate (kg/cow)	135	722	136
Daily Milk Yield (kg/cow/day)	12.2	15.3	13.0
Fat (%)	4.17	4.05	4.23
Protein (%)	4.02	3.84	3.95
Lactose (%)	4.46	4.52	4.41
Milk Solids (kg/cow)	0.99	1.19	1.06
Cum. Milk Solids (kg/cow)	318.1	347.0	330.4
Bodyweight (kg)	540	548	538
BCS	2.64	2.75	2.71

**Provisional Reproductive Performance**

24day Submission rate (%)	70	93	83
42 Day In-calf Rate %	50	57	67
14 Week Empty Rate %	20	22	8

*\*NB: These are raw data with unbalanced groups that have not been statistically analysed and, therefore, no definite conclusions can be drawn from them. Reproductive performance data is subject to final scanning confirmation in early October.*