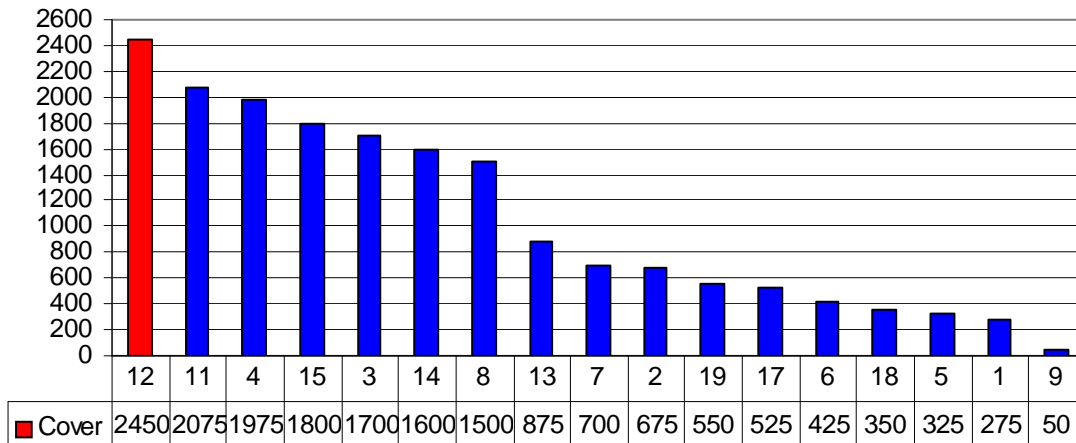


## Curtins Farm Walk Notes Tuesday 14-10-08

### 1. Farm Feed Wedge

#### Farm Feed Wedge 13/10/08 1036kg DM/ha (361/cow)



2. Growth over the past 7 days was 48kg DM/ha/day
3. Mean soil temperature today is 12deg Celsius, total rainfall for the past 7 days was 18.9mm
4. Average milk yield is 11.2kg at 4.53% fat and 4.03% protein (0.96kg MS/cow), SCC 305k, Thermoduric 430, TBC 22
5. Total milk solids supply to October 1<sup>st</sup> is up 3.32% on 2007 levels (47,956kg vs. 46415 kg MS; equivalent to 343 kg MS/cow)
6. Fertilizer application for season is 246 kg N per hectare
7. Pasture growth to the 6<sup>th</sup> of October is 4.33% ahead of 2007 levels (13.96 tons vs. 13.38 tons) and approximately 641kg DM of winter feed per cow in excess of requirements.
8. Critical Short-term Actions:
  - Paddock 12 has been skipped for the moment. By skipping this paddock we are speeding up the rotation in order to have 60% of the farm grazed and closed by the 3<sup>rd</sup> of November. Once 60% has been closed we will return to graze out paddock 12.
  - Post grazing height on last grazed paddock is 3.7cm
  - Rotation length is currently 45 days
  - Concentrate supplementation is zero
  - Paddocks are dusted with cal-mag as an aid in the prevention of grass tetany

- Farm is on target as per Autumn grass budget targets (below);

| Week   | Cover (kg DM/ha) | Cover per LU | Growth (kg DM/day) | Cow diet (kg DM) |
|--------|------------------|--------------|--------------------|------------------|
| 04-Oct | 1110             | 397          | 46.0               | 16               |
| 11-Oct | 1118             | 399          | 39.9               | 16               |
| 18-Oct | 1084             | 387          | 37.0               | 15               |
| 25-Oct | 1048             | 374          | 35.0               | 15               |
| 01-Nov | 999              | 357          | 33.0               | 15               |

*\*A comparison of Holstein-Friesian genotypes under two pasture-based production systems*

| Group     | Milk SI<br>(€) | Fertility SI<br>(€) | Calving SI<br>(€) | Health SI<br>(€) | Beef SI<br>(€) | EBI<br>(€) |
|-----------|----------------|---------------------|-------------------|------------------|----------------|------------|
| NA – Low  | 36             | 12                  | 7                 | -2               | -7             | 46         |
| NA – High | 41             | 41                  | 13                | 0                | -4             | 90         |
| NZ – High | 41             | 50                  | 14                | -4               | -18            | 84         |

*\*This table was printed in error in previous weeks.*

*\*Milk Production Data as of Sunday 28/09/08*

| Group                          | NA- Low     | NA - High   | NZ - High   |
|--------------------------------|-------------|-------------|-------------|
| Daily Concentrate (kg/cow/day) | 0 3         | 0 3         | 0 3         |
| Total Concentrate (kg/cow)     | 135 722     | 136 710     | 149 750     |
| Daily Milk Yield (kg/cow/day)  | 12.2 15.3   | 13.0 16.2   | 12.3 13.6   |
| Fat (%)                        | 4.17 4.05   | 4.23 4.16   | 4.82 4.94   |
| Protein (%)                    | 4.02 3.84   | 3.95 3.91   | 4.21 4.24   |
| Lactose (%)                    | 4.46 4.52   | 4.41 4.52   | 4.42 4.54   |
| Milk Solids (kg/cow)           | 0.99 1.19   | 1.06 1.29   | 1.10 1.24   |
| Cum. Milk Solids (kg/cow)      | 318.1 347.0 | 330.4 361.3 | 341.3 379.0 |
| Bodyweight (kg)                | 540 548     | 538 568     | 523 543     |
| BCS                            | 2.64 2.75   | 2.71 2.88   | 2.91 2.93   |

#### Provisional Reproductive Performance

|                           |    |    |    |
|---------------------------|----|----|----|
| 24day Submission rate (%) | 70 | 93 | 83 |
| 42 Day In-calf Rate %     | 50 | 57 | 67 |
| 14 Week Empty Rate %      | 20 | 22 | 8  |

*\*NB: These are raw data with unbalanced groups that have not been statistically analysed and, therefore, no definite conclusions can be drawn from them. Reproductive performance data is subject to final scanning confirmation in early October.*

