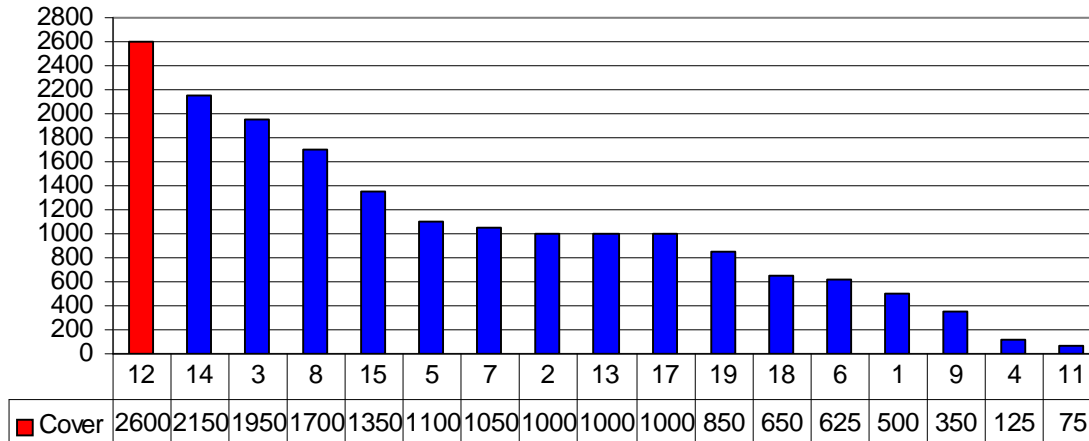


## Curtins Farm Walk Notes Tuesday 21-10-08

### 1. Farm Feed Wedge

**Farm Feed Wedge 20/10/08 1038kg DM/ha (362/cow)**



2. Growth over the past 7 days was 46kg DM/ha/day
3. Mean soil temperature today is 10.7deg Celsius, total rainfall for the past 7 days was 19.8mm
4. Average milk yield is 10.3kg at 4.89% fat and 4.07% protein (0.92kg MS/cow), SCC 280k, Thermoduric N/D, TBC 22
5. Total milk solids supply to October 1<sup>st</sup> is up 3.32% on 2007 levels (47,956kg vs. 46415 kg MS; equivalent to 343 kg MS/cow)
6. Fertilizer application for season is 246 kg N per hectare
7. Pasture growth to the 21<sup>st</sup> of October is 4.72% ahead of 2007 levels (14.61 tons vs. 13.92 tons) and approximately 641kg DM of winter feed per cow in excess of requirements.
8. Critical Short-term Actions:
  - Paddock 12 has been skipped for the moment. By skipping this paddock we are speeding up the rotation in order to have 60% of the farm grazed and closed by the 3<sup>rd</sup> of November. We plan to graze this block early next week with replacement heifers.
  - Post grazing height on last grazed paddock is 3.56cm
  - Rotation length is currently 51 days
  - Concentrate supplementation is zero
  - Paddocks are dusted with cal-mag as an aid in the prevention of grass tetany

- Farm is on target as per Autumn grass budget targets (below);

Week	Cover (kg DM/ha)	Cover per LU	Growth (kg DM/day)	Cow diet (kg DM)
04-Oct	1110	397	46.0	16
11-Oct	1118	399	39.9	16
18-Oct	1084	387	37.0	15
25-Oct	1048	374	35.0	15
01-Nov	999	357	33.0	15

*\*A comparison of Holstein-Friesian genotypes under two pasture-based production systems*

Group	Milk SI (€)	Fertility SI (€)	Calving SI (€)	Health SI (€)	Beef SI (€)	EBI (€)
NA – Low	36	12	7	-2	-7	46
NA – High	41	41	13	0	-4	90
NZ – High	41	50	14	-4	-18	84

*\*This table was printed in error in previous weeks.*

*\*Milk Production Data as of Sunday 28/09/08*

Group	NA- Low	NA - High	NZ - High
Daily Concentrate (kg/cow/day)	0 3	0 3	0 3
Total Concentrate (kg/cow)	135 722	136 710	149 750
Daily Milk Yield (kg/cow/day)	12.2 15.3	13.0 16.2	12.3 13.6
Fat (%)	4.17 4.05	4.23 4.16	4.82 4.94
Protein (%)	4.02 3.84	3.95 3.91	4.21 4.24
Lactose (%)	4.46 4.52	4.41 4.52	4.42 4.54
Milk Solids (kg/cow)	0.99 1.19	1.06 1.29	1.10 1.24
Cum. Milk Solids (kg/cow)	318.1 347.0	330.4 361.3	341.3 379.0
Bodyweight (kg)	540 548	538 568	523 543
BCS	2.64 2.75	2.71 2.88	2.91 2.93

#### Provisional Reproductive Performance

24day Submission rate (%)	70	93	83
42 Day In-calf Rate %	50	57	67
14 Week Empty Rate %	20	22	8

*\*NB: These are raw data with unbalanced groups that have not been statistically analysed and, therefore, no definite conclusions can be drawn from them. Reproductive performance data is subject to final scanning confirmation in early October.*