

Curtins Farm Walk Notes Tuesday 14-09-10

Low Stocking Rate Group (2.5 HF Cows/ha)

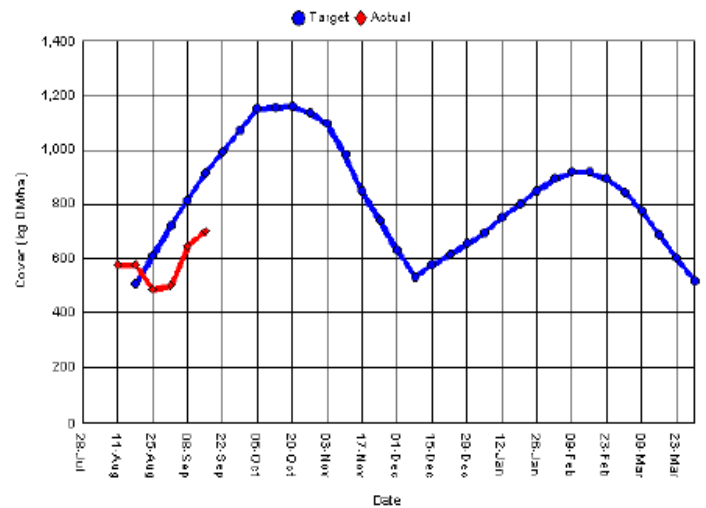
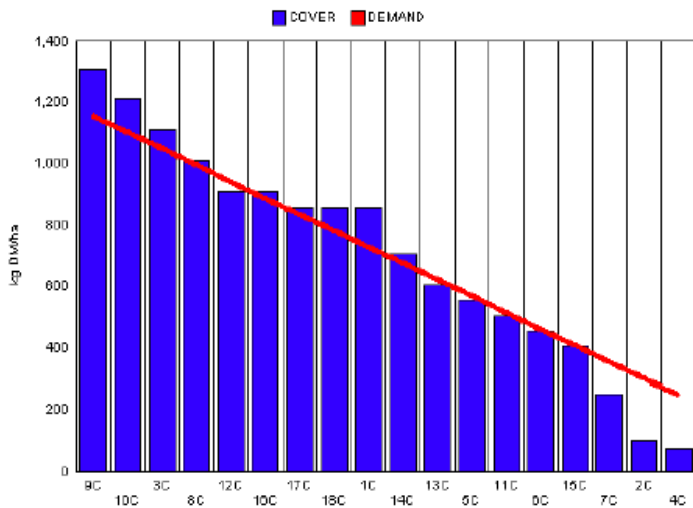
Critical Issues

- 1) Maintain post-grazing height at between 4.5 – 5cm
- 2) Achieve target autumn average farm cover.

Situation

Figure 1. Low Stocking Rate Feed Wedge & Autumn Budget

Moorepark Animal & Grassland Research and Innovation Centre		GrazePlan - Grass Measurement Report																														
Group : TEAGASC RESEARCH FARMS		Date Produced 14-SEP-10																														
Farm : Curtins Farm	Effect of stocking rate and calving date on animal performance																															
Date : 13-SEP-10	Treatment : Low SR																															
<table style="width: 100%; border-collapse: collapse;"> <tr><td>Rotation Length :</td><td style="text-align: right;">40</td></tr> <tr><td>Grass Allocation /cow (kg grass dry matter/LU) :</td><td style="text-align: right;">11.5</td></tr> <tr><td>Concentrate Fed (kg/cow) :</td><td style="text-align: right;">4</td></tr> <tr><td>Silage Fed (kg DM/cow) :</td><td style="text-align: right;">2.5</td></tr> <tr><td>N Application Rate (units/acre) :</td><td></td></tr> <tr><td>N Application Rate (kg/ha) :</td><td></td></tr> <tr><td>Residual Height :</td><td style="text-align: right;">5</td></tr> <tr><td>Total Livestock :</td><td style="text-align: right;">23</td></tr> </table>	Rotation Length :	40	Grass Allocation /cow (kg grass dry matter/LU) :	11.5	Concentrate Fed (kg/cow) :	4	Silage Fed (kg DM/cow) :	2.5	N Application Rate (units/acre) :		N Application Rate (kg/ha) :		Residual Height :	5	Total Livestock :	23	<table style="width: 100%; border-collapse: collapse;"> <tr><td>Farm Cover (kg DM/ha) :</td><td style="text-align: right;">699</td></tr> <tr><td>Farm Cover (kg DM/LU) :</td><td style="text-align: right;">278</td></tr> <tr><td>Current Monthly Fertilizer Rate (kg/ha) :</td><td></td></tr> <tr><td>Stock Rate (LU/ha) :</td><td style="text-align: right;">2.52</td></tr> <tr><td>Growth Rate :</td><td style="text-align: right;">51</td></tr> <tr><td>Farm Demand (kg DM/LU/day) :</td><td style="text-align: right;">29</td></tr> <tr><td>Target pregrazing yield (kg DM/ha) :</td><td style="text-align: right;">1158</td></tr> </table>		Farm Cover (kg DM/ha) :	699	Farm Cover (kg DM/LU) :	278	Current Monthly Fertilizer Rate (kg/ha) :		Stock Rate (LU/ha) :	2.52	Growth Rate :	51	Farm Demand (kg DM/LU/day) :	29	Target pregrazing yield (kg DM/ha) :	1158
Rotation Length :	40																															
Grass Allocation /cow (kg grass dry matter/LU) :	11.5																															
Concentrate Fed (kg/cow) :	4																															
Silage Fed (kg DM/cow) :	2.5																															
N Application Rate (units/acre) :																																
N Application Rate (kg/ha) :																																
Residual Height :	5																															
Total Livestock :	23																															
Farm Cover (kg DM/ha) :	699																															
Farm Cover (kg DM/LU) :	278																															
Current Monthly Fertilizer Rate (kg/ha) :																																
Stock Rate (LU/ha) :	2.52																															
Growth Rate :	51																															
Farm Demand (kg DM/LU/day) :	29																															
Target pregrazing yield (kg DM/ha) :	1158																															



- 1) Farm cover is 699kg/ha or 278kg/cow, which is an increase on last weeks figure. However, we are still behind target in terms of average farm cover, 699kg versus target of 903kg but we are moving in the right direction.

- 2) Therefore, we are continuing to supplement with 4kg of concentrate and 2.5kg of bale silage for the rest of this week. Growth rates for the last 5 days were 51kg while demand is 29kg/day.
- 3) The silage is fed out in the paddock underneath the dividing wire.
- 4) Cows are getting approximately 4 grazings per paddock. Despite the rain, conditions are still excellent for both grazing and feeding silage in the field. If conditions deteriorate we will commence strip grazing and start feeding silage indoors.
- 5) Total dry matter intakes are estimated to be 18kg/day.

High Stocking Rate Group (3.3 HF Cows/ha)

Critical Issues

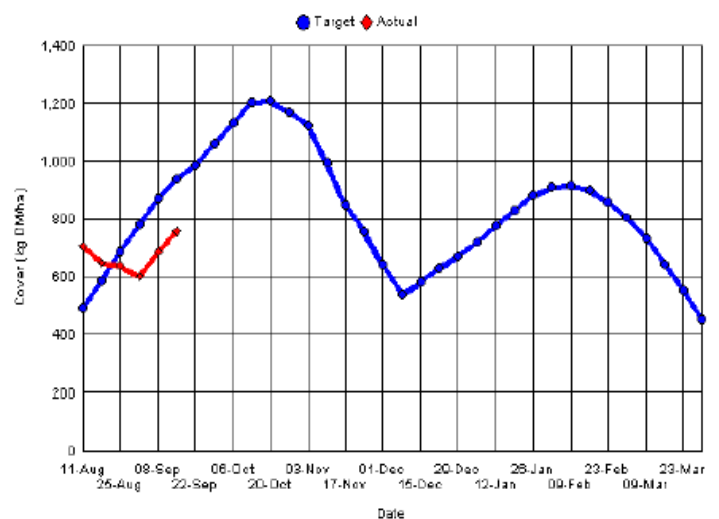
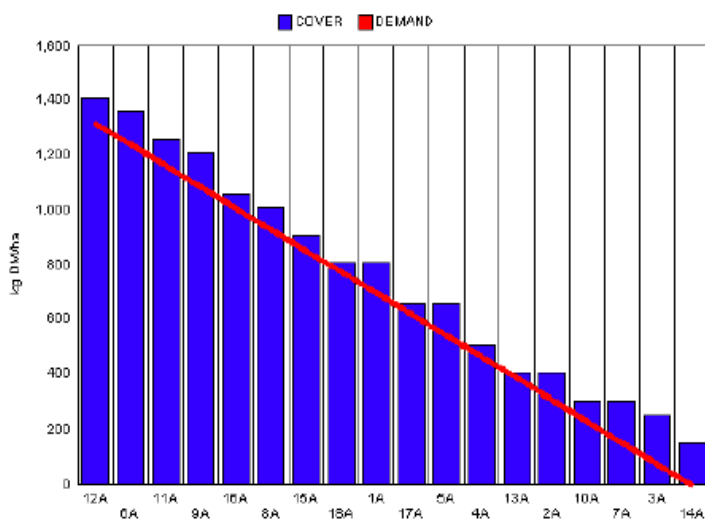
1. Maintain post-grazing height at 3.5cm
2. Achieve target autumn average farm cover.

Situation

Figure 2. High Stocking Rate Feed Wedge & Autumn Budget

Moorepark Animal & Grassland Research and Innovation Centre		GrazePlan - Grass Measurement Report	
Group : TEAGASC RESEARCH FARMS		Date Produced	14-SEP-10
Farm : Curtins Farm	Effect of stocking rate and calving date on animal performance		
Date : 13-SEP-10	Treatment : High SR		

Rotation Length :	40	Farm Cover (kg DM/ha) :	756
Grass Allocation /cow (kg grass dry matter/LU) :	10	Farm Cover (kg DM/LU) :	229
Concentrate Fed (kg/cow) :	4	Current Monthly Fertilizer Rate (kg/ha) :	
Silage Fed (kg DM/cow) :	2.5	Stock Rate (LU/ha) :	3.30
N Application Rate (units/acre) :		Growth Rate :	60
N Application Rate (kg/ha) :		Farm Demand (kg DM/LU/day) :	33
Residual Height :	3.5	Target pregrazing yield (kg DM/ha) :	1318
Total Livestock :	23		



1. Farm cover is 756kg/ha (229/cow), which is an increase on last weeks figure. As can be seen in Figure 2, we are still considerably behind target in terms of average farm cover (756 vs 940kg). For this reason we are continuing to feed 4kg of concentrate per day along with 2.5kg of bale silage.

2. Growth rate for this group is at 60kg/day while demand for the coming week is 31kg/day so farm cover should increase more by next week, at which time we hope to be able to remove silage from the diet.
3. Total dry matter intakes are estimated to be 16kg/day

Whole Farm Situation

1. Average weekly growth this week was between 51 and 60kg/day.
2. Dry matters were 12.8% on Monday morning.
3. Rotation lengths for all groups has been set at 40 days, target for end of September is 45-50 days.
4. 27 units of Urea is being spread per acre after grazing up until Wednesday 15th September. Total amount of nitrogen spread for 2010 will be approximately 260kgN/ha. We had budgeted for 250kgN/ha.
5. Latest milk quality test results from the milk processor are; Fat 4.60%, Protein 3.76%, Lactose 4.63%, SCC 205k, TBC 11k, THD 0, Sediment A.
6. AI commenced on the 26th of April and ceased on the 7th of August.
7. Critical Short-term Actions:
 - a. Achieve desired post grazing heights for treatment groups, if this involves moving cows to fresh pasture between milkings it will be done.

Farmers and their advisors who wish to follow the progress of the High Stocking Rate group on the IFC Grass Program can do so by sending an invitation through the program to the username: Curtins Farm High SR

EXPERIMENTAL PROGRESS REPORT AS AT SUNDAY, 12/09/10

Objective: To compare the biological efficiency of alternative calving date and stocking rate combinations for Irish spring calving pasture-based production systems

Herd Details	EBI (€)	MILK SI (€)	FERT SI (€)	CALVING SI (€)	BEEF SI (€)	HEALTH SI (€)
Average	120	59	52	22	-10	-3

(September 2009 ICBF)

Calving Date Group Stocking rate Group	Early Calving			Late Calving		
	Low	Medium	High	Low	Medium	High
Stocking rate (cows/ha)	2.51	2.92	3.28	2.51	2.92	3.28
Mean calving date	17-Feb	17-Feb	17-Feb	2-March	5-March	3-March
Ear-tag Colour	White	Blue	Orange	White	Blue	Orange
Band Colour	Yellow	Yellow	Yellow	Blue	Blue	Blue

Week Details:						
Area allocated (m ² /day)	4360	3700	2600	4360	3700	2600
Farmlet cover (kg DM/cow)	278	240	229	274	227	224
Pre-herbage mass (kg DM/ha)	1350	1300	1400	1350	1300	1400
Residual grazing height (cm)	4.23	4.06	3.69	4.59	4.06	3.56
Diet (kg DM/cow/day)						
Grass	11.5	10.5	9.5	11.5	10.5	9.5
Silage	2.5	2.5	2.5	2.5	2.5	2.5
Concentrate	4	4	4	4	4	4
Milk solids (kg/cow/day)	1.49	1.44	1.46	1.50	1.46	1.49
Milk yield (kg/cow/day)	18.9	17.8	16.6	19.0	19.0	17.5
% Fat	4.21	4.35	4.97	4.19	4.04	4.79
% Protein	3.71	3.84	3.91	3.70	3.70	3.86
Bodyweight (kg)	579	545	522	562	548	526
Condition Score	3.11	2.97	2.85	2.95	2.95	2.85

Cumulative:						
Milk solids (kg/cow)	358	330	337	338	311	325
(kg/ha)	899	964	1105	848	908	1066
Milk yield (kg/cow)	4706	4265	4352	4480	4240	4267
% Fat	4.09	4.23	4.28	4.03	3.90	4.17
% Protein	3.53	3.50	3.49	3.52	3.44	3.46
Days in milk	207	206	207	193	192	193
Total supplement fed (kg/cow)						
Concentrate	460	451	460	402	394	398
Silage	71	124	129	67	79	99
Conserved silage (kg DM /cow)	958	558	575	958	558	575
Bought in Silage (kg DM /cow)	593	593	593	593	593	593
Farmlet area (hectares)	9.17	7.87	7.01	9.17	7.87	7.01
Number of cows calved	23	23	23	23	23	23
Number of cows in group	23	23	23	23	23	23
Non-lactating cows						

NB: These are raw data that have not been statistically analysed and, therefore, no definite conclusions can be drawn from them.