

Curtins Farm Walk Notes Tuesday 22-02-11

Low Stocking Rate Group (2.5 Cows/ha)

Situation

Figure 1. Low Stocking Rate Feed Wedge

Moorepark Animal & Grassland Research and Innovation Centre		GrazePlan - Grass Measurement Report	
Group : TEAGASC RESEARCH FARMS		Date Produced	22-FEB-11
Farm : Curtins Farm		Effect of stocking rate and calving date on animal performance	
Date : 21-FEB-11		Treatment : Low SR	

Grass Allocation /cow (kg grass dry matter/LU)	12	Farm Cover (kg DM/ha) :	569
Concentrate Fed (kg/cow) :	3	Farm Cover (kg DM/LU) :	371
Silage Fed (kg DM/cow) :		Current Monthly Fertilizer Rate (kg/ha) :	
N Application Rate (units/acre) :		Stock Rate (LU/ha) :	1.53
N Application Rate (kg/ha) :		Growth Rate :	14
Residual Height :		Farm Demand (kg DM/LU/day) :	18
Total Livestock :	14	Target pregrazing yield (kg DM/ha) :	919

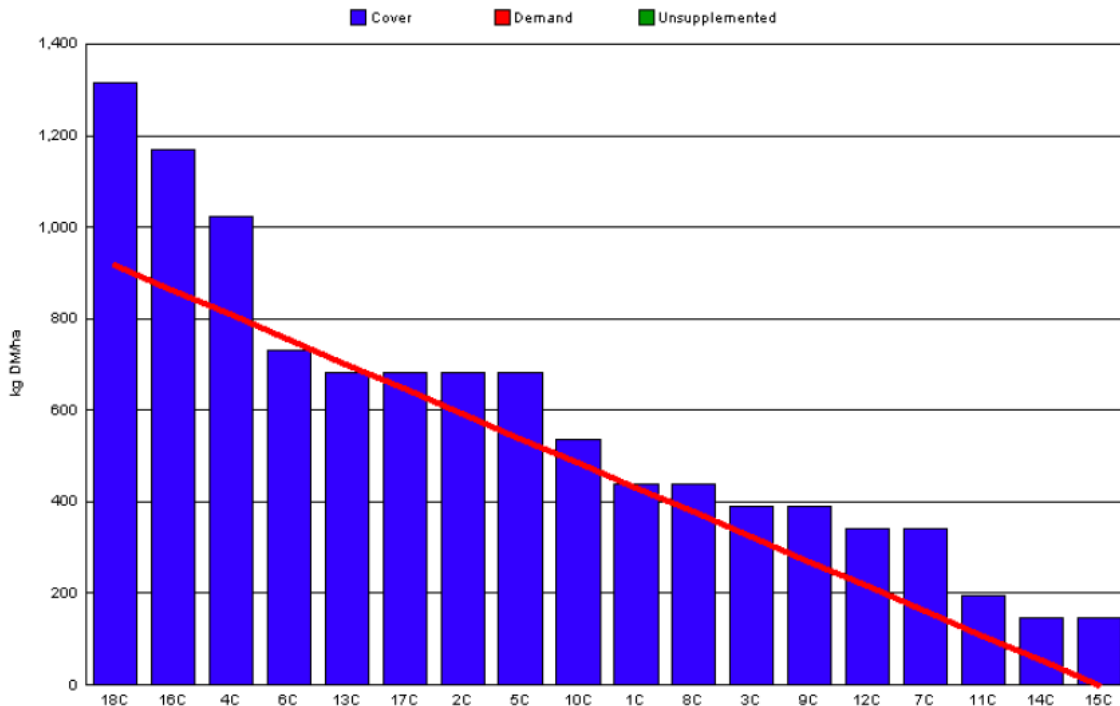
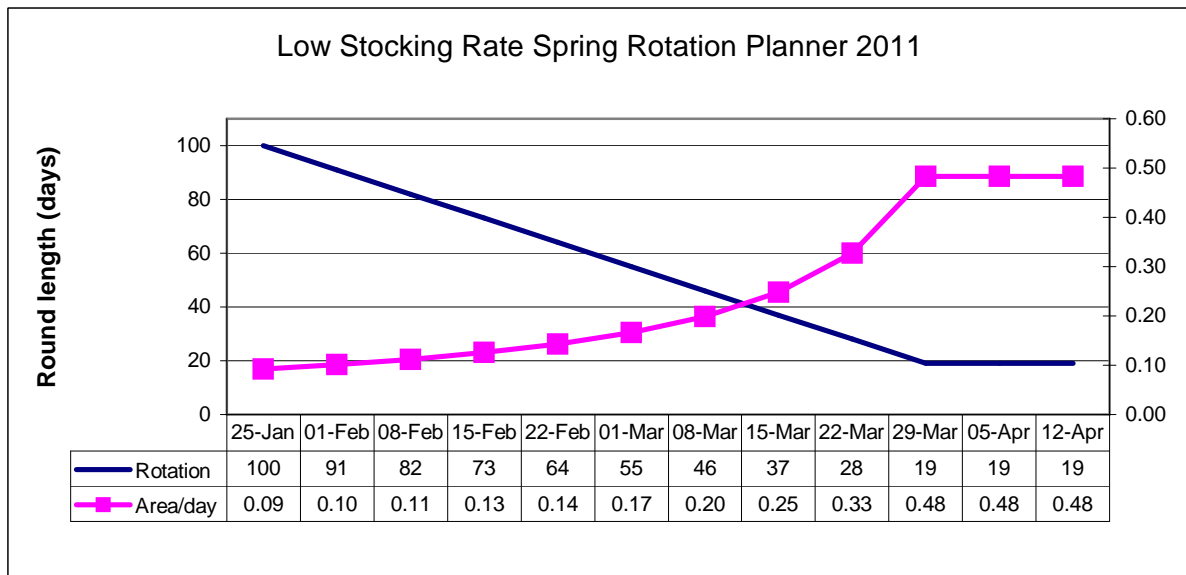


Figure 2. Low Stocking Rate Spring Rotation Planner



- 70% of the Low Stocking Rate group are calved. The first cow calved on the 20th of January and grazing commenced on the 1st of February, one week later than planned.
- 17% of the farmlet has been grazed which is behind target. The target percentage grazed for this group for today, according to the Spring Rotation Plan is 33%. The reason we are behind this target is due to delayed turnout and also because smaller areas were being allocated over the past two weeks as there was insufficient demand to graze out the areas that would have been allocated if the Spring Rotation Plan was being adhered to.
- However, as the percentage calved has increased and pre-grazing yields have decreased we now have the ability to increase area being allocated per day over and above the planned area for this week. This should allow us to get back to the target percentage grazed over the next week and also maintain intakes of grass. However, the situation will be monitored closely to ensure we do not exceed the target percentage grazed.
- Cows are being allocated 12kg of grass and 3kg of concentrate (16% protein)
- Cows are on 12hour allocations of grass. On/off grazing and back fencing is used when necessary.

High Stocking Rate Group (3.3 Cows/ha)

Situation

Figure 5. High Stocking Rate Feed Wedge

Moorepark Animal & Grassland Research and Innovation Centre		GrazePlan - Grass Measurement Report	
Group : TEAGASC RESEARCH FARMS		Date Produced	22-FEB-11
Farm : Curtins Farm		Effect of stocking rate and calving date on animal performance	
Date : 21-FEB-11		Treatment :	High SR

Grass Allocation /cow (kg grass dry matter/LU)	6	Farm Cover (kg DM/ha) :	498
Concentrate Fed (kg/cow) :	2	Farm Cover (kg DM/LU) :	232
Silage Fed (kg DM/cow) :	6	Current Monthly Fertilizer Rate (kg/ha) :	
N Application Rate (units/acre) :		Stock Rate (LU/ha) :	2.15
N Application Rate (kg/ha) :		Growth Rate :	20
Residual Height :	3	Farm Demand (kg DM/LU/day) :	13
Total Livestock :	15	Target pregrazing yield (kg DM/ha) :	645

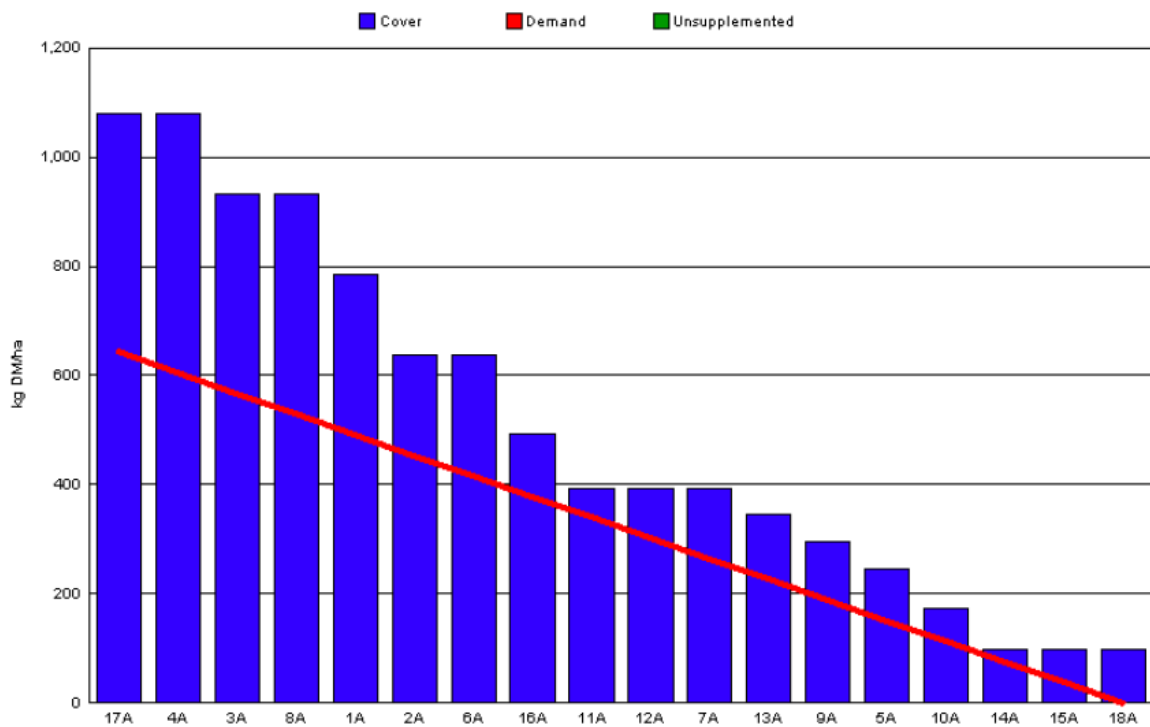
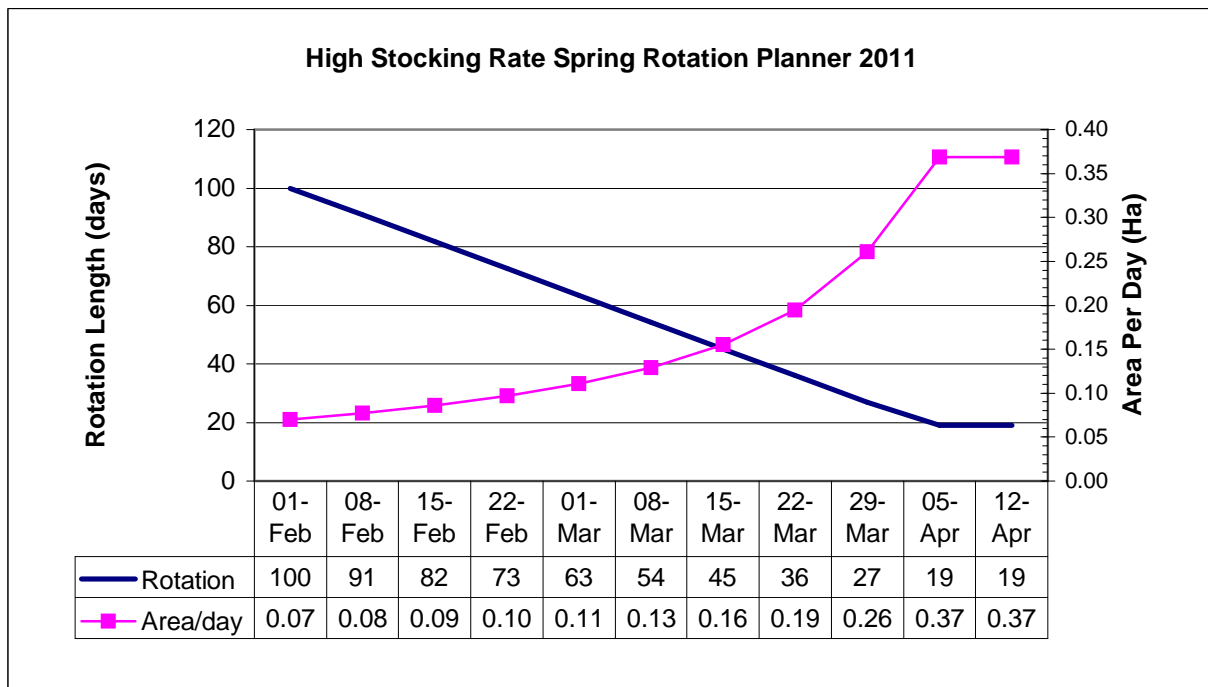


Figure 6. High Stocking Rate Spring Rotation Planner



- 70% of the High Stocking Rate group are calved. The first cow calved on the 25th of January and grazing commenced on the 7th of February, one week later than planned.
- 20% of the farmlet has been grazed which is slightly behind the target set by the Spring Rotation Planner of 23% (equivalent to two days grazing).
- Pre grazing yield is 1100kg and area allocation per day is 0.1ha which gives us a daily grass allowance of 110kg between 16 cows or 6.8kg grass/cow/day which is too low. For this reason we are supplementing with 6kg silage and 2kg concentrate.
- Cows are on 12hour allocations of grass and are receiving silage at night. On/off grazing and back fencing is used when and where necessary.

Whole Farm Situation

1. 3000gls/acre of watery slurry was spread on 30% of the farm in late January along with 23 units of Urea on the remaining 70% of the area. 3000gls/acre of slurry is being spread on paddocks post grazing.
2. Growth rate over the last 10 days was 17kg.
3. Latest milk composition details from the processor are: Fat 4.66%, Protein 3.51%, Lactose 4.71% and SCC 162k.