

Curtins Farm Walk Notes Tuesday 01-03-11

Low Stocking Rate Group (2.5 Cows/ha)

Situation

Figure 1. Low Stocking Rate Feed Wedge

Moorepark Animal & Grassland Research and Innovation Centre		GrazePlan - Grass Measurement Report	
Group : TEAGASC RESEARCH FARMS		Date Produced 01-MAR-11	
Farm : Curtins Farm		Effect of stocking rate and calving date on animal performance	
Date : 28-FEB-11		Treatment : Low SR	
Rotation Length :	60	Farm Cover (kg DM/ha) :	522
Grass Allocation /cow (kg grass dry matter/LU)	12	Farm Cover (kg DM/LU) :	265
Concentrate Fed (kg/cow) :	4	Current Monthly Fertilizer Rate (kg/ha) :	
Silage Fed (kg DM/cow) :		Stock Rate (LU/ha) :	1.97
N Application Rate (units/acre) :		Growth Rate :	20
N Application Rate (kg/ha) :		Farm Demand (kg DM/LU/day) :	24
Residual Height :		Target pregrazing yield (kg DM/ha) :	1418
Total Livestock :	18		

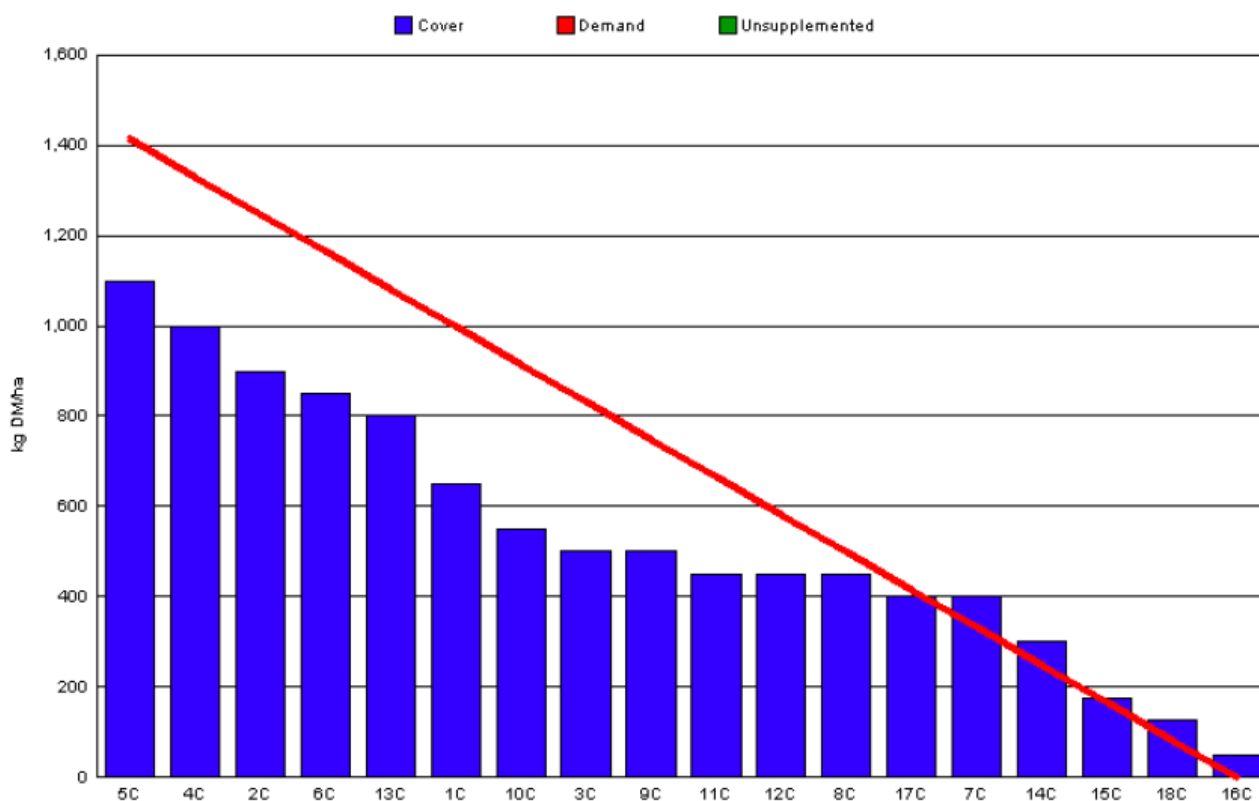
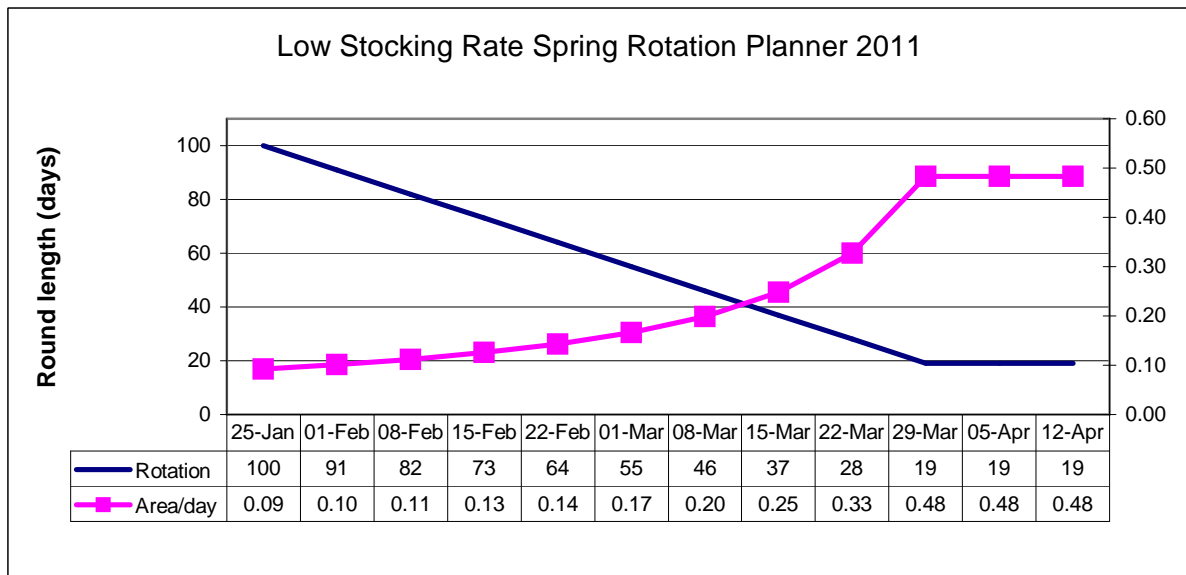


Figure 2. Low Stocking Rate Spring Rotation Planner



- 91% of the Low Stocking Rate group are calved. The first cow calved on the 20th of January and grazing commenced on the 1st of February, one week later than planned.
- 29% of the farmlet has been grazed which is behind target. The target percentage grazed for this group for today, according to the Spring Rotation Plan is 43%. The reason we are behind this target is due to delayed turnout and also because smaller areas were being allocated than planned at the start as there was insufficient demand to graze out the areas that would have been allocated if the Spring Rotation Plan was being adhered to.
- The target of 43% grazed by the 1st of March is high and represents a large proportion of the farm. The rationale behind this is because it is a low stocking rate, demand will be lower so we can afford to start the second rotation earlier and avoid excessive surpluses in April which are deleterious to grass quality.
- According to the planner, we should be grazing 0.17ha/day for this week. At an average pre-grazing yield of 1050kg and with 18 cows in the group grass allowance would be 9.9kg/cow/day. As we are behind in area grazed we are going to allocate extra area this week. Actual area being allocated is 0.2ha/day which will give a grass allowance of 11.6kg, 4kg of concentrate is also being fed.

High Stocking Rate Group (3.3 Cows/ha)

Situation

Figure 5. High Stocking Rate Feed Wedge

Moorepark Animal & Grassland Research and Innovation Centre		GrazePlan - Grass Measurement Report	
Group : TEAGASC RESEARCH FARMS		Date Produced	01-MAR-11
Farm : Curtins Farm		Effect of stocking rate and calving date on animal performance	
Date : 28-FEB-11		Treatment :	High SR
Rotation Length :	60	Farm Cover (kg DM/ha) :	586
Grass Allocation /cow (kg grass dry matter/LU)	7	Farm Cover (kg DM/LU) :	241
Concentrate Fed (kg/cow) :	3	Current Monthly Fertilizer Rate (kg/ha) :	
Silage Fed (kg DM/cow) :	4	Stock Rate (LU/ha) :	2.44
N Application Rate (units/acre) :		Growth Rate :	29
N Application Rate (kg/ha) :		Farm Demand (kg DM/LU/day) :	17
Residual Height :	3	Target pregrazing yield (kg DM/ha) :	1023
Total Livestock :	17		

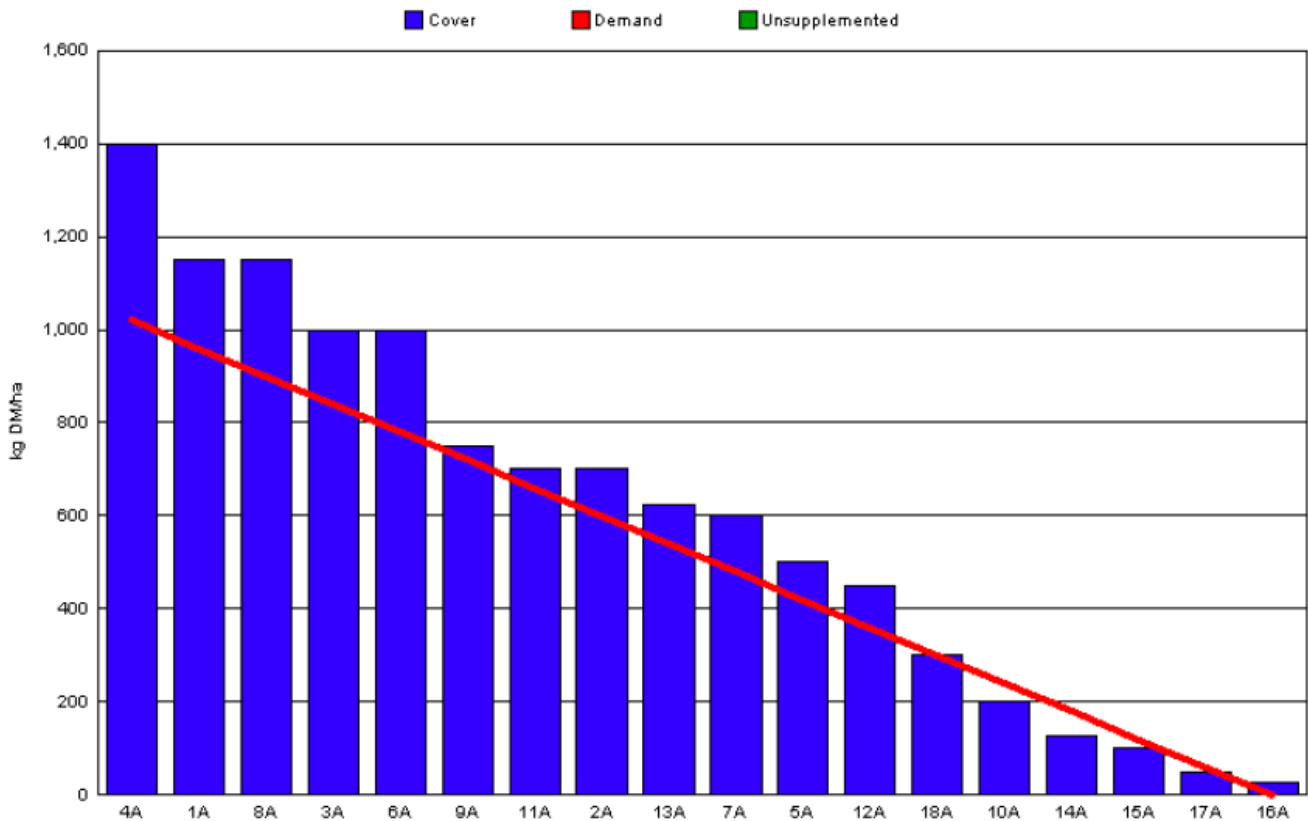
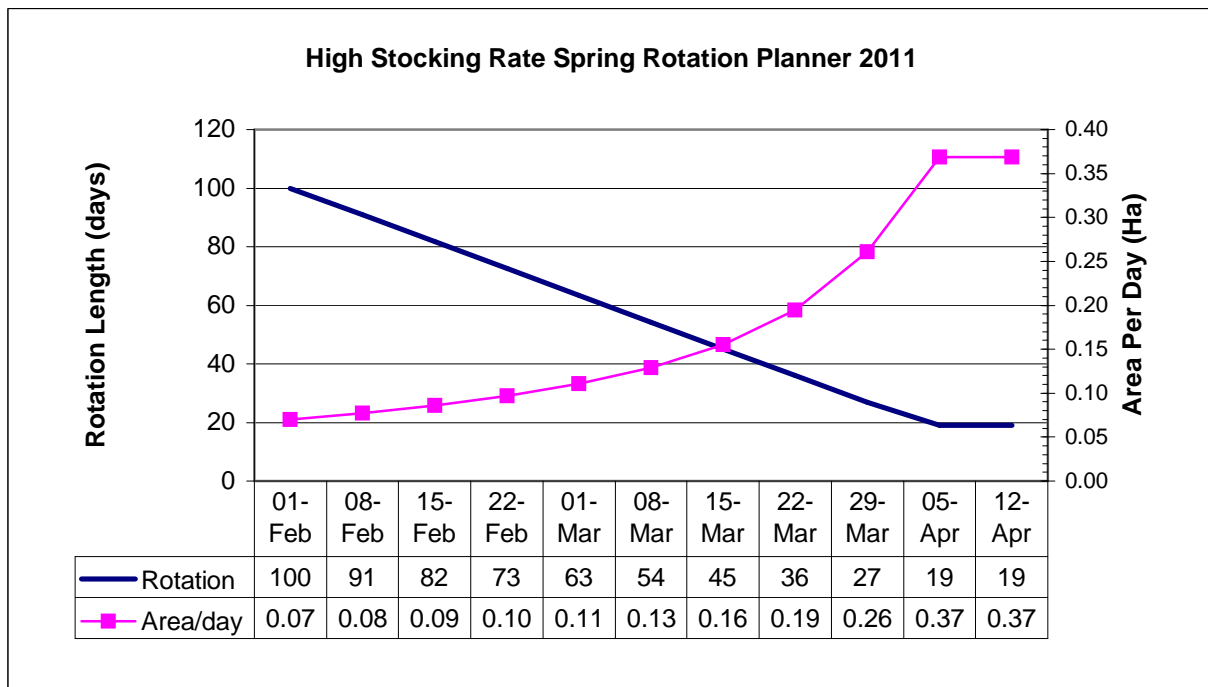


Figure 6. High Stocking Rate Spring Rotation Planner



- 78% of the High Stocking Rate group are calved. The first cow calved on the 25th of January and grazing commenced on the 7th of February, one week later than planned.
- 28% of the farmlet has been grazed which is slightly behind the target set by the Spring Rotation Planner of 33%.
- Average pre-grazing yield is 1200kg and area allocation per day is 0.11ha which equates to a daily grass allowance of 7.3kg/cow (18 cows in group). This is being supplemented with 4kg silage and 3kg concentrates.
- Cows are on 24hour allocations of grass and are receive their fresh allocation at night. They are brought indoors at 11am each day for silage until milking time.

Whole Farm Situation

1. 3000gls/acre of watery slurry was spread on 30% of the farm in late January along with 23 units of Urea on the remaining 70% of the area. 3000gls/acre of slurry has been spread on paddocks post grazing.
2. 40 units of urea will be spread on all paddocks this week other than the paddocks that have been grazed and received slurry.
3. Average growth rate over the last 10 days was 24.5kg.

4. Latest milk composition details from the processor are: Fat 5.3%, Protein 3.62%, Lactose 4.68%, Thermoduric 1300, Sediment B and SCC 199k.