

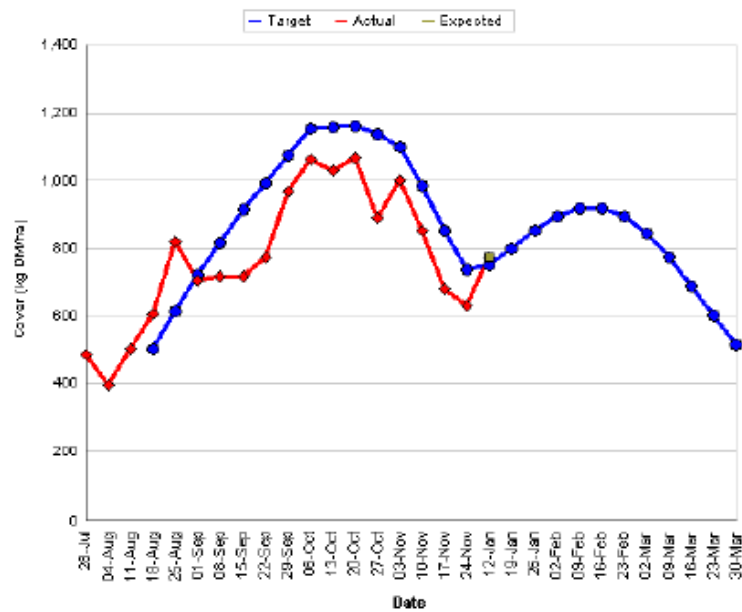
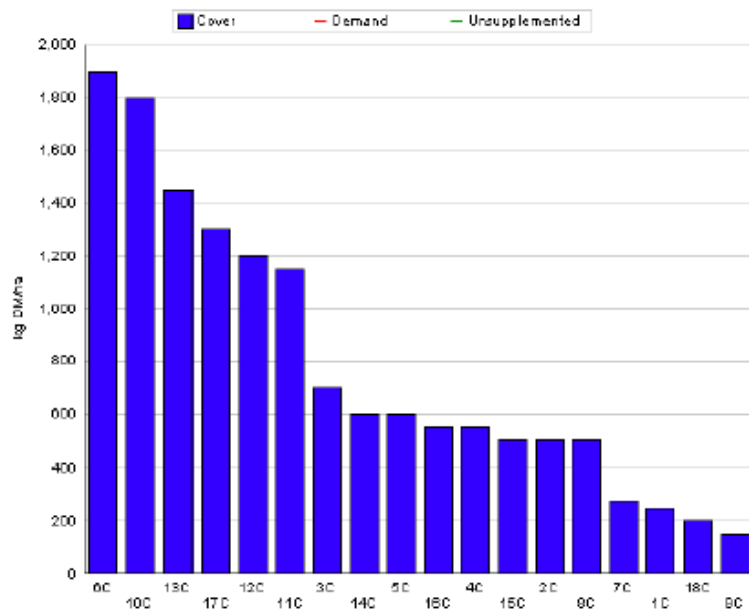
Curtins Farm Walk Notes Tuesday 10-01-12

Low Stocking Rate Group (2.5 Cows/ha)

Situation

Figure 1. Low Stocking Rate Feed Wedge

Moorepark Animal & Grassland Research and Innovation Centre		GrazePlan - Grass Measurement Report	
Group : TEAGASC RESEARCH FARMS		Date Produced : 10-JAN-12	
Farm : Curtins Farm		Effect of stocking rate and calving date on animal performance	
Date : 09-JAN-12		Treatment : Low SR	
Grass Allocation /cow (kg grass dry matter/LL) Concentrate Fed (kg/cow) : Silage Fed (kg DM/cow) : N Application Rate (units/acre) : N Application Rate (kg/ha) : Residual Height : Total Livestock (LU) :		Farm Cover (kg DM/ha) : 775 Farm Cover (kg DM/LU) : 308 Current Monthly Fertilizer Rate (kg/ha) : Stock Rate (LU/ha) : 2.52 Growth Rate : Farm Demand (kg DM/ha/day) : 3 Target pregrazing yield (kg DM/ha) : Forecast Growth Week 1 and 2:	
23			



- Closing farm cover at end of November was 632kg/ha. Opening farm cover is 775kg/ha
- Growth rate between November 24th and January 9th averaged 3.1kg/day.

High Stocking Rate Group (3.3 Cows/ha)

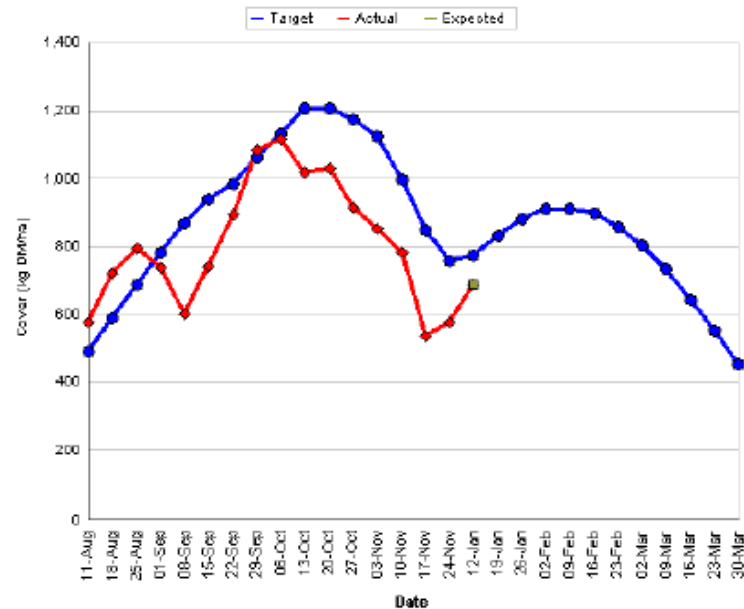
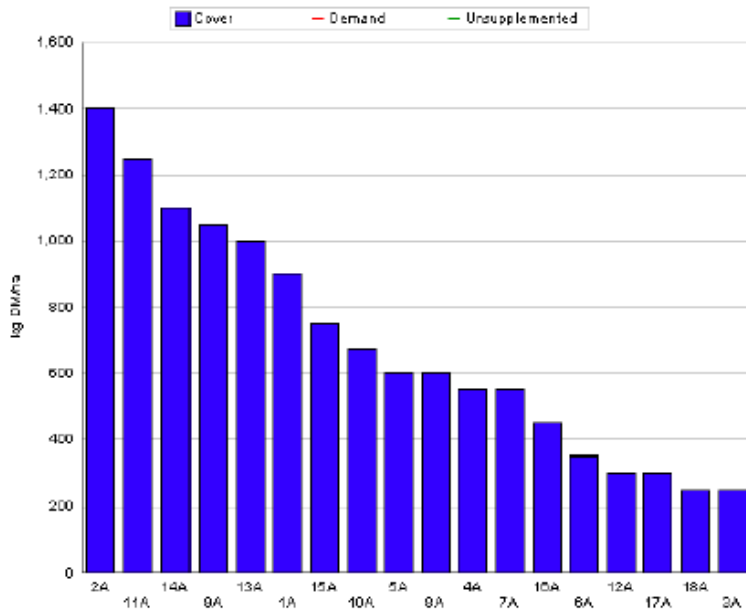
Situation

Figure 2. High Stocking Rate Feed Wedge

Moorepark Animal & Grassland Research and Innovation Centre		GrazePlan - Grass Measurement Report	
Group	TEAGASC RESEARCH FARMS	Date Produced	10-JAN-12
Farm	Curtins Farm	Effect of stocking rate and calving date on animal performance	
Date	09-JAN-12	Treatment	High SR

Grass Allocation /cow (kg grass dry matter/LL)	
Concentrate Fed (kg/cow) :	
Silage Fed (kg DM/cow) :	
N Application Rate (units/acre) :	
N Application Rate (kg/ha) :	
Residual Height :	
Total Livestock (LU) :	23

Farm Cover (kg DM/ha) :	688
Farm Cover (kg DM/LU) :	209
Current Monthly Fertilizer Rate (kg/ha) :	
Stock Rate (LU/ha) :	3.30
Growth Rate :	
Farm Demand (kg DM/ha/day) :	3
Target pregrazing yield (kg DM/ha) :	
Forecast Growth Week 1 and 2:	



- Closing farm cover at end of November was 550kg/ha. Opening farm cover is 688kg/ha
- Growth rate between November 24th and January 9th averaged 3kg/day.

Whole Farm Situation

1. There are currently 146 animals on farm. These are comprised of:
 - 32 in-calf heifers (Friesian and Crossbred)
 - 42 mature Crossbred cows

- 69 mature Friesian cows
2. All cows are on good quality bale silage.
 3. Cows were dosed for lice, worms and fluke (x2) and were also vaccinated for rotavirus. The first IBR vaccine will be administered this week.
 4. Slurry will be spread later this week on one third of the farm area at a rate of 2500 gallons/acre. Urea will be spread on the remaining area at a rate of 23 units/acre. The highest cover paddocks in each stocking rate will not be spread with fertiliser but will receive slurry after grazing.