

# Curtins Farm Walk Notes Wednesday 22-02-12

## Low Stocking Rate Group (2.5 Cows/ha)

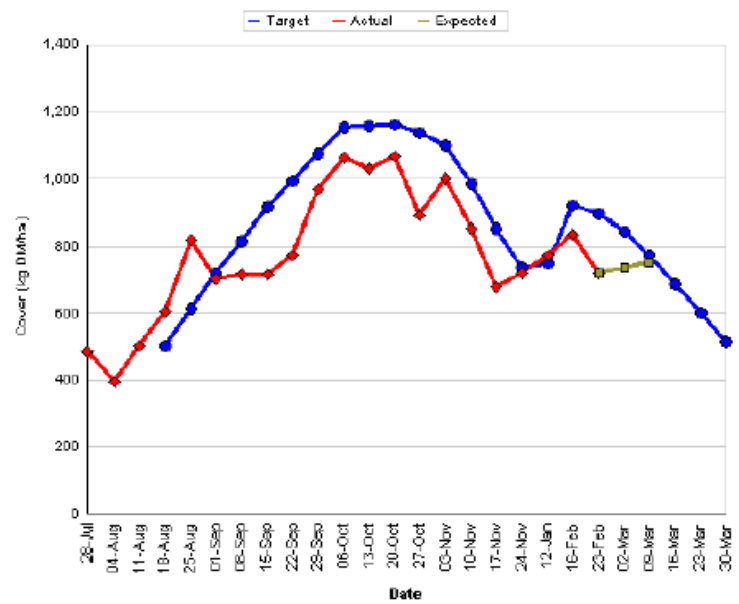
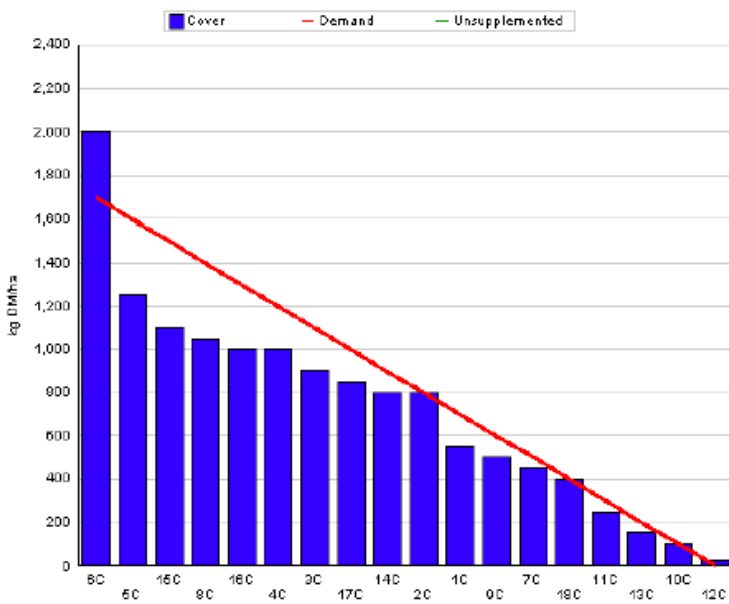
### Situation

**Figure 1. Low Stocking Rate Feed Wedge**

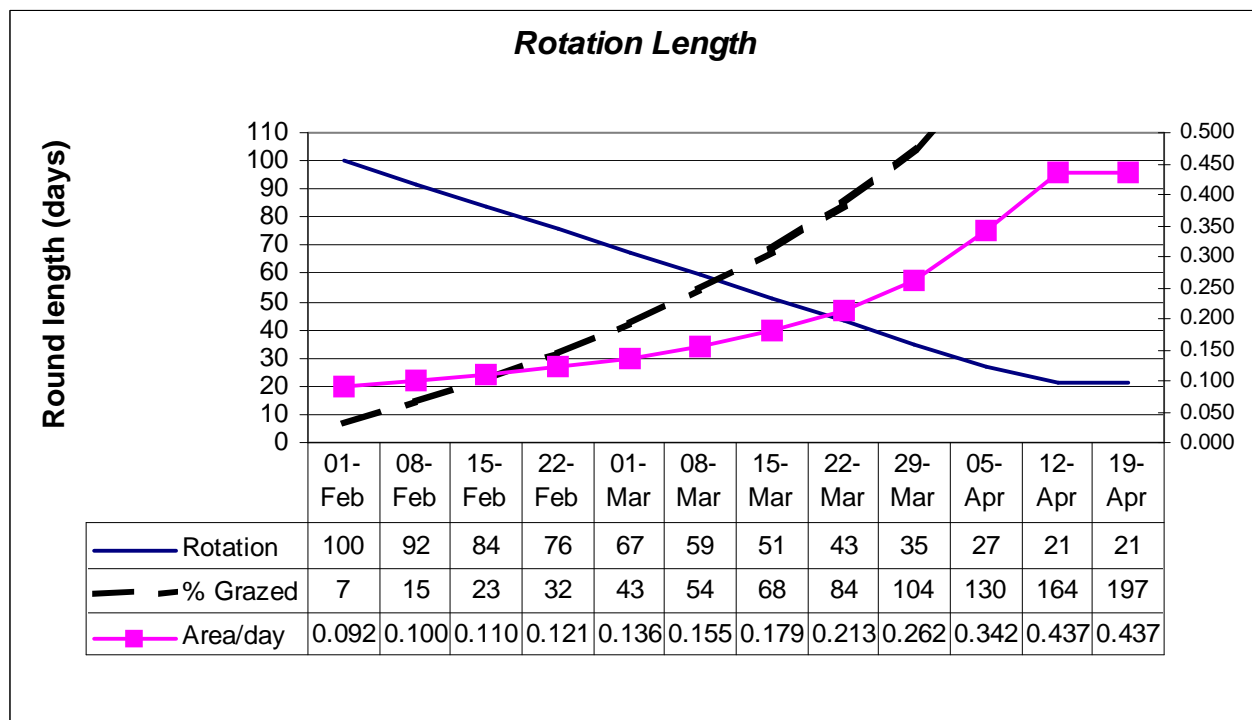
Moorepark Animal & Grassland Research and Innovation Centre		GrazePlan - Grass Measurement Report
Group: TEAGASC RESEARCH FARMS		Date Produced: 22-FEB-12
Farm: Curtins Farm	Effect of stocking rate and calving date on animal performance	
Date: 20-FEB-12	Treatment: Low SR	

Rotation Length:	76	Farm Cover (kg DM/ha):	720
Grass Allocation /cow (kg grass dry matter/LL)	12	Farm Cover (kg DM/LU):	387
Concentrate Fed (kg/cow):	4	Current Monthly Fertilizer Rate (kg/ha):	
Silage Fed (kg DM/cow):	0	Stock Rate (LU/ha):	1.86
N Application Rate (units/acre):		Growth Rate:	23
N Application Rate (kg/ha):		Farm Demand (kg DM/ha/day):	22
Residual Height:	4	Target pregrazing yield (kg DM/ha):	1696
Total Livestock (LU):	17	Forecast Growth Week 1 and 2:	25      27



**Figure 2. Low Stocking Rate Spring Rotation Planner**



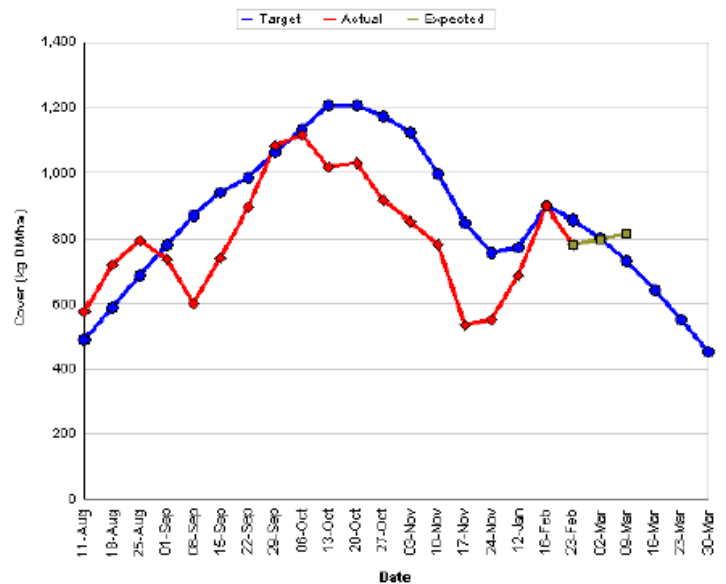
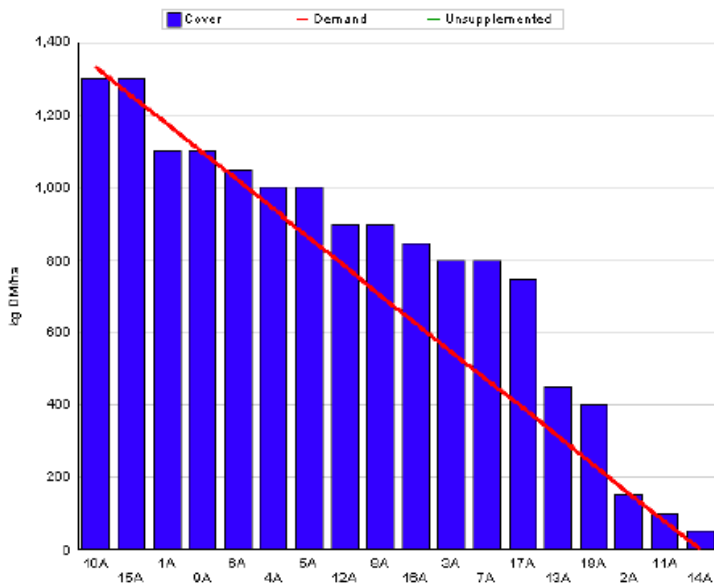
- 83% of the Low Stocking Rate group have calved. The first cow calved on the 22<sup>nd</sup> of January and grazing commenced on the 30<sup>th</sup> of January.
- 29% of the farmlet has been grazed so far. According to the spring rotation planner we should have 23% grazed by today so we are ahead of target.
- Cows are currently grazing paddock 17 and are moving to block 6 this evening which has a cover of 2000kgDM/ha. Based on the spring rotation planner, we should be allocating 0.121ha/day for the coming seven days. This would provide an allocation of 14.2kg grass/day. However we are not going to allocate this amount of grass as cows would be unable to consume it all, instead we will allocate 12kg grass and reduce the area being allocated per day to help bring us back to target.
- Cows are getting 4kg of concentrate per day. This is a citrus pulp/soya hulls/distillers blend with a ufl value of 0.95
- Growth rate for the past 7 days was 23kg/day.

## High Stocking Rate Group (3.3 Cows/ha)

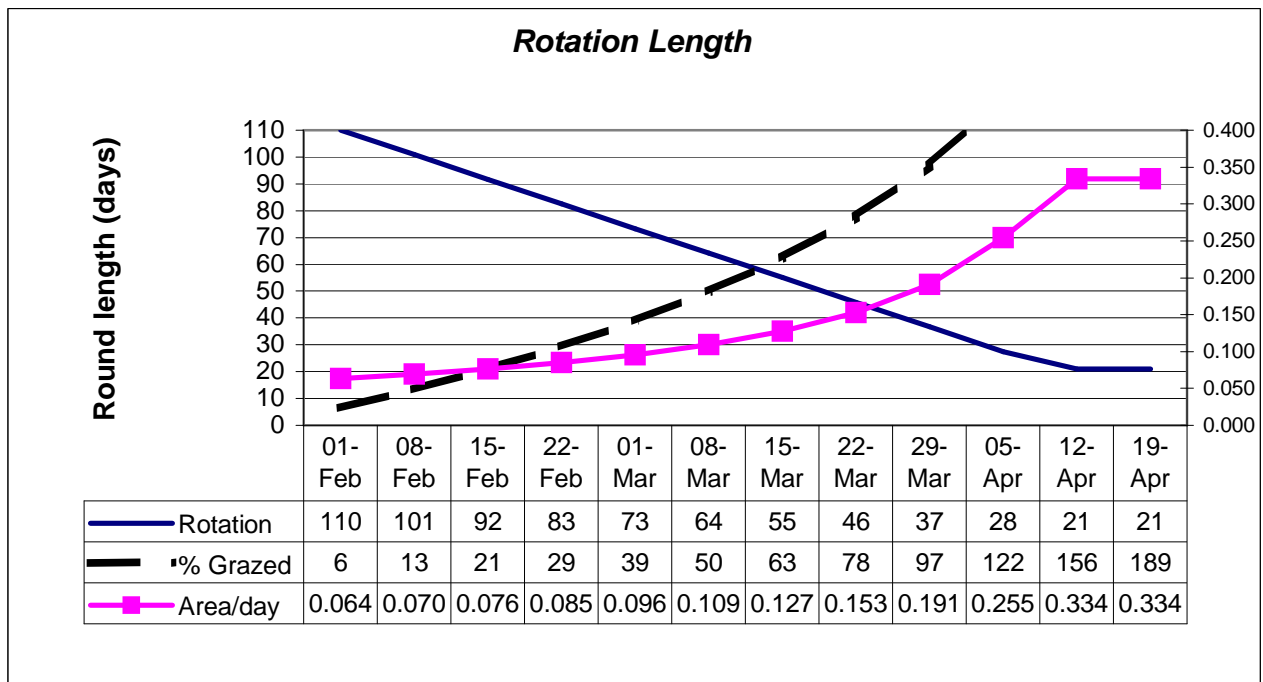
### Situation

Figure 5. High Stocking Rate Feed Wedge

Moorepark Animal & Grassland Research and Innovation Centre		GrazePlan - Grass Measurement Report	
Group	TEAGASC RESEARCH FARMS	Date Produced	22-FEB-12
Farm	Curtins Farm	Effect of stocking rate and calving date on animal performance	
Date	20-FEB-12	Treatment	High SR
Rotation Length :	83	Farm Cover (kg DM/ha) :	783
Grass Allocation /cow (kg grass dry matter/LL	8	Farm Cover (kg DM/LU) :	390
Concentrate Fed (kg/cow) :	4	Current Monthly Fertilizer Rate (kg/ha) :	
Silage Fed (kg DM/cow) :	0	Stock Rate (LU/ha) :	2.01
N Application Rate (units/acre) :		Growth Rate :	17
N Application Rate (kg/ha) :		Farm Demand (kg DM/ha/day) :	16
Residual Height :	3	Target pregrazing yield (kg DM/ha) :	1332
Total Livestock (LU) :	14	Forecast Growth Week 1 and 2:	18      20



**Figure 6. High Stocking Rate Spring Rotation Planner**



- 70% of the High Stocking Rate group have calved. The first cow calved on the 22<sup>nd</sup> of January and grazing commenced on the 4<sup>th</sup> of February, four days later than planned.
- 23% of the farmlet has been grazed, 2% more than planned for this time.
- Cows are grazing paddock 10. According to the spring rotation planner, we should be grazing 0.085ha/day or 850m<sup>2</sup>/day for the next 7 days. As can be seen in the feed wedge, pre grazing yield is 1300 so grass allowance is 8kg/day (1300kg \* 0.085ha / 14cows).
- Concentrate is being fed at 4kg/day. This is a citrus pulp/soya hulls/distillers blend with a ufl value of 0.95
- Growth rate for this farmlet over the last 7 days was 17kg/day.

### Whole Farm Situation

1. Between slurry and chemical nitrogen the whole farm has received approximately 23 units of nitrogen so far. Slurry was spread on 33% of the farm on the 13<sup>th</sup> of January at a rate of 2500gls/acre while urea was applied on the 10<sup>th</sup> of February at 23 units/acre on the remainder excluding some of the highest covers.

2. Slurry was applied at a rate 2500gls/acre to the first two paddocks grazed in each stocking rate. No more slurry will be spread on the grazing area.
3. Cows are on 12-hour allocations with a back-fence. Grazing conditions have improved considerably but have been very difficult heretofore and some poaching did occur. On/Off grazing is used when it is wet.
4. Latest milk composition details from the processor are: Fat 5.44%, Protein 3.61%, Lactose 4.69% and SCC 370k.
5. 5 cows were treated for mastitis this week (mainly heifers). One cow had a displaced abomasum (operated successfully) and two cows had retained afterbirth.

