

# Curtins Farm Walk Notes Tuesday 06-03-12

## Low Stocking Rate Group (2.5 Cows/ha)

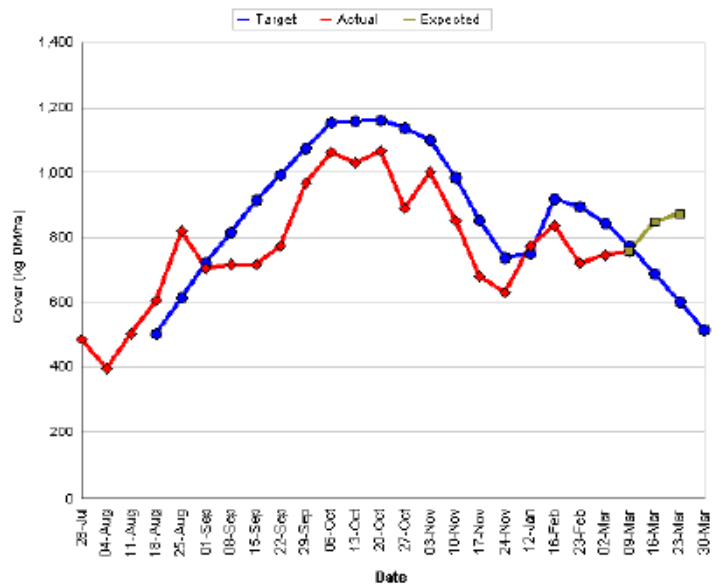
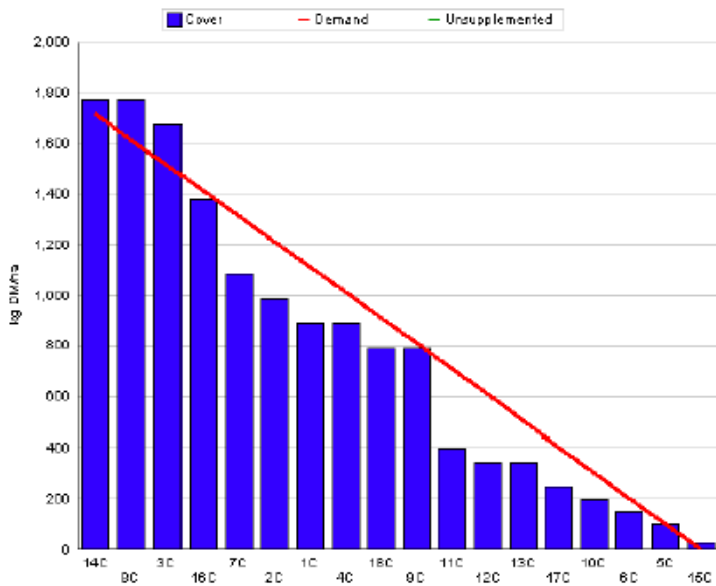
### Situation

**Figure 1. Low Stocking Rate Feed Wedge**

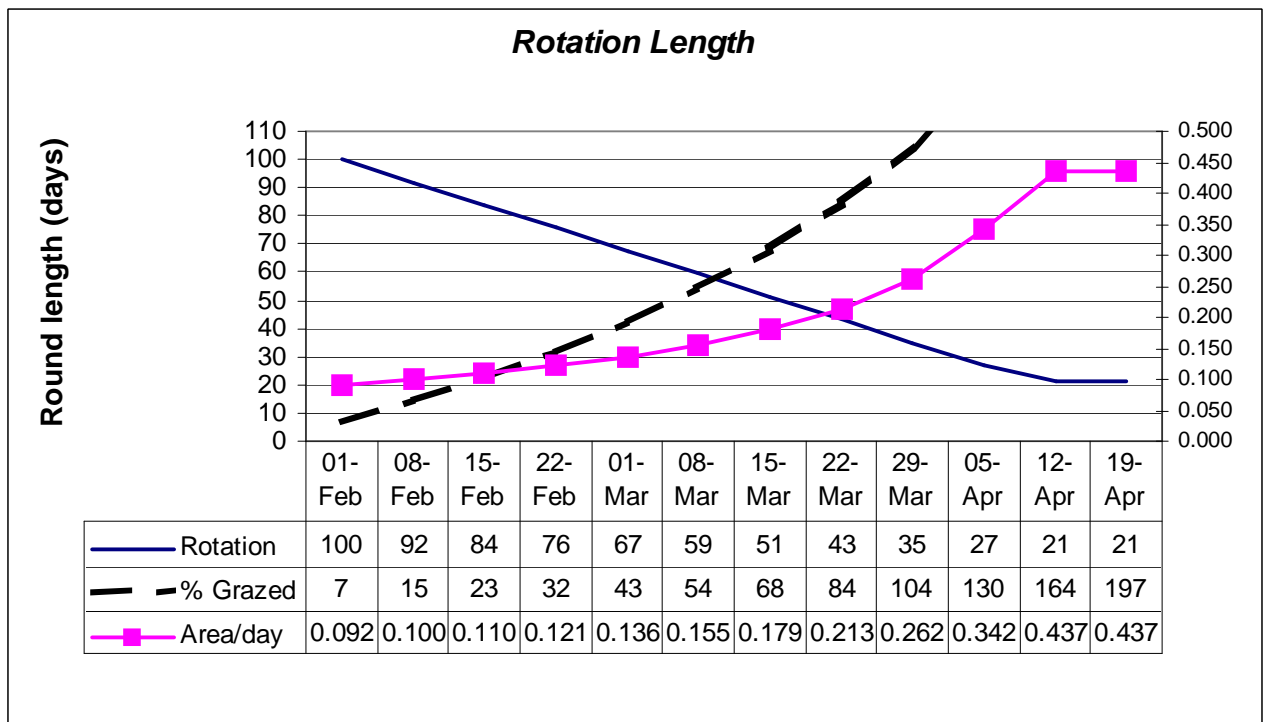
Moorepark Animal & Grassland Research and Innovation Centre		GrazePlan - Grass Measurement Report
Group : TEAGASC RESEARCH FARMS		Date Produced : 06-MAR-12
Farm : Curtins Farm	Effect of stocking rate and calving date on animal performance	
Date : 05-MAR-12	Treatment : Low SR	

Rotation Length :	59	Farm Cover (kg DM/ha) :	759
Grass Allocation /cow (kg grass dry matter/LL)	14	Farm Cover (kg DM/LU) :	365
Concentrate Fed (kg/cow) :	2.5	Current Monthly Fertilizer Rate (kg/ha) :	
Silage Fed (kg DM/cow) :	0	Stock Rate (LU/ha) :	2.08
N Application Rate (units/acre) :		Growth Rate :	32
N Application Rate (kg/ha) :		Farm Demand (kg DM/ha/day) :	29
Residual Height :	4	Target pregrazing yield (kg DM/ha) :	1717
Total Livestock (LU) :	19	Forecast Growth Week 1 and 2:	42      45



**Figure 2. Low Stocking Rate Spring Rotation Planner**



- 83% of the Low Stocking Rate group have calved. The first cow calved on the 22<sup>nd</sup> of January and grazing commenced on the 30<sup>th</sup> of January.
- 50% of the farmlet has been grazed so far. According to the spring rotation planner we should have 43% grazed by today so we remain ahead of target. The planned start of the second round was the 4<sup>th</sup> of April. The fact that we have more area grazed than planned means that the second rotation will commence 3 days earlier on the 1<sup>st</sup> of April (presuming we stick to the plan from here on). This is not a major concern at present as there is sufficient grass on the farm to support an earlier second rotation.
- Cows are currently grazing paddock 4 and are moving to paddock 14 tomorrow which has a cover of 1800kgDM/ha. Based on the spring rotation planner, we should be allocating 0.155ha/day for the coming seven days. This would provide an allocation of 14.6kg grass/day (1800kg \* 0.155ha / 19cows).
- Cows are getting 2.5kg of concentrate per day. This is a citrus pulp/soya hulls/distillers blend with a ufl value of 0.95
- Growth rate for the past 7 days was 32kg/day.

## High Stocking Rate Group (3.3 Cows/ha)

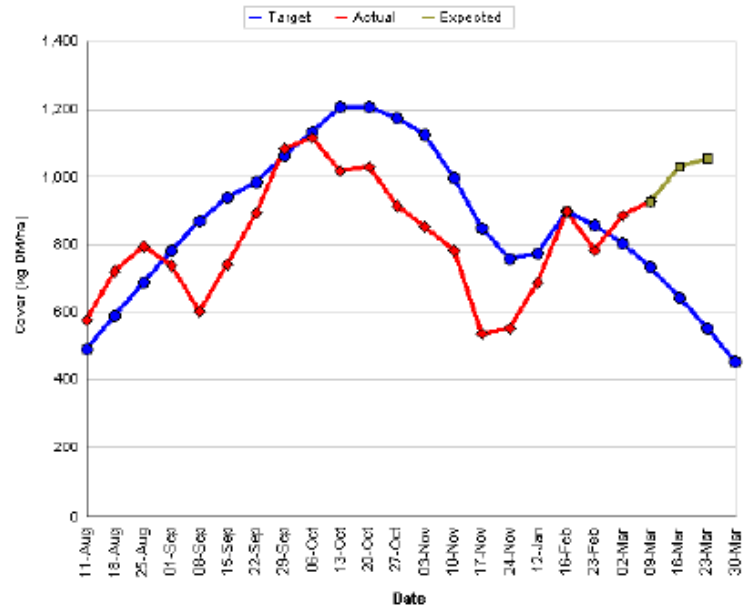
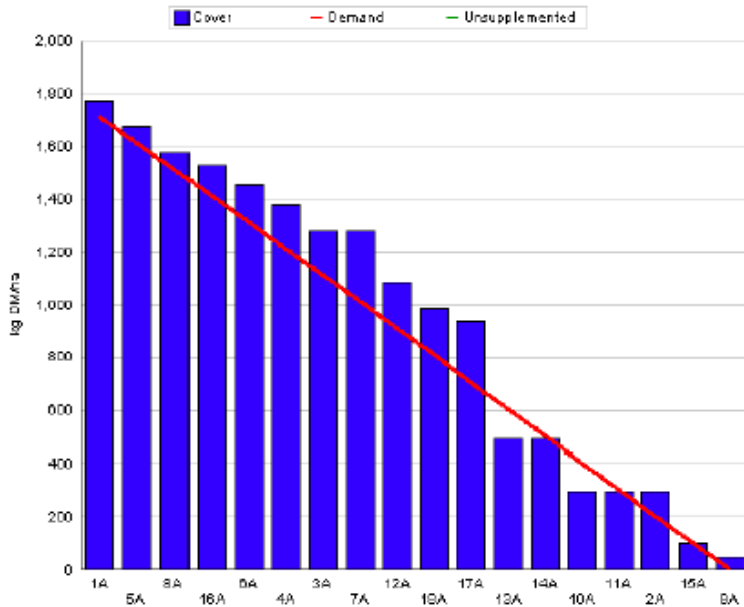
### Situation

Figure 5. High Stocking Rate Feed Wedge

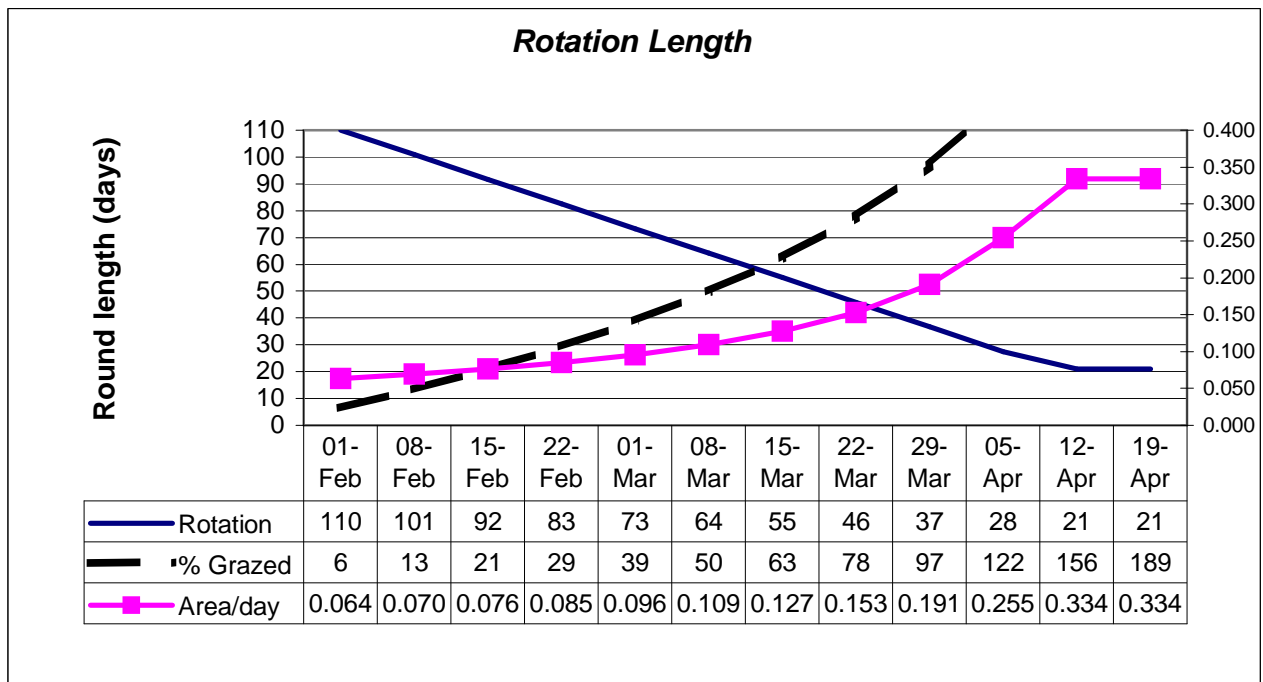
Moorepark Animal & Grassland Research and Innovation Centre		GrazePlan - Grass Measurement Report	
Group	TEAGASC RESEARCH FARMS	Date Produced	06-MAR-12
Farm	Curtins Farm	Effect of stocking rate and calving date on animal performance	
Date	05-MAR-12	Treatment	High SR

Rotation Length :	64	Farm Cover (kg DM/ha) :	927
Grass Allocation /cow (kg grass dry matter/LL	11	Farm Cover (kg DM/LU) :	380
Concentrate Fed (kg/cow) :	4	Current Monthly Fertilizer Rate (kg/ha) :	
Silage Fed (kg DM/cow) :	0	Stock Rate (LU/ha) :	2.44
N Application Rate (units/acre) :		Growth Rate :	37
N Application Rate (kg/ha) :		Farm Demand (kg DM/ha/day) :	27
Residual Height :	3	Target pregrazing yield (kg DM/ha) :	1715
Total Livestock (LU) :	17	Forecast Growth Week 1 and 2:	41      45



**Figure 6. High Stocking Rate Spring Rotation Planner**



- 74% of the High Stocking Rate group have calved. The first cow calved on the 22<sup>nd</sup> of January and grazing commenced on the 4<sup>th</sup> of February, four days later than planned.
- 43% of the farmlet has been grazed, 4% more than planned for this time, like with the low stocking rate, this is not a major concern at present but we do not want to increase this further.
- Cows are currently grazing paddock 12 and will be moving to paddock 1 next which has a cover of 1800kgDM/ha. Based on the spring rotation planner, we should be allocating 0.109ha/day for the coming seven days. This would provide an allocation of 11.5kg grass/day (1800kg \* 0.109ha / 17cows).
- Concentrate is being fed at 4kg/day. This is a citrus pulp/soya hulls/distillers blend with a ufl value of 0.95
- Growth rate for this farmlet over the last 7 days was 37kg/day.

### Whole Farm Situation

1. Between slurry and chemical fertiliser the whole farm has received approximately 63 units of nitrogen so far.

2. Slurry was spread on 33% of the farm on the 13<sup>th</sup> of January at a rate of 2500gls/acre while urea was applied on the 10<sup>th</sup> of February at 23 units/acre to the remainder excluding some of the highest covers. Paddocks grazed before the 18<sup>th</sup> of February received slurry after grazing. Urea was blanket spread on every paddock at a rate of 40 units/acre on the 29<sup>th</sup> February.
3. Cows are on 12-hour allocations with a back-fence. Grazing conditions could not be better. The back fence is used to prevent the re-growth from being grazed.
4. We must take greater care when allocating area to do so accurately as we seem to be allocating more than we intended.
5. Latest milk composition details from the processor are: Fat 5.22%, Protein 3.43%, Lactose 4.85% and SCC 239k.
6. SCC has fallen but we continue to find new cases of mastitis with two more cases detected in the past 7 days. Clusters from infected cows are dipped in paracetic acid post milking.
7. One cow had ketosis this week and is currently being treated. No other health issues.

