

Curtins Farm Walk Notes Tuesday 13-03-12

Low Stocking Rate Group (2.5 Cows/ha)

Situation

Figure 1. Low Stocking Rate Feed Wedge

Moorepark Animal & Grassland Research and Innovation Centre		GrazePlan - Grass Measurement Report
Group : TEAGASC RESEARCH FARMS		Date Produced : 13-MAR-12
Farm : Curtins Farm	Effect of stocking rate and calving date on animal performance	
Date : 12-MAR-12	Treatment : Low SR	

Rotation Length :	51
Grass Allocation /cow (kg grass dry matter/LL)	15
Concentrate Fed (kg/cow) :	1
Silage Fed (kg DM/cow) :	0
N Application Rate (units/acre) :	1
N Application Rate (kg/ha) :	4
Residual Height :	4
Total Livestock (LU) :	21

Farm Cover (kg DM/ha) :	711
Farm Cover (kg DM/LU) :	309
Current Monthly Fertilizer Rate (kg/ha) :	27
Stock Rate (LU/ha) :	2.30
Growth Rate :	27
Farm Demand (kg DM/ha/day) :	34
Target pregrazing yield (kg DM/ha) :	1758
Forecast Growth Week 1 and 2:	29 35

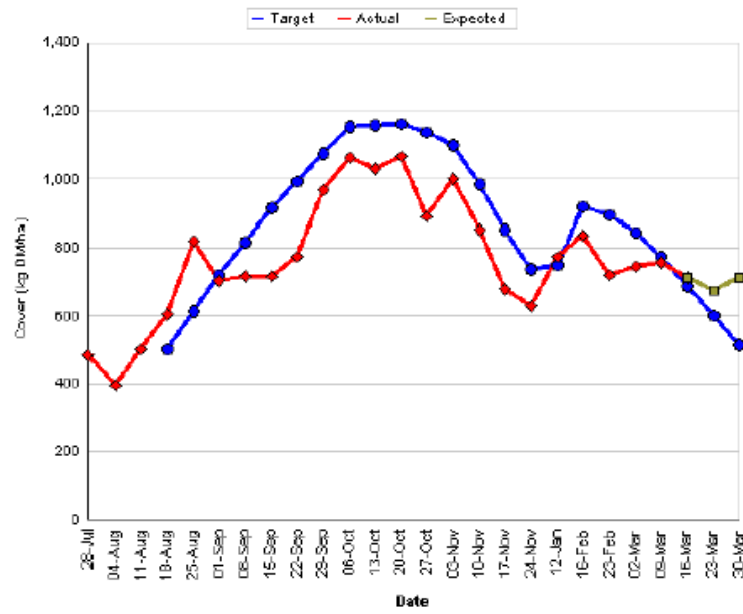
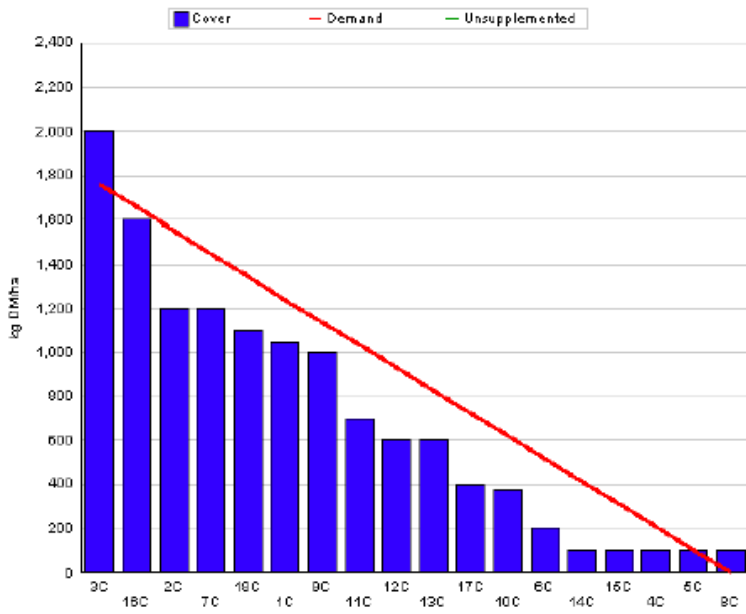
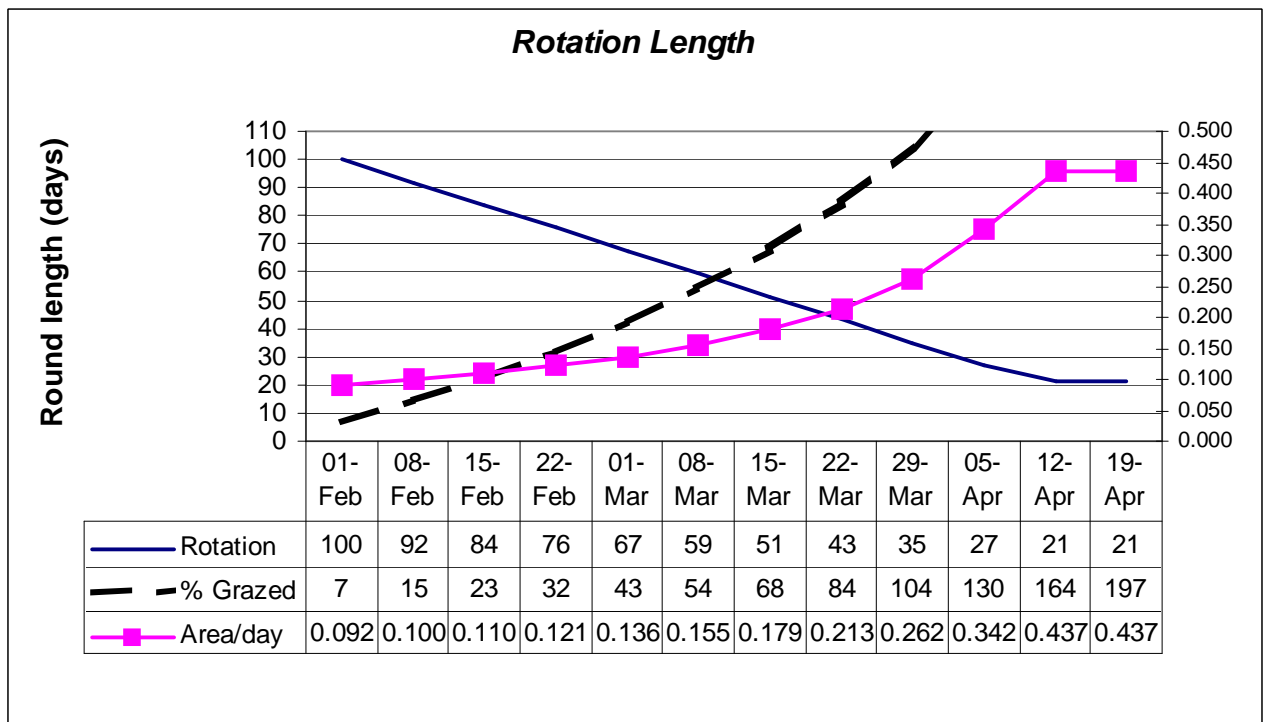


Figure 2. Low Stocking Rate Spring Rotation Planner



- 91% of the Low Stocking Rate group have calved. The first cow calved on the 22nd of January and grazing commenced on the 30th of January.
- 62% of the farmlet has been grazed so far. According to the spring rotation planner we should have 53% grazed by today so we remain ahead of target. The planned start of the second round was the 4th of April. The fact that we have more area grazed than planned means that the second rotation will commence earlier on the 1st of April. This is not a concern at present as average farm cover is on target and growth rates are such as to support an earlier second rotation.
- Cows are currently grazing paddock 3. Average pre-grazing yield for the next seven days will be approximately 1800kg/ha. According to the spring rotation planner, we should be allocating 0.179ha/day for the coming seven days. This would provide an allocation of 15.3kg grass/day (1800kg * 0.179ha / 21cows).
- Cows are getting 1kg of concentrate per day. This is a citrus pulp/soya hulls/distillers blend with a ufl value of 0.95
- Growth rate for the past 7 days was 27kg/day.

High Stocking Rate Group (3.3 Cows/ha)

Situation

Figure 5. High Stocking Rate Feed Wedge

Moorepark Animal & Grassland Research and Innovation Centre		GrazePlan - Grass Measurement Report	
Group	TEAGASC RESEARCH FARMS	Date Produced 13-MAR-12	
Farm	Curtins Farm	Effect of stocking rate and calving date on animal performance	
Date	12-MAR-12	Treatment : High SR	
Rotation Length :	55	Farm Cover (kg DM/ha) :	934
Grass Allocation /cow (kg grass dry matter/LL	14	Farm Cover (kg DM/LU) :	362
Concentrate Fed (kg/cow) :	0	Current Monthly Fertilizer Rate (kg/ha) :	
Silage Fed (kg DM/cow) :	0	Stock Rate (LU/ha) :	2.58
N Application Rate (units/acre) :		Growth Rate :	36
N Application Rate (kg/ha) :		Farm Demand (kg DM/ha/day) :	36
Residual Height :	3	Target pregrazing yield (kg DM/ha) :	1986
Total Livestock (LU) :	18	Forecast Growth Week 1 and 2:	39 46

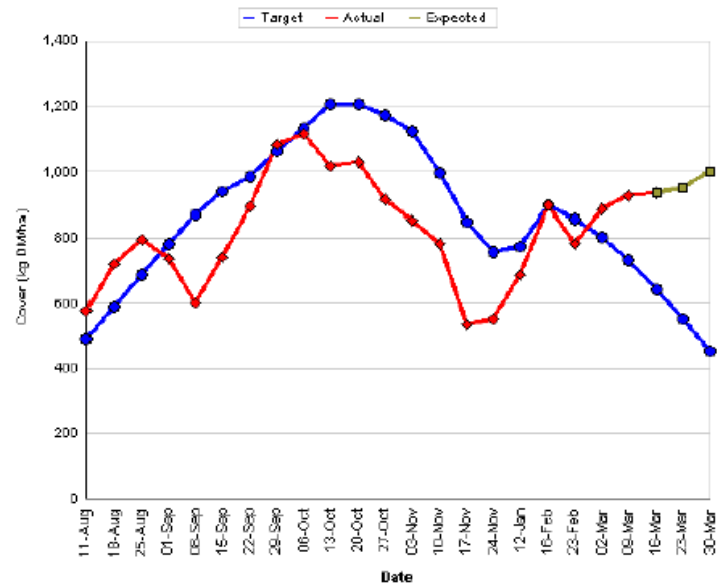
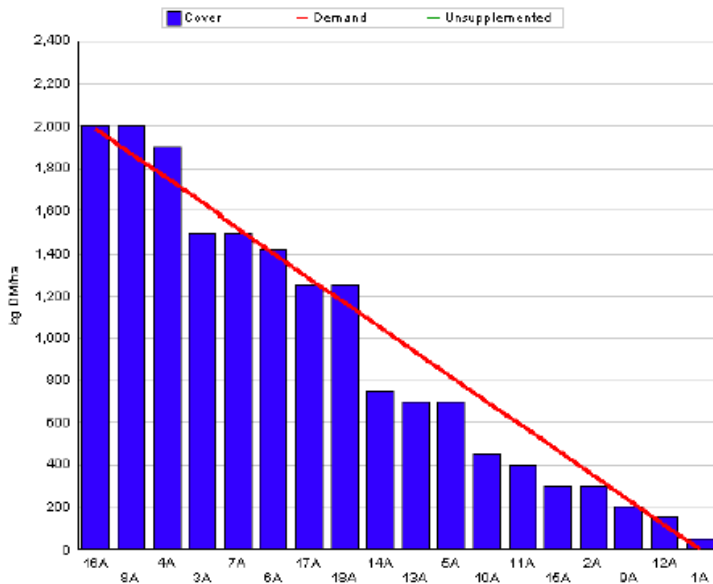
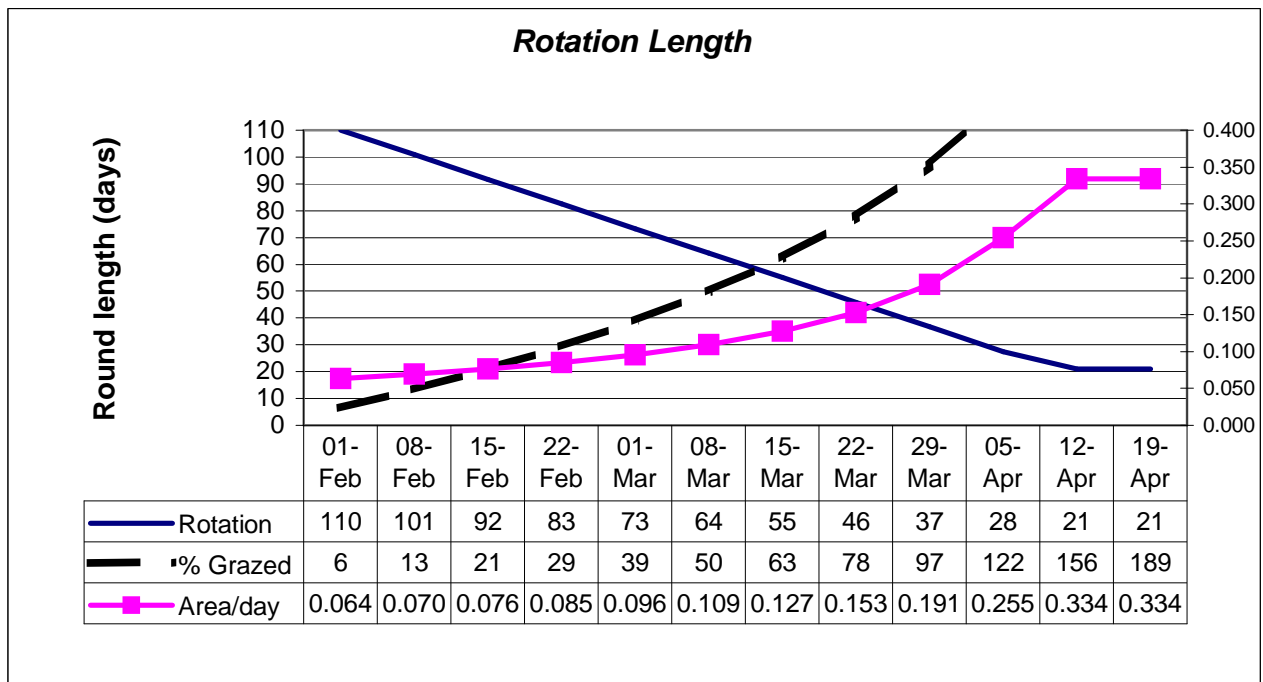


Figure 6. High Stocking Rate Spring Rotation Planner



- 78% of the High Stocking Rate group have calved. The first cow calved on the 22nd of January and grazing commenced on the 4th of February, four days later than planned.
- 55% of the farmlet has been grazed, 7% more than planned for this time. Average farm cover is exceptionally high at 934kg/ha due to high growth rates over the past few weeks
- Cows are currently grazing paddock 5 and will be moving to paddock 16 next which has a cover of 2000kgDM/ha. Based on the spring rotation planner, we should be allocating 0.127ha/day for the coming seven days. This would provide an allocation of 14kg grass/day (2000kg * 0.127ha / 18cows).
- Concentrate has been removed from the diet.
- Growth rate for this farmlet over the last 7 days was 36kg/day.

Whole Farm Situation

1. Between slurry and chemical fertiliser the whole farm has received approximately 63 units of nitrogen so far.
2. Slurry was spread on 33% of the farm on the 13th of January at a rate of 2500gls/acre while urea was applied on the 10th of February at 23 units/acre to the remainder excluding some

of the highest covers. Paddocks grazed before the 18th of February received slurry after grazing. Urea was blanket spread on every paddock at a rate of 40 units/acre on the 29th February.

3. Cows are on 12-hour allocations with a back-fence. Grazing conditions could not be better. The back fence is used to prevent the re-growth from being grazed.
4. Latest milk composition details from the processor are: Fat 4.98%, Protein 3.32%, Lactose 4.84% and SCC 180k.
5. Magnesium, selenium, cobalt, copper, zinc and iodine are being supplemented daily through the water supply via a Dosatron pump.

