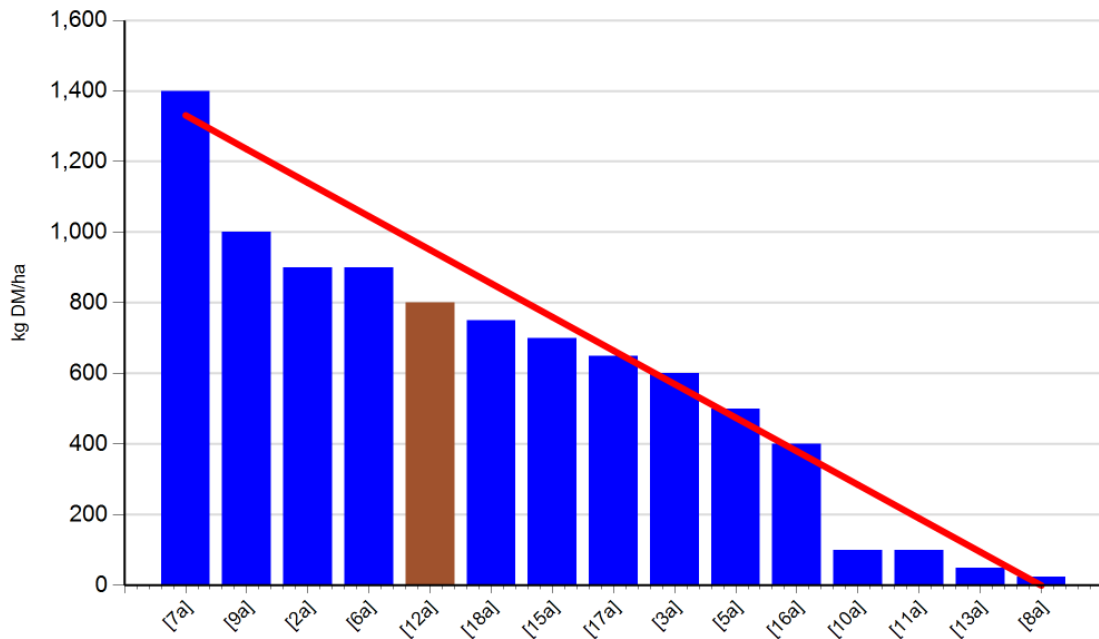


Farm Walk Notes 24/06/13

High SR (3.28 cows/ha)

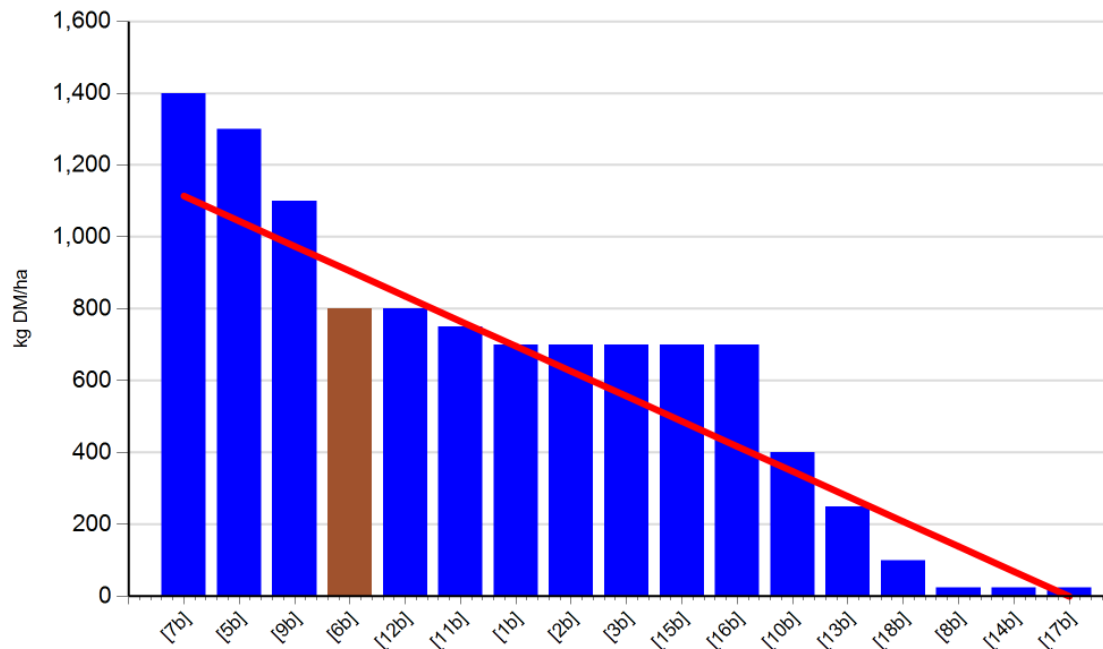
- Grass growth – 67 kg DM/ha/day
- Farm cover – 601 kg DM/ha (152 kg DM/LU)
- Rotation length – 21 days



- We were pleased with grass growth this week at 67 kg. This was an increase of 20 kg/day from last week.
- We are hitting the desired residual of 3.5-4 cm. This is mainly due to the decision to graze lower grass covers, maximising utilisation
- The high SR herd have a daily grass allocation of 16 kg with 0.2 kg concentrate. Grass allocation is on a 24 hour basis.
- We are following the grazing herd with 20 units of sulpha-CAN.

Medium SR (2.94 cows/ha)

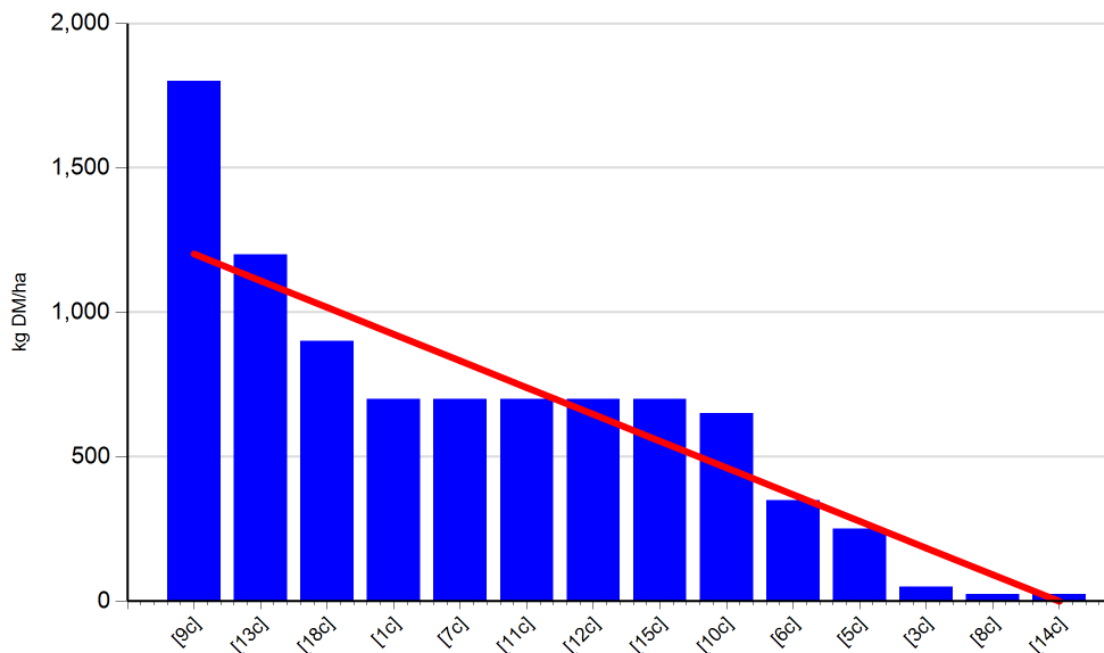
- Grass growth – 78 kg DM/ha/day
- Farm cover – 642 kg DM/ha (206kg DM/LU)
- Rotation length – 21 days



- We were pleased with grass growth of 78 kg this week, increasing by over 20 kg/day from last week.
- The medium SR cows are achieving target residual of 4-4.5 cm. Cows continue to graze lower grass cover in order to maximise utilisation.
- The medium SR herd have a daily grass allocation of 17 kg with 0.2 kg concentrate. Grass allocation is on a 24 hour basis.
- We are following the grazing herd with 20 units of sulphha-CAN.
- Due to the increase in growth this week, growth has exceeded demand. One paddock was taken out of rotation in order to maintain lower the farm cover and high quality sward.

Low SR (2.52 cows/ha)

- Grass growth – 83 kg DM/ha/day
- Farm cover – 650 kg DM/ha (204 kg DM/LU)
- Rotation length – 21 days



- We were delighted with the low SR growth of 83 kg this week, increasing by 50 kg/day from last week.
- The low SR cows are achieving target residual of 4.5-5 cm.
- The low SR herd have a daily grass allocation of 18 kg with 0.2 kg concentrate. Grass allocation is on a 24 hour basis.
- We are following the grazing herd with 20 units of sulpha-CAN.
- Due to the increase in growth this week, growth has exceeded demand. One paddock was taken out of rotation in order to maintain lower the farm cover and high quality sward.

Overall farm situation

- Grass DM was recorded at 18% on the farm walk on Monday morning.
- We are applying Mg and minerals using the doseatron and concentrate supplementation is at 0.2 kg per cow per day.
- Milk yield is on average 21 kg per day at 4.64% fat, 3.6% protein and 4.7% lactose. SCC is at 151,000.