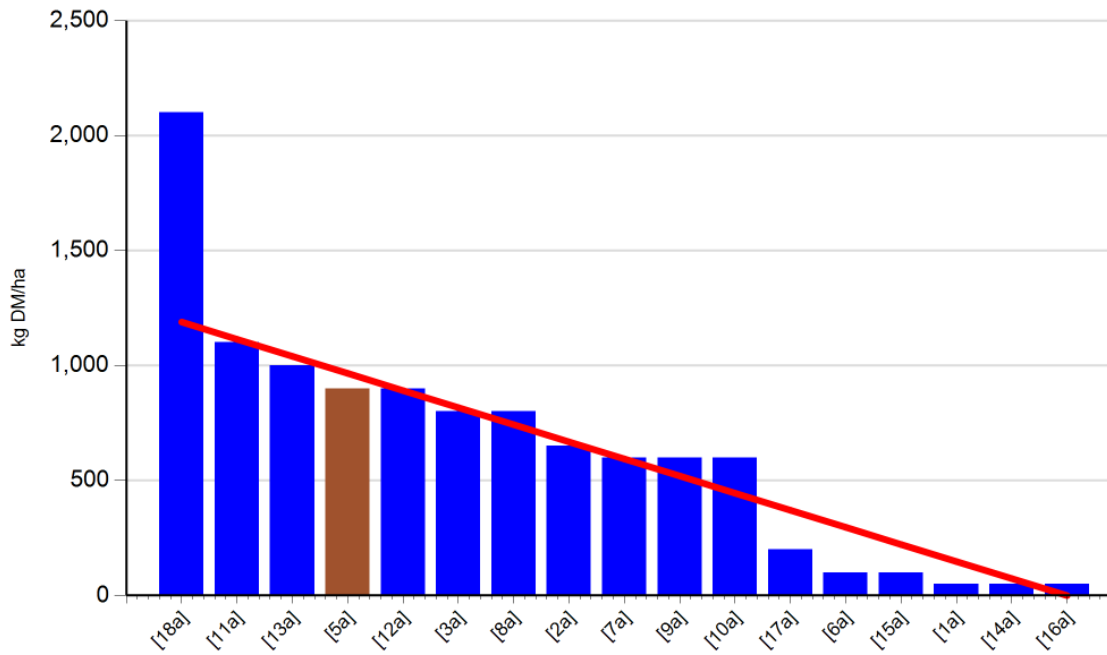


# Curtins Farm Walk Notes 15/07/13

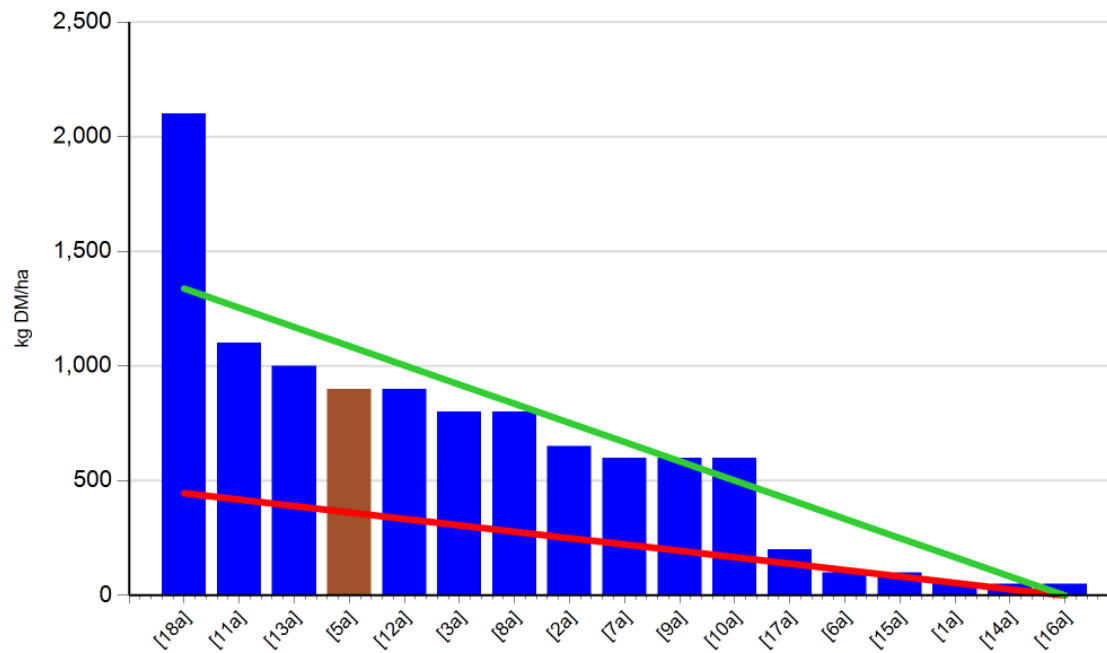
## High SR (3.28 cows/ha)

- Grass growth – 45 kg DM/ha/day
- Farm cover – 610 kg DM/ha (172 kg DM/LU)
- Rotation length – Increased to 45 days this week

### Feed Wedge



### Feed Wedge with Supplementation



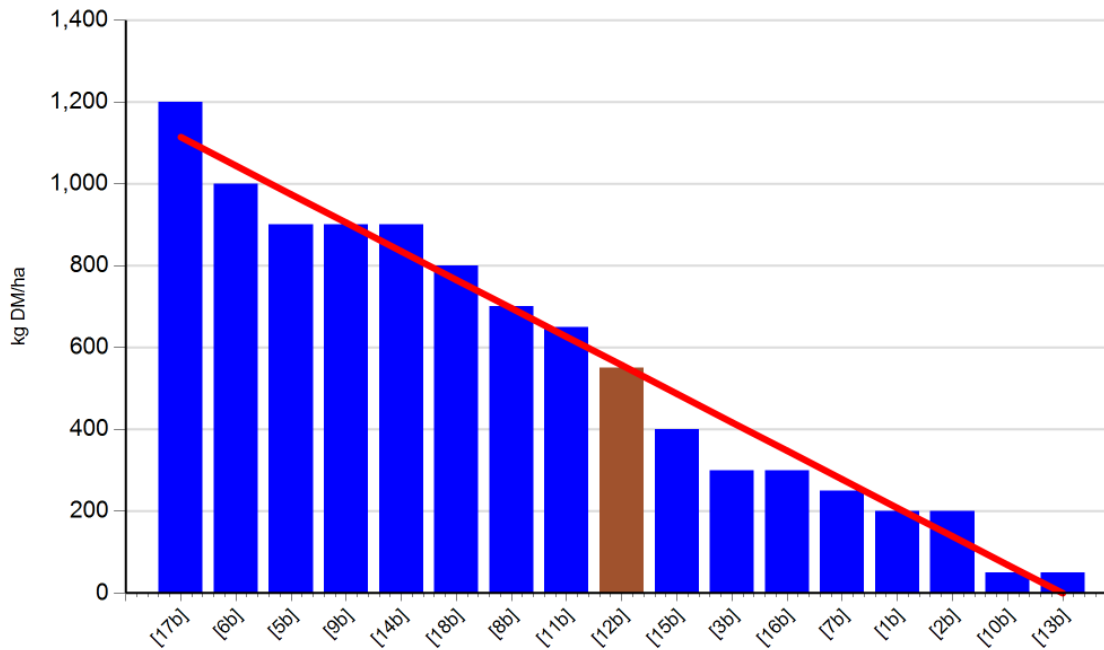
- We were pleased with grass growth of 45 kg this week. Although this is much lower than typical growth for this time of year, it is exceptional given the current weather conditions. Growth is expected to decrease in the coming week with no rain forecasted.
- The cows will graze low covers of 1,200 kg DM and less this week.
- Cows are reaching residuals of 3.7 - 4 cm. They are struggling to hit targets in some paddocks as the sward base has become coarse.
- Rotation length has increased to 45 days this week in an effort to keep grass in the diet. This is being achieved through supplementation.
- The high SR herd have a daily grass allocation of 6kg this week. A high level of supplementation is being added to meet the feed deficit – 6 kg of concentrates and 6 kg of baled silage.
- We are following the grazing herd with 15 units of sulphha-CAN.
- All paddocks that have been taken out for silage in the last few weeks are back in the rotation.

The second 'Feed Wedge' represents the lower demand required when supplementary feed is fed. The addition of silage and concentrates lowers the overall farm demand from 57 kg DM/ha/day to 21 kg DM/ha/day. Although it appears there is sufficient grass available to feed the normal allocation of 16 kg, we are conscious that there is no rain and therefore little growth expected in the coming days. The use of supplementation is a method of rationing the grass that is available on the farm.

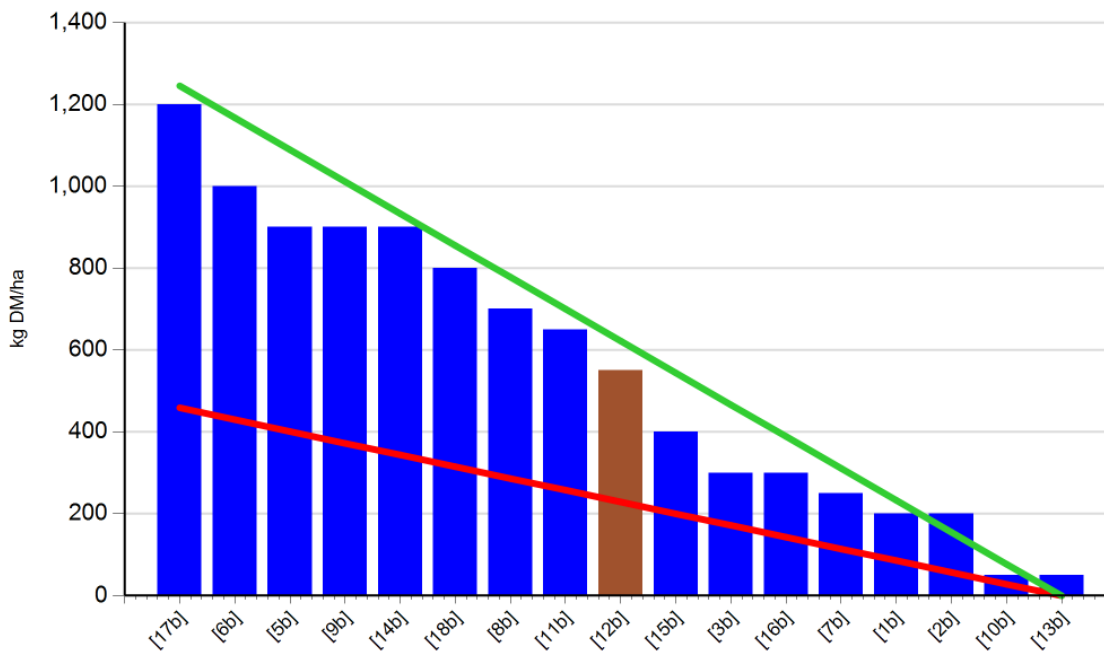
## Medium SR (2.94 cows/ha)

- Grass growth – 39 kg DM/ha/day
- Farm cover – 542 kg DM/ha (174 kg DM/LU)
- Rotation length – Increased to 45 days this week

### Feed Wedge



### Feed Wedge with Supplementation



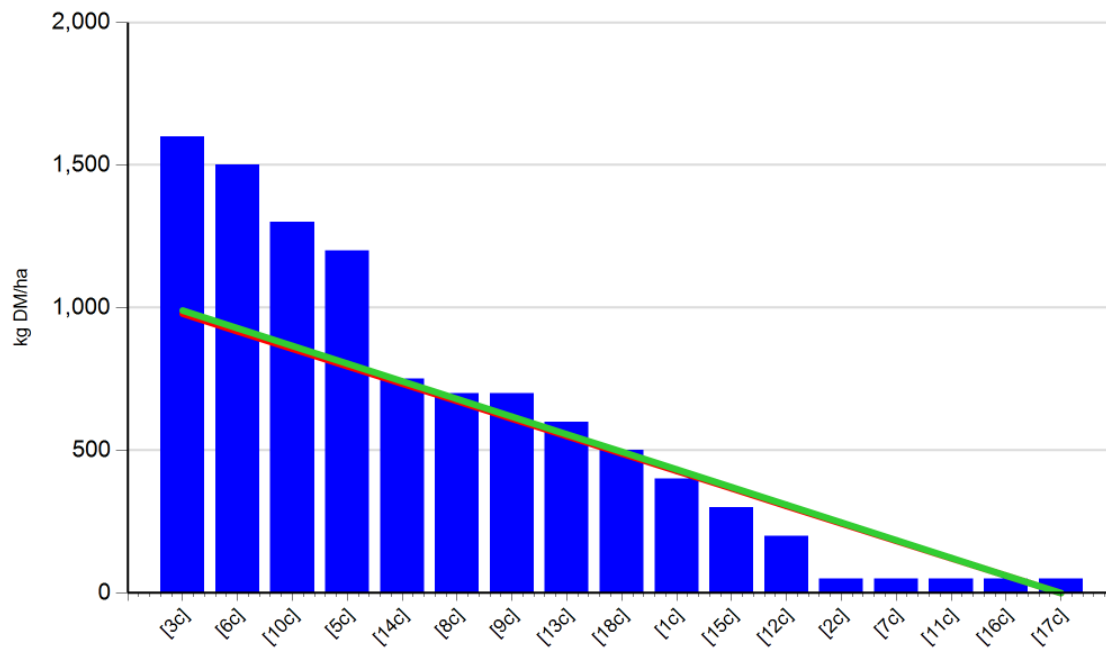
- We were pleased with grass growth of 39 kg this week. Although this is much lower than typical growth for this time of year, it is exceptional given the current weather conditions. Growth is expected to decrease in the coming week with no rain forecasted.
- The cows will graze low covers of 1,200 kg DM and less this week.
- Cows are grazing out swards very well and achieving residuals under 4cm. This is due to the low pre-grazing covers they are grazing.
- Rotation length has increased to 45 days this week in an effort to keep grass in the diet. This is being achieved through supplementation.
- The medium SR herd have a daily grass allocation of 7 kg this week. A high level of supplementation is being added to meet the feed deficit – 6 kg of concentrates and 6 kg of baled silage.
- We are following the grazing herd with 15 units of sulphha-CAN.
- All paddocks that have been taken out for silage in the last few weeks are back in the rotation.

The second 'Feed Wedge' represents the lower demand required when supplementary feed is fed. The addition of silage and concentrates lowers the overall farm demand from 53 kg DM/ha/day to 22 kg DM/ha/day. Although it appears there is sufficient grass available to feed the normal allocation of 17 kg, we are conscious that there is no rain and therefore little growth expected in the coming days. The use of supplementation is a method of rationing the grass that is available on the farm.

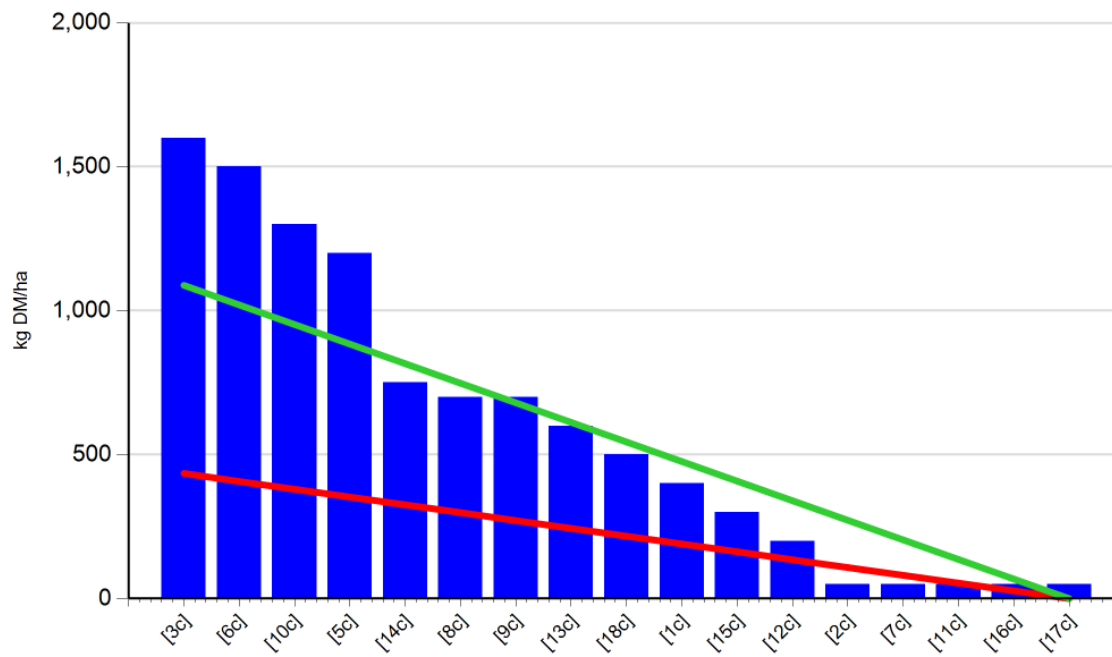
## Low SR (2.52 cows/ha)

- Grass growth – 48 kg DM/ha/day
- Farm cover – 557 kg DM/ha (215 kg DM/LU)
- Rotation length – Increased to 45 days this week

### Feed Wedge



### Feed Wedge with Supplementation



- We were pleased with grass growth of 48 kg this week. Although this is much lower than typical growth for this time of year, it is exceptional given the current weather conditions. Growth is expected to decrease in the coming week with no rain forecasted.
- Cows are grazing out swards well and achieving residuals under 4.5 cm. This is due to the low pre-grazing covers they are grazing.
- Rotation length has increased to 45 days this week in an effort to keep grass in the diet. This is being achieved through supplementation.
- The low SR herd have a daily grass allocation of 8 kg this week. A high level of supplementation is being added to meet the feed deficit – 6 kg of concentrates and 6 kg of baled silage.
- We are following the grazing herd with 15 units of sulphha-CAN.
- All paddocks that have been taken out for silage in the last few weeks are back in the rotation.

The second 'Feed Wedge' represents the lower demand required when supplementary feed is fed. The addition of silage and concentrates lowers the overall farm demand from 47 kg DM/ha/day to 21 kg DM/ha/day. Although it appears there is sufficient grass available to feed the normal allocation of 18 kg, we are conscious that there is no rain and therefore little growth expected in the coming days. The use of supplementation is a method of rationing the grass that is available on the farm.

## **Overall farm situation**

- Grass DM was recorded at 23.4% on the farm walk on Monday morning.
- Supplementation of concentrate at 6 kg and silage at 6 kg per cow per day.
- Milk yield is on average 19 kg per day at 4.43% fat, 3.545% protein and 4.69% lactose. SCC is at 124.