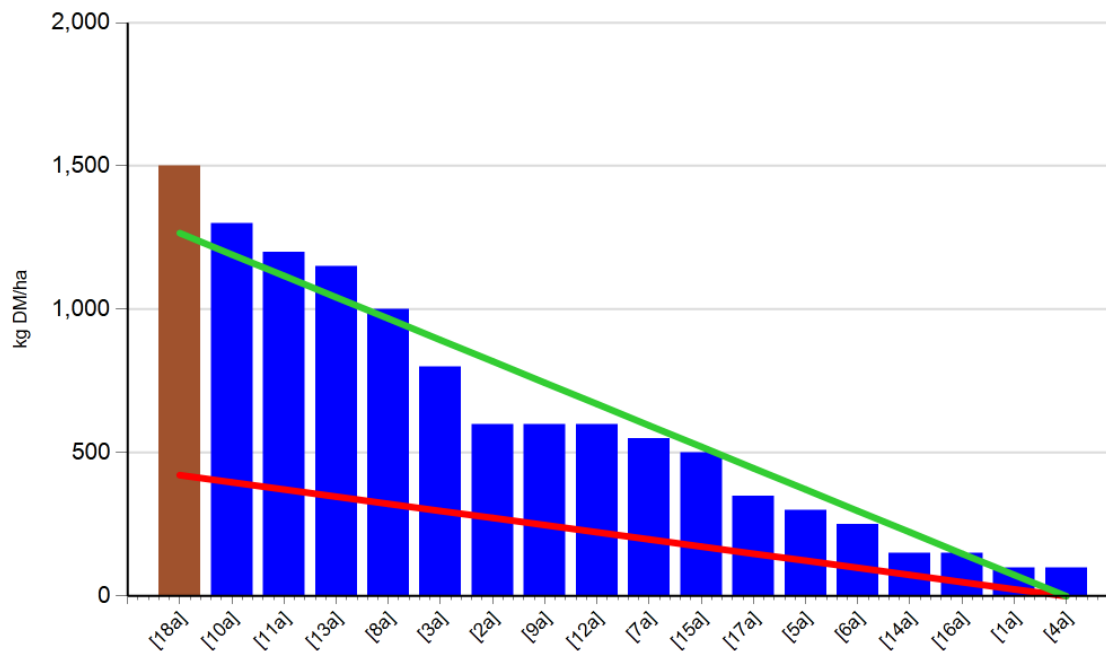


## Curtins Farm Walk Notes 22/07/13

### High SR (3.28 cows/ha)

- Grass growth – 25 kg DM/ha/day
- Farm cover – 619 kg DM/ha (185 kg DM/LU)
- Rotation length – 45 days

### Feed Wedge

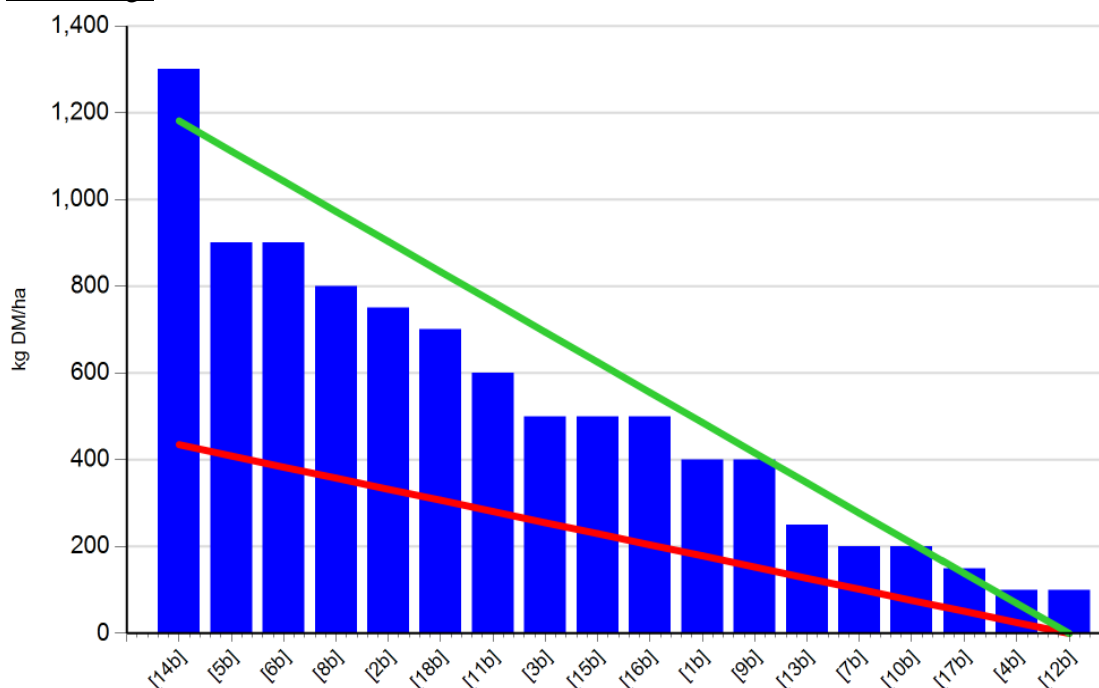


- Grass growth was satisfactory this week at 25kg. Growth exceeds herd demand of 20kg (when supplementary feed is included). Although the wedge appears to be almost back to where we would like it to be, it does not justify taking out the supplementation. If we get rain this week and achieve high growth, we will review supplementation towards the weekend.
- Cows are struggling to hit target residual of 3.5 cm due to the high level of supplementation and the coarse sward base.
- Rotation length is at 45 days.
- The high SR herd have a daily grass allocation of 6kg this week. A high level of supplementation is being added to meet the feed deficit – 6 kg of concentrates and 6 kg of baled silage.
- We are following the grazing herd with 15 units of sulphha-CAN.
- The reseeded area is coming on well and we expect to graze it in the next 10 days.

## Medium SR (2.94 cows/ha)

- Grass growth –30 kg DM/ha/day
- Farm cover – 501 kg DM/ha (169 kg DM/LU)
- Rotation length – 45 days

### Feed Wedge

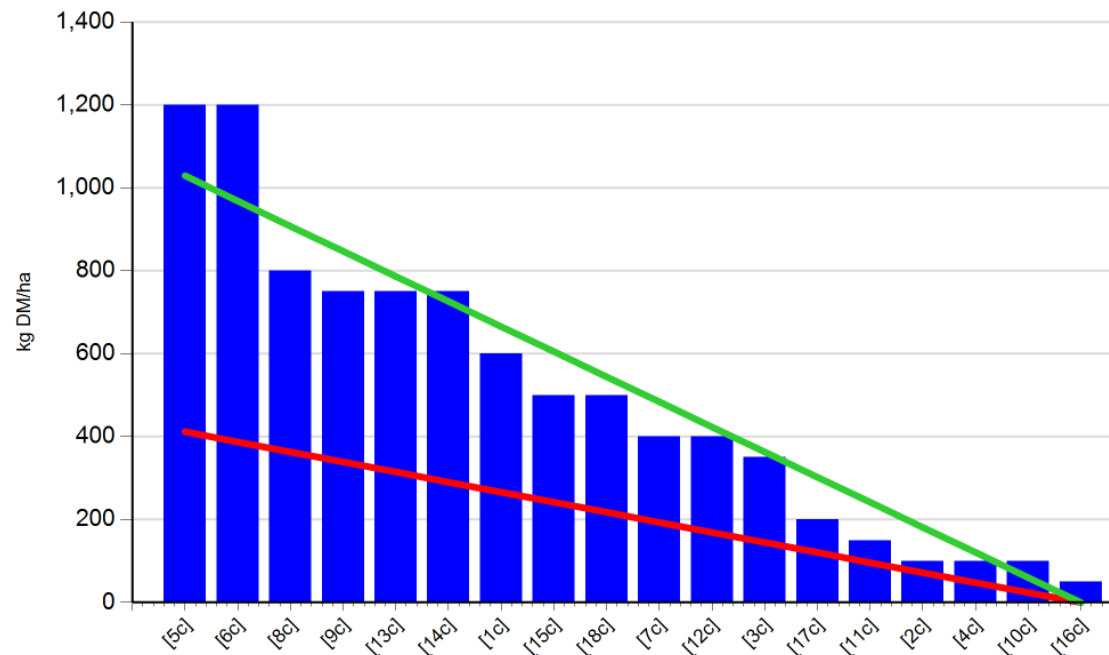


- Grass growth was satisfactory this week at 30kg. Growth exceeds herd demand of 21kg (when supplementary feed is included). Although the wedge appears to be almost back to where we would like it to be, it does not justify taking out the supplementation. If we get rain this week and achieve high growth, we will review supplementation towards the weekend.
- Cows are hitting target residual cover of 4 cm.
- Rotation length is at 45 days.
- The high SR herd have a daily grass allocation of 7kg this week. A high level of supplementation is being added to meet the feed deficit – 6 kg of concentrates and 6 kg of baled silage.
- We are following the grazing herd with 15 units of sulphha-CAN.
- The reseeded area is coming on well and we expect to graze it in about 10 days.

## Low SR (2.52 cows/ha)

- Grass growth – 16kg DM/ha/day
- Farm cover – 481kg DM/ha (196 kg DM/LU)
- Rotation length – 45 days

### Feed Wedge



- Grass growth was poor this week at 16kg. Although the wedge appears to be almost back to where we would like it to be, it does not justify taking out the supplementation. If we get rain this week and achieve high growth, we will review supplementation towards the weekend.
- Cows are hitting target residual cover of 4.5 cm.
- Rotation length is at 45 days.
- The high SR herd have a daily grass allocation of 8 kg this week. A high level of supplementation is being added to meet the feed deficit – 6 kg of concentrates and 6 kg of baled silage.
- We are following the grazing herd with 15 units of sulphha-CAN.
- The reseeded area is coming on well and we expect to graze it in about 10 days.

## **Overall farm situation**

- Grass DM was recorded at 25% on the farm walk on Monday morning.
- Supplementation of concentrate at 6 kg and silage at 6 kg per cow per day.
- Milk yield is on average 17.5 litres per day at 4.53% fat, 3.65% protein and 4.71% lactose. SCC is at 124,000.