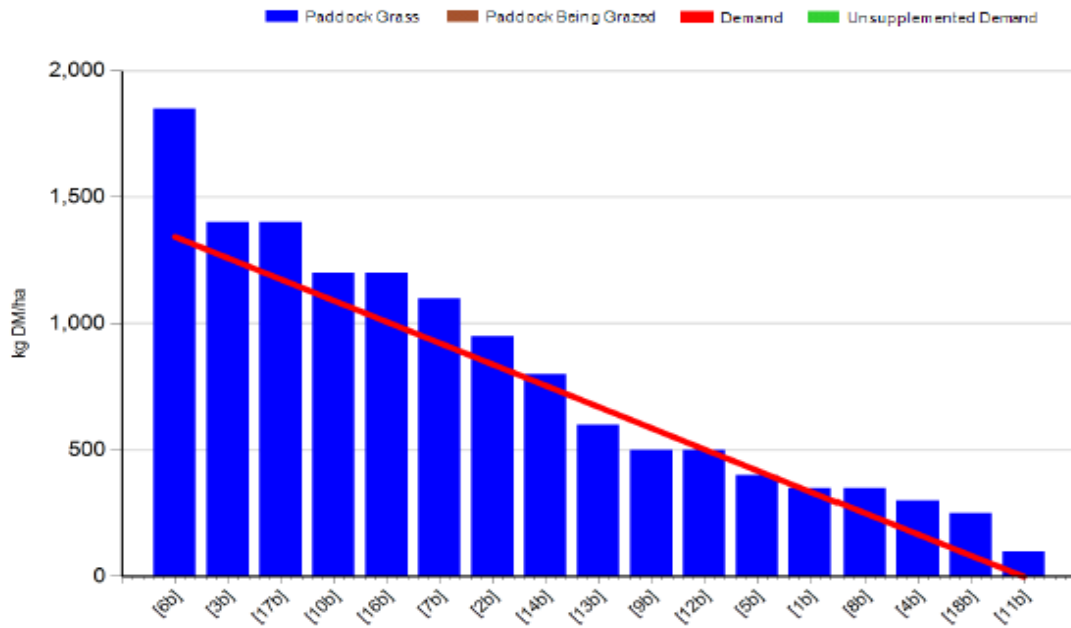


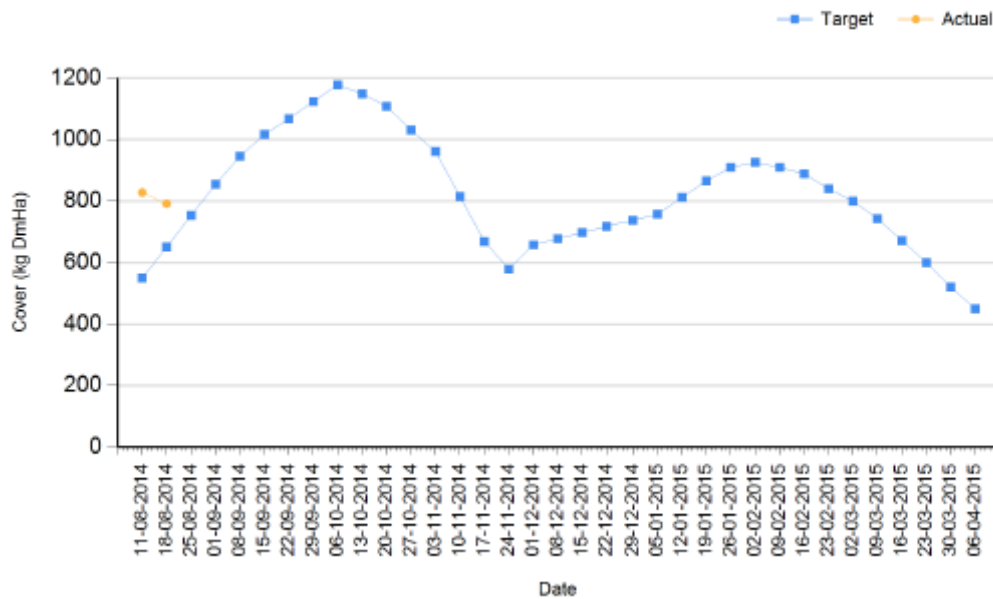
18/08/14 Curtins Farm weekly Farm Walk Notes

Medium SR (2.94 cows/ha)

- Grass growth – 48kg DM/ha/day
- Farm cover – 792kg DM/ha (251 kg DM/LU)
- Rotation length – 25 days
- Current stocking rate 3.34 cows/Ha



Autumn Budget



- Grass growth was good on the farm last week but we are starting to see it pull back to more normal levels for the time of year, we have been very lucky here we have got rain when we needed it and the grass has responded very well to the warm growing conditions and the rain.
- Cows are hitting target residual cover of 4 cm grass quality is good.
- Rotation length is at 25 days our plan is to extend this every week by two days and to start building our Autumn cover now.
- The medium SR herd have a daily grass allocation of 17kg this week plus 0.2 kg of a 14% dairy ration per day.
- We are following the grazing herd with 18 units of sulphha-CAN.
- All cows are getting there mineral requirement in the water system.

Overall farm situation

Grass DM was recorded at 18% on the farm walk on Monday morning.

Milk yield is on average 17 litres per day at 4.82% fat, 3.71% protein. SCC is at 111,000.

TBC 5K

Breeding season is now finished and early scanning results indicate a successful breeding season with an estimated empty rate of 9/10%. 13 week breeding season.

I have included our Autumn Budget planner in this weeks notes our plan is to stick to plan as closely as possible to allow us produce as much milk as possible of grass into the later stages of the season.