

12/10/15 Curtins Farm weekly Farm Walk Notes

Medium SR (2.94 cows/ha)

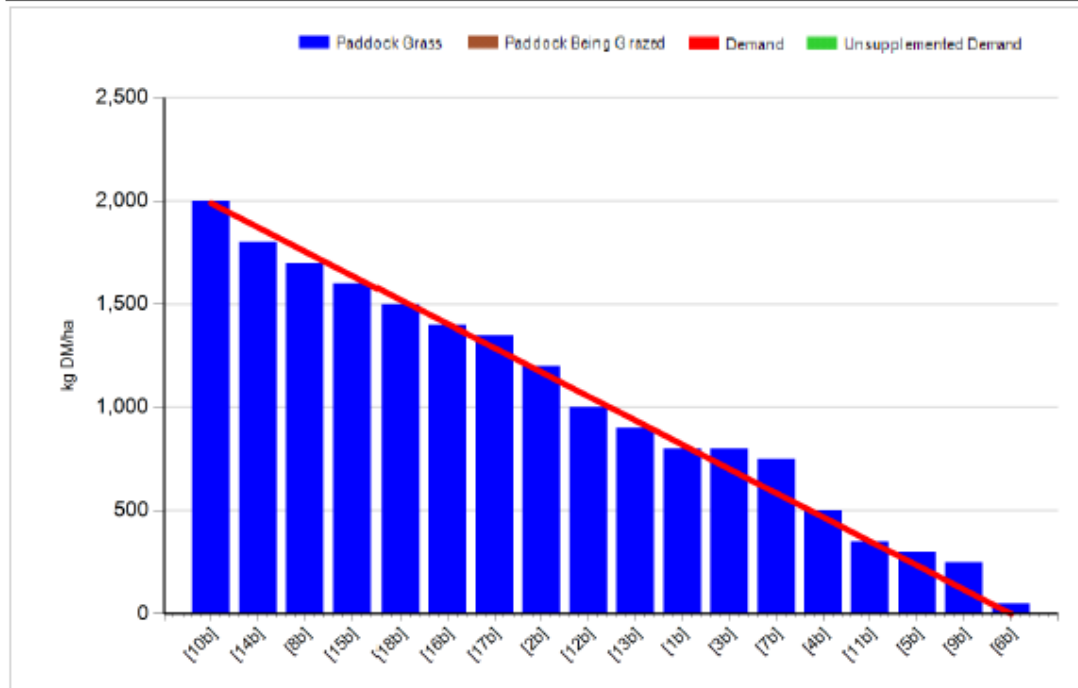
Group:	Cover Date: 12/10/2015
Farm: Curtins Farm	Treatment: Medium stocking rate

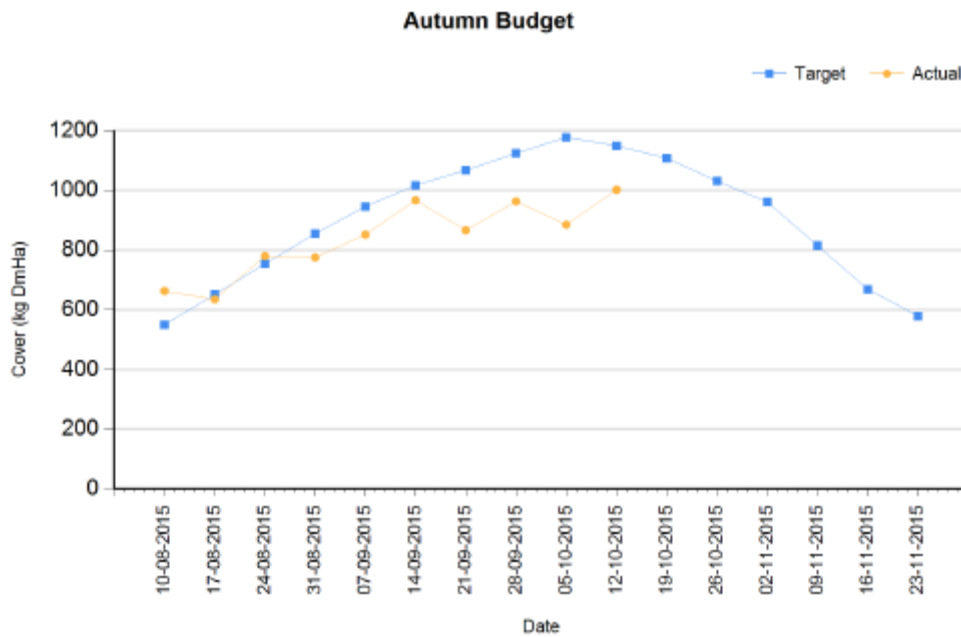
Management Decisions

Rotation Length (days):	42	Silage Fed (kg DM/cow):	
Grass Allocation/Cow (kg DM/cow):	16.0	Residual Height (cm):	4.0
No. of Cows:	47		
Concentrate Fed (kg/cow):	1.0		

Cover Parameters

Grass Allocation/LU (kg DM/LU):	16.0	Growth Rate:	53
Total Livestock (LU):	47.0	Farm Demand (kg DM/ha/day):	47
Farm Cover (kg DM/ha):	1002	Target Pre-grazing yield (kg DM/ha):	1989
Farm Cover (kg DM/LU):	339	Days Ahead:	21
Stocking Rate (LU/ha):	2.96	LW/ha (Liveweight/ha):	0





- Grass growth is 53kg/dm/day on average this week, I am very happy with this level of growth as it is helping close the gap in our Autumn planner.
- Rotation length has being stretched out to 42 days from now on.
- Cows are hitting target residual cover of 4 cm to 4.5cm, this has is being made easy with the excellent grazing condition.
- The medium SR herd have a daily grass allocation of 16kg this week plus 1kg of a 14% dairy ration per day.
- Nitrogen spreading has ceased wit 248kg of N spread to date.
- Dirty water is being applied to all grazed paddocks at a rate of 2500 gallons to the acre.

Overall farm situation

Grass DM was recorded at 13% on the farm walk on Monday morning.

Milk yield is on average 15 litres per day at 5.35% fat, 4.29% protein. SCC is at 97k. TBC 6K lactose 4.67%

Breeding season is now finished and early scanning results indicate a average breeding season with an empty rate of 17% recorded.

I have included our Autumn Budget planner in this weeks notes our plan is to stick to plan as closely as possible to allow us produce as much milk as possible off grass into the later stages of the season.

