

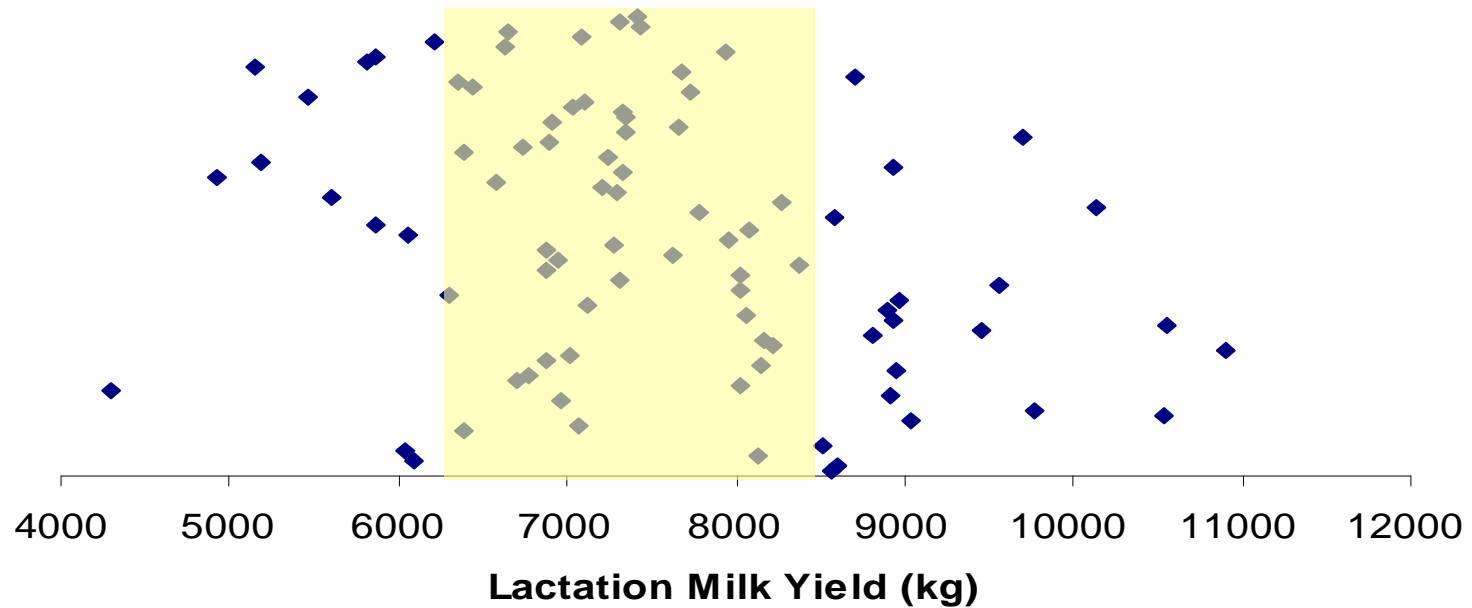
# Johnstown Castle- Herd Update

## Sep 15<sup>th</sup> 2013



The Irish Agriculture and Food Development Authority

## Johnstown Herd Details - Milk Yield per Cow





We want...

- High Fertility
- High milk solids
- 160 -180kg milk
- Functional cows

Animal Group	Num of Cows	Milk Kg Fat Prot %	Surv% CI Days	Milk % Cont	Fertility % Cont	Calv % Cont	Beef % Cont	Maint % Cont	Mgmt % Cont	Health % Cont	EBI €
Cows with EBI	112	189		€ 49	€ 71	€ 24	€ -4	€ 2	€ 1	€ 2	€ 145
Missing EBI*	0	9.3 0.04	2.0	32.1%	46.5%	15.4%	-2.5%	1.5%	0.8%	1.1%	
Total Cows	112	9.1 0.05	-4.0								
1st Lactation	44	188		€ 56	€ 68	€ 26	€ -6	€ 2	€ 0	€ 2	€ 149
		11.0 0.08	1.7	35.1%	42.3%	16.3%	-3.7%	1.2%	0.1%	1.2%	
		9.9 0.07	-4.0								
2nd Lactation	34	210		€ 46	€ 69	€ 23	€ -2	€ 2	€ 3	€ 0	€ 141
		8.7 0.02	2.0	31.8%	47.3%	16%	-1.6%	1.2%	1.9%	0.2%	
		9.0 0.04	-3.8								
3rd Lactation	10	114		€ 41	€ 68	€ 24	€ -2	€ 2	€ 1	€ 3	€ 137
		7.2 0.06	2.1	28.9%	48.3%	17.2%	-1.6%	1.1%	0.8%	2.1%	
		7.0 0.06	-3.7								
4th Lactation	7	170		€ 51	€ 95	€ 22	€ -4	€ 6	€ 0	€ 1	€ 172
		11.1 0.09	2.7	28.5%	53%	12.1%	-2.1%	3.5%	-0.1%	0.7%	
		8.9 0.06	-5.3								
5th Lactation (+)	17	203		€ 40	€ 75	€ 18	€ -3	€ 3	€ 2	€ 3	€ 138
		6.5 -0.02	2.2	27.8%	52.4%	12.5%	-2%	2.1%	1.4%	1.9%	
		8.2 0.03	-4.1								

## 2. Dairy Youngstock

12 Calves	48	169		€ 59	€ 83	€ 31	€ -9	€ 4	€ 1	€ 2	€ 171
Missing EBI*	0	11.7 0.10	2.3	31%	43.7%	16.4%	-5%	2.2%	0.7%	1.1%	
Total Calves	48	9.9 0.09	-4.6								
11 Calves	35	180		€ 54	€ 78	€ 28	€ -4	€ 0	€ 1	€ 3	€ 160
Missing EBI*	0	10.4 0.07	2.1	32%	46.6%	16.6%	-2.4%	-0.2%	0.7%	1.5%	
Total Calves	35	9.5 0.07	-4.5								



The Irish Agriculture and Food Development Authority

## Effect of calving interval on milk revenue losses for 100 cow herd

Herd Calving Interval	Herd Base <sup>2</sup> Production Level (litres)		
	6000	7000	8000
401	€9,660 <sup>3</sup>	€7,320	€4,380
422	€16,770	€13,620	€9,060
443	€23,760	€20,700	€14,970
464	€30,570	€28,020	€20,490
485	€37,290	€35,370	€26,520

<sup>1</sup>Relative to a 375 day calving interval

<sup>2</sup>Based on 305-d yield for a herd with 370 day calving interval

<sup>3</sup>Based on a 30cpl annualised milk price

Our objective is a 370 d calving interval  
Current 383 days



## Experiment 2012-14: Feed to Yield Trial on Split Calving Herds

### Objective:

‘To compare performance and profit of split calving herds managed under ***feed-to-yield*** or ***feed-to-budget*** systems’

# Feed to Yield System - “Reds”

‘Meet the nutritional requirements of the INDIVIDUAL COW while managing the system to maximise use of quality forage’

Stocking rate 3.1 cows per ha

## Indoor diet –

- Flat rate to stated yield e.g. 22 litres
- Supplement on a yield basis thereafter e.g. 0.5kg per litre to a threshold value

## At pasture –

- Estimate contribution of base pasture diet
- Use supplements to meet yield potential
- Maintain sward quality by managing pre-grazing yield

# Feed to Budget System - “Greens”

‘Meet nutritional requirements of THE HERD by maximising utilisation of forage on the grazing block and strategic use of supplements to manage feed deficits as dictated by budget’

Stocking rate 3.1 cows per ha

## Indoor diet –

- Flat rate meal feeding of fresh and stale cows (e.g. 7kg plus 3kg)
- Additional forage (e.g. maize) imported as per winter forage deficit

## At pasture –

- Conventional pasture budgeting practices
- Use supplement to address pasture deficits
- Maintain sward quality by standard management

# Systems compared

	Feed to Budget	Feed to Yield
Winter	13kg silage Fresh 7kg Stale 4kg meal	13kg silage 21 litres plus 0.5kg per litre
Spring	Spring Rotation Plan Flat rate meal	Spring Rotation Plan 22 litres + 0.5kg per litre
Summer	Grass wedge Flat rate meal	Grass wedge 25 litres + 0.5kg per litre
Autumn	Autumn budget 70:30 Flat rate meal feeding	Autumn budget 70:30 21 litres + 0.5kg per litre

48 cows per group, mean calving date 10<sup>th</sup> Oct and 20<sup>th</sup> Feb



## Current Situation- Autumn Calving (in milk)

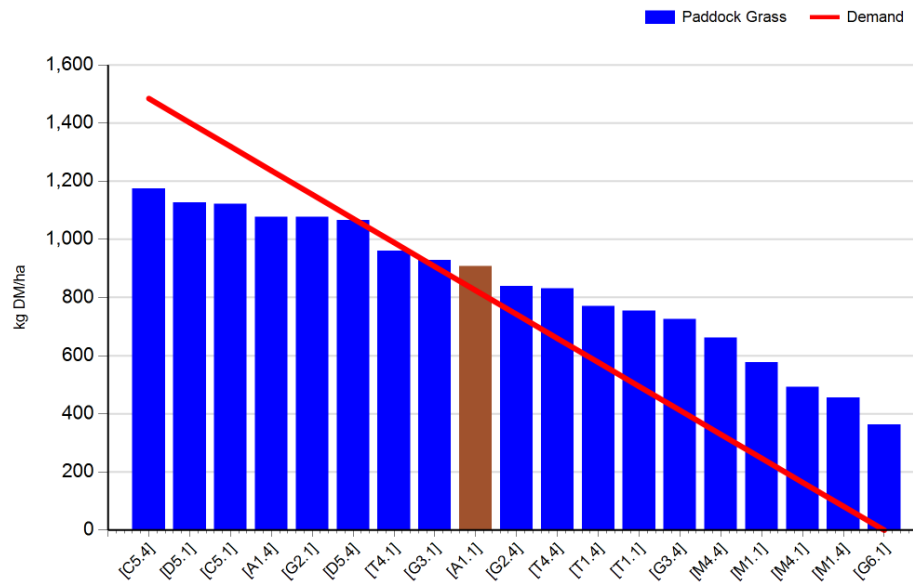
	Feed to Yield	Feed to Budget
<b><i>This Week (15/9/13)</i></b>		
Milk Kg	15.1	14.6
Fat %	4.15	4.42
Protein %	3.90	4.02
Milk Solids kg	1.21	1.21
Parlour Concentrate kg	3.0	+3.0
Other supplement kg DM	-	-
<b><i>Lactation yield (autumn herd)</i></b>		
Milk kg	7599	7346
Milk Solids kg	572	544
Concentrate fed Parlour (Total)	908 (1311)	950 (1360)

**85% 2012 autumn calving cows dried off by this week  
2 fresh calvers to date**

## Current Situation- Spring Calving

	Feed to Yield	Feed to Budget
<b><i>This Week (15/9/13)</i></b>		
Milk Kg	22.4	21.3
Fat %	3.72	3.96
Protein %	3.67	3.69
Milk Solids kg	1.62	1.66
Parlour Concentrate kg	3.2 avg	+3.0
Other supplement kg DM	-	-
<b><i>Cumulative (145 days in milk)</i></b>		
Milk kg	6198	5597
Milk Solids kg	448	406
Concentrate fed Parlour	775	437

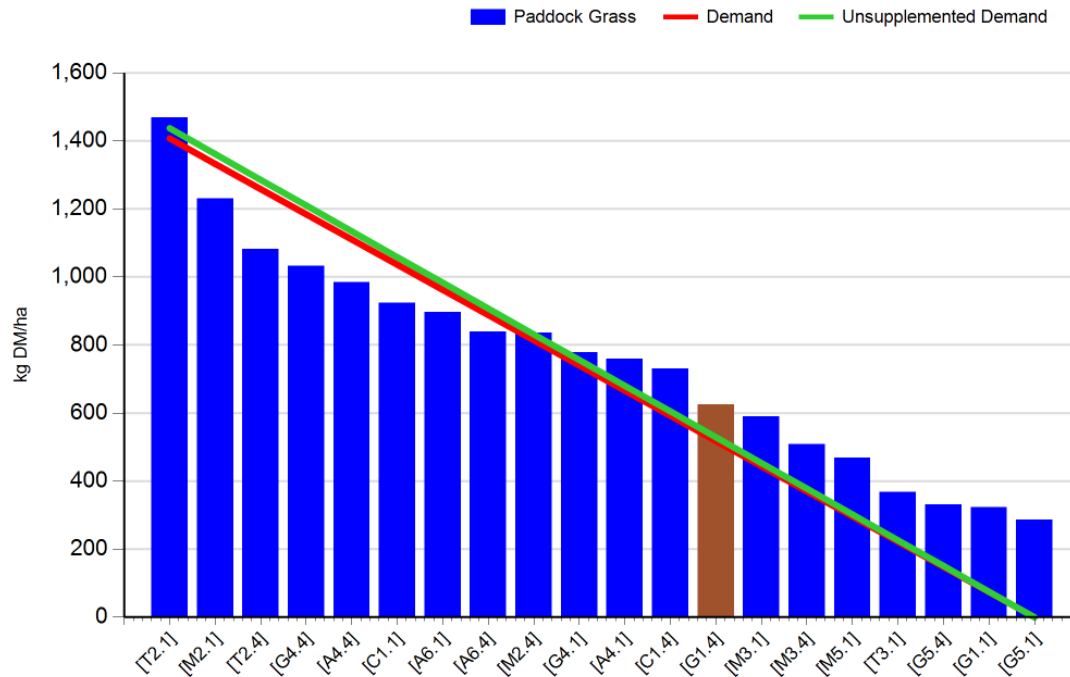
## Current Situation- Feed to Budget



- **Growth 23kg DM per day**
- Farm cover 840 kg DM ha
- Farm cover 284kg DM cow
- SR 2.95 cows ha
- Grass allocation 14g DM\*
- 3kg meal
- Residual ht 3.9cm

- Growth has slowed significantly...
- Need to hold farm cover so dry off remaining stale cows
- Dry cows removed from block
- Meal increased to 3kg, 14kg grass allowance

# Current Situation- Feed to Yield



- **Growth Rate 27kg per day**
- Farm cover 755kg DM ha
- Farm cover 258kg DM cow
- SR 2.93 cows ha
- Base Milking Diet
  - 14 kg DM grass
  - 3 kg meal
  - 0.5kg meal per kg above 22 kg milk
- Residual 4.1cm

- Growth has slowed significantly..
- Dry off remaining stale cows and remove dry cows from block
- 3kg meal included as part of base diet, 14kg grass allowance

## Current Situation- Dry and fresh calving cows

- 2 autumn calved cows calved this week
  - Planned start date Sept 20<sup>th</sup>
- Dry cows grazing after milking herd until 3 weeks pre-calving
  - Max 24 hours per paddock to avoid grazing re-growth
  - Keep BCS to 3.25 or less – fewer calving problems and milk fevers
- 3 weeks before calving date move to calving paddock area
  - Offered 5kg DM of stemmy grass at 2400kgDM - no K fert since June
  - Access to 5kg DM round bale haylage (low K)
  - 1kg barley plus 20g Cal-Mag and 100g standard dry cow mins
  - Moved indoors during heavy rainfall
- Starting fresh cows on 2kg concentrate and rising to 4kg by day 8